



## CHAPTER 4

# Environmental Scan



### ***ABOUT THE ENVIRONMENTAL SCAN***

The Environmental Scan provides a thorough overview of the external and internal factors shaping the future of Santa Monica College. A common feature of education master plans, an environmental scan functions as both a diagnostic tool and a strategic compass: The scan identifies trends, challenges, and opportunities that should inform institutional priorities and long-term planning. By coordinating demographic, economic, educational, and labor market data, the scan ensures SMC's planning is rooted in evidence and responsive to the evolving needs of its students and community.

The many charts and tables presented in this chapter illuminate the conditions under which Santa Monica College operates. The external scan examines population dynamics, K-12 enrollment pipelines, regional labor market projections, and transfer trends, highlighting both the opportunities for growth and the constraints SMC must navigate. Looking inward, the internal scan captures enrollment patterns, student outcomes, and program demand, enabling the college to better understand its own strengths and areas requiring attention.

### Internal Scan

ENROLLMENT BASELINE DATA - REPORTED FTES								
	2017-2018	2018-2019	2019-2020 (PANDEMIC)	2020-2021	2021-2022	2022-2023	2023-2024	7-YEAR CHANGE
<b>RESIDENT CREDIT FTES</b>								
Unduplicated Headcount	41,979	40,700	39,702	37,212	34,044	32,876	33,652	-9,289 (-21.6%)
Actual	19,937	19,501	19,604	19,101	17,014	16,075	16,642	-3,294.27 (-16.5%)
Borrowed FTES (included in TOTAL)	-2,065.19	0	0	0	0	0	0	
Reported Resident Credit FTES	17,871	19,501	19,604	19,101	17,013	16,075	16,642	-5615.56 (-25.2%)
<b>RESIDENT NONCREDIT FTES</b>								
Unduplicated Headcount	4,637	4,678	4,678	3,601	3,656	4,562	4,929	+311 (+6.7%)
CDCP Noncredit FTES	158	150	121	137	134	227	245	+77.76 (+46.4%)
Emeritus Noncredit FTES	530	530	483	617	563	528	567	+42.43 (+8.1%)
Other Noncredit FTES	99.53	68.08	55.16	65.28	40.38	117.87	50	-10.39 (-17.2%)
Total Resident Noncredit FTES	787.38	747.97	659.22	818.71	737.49	872.03	862	+109.8 (+14.6%)
<b>NONRESIDENT FTES</b>								
Unduplicated Headcount	8,214	7,921	7,257	5,940	5,673	6,186	6,358	-1907 (-23.1%)
Nonresident Credit FTES	4,589	4,259	3,921	3,067	2,762	2,842	3,152	-1,645.8 (-34.3%)
Nonresident Noncredit FTES	0	0	0	1	2	2	3	+2.96
Total Nonresident FTES	4,589	4,259	3,921	3,088	2,764	2,844	3,155	-1,642.84 (-34.2%)

Source: California Community College Chancellor's Office (CCCCO) DataMart

**Table 1: Enrollment Data – Reported FTES**

Santa Monica College has experienced a significant decline in enrollment over the past seven years, with the most substantial decreases in Resident Credit FTES (-25.2%) and Nonresident Credit FTES (-34.3%). The unduplicated headcount for Resident Credit students has dropped by 21.6%, reflecting a broader enrollment challenge. However, Resident Noncredit FTES has seen a 14.6% increase, with notable growth in CDCP Noncredit FTES (+46.4%) and Emeritus Noncredit FTES (+8.1%), indicating strong demand for noncredit education. Nonresident enrollment has also declined sharply, with total Nonresident FTES falling by 34.2%, likely due to factors such as the pandemic and changing international student trends.

INSTRUCTIONAL CAPACITY AND ENROLLMENT							
	2018-2019	2019-2020	2020-2021	2021-2022	2022-2023	2023-2024	6-YEAR CHANGE
<b>CREDIT</b>							
# Sections	7,050	7,121	6,360	6,245	6,297	6,143	-907 (-13%)
WTH	22,688	22,638	20,974	20,674	20,357	19,559	-3,129 (-14%)
WSCH	41,183	41,144	39,089	39,251	38,524	36,079	-5,104 (-12%)
<b>CDCP</b>							
# Sections	100	99	117	108	132	172	72 (72%)
WTH	215	232	333	245	312	410	195 (91%)
WSCH	386	440	635	473	674	887	501 (130%)
<b>NONCREDIT (Non-CDCP)</b>							
# Sections	439	477	458	486	531	531	92 (21%)
WTH	828	914	759	827	834	841	13 (2%)
WSCH	1,225	1,319	1,089	1,318	1,348	1,335	110 (9%)
<b>TOTAL</b>							
# Sections	7,598	7,707	6,935	6,839	6,960	6,846	-752 (-10%)
WTH	23,732	23,785	22,066	21,746	21,504	20,810	-2,922 (12%)
WSCH	42,795	42,903	40,813	41,041	40,547	38,301	-4,494 (-11%)
FT FTEF	337	342.05	353.37	323.73	347.50	351.08	14 (4%)
PT FTEF	389.4	375.96	322.54	331.26	297.50	295.73	-94 (-24%)
Total FTEF	726.4	718.01	675.91	654.99	645.00	646.81	-80 (-11%)
Resident FTES	20,249.28	20,263.45	19,920.18	17,751.16	16,945.20	17,525.25	-2,724 (-13%)
FTES/FTEF	27.88	28.22	29.23	27.1	26.27	27.09	-1 (-3%)

Source: California Community College Chancellor's Office (CCCCO) DataMart

**Table 2: Instructional Capacity and Enrollment**

Over the past seven years, Santa Monica College has experienced a significant decline in credit enrollment, with credit sections decreasing by 14%, weekly teaching hours (WTH) down by 12%, and weekly student contact hours (WSCH) dropping by 8%. This trend highlights a contraction in traditional credit offerings. Conversely, noncredit and CDCP (Career Development and College Preparation) sections have expanded, with CDCP sections increasing by 83%, WSCH nearly doubling (+96%), and noncredit sections growing by 15%. Despite these gains in noncredit areas, overall instructional capacity (FTEF) has shrunk by 13%, with part-time faculty experiencing a steeper decline (-16%) than full-time faculty (-8%). Additionally, resident FTES has dropped by 19%, signaling potential revenue and enrollment concerns. These trends suggest that while noncredit programming is growing, the decline in credit enrollment and overall FTES presents a strategic challenge for the institution.

STUDENT DEMOGRAPHICS									
(Note: For students self-reporting more than one value in the same demographic category with the year, the value reported earliest in the academic year is included in the analyses.)									
UNDUPLICATED HEADCOUNT									
	2017-2018	2018-2019	2019-2020	2020-2021	2021-2022	2022-2023	2023-2024	6-YEAR CHANGE	3-YEAR CHANGE
Headcount	46,616	45,378	44,380	41,113	37,700	37,309	38,581	-17%	2%
GENDER									
Female	26,096	25,517	24,993	23,908	21,852	21,233	21,814	-16%	0%
Male	20,263	19,293	18,673	16,416	14,984	14,958	15,540	-23%	4%
Other	257	568	714	789	864	1,122	1,235	381%	43%
RACE/ETHNICITY									
Asian	4,663	4,467	4,204	3,862	3,805	3,826	3,817	-18%	0%
Black	3,966	3,749	3,516	3,144	2,961	3,103	3,243	-18%	10%
Latinx	16,463	15,978	15,800	15,028	13,777	13,309	13,483	-18%	-2%
Native American	84	85	84	61	60	56	57	-32%	-5%
Pacific Islander	97	86	88	73	69	54	53	-45%	-23%
Two or More	1,982	2,053	1,883	1,951	1,894	1,870	1,920	-3%	1%
Unreported	915	1205	2,396	1,448	1,048	1,349	1,355	48%	29%
White	14,460	14,074	12,986	13,088	11,793	11,798	12,496	-14%	6%
F1	3,986	3,681	3,423	2,458	2,293	2,058	2,262	-43%	-1%
AGE GROUP									
<=19	12,432	12,418	12,744	12,255	10,703	10,607	10,825	-13%	1%
20 to 24	16,060	15,026	14,007	12,395	11,544	12,453	12,504	-22%	8%
25 to 29	6,522	6,192	5,984	5,583	4,941	4,953	4,918	-25%	0%
30 to 39	4,420	4,603	4,559	4,758	4,579	4,723	5,052	14%	10%
40 to 49	1,907	1,795	1,779	1,715	1,767	1,908	2,107	10%	19%
50+	5,275	5,344	5,307	4,407	4,166	4,654	5,031	-5%	21%

Source: California Community College Chancellor's Office (CCCCO) DataMart

**Table 3: Student Demographics – Gender, Race/Ethnicity, Age**

The data reveal a 17% decline in overall enrollment since 2017-2018, with particularly sharp decreases among male students, students aged 20-29, and international (F1) students. However, some groups — such as students identifying as "Other" in gender, those aged 40 and older, and students reporting multiple or unreported racial/ethnic identities — have seen growth over the same period. The table also highlights recent enrollment stabilization, with a modest 2% increase over the last three years

STUDENT DEMOGRAPHICS									
(Note: For students self-reporting more than one value in the same demographic category with the year, the value reported earliest in the academic year is included in the analyses.)									
UNDUPLICATED HEADCOUNT									
	2017-2018	2018-2019	2019-2020	2020-2021	2021-2022	2022-2023	2023-2024	6-YEAR CHANGE	3-YEAR CHANGE
<b>Headcount</b>	46,616	45,378	44,380	41,113	37,700	37,309	38,581	-17%	2%
<b>RESIDENCE</b>									
California	38,402	37,457	37,123	35,173	32,027	31,255	32,223	-16%	1%
Foreign Country	3,986	3,681	3,423	2,458	2,293	2,352	2,483	-38%	8%
Out-of-State	4,228	4,240	3,834	3,482	3,380	3,834	3,875	-8%	15%
<b>EDUCATION STATUS</b>									
AAAS	1,683	1,677	1,642	1,433	1,392	1,543	1,626	-3%	17%
Adult School	206	191	143	144	189	181	134	-35%	-29%
BABS+	8,268	8,196	8,135	7,451	6,974	7,189	7,762	-6%	11%
HS	34,045	32,745	31,695	29,298	26,658	26,147	26,745	-21%	0%
Not HS Grad	543	539	555	444	424	446	560	3%	32%
Special Admit	1,593	1,766	1,943	2,166	1,929	1,771	1,805	13%	-6%
Unreported	278	264	267	177	134	117	86	-69%	-36%
<b>EDUCATION GOAL</b>									
AAAS	1,241	1,448	1,610	1,627	1,688	1,851	2,284	84%	35%
Career	3,515	3,454	3,433	3,211	2,948	2,846	2,923	-17%	-1%
Cert	759	823	860	862	824	872	910	20%	10%
Ed Dev	2,808	2,339	2,039	1,816	1,723	1,852	2,525	-10%	47%
Other	959	1,122	1,265	1,237	1,173	1,080	1,098	14%	-6%
Transfer	27,360	26,393	25,476	23,930	21,554	21,083	21,378	-22%	-1%
Undecided	2,507	2,511	2,591	2,473	2,286	2,215	1,958	-22%	-14%
Univ or 4-Yr Stu	2,590	2,309	2,123	1,860	1,570	1,647	1,828	-29%	16%
Unreported	4,877	4,979	4,983	4,097	3,934	4,524	4,237	-13%	8%

Source: California Community College Chancellor's Office (CCCCO) DataMart

**Table 4: Student Demographics by Residence and Education Goal**

While overall headcount declined by 17% since 2017-2018, notable increases were observed among students from out-of-state and those with a goal of earning an Associate degree (AA/AS). Students from California remain the vast majority of the student body, though international enrollment has dropped sharply. Transfer intent continues to be the most common education goal, despite a 22% decline since 2017-2018, reflecting broader enrollment shifts across California's higher education landscape.

STUDENT DEMOGRAPHICS									
(Note: For students self-reporting more than one value in the same demographic category with the year, the value reported earliest in the academic year is included in the analyses.)									
UNDUPLICATED HEADCOUNT									
	2017-2018	2018-2019	2019-2020	2020-2021	2021-2022	2022-2023	2023-2024	6-YEAR CHANGE	3-YEAR CHANGE
Headcount	46,616	45,378	44,380	41,113	37,700	37,309	38,581	-17%	2%
ENROLLMENT STATUS									
Continuing	20,805	19,959	19,135	17,969	16,869	22,053	23,017	11%	36%
First Time in College	7,190	7,285	7,410	6,423	5,855	6,471	6,692	-7%	14%
First Time Transfer	9,266	8,688	8,400	7,157	6,375	7,456	7,961	-14%	25%
Returning	7,761	7,673	7,488	7,383	6,628	7,007	6,947	-10%	5%
Special Admit	1,593	1,766	1,943	2,166	1,929	1,771	1,805	13%	-6%
Unreported	1	7	4	15	44	55	57	5600%	30%
CREDIT STATUS									
Credit	41,979	40,700	39,702	37,212	34,044	32,876	33,652	-20%	-1%
Noncredit	4,637	4,678	4,678	3,901	3,656	4,562	4,929	6%	35%

Source: California Community College Chancellor's Office (CCCCO) DataMart

**Table 5: Student Headcount by Enrollment and Credit Status**

While total enrollment declined by 17% since 2017-2018, recent years show signs of recovery, with a 2% increase over the last three years. Continuing students now represent the largest and fastest-growing group, with a 36% increase over the past three years. Meanwhile, noncredit enrollment has risen significantly — by 35% over three years — highlighting the expanding role of noncredit programs in serving adult learners and workforce development goals.

FALL TO SPRING PERSISTENCE							
GENDER							
*Tables exclude “unreported” or “unknown” gender categories							
	FALL 2017	FALL 2018	FALL 2019	FALL 2020	FALL 2021	FALL 2022	FALL 2023
<b>Fall Headcount</b>	30,526	29,778	28,549	26,827	24,455	23,196	24,170
<b>Persisted to Spring</b>	20,873	20,309	19,693	18,423	16,156	15,628	16,371
<i>Percentage (%)</i>	68.4%	68.2%	69.0%	68.7%	66.1%	67.4%	67.7%
<b>Female</b>	16,367	15,999	15,433	15,109	13,723	12,762	13,073
Persisted to Spring	11,058	10,901	10,567	10,374	8,973	8,501	8,785
<i>Percentage (%)</i>	67.6%	68.1%	68.5%	68.7%	65.4%	66.6%	67.2%
<b>Male</b>	14,050	13,451	12,676	11,234	10,202	9,763	10,310
Persisted to Spring	9,764	9,222	8,869	7,752	6,852	6,689	7,091
<i>Percentage (%)</i>	69.5%	68.6%	70.0%	69.0%	67.2%	68.5%	68.8%

Source: California Community College Chancellor's Office (CCCCO) DataMart

**Table 6: Student Persistence by Gender**

Male and female students have shown relatively consistent persistence trends over the seven-year period, with male students slightly outperforming female students in most years. While both groups experienced a dip in persistence during the pandemic years, recent data suggest a modest rebound and stabilization in student continuity for both genders.

FALL-TO-SPRING PERSISTENCE							
RACE/ETHNICITY							
*Tables exclude "Native American/Alaskan Native" & "Pacific Islander" groups due to small numbers							
	FALL 2017	FALL 2018	FALL 2019	FALL 2020	FALL 2021	FALL 2022	FALL 2023
<b>Fall Headcount</b>	30,526	29,778	28,549	26,827	24,455	23,196	24,170
<b>Persisted to Spring</b>	20,873	20,309	19,693	18,423	16,156	15,628	16,371
<i>Percentage (%)</i>	68.4%	68.2%	69.0%	68.7%	66.1%	67.4%	67.7%
<b>Asian</b>	4,463	3,797	3,002	2,502	2,365	2,206	2,224
Persisted to Spring	3,300	2,710	2,115	1,691	1,527	1,408	1,478
<i>Percentage (%)</i>	73.9%	71.4%	70.5%	67.6%	64.6%	63.8%	66.5%
<b>Black</b>	2,683	2,559	2,344	2,119	2,011	2,006	2,118
Persisted to Spring	1,637	1,546	1,462	1,380	1,251	1,285	1,373
<i>Percentage (%)</i>	61.0%	60.4%	62.4%	65.1%	62.2%	64.1%	64.8%
<b>Latinx</b>	12,206	11,856	11,554	11,055	10,070	9,532	9,682
Persisted to Spring	8,469	8,208	8,077	7,617	6,638	6,427	6,538
<i>Percentage (%)</i>	69.4%	69.2%	69.9%	68.9%	65.9%	67.4%	67.5%
<b>Two or More</b>	1,328	1,412	1,252	1,310	1,279	1,211	1,281
Persisted to Spring	882	919	875	896	852	804	866
<i>Percentage (%)</i>	66.4%	65.1%	69.9%	68.4%	66.6%	66.4%	67.6%
<b>Unreported</b>	1,471	2,048	3,409	2,683	2,162	2,181	2,367
Persisted to Spring	1,075	1,535	2,436	2,031	1,585	1,615	1,806
<i>Percentage (%)</i>	73.1%	75.0%	71.5%	75.7%	73.3%	74.0%	76.3%
<b>White</b>	8,241	8,003	6,881	7,069	6,487	6,002	6,442
Persisted to Spring	5,419	5,328	4,659	4,752	4,257	4,052	4,279
<i>Percentage (%)</i>	65.8%	66.6%	67.7%	67.2%	65.6%	67.5%	66.4%

Source: California Community College Chancellor's Office (CCCCO) DataMart

**Table 7: Student Persistence by Racial/Ethnic Group**

Across the seven-year period, overall persistence remained relatively stable, ranging between 66% and 69%. Latine/x and White students closely mirror the college-wide average, while Asian students consistently post higher persistence rates, despite a slight decline in recent years. Black students show persistent equity gaps, with lower rates compared to most other groups. Notably, students with unreported race/ethnicity data display the highest persistence rates throughout the timeframe.

FALL-TO-SPRING PERSISTENCE							
AGE GROUP							
*Tables exclude "unreported" or "unknown" gender categories							
	FALL 2017	FALL 2018	FALL 2019	FALL 2020	FALL 2021	FALL 2022	FALL 2023
<b>Fall Headcount</b>	30,526	29,778	28,549	26,827	24,455	23,196	24,170
<b>Persisted to Spring</b>	20,873	20,309	19,693	18,423	16,156	15,628	16,371
<i>Percentage (%)</i>	68.4%	68.2%	69.0%	68.7%	66.1%	67.4%	67.7%
<b>&lt;=19</b>	9,018	9,049	9,327	8,936	7,586	7,527	7,720
Persisted to Spring	7,066	7,094	7,396	6,750	5,709	5,818	6,101
<i>Percentage (%)</i>	78.4%	78.4%	79.3%	75.5%	75.3%	77.3%	79.0%
<b>20 to 24</b>	11,862	11,187	10,098	9,122	8,340	7,692	7,926
Persisted to Spring	8,314	7,693	7,064	6,335	5,528	5,259	5,508
<i>Percentage (%)</i>	70.1%	68.8%	70.0%	69.4%	66.3%	68.4%	69.5%
<b>25 to 29</b>	4,339	4,207	3,964	3,722	3,324	2,944	2,982
Persisted to Spring	2,491	2,499	2,338	2,250	1,948	1,703	1,720
<i>Percentage (%)</i>	57.4%	59.4%	59.0%	60.5%	58.6%	57.8%	57.7%
<b>30 to 39</b>	2,837	2,947	2,855	3,101	3,058	2,844	3,030
Persisted to Spring	1,590	1,637	1,593	1,878	1,733	1,619	1,636
<i>Percentage (%)</i>	56.0%	55.5%	55.8%	60.6%	56.7%	56.9%	54.0%
<b>40 to 49</b>	1,225	1,164	1,152	1,043	1,185	1,134	1,286
Persisted to Spring	676	672	656	657	669	655	711
<i>Percentage (%)</i>	55.2%	57.7%	56.9%	63.0%	56.5%	57.8%	55.3%
<b>50+</b>	1,245	1,224	1,153	903	962	1,055	1,226
Persisted to Spring	736	714	646	553	569	574	695
<i>Percentage (%)</i>	59.1%	58.3%	56.0%	61.2%	59.1%	54.4%	56.7%

Source: California Community College Chancellor's Office (CCCCO) DataMart

**Table 8: Student Persistence by Age Group**

Students aged 19 and under consistently demonstrate the highest persistence rates — approaching or exceeding 78% — well above the college-wide average. In contrast, persistence steadily declines with age, with students aged 25 and older persistently exhibiting lower rates, typically in the mid-50% to low-60% range. These trends highlight a persistent age-related equity gap in semester-to-semester continuity.

FALL-TO-SPRING PERSISTENCE							
UNIT LOAD STATUS							
	FALL 2017	FALL 2018	FALL 2019	FALL 2020	FALL 2021	FALL 2022	FALL 2023
<b>Fall Headcount</b>	30,526	29,778	28,549	26,827	24,455	23,196	24,170
<b>Persisted to Spring</b>	20,873	20,309	19,693	18,423	16,156	15,628	16,371
<i>Percentage (%)</i>	68.4%	68.2%	69.0%	68.7%	66.1%	67.4%	67.7%
<b>Noncredit</b>	658	638	617	339	518	799	992
Persisted to Spring	342	321	288	186	245	398	426
<i>Percentage (%)</i>	52.0%	50.3%	46.7%	54.9%	47.3%	49.8%	42.9%
<b>0.5 to 5.5 units</b>	7,445	7,394	6,903	6,897	6,454	5,869	5,936
Persisted to Spring	3,192	3,221	3,123	3,225	2,926	2,712	2,652
<i>Percentage (%)</i>	42.9%	43.6%	45.2%	46.8%	45.3%	46.2%	44.7%
<b>6 to 8.5 units</b>	5,894	5,791	5,400	5,031	4,803	4,277	4,468
Persisted to Spring	3,786	3,644	3,425	3,164	2,880	2,579	2,803
<i>Percentage (%)</i>	64.2%	62.9%	63.4%	62.9%	60.0%	60.3%	62.7%
<b>9 to 11.5 units</b>	5,383	4,787	4,502	4,331	3,716	3,374	3,287
Persisted to Spring	4,026	3,601	3,308	3,152	2,632	2,451	2,377
<i>Percentage (%)</i>	74.8%	75.2%	73.5%	72.8%	70.8%	72.6%	72.3%
<b>12+ units</b>	11,146	11,168	11,127	10,169	8,964	8,877	9,487
Persisted to Spring	9,527	9,522	9,549	8,696	7,473	7,488	8,113
<i>Percentage (%)</i>	85.5%	85.3%	85.8%	85.5%	83.4%	84.4%	85.5%

Source: California Community College Chancellor's Office (CCCCO) DataMart

**Table 9: Student Persistence by Unit Load**

Full-time students (enrolled in 12 or more units) consistently exhibit the highest persistence rates, with more than 85% continuing each spring. Persistence rates decline steadily with lighter unit loads, with students enrolled in fewer than 6 units persisting at less than half that rate. Noncredit students show the lowest persistence, with significant variability across years. These data underscore the strong correlation between unit load and continued enrollment.

FALL-TO-FALL RETENTION						
GENDER						
*Tables exclude "unreported" or "unknown" gender categories						
	FALL 2017	FALL 2018	FALL 2019	FALL 2020	FALL 2021	FALL 2022
<b>Fall Headcount</b>	30,526	29,778	28,549	26,827	24,455	23,196
<b>Retained to Next Fall</b>	14,563	13,964	12,971	12,176	10,678	10,502
<i>Percentage (%)</i>	47.7%	46.9%	45.4%	45.4%	43.7%	45.3%
<b>Female</b>	16,367	15,999	15,433	15,109	13,723	12,762
Retained to Next Fall	7,790	7,587	7,179	6,843	5,928	5,703
<i>Percentage (%)</i>	47.6%	47.4%	46.5%	45.3%	43.2%	44.7%
<b>Male</b>	14,050	13,451	12,676	11,234	10,202	9,763
Retained to Next Fall	6,738	6,251	5,624	5,133	4,525	4,506
<i>Percentage (%)</i>	48.0%	46.5%	44.4%	45.7%	44.4%	46.2%

Source: SMC Institutional Research

**Table 10: Student Retention by Gender**

This table displays one-year persistence rates for students at Santa Monica College disaggregated by gender, excluding those with unreported or unknown gender identities. Retention rates for female and male students have remained relatively consistent over time, with male students slightly outpacing female students in most years despite lower overall headcounts. These patterns suggest relatively minor gender-based differences in student persistence over the six-year period.

FALL-TO-FALL RETENTION						
RACE/ETHNICITY						
*Tables exclude "Native American/Alaskan Native" & "Pacific Islander" groups due to small numbers						
	FALL 2017	FALL 2018	FALL 2019	FALL 2020	FALL 2021	FALL 2022
<b>Fall Headcount</b>	30,526	29,778	28,549	26,827	24,455	23,196
<b>Retained to Next Fall</b>	14,563	13,964	12,971	12,176	10,678	10,502
<i>Percentage (%)</i>	47.7%	46.9%	45.4%	45.4%	43.7%	45.3%
<b>Asian</b>	4,463	3,797	3,002	2,502	2,365	2,206
Retained to Next Fall	2,112	1,686	1,266	1,067	994	930
<i>Percentage (%)</i>	47.3%	44.4%	42.2%	42.6%	42.0%	42.2%
<b>Black</b>	2,683	2,559	2,344	2,119	2,011	2,006
Retained to Next Fall	1,176	1,122	960	946	864	850
<i>Percentage (%)</i>	43.8%	43.8%	41.0%	44.6%	43.0%	42.4%
<b>Latinx</b>	12,206	11,856	11,554	11,055	10,070	9,532
Retained to Next Fall	6,315	6,036	5,525	5,391	4,719	4,553
<i>Percentage (%)</i>	51.7%	50.9%	47.8%	48.8%	46.9%	47.8%
<b>Two or More</b>	1,328	1,412	1,252	1,310	1,279	1,211
Retained to Next Fall	613	621	588	584	561	558
<i>Percentage (%)</i>	46.2%	44.0%	47.0%	44.6%	43.9%	46.1%
<b>Unreported</b>	1,471	2,048	3,409	2,683	2,162	2,181
Retained to Next Fall	702	974	1,559	1,166	903	1,004
<i>Percentage (%)</i>	47.7%	47.6%	45.7%	43.5%	41.8%	46.0%
<b>White</b>	8,241	8,003	6,881	7,069	6,487	6,002
Retained to Next Fall	3,585	3,481	3,031	2,981	2,608	2,587
<i>Percentage (%)</i>	43.5%	43.5%	44.0%	42.2%	40.2%	43.1%

Source: SMC Institutional Research

**Table 11: Student Retention by Racial/Ethnic Group**

This table presents one-year retention rates for Santa Monica College students disaggregated by race and ethnicity, excluding groups with small sample sizes. Across the six-year span, Latine/x students consistently exhibit the highest retention rates among reported groups, while retention among Black and White students remains lower and relatively stable. Fluctuations in the "Unreported" category highlight the need for more complete demographic data to fully assess equity in student persistence outcomes.

FALL-TO-FALL RETENTION						
AGE GROUP						
	FALL 2017	FALL 2018	FALL 2019	FALL 2020	FALL 2021	FALL 2022
<b>Fall Headcount</b>	30,526	29,778	28,549	26,827	24,455	23,196
<b>Retained to Next Fall</b>	14,563	13,964	12,971	12,176	10,678	10,502
<i>Percentage (%)</i>	47.7%	46.9%	45.4%	45.4%	43.7%	45.3%
<b>&lt;=19</b>	9,018	9,049	9,327	8,936	7,586	7,527
Retained to Next Fall	5,326	5,306	5,282	4,703	4,003	4,184
<i>Percentage (%)</i>	59.1%	58.6%	56.6%	52.6%	52.8%	55.6%
<b>20 to 24</b>	11,862	11,187	10,098	9,122	8,340	7,692
Retained to Next Fall	5,403	4,856	4,259	3,986	3,422	3,260
<i>Percentage (%)</i>	45.5%	43.4%	42.2%	43.7%	41.0%	42.4%
<b>25 to 29</b>	4,339	4,207	3,964	3,722	3,324	2,944
Retained to Next Fall	1,657	1,619	1,503	1,397	1,193	1,058
<i>Percentage (%)</i>	38.2%	38.5%	37.9%	37.5%	35.9%	35.9%
<b>30 to 39</b>	2,837	2,947	2,855	3,101	3,058	2,844
Retained to Next Fall	1,118	1,114	1,100	1,220	1,152	1,065
<i>Percentage (%)</i>	39.4%	37.8%	38.5%	39.3%	37.7%	37.4%
<b>40 to 49</b>	1,225	1,164	1,152	1,043	1,185	1,134
Retained to Next Fall	492	511	429	466	465	497
<i>Percentage (%)</i>	40.2%	43.9%	37.2%	44.7%	39.2%	43.8%
<b>50+</b>	1,245	1,224	1,153	903	962	1,055
Retained to Next Fall	567	558	398	404	443	438
<i>Percentage (%)</i>	45.5%	45.6%	34.5%	44.7%	46.0%	41.5%

Source: SMC Institutional Research

**Table 12: Student Retention by Age Group**

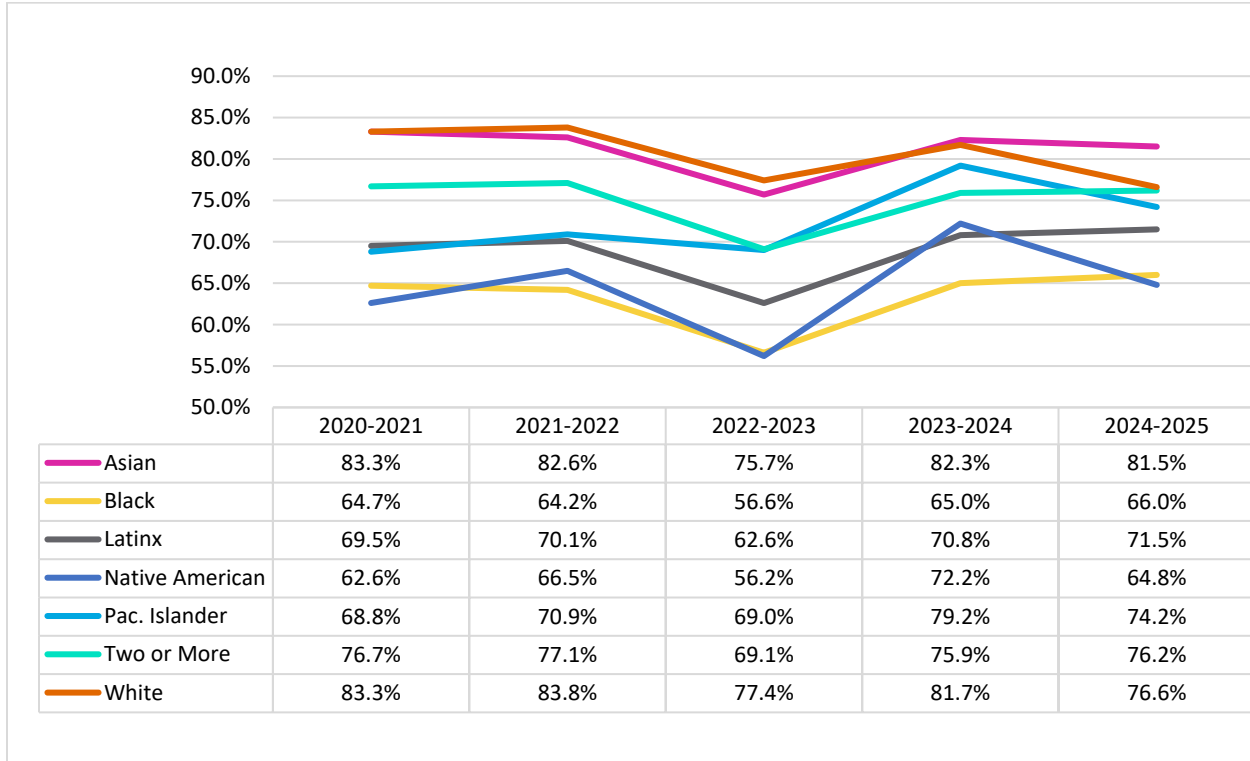
This table presents year-over-year persistence rates for students at Santa Monica College, segmented by age group. Students aged 19 and under consistently exhibit the highest retention rates, while students in the 25-39 age range show notably lower persistence. Despite declining overall enrollment across all age groups, retention trends remain stable within each cohort, underscoring age as a significant factor in student persistence.

FALL-TO-FALL RETENTION						
CREDIT STATUS						
	FALL 2017	FALL 2018	FALL 2019	FALL 2020	FALL 2021	FALL 2022
<b>Fall Headcount</b>	30,526	29,778	28,549	26,827	24,455	23,196
<b>Retained to Next Fall</b>	14,563	13,964	12,971	12,176	10,678	10,502
<i>Percentage (%)</i>	47.7%	46.9%	45.4%	45.4%	43.7%	45.3%
<b>Noncredit</b>	658	638	617	339	518	799
Retained to Next Fall	247	241	130	118	162	241
<i>Percentage (%)</i>	37.5%	37.8%	21.1%	34.8%	31.3%	30.2%
<b>0.5 to 5.5 units</b>	7,445	7,394	6,903	6,897	6,454	5,869
Retained to Next Fall	2,236	2,318	2,102	2,145	1,990	1,887
<i>Percentage (%)</i>	30.0%	31.3%	30.5%	31.1%	30.8%	32.2%
<b>6 to 8.5 units</b>	5,894	5,791	5,400	5,031	4,803	4,277
Retained to Next Fall	2,789	2,634	2,324	2,250	2,006	1,879
<i>Percentage (%)</i>	47.3%	45.5%	43.0%	44.7%	41.8%	43.9%
<b>9 to 11.5 units</b>	5,383	4,787	4,502	4,331	3,716	3,374
Retained to Next Fall	2,865	2,524	2,258	2,139	1,778	1,624
<i>Percentage (%)</i>	53.2%	52.7%	50.2%	49.4%	47.8%	48.1%
<b>12+ units</b>	11,146	11,168	11,127	10,169	8,964	8,877
Retained to Next Fall	6,426	6,247	6,157	5,524	4,742	4,871
<i>Percentage (%)</i>	57.7%	55.9%	55.3%	54.3%	52.9%	54.9%

Source: SMC Institutional Research

**Table 13: Student Retention by Credit Status**

This table displays the one-year retention rates for students at Santa Monica College disaggregated by credit status and unit load. Overall, students enrolled in 12 or more units consistently show the highest rates of persistence to the following fall term, while noncredit students and those enrolled in fewer than 6 units exhibit the lowest retention rates. Despite fluctuations in total headcount over the years, patterns in persistence by unit load have remained relatively consistent.

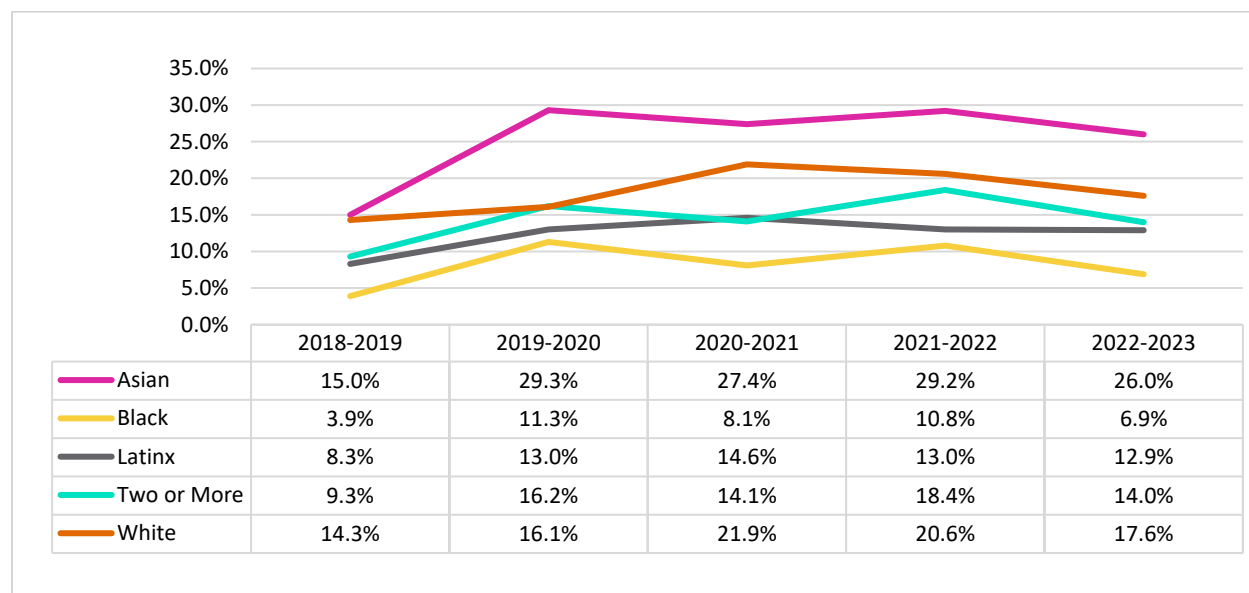
**COURSE SUCCESS RATE BY RACIAL/ETHNIC GROUP**

Source: California Community Colleges Data Vista

**Table 143: Course Success by Racial/Ethnic Group**

This chart shows course success rates by race and ethnicity from 2020-2021 to 2024-2025. Asian and White students consistently achieved the highest rates, both beginning at 83.3% in 2020-2021 and ending at 81.5% and 76.6%, respectively. Students identifying with two or more races and Pacific Islanders also performed relatively strongly, with rates in the mid- to high-70% range by 2024-2025. Latinx students improved from 69.5% in 2020-2021 to 71.5% in 2024-2025, while Native American students fluctuated between 55.2% and 72.2%. Black students experienced the lowest success rates across all years, ranging from 56.6% in 2022-2023 to 66.0% in 2024-2025, highlighting persistent equity gaps.

### COMPLETION RATE OF TRANSFER-LEVEL MATH AND ENGLISH IN FIRST YEAR BY ETHNIC/RACIAL GROUP

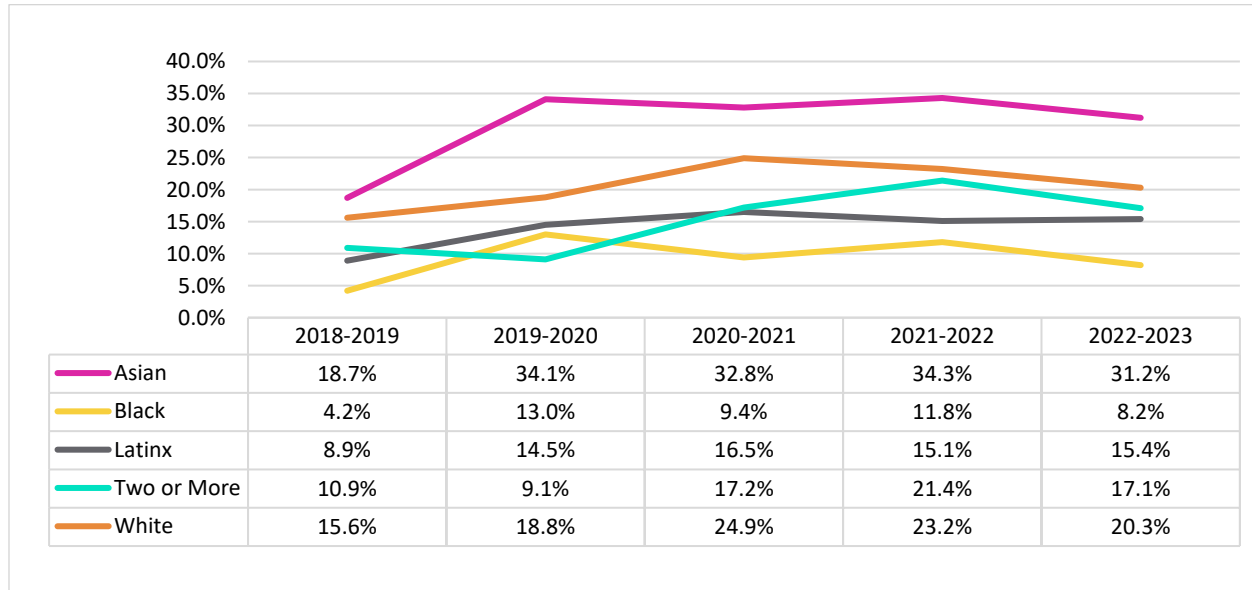


Source: California Community Colleges Data Vista

**Table 15: First-Year Student Completion of Math and English by Racial/Ethnic Group**

This graph shows the percentage of first-time students completing both transfer-level math and English within their first year, disaggregated by race and ethnicity from 2018-2019 to 2022-2023. Asian students consistently led all groups, rising from 15.0% in 2018-2019 to a peak of 29.3% in 2019-2020 and ending at 26.0% in 2022-2023. White students improved from 14.3% to 21.9% in 2020-2021 before declining slightly to 17.6% in 2022-2023. Students identifying with two or more races also grew, reaching 18.4% in 2021-2022 and holding at 14.0% in 2022-2023. Latinx students remained in the low teens, peaking at 14.6% in 2020-2021 and ending at 12.9%, while Black students showed the lowest completion rates throughout, ranging from 3.9% in 2018-2019 to 6.9% in 2022-2023.

### COMPLETION RATE OF TRANSFER-LEVEL MATH IN FIRST YEAR BY ETHNIC/RACIAL GROUP

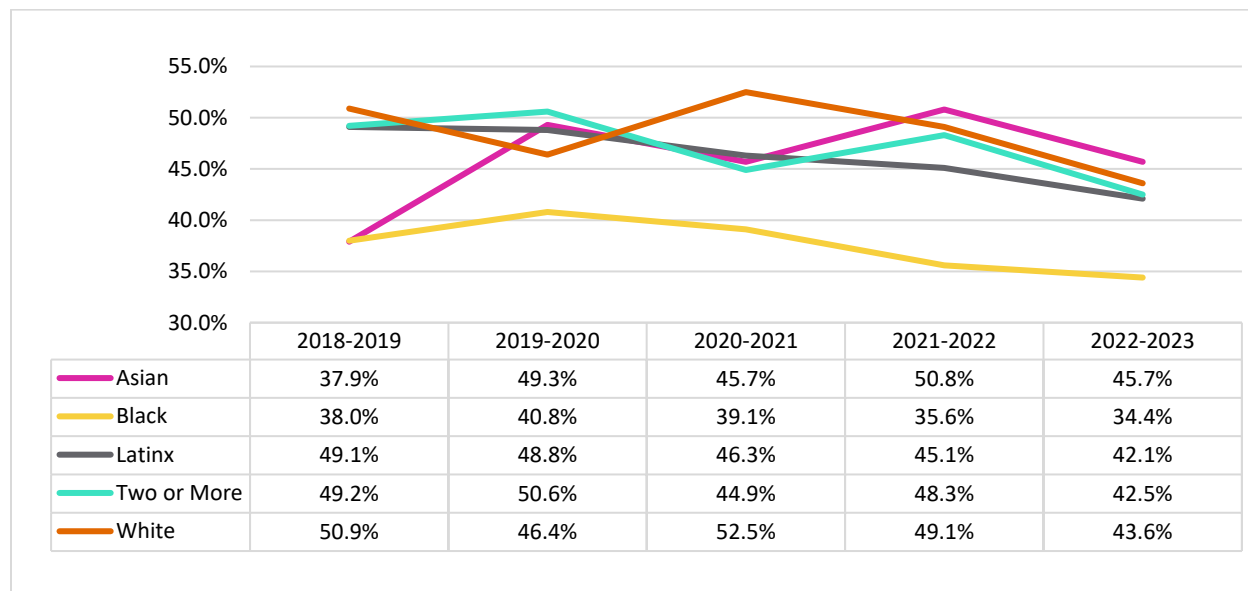


Source: California Community Colleges Data Vista

**Table 16a: First-Year Student Completion of Math by Racial/Ethnic Group**

This graph shows the percentage of first-time students completing transfer-level math within their first year, disaggregated by race and ethnicity from 2018-2019 to 2022-2023. Asian students had the highest completion rates, climbing from 18.7% in 2018-2019 to a peak of 34.3% in 2021-2022 before dipping slightly to 31.2%. White students also improved steadily, rising from 15.6% in 2018-2019 to 24.9% in 2020-2021 before ending at 20.3% in 2022-2023. Students identifying with two or more races showed consistent gains, reaching 21.4% in 2021-2022 before settling at 17.1%. Latinx students increased completion rates gradually from 8.9% to 15.4%, while Black students, though improving from 4.2% in 2018-2019 to 13.0% in 2019-2020, remained the lowest-performing group, ending at 8.2% in 2022-2023.

### COMPLETION RATE OF TRANSFER-LEVEL ENGLISH IN FIRST YEAR BY ETHNIC/RACIAL GROUP

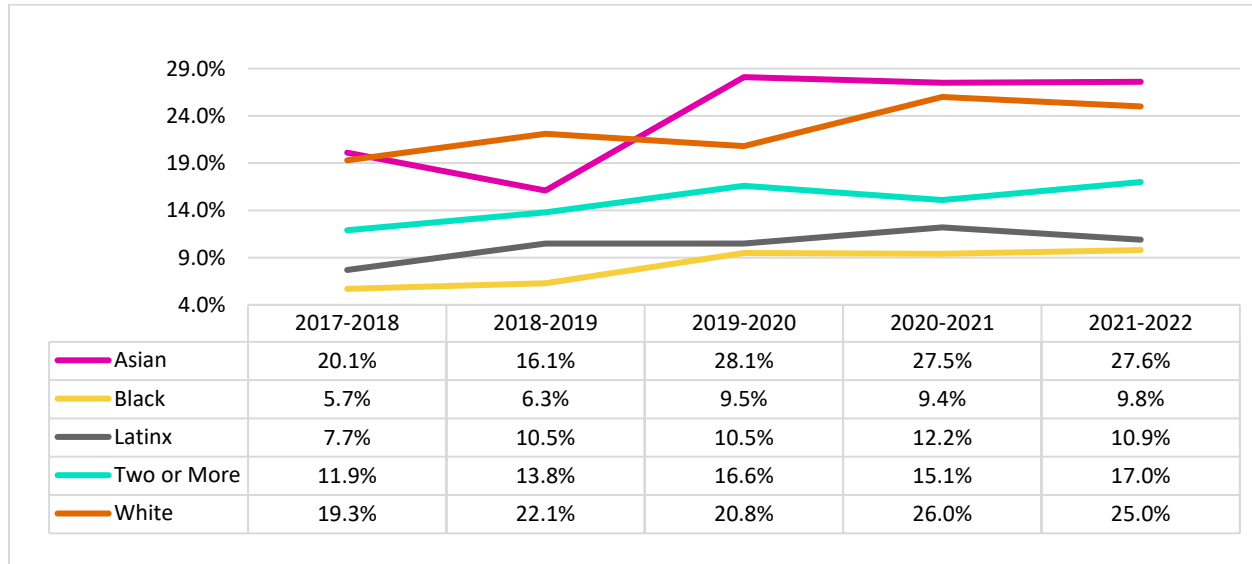


Source: California Community Colleges Data Vista

**Table 16b: First-Year Student Completion of English by Racial/Ethnic Group**

This graph shows the percentage of first-time students completing transfer-level English within their first year, disaggregated by racial and ethnic group. White students peaked at 52.5% in 2020-2021 before declining to 43.6% in 2022-2023, while Asian students rose from 37.9% in 2018-2019 to 50.8% in 2021-2022, ending at 45.7%. Latinx and students identifying with two or more races tracked closely, reaching about 49% in 2019-2020 before dropping to 42.1% and 42.5%, respectively, in 2022-2023. Black students remained consistently lower, ranging from 38.0% in 2018-2019 to 34.4% in 2022-2023, highlighting persistent equity gaps.

### COMPLETION RATE OF 30+ DEGREE APPLICABLE UNITS IN SELECTED YEAR BY ETHNIC/RACIAL GROUP

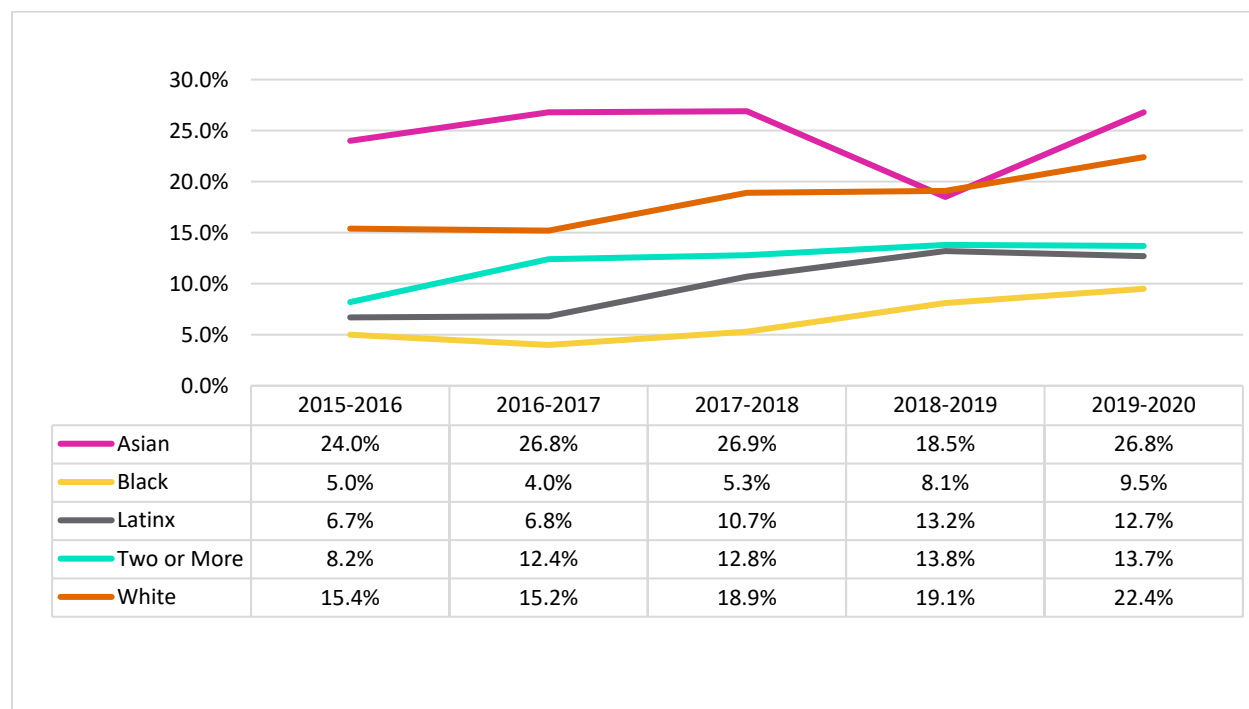


Source: California Community Colleges Data Vista

**Table 17: Completion Rate 30+ Degree Applicable Units in One Year by Racial/Ethnic Group**

This graph shows the percentage of students completing 30 or more degree-applicable units in a given year, disaggregated by race and ethnicity. Asian students rose from 20.1% in 2017-2018 to 28.1% in 2019-2020 and remained high at 27.6% in 2021-2022, while White students increased from 19.3% in 2017-2018 to 26.0% in 2020-2021 before leveling at 25.0%. Students identifying with two or more races steadily improved from 11.9% to 17.0% over the same period. Latinx students showed modest growth, peaking at 12.2% in 2020-2021 and ending at 10.9%, while Black students remained the lowest group, increasing gradually from 5.7% in 2017-2018 to 9.8% in 2021-2022.

### COMPLETION RATE OF VISION GOAL, CHANCELLOR'S OFFICE DEFINITION BY ETHNIC/RACIAL GROUP



Source: California Community Colleges Data Vista

**Table 18: Vision Goal Completion by Ethnic/Racial Group**

This graph shows Vision Goal completion, as defined by the California Community Colleges Chancellor's Office, disaggregated by race and ethnicity from 2015-2016 to 2019-2020. Asian students consistently had the highest rates, rising from 24.0% in 2015-2016 to 26.9% in 2017-2018, dipping to 18.5% in 2018-2019, and rebounding to 26.8% in 2019-2020. White students also increased steadily, from 15.4% in 2015-2016 to 22.4% in 2019-2020. Latinx and students identifying with two or more races improved to the 12-13% range by 2019-2020, while Black students, although showing gradual growth, remained the lowest group, increasing from 5.0% to 9.5% over the period.

GRADE DISTRIBUTION														
	A	B	C	D	EW	F	IP	IX	NP	P	RD	UG	W	TOTAL
Fall 2017	29,488	16,441	10,280	3,894	0	7,147	4	357	381	1,994	4	5,866	15,154	91,010
	32.4%	18.1%	11.3%	4.3%	0.0%	7.9%	0.0%	0.4%	0.4%	2.2%	0.0%	6.4%	16.7%	100.0%
Fall 2018	29,516	15,938	9,489	3,682	0	7,412	4	321	677	2,335	165	6,277	15,020	90,836
	32.5%	17.5%	10.4%	4.1%	0.0%	8.2%	0.0%	0.4%	0.7%	2.6%	0.2%	6.9%	16.5%	100.0%
Fall 2019	29,650	15,071	8,815	3,397	0	7,627	0	384	1,426	2,993	76	6,625	14,525	90,589
	32.7%	16.6%	9.7%	3.7%	0.0%	8.4%	0.0%	0.4%	1.6%	3.3%	0.1%	7.3%	16.0%	100.0%
Fall 2020	31,242	12,363	6,527	2,564	37	7,047	0	466	1,310	2,738	32	6,272	12,615	83,213
	37.5%	14.9%	7.8%	3.1%	0.0%	8.5%	0.0%	0.6%	1.6%	3.3%	0.0%	7.5%	15.2%	100.0%
Fall 2021	26,323	10,879	5,903	2,268	13,371	6,874	0	283	1,105	2,756	0	4,594	133	74,489
	35.3%	14.6%	7.9%	3.0%	18.0%	9.2%	0.0%	0.4%	1.5%	3.7%	0.0%	6.2%	0.2%	100.0%
Fall 2022	25,503	10,175	5,761	2,321	104	6,976	0	376	1,846	2,950	2	4,501	11,928	72,443
	35.2%	14.0%	8.0%	3.2%	0.1%	9.6%	0.0%	0.5%	2.5%	4.1%	0.0%	6.2%	16.5%	100.0%
Fall 2023	28,307	10,548	5,668	2,187	6,001	6,349	0	407	2,192	3,539	0	4,985	6,998	77,181
	36.7%	13.7%	7.3%	2.8%	7.8%	8.2%	0.0%	0.5%	2.8%	4.6%	0.0%	6.5%	9.1%	100.0%
Fall 2024	28,759	10,271	5,626	2,153	5,509	6,410	0	264	2,329	3,736	21	5,071	7,281	77,430
	37.1%	13.3%	7.3%	2.8%	7.1%	8.3%	0.0%	0.3%	3.0%	4.8%	0.0%	6.5%	9.4%	100.0%
Change	4.7%	-4.8%	-4.0%	-1.5%	7.1%	0.4%	0.0%	-0.1%	2.6%	2.6%	0.0%	0.1%	-7.2%	0.0%

Source: Precision Campus

**Table 19: Grade Distribution**

This table displays the grade distribution across all courses at Santa Monica College over eight fall terms. A grades have increased by 4.7 percentage points, rising from 32.4% in Fall 2017 to 37.1% in Fall 2024, while B and C grades declined by 4.8 and 4.0 points, respectively. The Emergency Withdrawal (EW) grade, introduced during the pandemic, peaked at 18% in Fall 2021 and has since decreased but remains a notable portion of outcomes. Non-passing grades (F and NP) saw a modest increase overall. The W (Withdrawal) rate dropped from a high of 16.7% in 2017 to 9.4% in 2024, indicating a significant 7.2 percentage point decline.

Grade Distribution by Ethnic Racial Group – Asian Students														
	A	B	C	D	EW	F	IP	IX	NP	P	RD	UG	W	TOTAL
Fall 2017	6,134	2,499	1,311	514	0	854	0	23	140	616	0	764	1,539	14,394
	42.6%	17.4%	9.1%	3.6%	0.0%	5.9%	0.0%	0.2%	1.0%	4.3%	0.0%	5.3%	10.7%	100.0%
Fall 2018	5,088	2,105	1,056	382	0	692	1	21	90	360	18	808	1,484	12,105
	42.0%	17.4%	8.7%	3.2%	0.0%	5.7%	0.0%	0.2%	0.7%	3.0%	0.1%	6.7%	12.3%	100.0%
Fall 2019	3,782	1,499	825	255	0	519	0	25	93	317	2	850	1,195	9,362
	40.4%	16.0%	8.8%	2.7%	0.0%	5.5%	0.0%	0.3%	1.0%	3.4%	0.0%	9.1%	12.8%	100.0%
Fall 2020	3,376	1,052	452	156	1	354	0	26	47	252	1	697	931	7,345
	46.0%	14.3%	6.2%	2.1%	0.0%	4.8%	0.0%	0.4%	0.6%	3.4%	0.0%	9.5%	12.7%	100.0%
Fall 2021	2,851	967	402	133	1,103	384	0	22	73	312	0	480	13	6,740
	42.3%	14.3%	6.0%	2.0%	16.4%	5.7%	0.0%	0.3%	1.1%	4.6%	0.0%	7.1%	0.2%	100.0%
Fall 2022	2,595	848	408	148	10	378	0	31	142	355	0	503	1,007	6,425
	40.4%	13.2%	6.4%	2.3%	0.2%	5.9%	0.0%	0.5%	2.2%	5.5%	0.0%	7.8%	15.7%	100.0%
Fall 2023	2,748	821	336	146	495	303	0	30	164	473	0	511	627	6,654
	41.3%	12.3%	5.0%	2.2%	7.4%	4.6%	0.0%	0.5%	2.5%	7.1%	0.0%	7.7%	9.4%	100.0%
Fall 2024	2,668	732	336	125	433	290	0	15	194	480	0	522	635	6,430
	41.5%	11.4%	5.2%	1.9%	6.7%	4.5%	0.0%	0.2%	3.0%	7.5%	0.0%	8.1%	9.9%	100.0%
Change	-1.1%	-6.0%	-3.9%	-1.7%	6.7%	-1.4%	0.0%	0.0%	2.0%	3.2%	0.0%	2.8%	-0.8%	0.0%

Source: Precision Campus

**Table 20: Grade Distribution by Ethnic/Racial Group – Asian Students**

The percentage of A grades remained relatively high, fluctuating between 40–46%, with a slight decrease of 1.1 percentage points over the period. B and C grades saw notable declines of 6.0% and 3.9%, respectively. The Emergency Withdrawal (EW) category spiked dramatically in Fall 2021 to 16.4%—a pandemic-related peak—before stabilizing around 6–7% in recent years. Withdrawal (W) rates also fluctuated, peaking in 2022 at 15.7% and dropping to 9.9% in 2024. Over time, there has been a modest increase in NP (No Pass) and P (Pass) grades.

GRADE DISTRIBUTION BY ETHNIC/RACIAL GROUP – BLACK STUDENTS														
	A	B	C	D	EW	F	IP	IX	NP	P	RD	UG	W	TOTAL
Fall 2017	1,574	1,275	989	416	0	948	3	59	23	113	0	153	1,784	7,337
	21.5%	17.4%	13.5%	5.7%	0.0%	12.9%	0.0%	0.8%	0.3%	1.5%	0.0%	2.1%	24.3%	100.0%
Fall 2018	1,508	1,144	977	389	0	909	2	48	67	190	6	192	1,745	7,177
	21.0%	15.9%	13.6%	5.4%	0.0%	12.7%	0.0%	0.7%	0.9%	2.6%	0.1%	2.7%	24.3%	100.0%
Fall 2019	1,510	1,152	840	359	0	962	0	57	140	198	5	204	1,690	7,117
	21.2%	16.2%	11.8%	5.0%	0.0%	13.5%	0.0%	0.8%	2.0%	2.8%	0.1%	2.9%	23.7%	100.0%
Fall 2020	1,556	949	647	280	4	788	0	69	123	204	4	194	1,306	6,124
	25.4%	15.5%	10.6%	4.6%	0.1%	12.9%	0.0%	1.1%	2.0%	3.3%	0.1%	3.2%	21.3%	100.0%
Fall 2021	1,329	893	624	254	1,414	864	0	42	113	188	0	143	1	5,865
	22.7%	15.2%	10.6%	4.3%	24.1%	14.7%	0.0%	0.7%	1.9%	3.2%	0.0%	2.4%	0.0%	100.0%
Fall 2022	1,382	863	615	277	2	902	0	44	186	198	0	149	1,431	6,049
	22.8%	14.3%	10.2%	4.6%	0.0%	14.9%	0.0%	0.7%	3.1%	3.3%	0.0%	2.5%	23.7%	100.0%
Fall 2023	1,779	962	646	275	726	827	0	49	183	226	0	193	819	6,685
	26.6%	14.4%	9.7%	4.1%	10.9%	12.4%	0.0%	0.7%	2.7%	3.4%	0.0%	2.9%	12.3%	100.0%
Fall 2024	1,832	1,014	612	260	672	841	0	36	210	234	3	202	733	6,649
	27.6%	15.3%	9.2%	3.9%	10.1%	12.6%	0.0%	0.5%	3.2%	3.5%	0.0%	3.0%	11.0%	100.0%
Change	6.1%	-2.1%	-4.3%	-1.8%	10.1%	-0.3%	0.0%	-0.3%	2.9%	2.0%	0.0%	0.9%	-13.3%	0.0%

Source: Precision Campus

**Table 21: Grade Distribution by Ethnic/Racial Group – Black Students**

A grades increased by 6.1 percentage points—from 21.5% in Fall 2017 to 27.6% in Fall 2024—while grades of B, C, and D declined modestly. Emergency Withdrawals (EW) saw a major spike in Fall 2021 at 24.1% due to the pandemic, but have since decreased to 10.1% in Fall 2024. Withdrawal (W) rates declined significantly, from a high of 24.3% in earlier years to 11.0% in 2024—a 13.3 percentage point drop. During the same period, grades of No Pass (NP) and Pass (P) saw increases of 2.9% and 2.0%, respectively.

GRADE DISTRIBUTION BY ETHNIC/RACIAL GROUP – LATINX STUDENTS													
	A	B	C	D	EW	F	IX	NP	P	RD	UG	W	TOTAL
Fall 2017	8,074	6,603	4,965	1,957	0	3,477	126	92	545	2	473	7,062	33,376
	24.2%	19.8%	14.9%	5.9%	0.0%	10.4%	0.4%	0.3%	1.6%	0.0%	1.4%	21.2%	100.0%
Fall 2018	8,164	6,379	4,401	1,877	0	3,822	109	354	808	72	569	6,902	33,457
	24.4%	19.1%	13.2%	5.6%	0.0%	11.4%	0.3%	1.1%	2.4%	0.2%	1.7%	20.6%	100.0%
Fall 2019	8,579	6,214	4,230	1,780	0	3,935	138	843	1,195	20	664	6,802	34,400
	24.9%	18.1%	12.3%	5.2%	0.0%	11.4%	0.4%	2.5%	3.5%	0.1%	1.9%	19.8%	100.0%
Fall 2020	9,463	5,491	3,294	1,370	12	3,881	196	818	1,076	15	513	6,140	32,269
	29.3%	17.0%	10.2%	4.2%	0.0%	12.0%	0.6%	2.5%	3.3%	0.0%	1.6%	19.0%	100.0%
Fall 2021	8,211	4,604	2,898	1,194	6,570	3,680	109	594	976	0	172	27	29,035
	28.3%	15.9%	10.0%	4.1%	22.6%	12.7%	0.4%	2.0%	3.4%	0.0%	0.6%	0.1%	100.0%
Fall 2022	8,095	4,406	2,790	1,176	18	3,720	174	906	1,059	2	197	5,736	28,279
	28.6%	15.6%	9.9%	4.2%	0.1%	13.2%	0.6%	3.2%	3.7%	0.0%	0.7%	20.3%	100.0%
Fall 2023	8,847	4,490	2,742	1,106	2,886	3,298	157	986	1,223	0	250	2,984	28,969
	30.5%	15.5%	9.5%	3.8%	10.0%	11.4%	0.5%	3.4%	4.2%	0.0%	0.9%	10.3%	100.0%
Fall 2024	9,160	4,552	2,782	1,135	2,593	3,195	97	1,027	1,319	8	289	2,977	29,134
	31.4%	15.6%	9.5%	3.9%	8.9%	11.0%	0.3%	3.5%	4.5%	0.0%	1.0%	10.2%	100.0%
Change	7.2%	-4.2%	-5.4%	-2.0%	8.9%	0.6%	-0.1%	3.2%	2.9%	0.0%	-0.4%	-11.0%	0.0%

Source: Precision Campus

**Table 22: Grade Distribution by Ethnic/Racial Group – Latinx Students**

The percentage of A grades rose by 7.2 percentage points—from 24.2% in Fall 2017 to 31.4% in Fall 2024—while B, C, and D grades declined. Emergency Withdrawals (EW) spiked to 22.6% in Fall 2021 during the pandemic and have since dropped to 8.9% in Fall 2024. Withdrawal (W) rates also fell sharply, decreasing by 11 percentage points over the period. Grades of No Pass (NP) and Pass (P) both increased moderately, by 3.2% and 2.9% respectively. Grades of No Pass (NP) and Pass (P) both increased moderately, by 3.2% and 2.9% respectively.

GRADE DISTRIBUTION BY ETHNIC/RACIAL GROUP – NATIVE AMERICAN STUDENTS													
	A	B	C	D	EW	F	IX	NP	P	RD	UG	W	TOTAL
Fall 2017	37	23	18	7	0	20	1	1	1	0	16	35	159
	23.3%	14.5%	11.3%	4.4%	0.0%	12.6%	0.6%	0.6%	0.6%	0.0%	10.1%	22.0%	100.0%
Fall 2018	32	19	19	7	0	9	3	0	2	1	21	41	154
	20.8%	12.3%	12.3%	4.5%	0.0%	5.8%	1.9%	0.0%	1.3%	0.6%	13.6%	26.6%	100.0%
Fall 2019	56	19	13	7	0	18	3	2	5	1	20	34	178
	31.5%	10.7%	7.3%	3.9%	0.0%	10.1%	1.7%	1.1%	2.8%	0.6%	11.2%	19.1%	100.0%
Fall 2020	37	18	8	2	0	12	1	0	4	0	15	37	134
	27.6%	13.4%	6.0%	1.5%	0.0%	9.0%	0.7%	0.0%	3.0%	0.0%	11.2%	27.6%	100.0%
Fall 2021	21	12	10	1	30	17	1	3	2	0	13	0	110
	19.1%	10.9%	9.1%	0.9%	27.3%	15.5%	0.9%	2.7%	1.8%	0.0%	11.8%	0.0%	100.0%
Fall 2022	22	8	5	2	0	9	0	3	5	0	21	33	108
	20.4%	7.4%	4.6%	1.9%	0.0%	8.3%	0.0%	2.8%	4.6%	0.0%	19.4%	30.6%	100.0%
Fall 2023	15	15	12	5	8	7	0	1	7	0	20	11	101
	14.9%	14.9%	11.9%	5.0%	7.9%	6.9%	0.0%	1.0%	6.9%	0.0%	19.8%	10.9%	100.0%
Fall 2024	23	18	14	4	9	10	1	3	7	0	14	8	111
	20.7%	16.2%	12.6%	3.6%	8.1%	9.0%	0.9%	2.7%	6.3%	0.0%	12.6%	7.2%	100.0%
Change	-2.6%	1.7%	1.3%	-0.8%	8.1%	-3.6%	0.3%	2.1%	5.7%	0.0%	2.5%	-14.8%	0.0%

Source: Precision Campus

**Table 23: Grade Distribution by Ethnic/Racial Group – Native American Students**

A grades fluctuated slightly and ultimately declined by 2.6 percentage points from 23.3% in 2017 to 20.7% in 2024, while B and C grades increased modestly. Emergency Withdrawals (EW) peaked sharply in Fall 2021 at 27.3%—coinciding with the height of the COVID-19 pandemic—but stabilized around 8% by Fall 2024. Withdrawal (W) rates declined significantly, from 22.0% in 2017 to 7.2% in 2024, a 14.8-point decrease. During this same period, No Pass (NP) and Pass (P) grades both rose, reflecting a shift toward more flexible or alternative grading outcomes. Due to small cohort sizes, year-over-year variation remains high.

Grade Distribution by Ethnic/Racial Group - Pacific Islander Students													
	A	B	C	D	EW	F	IX	NP	P	RD	UG	W	TOTAL
Fall 2017	66	57	27	9	0	21	0	1	5	0	9	48	243
	27.2%	23.5%	11.1%	3.7%	0.0%	8.6%	0.0%	0.4%	2.1%	0.0%	3.7%	19.8%	100.0%
Fall 2018	31	28	19	5	0	22	0	0	2	1	9	31	148
	20.9%	18.9%	12.8%	3.4%	0.0%	14.9%	0.0%	0.0%	1.4%	0.7%	6.1%	20.9%	100.0%
Fall 2019	39	23	15	6	0	18	0	2	2	0	9	37	151
	25.8%	15.2%	9.9%	4.0%	0.0%	11.9%	0.0%	1.3%	1.3%	0.0%	6.0%	24.5%	100.0%
Fall 2020	45	22	12	5	0	17	0	2	4	0	13	26	146
	30.8%	15.1%	8.2%	3.4%	0.0%	11.6%	0.0%	1.4%	2.7%	0.0%	8.9%	17.8%	100.0%
Fall 2021	36	22	12	4	32	11	1	3	2	0	13	0	136
	26.5%	16.2%	8.8%	2.9%	23.5%	8.1%	0.7%	2.2%	1.5%	0.0%	9.6%	0.0%	100.0%
Fall 2022	27	18	10	0	3	8	1	0	1	0	15	16	99
	27.3%	18.2%	10.1%	0.0%	3.0%	8.1%	1.0%	0.0%	1.0%	0.0%	15.2%	16.2%	100.0%
Fall 2023	29	9	6	0	7	3	0	1	0	0	17	6	78
	37.2%	11.5%	7.7%	0.0%	9.0%	3.8%	0.0%	1.3%	0.0%	0.0%	21.8%	7.7%	100.0%
Fall 2024	28	15	3	3	9	6	0	2	3	0	14	16	99
	28.3%	15.2%	3.0%	3.0%	9.1%	6.1%	0.0%	2.0%	3.0%	0.0%	14.1%	16.2%	100.0%
Change	1.1%	-8.3%	-8.1%	-0.7%	9.1%	-2.5%	0.0%	1.6%	0.9%	0.0%	10.4%	-3.6%	0.0%

Source: Precision Campus

**Table 24: Grade Distribution by Ethnic/Racial Group – Pacific Islander Students**

A grades increased slightly by 1.1 percentage points to 28.3% in Fall 2024, while B and C grades saw more notable declines of 8.3% and 8.1%, respectively. Emergency Withdrawal (EW) grades rose from 0% in 2017 to 9.1% in 2024, reflecting a lasting impact from pandemic-related disruptions. Withdrawal (W) rates fluctuated, peaking at 24.5% in 2019 and falling to 16.2% in 2024. Notably, the use of Pass (P) grades more than doubled over time, rising by 10.4%, while Fail (F) grades declined by 2.5%. Due to the small cohort size, year-to-year shifts may be amplified. Due to the small cohort size, year-to-year shifts may be amplified.

GRADE DISTRIBUTION BY ETHNIC/RACIAL GROUP — TWO OR MORE RACES STUDENTS													
	A	B	C	D	EW	F	IX	NP	P	RD	UG	W	TOTAL
Fall 2017	1,319	715	401	139	0	344	20	6	37	0	17	765	3,763
	35.1%	19.0%	10.7%	3.7%	0.0%	9.1%	0.5%	0.2%	1.0%	0.0%	0.5%	20.3%	100.0%
Fall 2018	1,384	744	400	140	0	344	17	18	62	11	30	819	3,969
	34.9%	18.7%	10.1%	3.5%	0.0%	8.7%	0.4%	0.5%	1.6%	0.3%	0.8%	20.6%	100.0%
Fall 2019	1,329	706	404	170	0	320	23	58	99	2	43	609	3,763
	35.3%	18.8%	10.7%	4.5%	0.0%	8.5%	0.6%	1.5%	2.6%	0.1%	1.1%	16.2%	100.0%
Fall 2020	1,555	601	301	120	2	334	29	40	114	0	39	606	3,741
	41.6%	16.1%	8.0%	3.2%	0.1%	8.9%	0.8%	1.1%	3.0%	0.0%	1.0%	16.2%	100.0%
Fall 2021	1,436	602	324	112	667	356	16	44	91	0	12	5	3,665
	39.2%	16.4%	8.8%	3.1%	18.2%	9.7%	0.4%	1.2%	2.5%	0.0%	0.3%	0.1%	100.0%
Fall 2022	1,408	521	307	122	13	345	18	82	84	0	24	649	3,573
	39.4%	14.6%	8.6%	3.4%	0.4%	9.7%	0.5%	2.3%	2.4%	0.0%	0.7%	18.2%	100.0%
Fall 2023	1,538	568	299	118	357	362	41	86	136	0	25	353	3,883
	39.6%	14.6%	7.7%	3.0%	9.2%	9.3%	1.1%	2.2%	3.5%	0.0%	0.6%	9.1%	100.0%
Fall 2024	1,539	507	283	105	371	319	18	104	115	1	37	319	3,718
	41.4%	13.6%	7.6%	2.8%	10.0%	8.6%	0.5%	2.8%	3.1%	0.0%	1.0%	8.6%	100.0%
Change	6.3%	-5.4%	-3.1%	-0.9%	9.9%	-0.5%	0.0%	2.6%	2.1%	0.0%	0.5%	-11.7%	0.0%

Source: Precision Campus

**Table 25: Grade Distribution by Ethnic/Racial Group – Two or More Races Students**

A grades increased from 35.1% to 41.4%, a rise of 6.3 percentage points, while B and C grades declined by 5.4% and 3.1%, respectively. Emergency Withdrawals (EW) spiked significantly in Fall 2021 to 18.2% during the pandemic but remained elevated in subsequent years, ending at 10.0% in Fall 2024. Withdrawal (W) grades dropped by nearly 12 points over the period, from 20.3% in 2017 to 8.6% in 2024. There was also a modest increase in No Pass (NP) and Pass (P) grades, reflecting a broader trend toward more flexible and supportive grading options.

GRADE DISTRIBUTION BY ETHNIC/RACIAL GROUP – WHITE STUDENTS														
	A	B	C	D	EW	F	IP	IX	NP	P	RD	UG	W	TOTAL
Fall 2017	10,104	4,273	2,035	628	0	1,105	1	109	45	364	1	3,909	3,462	26,036
	38.8%	16.4%	7.8%	2.4%	0.0%	4.2%	0.0%	0.4%	0.2%	1.4%	0.0%	15.0%	13.3%	100.0%
Fall 2018	10,006	4,018	1,896	595	0	1,138	1	99	68	424	48	4,048	3,377	25,718
	38.9%	15.6%	7.4%	2.3%	0.0%	4.4%	0.0%	0.4%	0.3%	1.6%	0.2%	15.7%	13.1%	100.0%
Fall 2019	8,875	3,260	1,471	440	0	997	0	83	129	523	10	4,238	3,078	23,104
	38.4%	14.1%	6.4%	1.9%	0.0%	4.3%	0.0%	0.4%	0.6%	2.3%	0.0%	18.3%	13.3%	100.0%
Fall 2020	10,107	2,850	1,184	385	15	1,056	0	101	138	614	9	4,303	2,834	23,596
	42.8%	12.1%	5.0%	1.6%	0.1%	4.5%	0.0%	0.4%	0.6%	2.6%	0.0%	18.2%	12.0%	100.0%
Fall 2021	8,679	2,579	1,091	341	2,936	1,018	0	65	136	627	0	3,449	25	20,946
	41.4%	12.3%	5.2%	1.6%	14.0%	4.9%	0.0%	0.3%	0.6%	3.0%	0.0%	16.5%	0.1%	100.0%
Fall 2022	8,128	2,308	1,040	354	37	1,040	0	78	258	653	0	3,296	2,394	19,586
	41.5%	11.8%	5.3%	1.8%	0.2%	5.3%	0.0%	0.4%	1.3%	3.3%	0.0%	16.8%	12.2%	100.0%
Fall 2023	8,795	2,405	1,022	323	1,256	1,103	0	86	368	805	0	3,644	1,724	21,531
	40.8%	11.2%	4.7%	1.5%	5.8%	5.1%	0.0%	0.4%	1.7%	3.7%	0.0%	16.9%	8.0%	100.0%
Fall 2024	8,798	2,256	1,009	327	1,195	1,342	0	68	371	844	5	3,664	2,116	21,995
	40.0%	10.3%	4.6%	1.5%	5.4%	6.1%	0.0%	0.3%	1.7%	3.8%	0.0%	16.7%	9.6%	100.0%
Change	1.2%	-6.1%	-3.2%	-0.9%	5.3%	1.9%	0.0%	-0.1%	1.5%	2.4%	0.0%	1.7%	-3.7%	0.0%

Source: Precision Campus

**Table 26: Grade Distribution by Ethnic/Racial Group – White Students**

A grades rose modestly by 1.2 percentage points to 40.0% in Fall 2024, while B and C grades decreased by 6.1% and 3.2%, respectively. Emergency Withdrawal (EW) grades surged to 14.0% in Fall 2021 during the pandemic and have since declined to 5.4% in 2024. Failing grades (F) increased slightly, while No Pass (NP) and Pass (P) grades also rose—reflecting increased use of alternative grading practices. Withdrawal (W) rates dropped by 3.7 percentage points over the period, indicating improved course completion.

DEGREES AWARDED								
AWARD TYPE	2017-2018	2018-2019	2019-2020	2020-2021	2021-2022	2022-2023	2023-2024	6-YEAR CHANGE
<b>A.A.</b>	2,627	2,154	2,066	2,083	1,976	3,504	5,627	114%
<b>A.A.-T</b>	459	593	796	855	768	770	948	107%
<b>A.S.</b>	421	480	517	591	531	605	864	105%
<b>A.S.-T</b>	316	309	358	405	397	293	212	-33%
<b>B.S.</b>	13	22	15	26	21	27	16	23%
<b>Certificate 16 to 29 Units</b>	294	195	820	761	1,084	764	1,200	308%
<b>Certificate 30+ Units</b>	2,094	5,125	3,995	3,695	3,407	2,845	4,905	134%
<b>Noncredit Certificate</b>	0	38	78	156	143	219	392	932%

Source: Precision Campus

**Table 27: Degrees Awarded**

The most significant increases occurred in short-term (16-29 unit) certificates and noncredit certificates, which grew by 308% and 932%, respectively. Traditional Associate degrees (A.A. and A.S.) and transfer degrees (A.A.-T) also saw substantial gains — more than doubling in some cases — reflecting expanded program offerings and student completion initiatives. In contrast, awards of the Associate in Science for Transfer (A.S.-T) declined by 33%. Overall, the data highlight Santa Monica College's increasing focus on both workforce credentials and academic transfer readiness.

CSU AND UC TRANSFERS BY COMMUNITY COLLEGE					
Rank	College	Transfers	Rank	College	Transfers
1	DE ANZA COMMUNITY COLLEGE	2,144	26	SOUTHWESTERN COLLEGE	1,071
2	MOUNT SAN ANTONIO COLLEGE	2,092	27	SACRAMENTO CITY COLLEGE	1,052
3	PASADENA CITY COLLEGE	2,064	28	AMERICAN RIVER COLLEGE	1,036
4	<b>SANTA MONICA COLLEGE</b>	<b>2,054</b>	29	CITY COLLEGE OF SAN FRANCISCO	1,012
5	EL CAMINO COLLEGE	1,696	30	GLENDALE COMMUNITY COLLEGE	988
6	ORANGE COAST COLLEGE	1,673	31	SAN JOAQUIN DELTA COLLEGE	953
7	DIABLO VALLEY COLLEGE	1,641	32	COSUMNES RIVER COLLEGE	934
8	LONG BEACH CITY COLLEGE	1,524	33	SANTA ROSA JUNIOR COLLEGE	895
9	LOS ANGELES PIERCE COLLEGE	1,459	34	CYPRESS COLLEGE	881
10	FULLERTON COLLEGE	1,455	35	CITRUS COLLEGE	866
11	SANTA BARBARA CITY COLLEGE	1,289	36	LOS ANGELES VALLEY COLLEGE	865
12	SADDLEBACK COLLEGE	1,268	37	GROSSMONT COLLEGE	846
13	MOORPARK COLLEGE	1,264	38	MIRACOSTA COLLEGE	843
14	BAKERSFIELD COLLEGE	1,261	39	RIO HONDO COMMUNITY COLLEGE	803
15	EAST LOS ANGELES COLLEGE	1,250	40	GOLDEN WEST COLLEGE	784
16	COLLEGE OF THE CANYONS	1,244	41	CHABOT COLLEGE	775
17	SIERRA COLLEGE	1,236	42	SANTIAGO CANYON COLLEGE	772
18	IRVINE VALLEY COLLEGE	1,219	43	COLLEGE OF THE SEQUOIAS	760
19	RIVERSIDE CITY COLLEGE	1,148	44	MOUNT SAN JACINTO COLLEGE	740
20	PALOMAR COLLEGE	1,146	45	VENTURA COLLEGE	730
21	CERRITOS COLLEGE	1,144	46	OHLONE COLLEGE	708
22	MODESTO JUNIOR COLLEGE	1,132	47	LAS POSITAS COLLEGE	684
23	FRESNO CITY COLLEGE	1,115	48	MERCED COMMUNITY COLLEGE	677
24	SAN DIEGO MESA COLLEGE	1,112	49	CLOVIS COMMUNITY COLLEGE	663
25	CHAFFEY COLLEGE	1,092	50	BUTTE COLLEGE	662

Source: University of California and California State University

**Table 28: CSU and UC Transfers by Community College**

Beginning with the table above, the seven-table series that follows presents detailed transfer data from California Community Colleges to the University of California (UC) and California State University (CSU) systems for the 2023-2024 academic year. It includes overall transfer counts to UC, CSU, and both systems combined, along with disaggregated data for African American and Latinx students. Santa Monica College ranks among the top transfer institutions statewide and holds the top spot for African American and Latinx transfers to the UC system.

UC TRANSFERS BY COMMUNITY COLLEGE					
Rank	College	Transfers	Rank	College	Transfers
1	SANTA MONICA COLLEGE	983	26	SAN DIEGO MIRAMAR COLLEGE	217
2	DE ANZA COMMUNITY COLLEGE	866	27	PALOMAR COLLEGE	202
3	DIABLO VALLEY COLLEGE	806	28	LAS POSITAS COLLEGE	201
4	SANTA BARBARA CITY COLLEGE	804	29	AMERICAN RIVER COLLEGE	199
5	PASADENA CITY COLLEGE	784	30	SANTIAGO CANYON COLLEGE	195
6	IRVINE VALLEY COLLEGE	704	31	CHABOT COLLEGE	184
7	MOUNT SAN ANTONIO COLLEGE	486	32	FULLERTON COLLEGE	183
8	ORANGE COAST COLLEGE	479	33	SANTA ROSA JUNIOR COLLEGE	182
9	SADDLEBACK COLLEGE	443	34	WEST VALLEY COLLEGE	175
10	EL CAMINO COLLEGE	387	35	CABRILLO COLLEGE	169
11	MOORPARK COLLEGE	387	36	SOUTHWESTERN COLLEGE	158
12	LOS ANGELES PIERCE COLLEGE	352	37	LOS ANGELES VALLEY COLLEGE	155
13	CITY COLLEGE OF SAN FRANCISCO	309	38	CITRUS COMMUNITY COLLEGE	153
14	RIVERSIDE CITY COLLEGE	307	39	FOLSOM LAKE COLLEGE	151
15	FOOTHILL COLLEGE	304	40	CYPRESS COLLEGE	149
16	MIRACOSTA COLLEGE	269	41	CONSUMNES RIVER COLLEGE	144
17	SAN DIEGO MESA COLLEGE	268	42	CHAFFEY COMMUNITY COLLEGE	139
18	GLENDALE COMMUNITY COLLEGE	263	43	EAST LOS ANGELES COLLEGE	139
19	COLLEGE OF THE CANYONS	252	44	LONG BEACH CITY COLLEGE	138
20	SACRAMENTO CITY COLLEGE	242	45	VENTURA COLLEGE	136
21	SIERRA COLLEGE	235	46	GOLDEN WEST COLLEGE	126
22	OHLONE COLLEGE	234	47	COLLEGE OF MARIN	125
23	MOUNT SAN JACINTO COLLEGE	227	48	NORCO COLLEGE	120
24	COLLEGE OF SAN MATEO	226	49	CERRITOS COMMUNITY COLLEGE	117
25	BERKELEY CITY COLLEGE	221	50	GROSSMONT COLLEGE	115

Source: University of California

**Table 29: UC Transfers by Community College**

See summary caption at start of transfer series tables.

AFRICAN-AMERICAN UC TRANSFERS BY COMMUNITY COLLEGE					
Rank	College	Transfers	Rank	College	Transfers
1	SANTA MONICA COLLEGE	84	26	MERRITT COLLEGE	11
2	EL CAMINO COLLEGE	33	27	MOORPARK COLLEGE	11
3	PASADENA CITY COLLEGE	30	28	SAN DIEGO MIRAMAR COLLEGE	10
4	SAN DIEGO MESA COLLEGE	26	29	WEST LOS ANGELES COLLEGE	10
5	BERKELEY CITY COLLEGE	25	30	LOS MEDANOS COLLEGE	9
6	RIVERSIDE COLLEGE	24	31	MORENO VALLEY COLLEGE	9
7	DIABLO VALLEY COLLEGE	23	32	MOUNT SAN ANTONIO COLLEGE	9
8	LOS ANGELES PIERCE COLLEGE	20	33	ORANGE COAST COLLEGE	9
9	LAS POSITAS COLLEGE	19	34	COLLEGE OF SAN MATEO	8
10	MOUNT SAN JACINTO COLLEGE	18	35	COSUMNES RIVER COLLEGE	8
11	DE ANZA COLLEGE	17	36	FOLSOM LAKE COLLEGE	8
12	SACRAMENTO CITY COLLEGE	17	37	FULLERTON COLLEGE	8
13	SANTA BARBARA CITY COLLEGE	17	38	GROSSMONT COLLEGE	8
14	SADDLEBACK COLLEGE	16	39	IRVINE VALLEY COLLEGE	8
15	AMERICAN RIVER COLLEGE	15	40	NORCO COLLEGE	8
16	MIRA COSTA COLLEGE	15	41	PALOMAR COLLEGE	8
17	SOUTHWESTERN COLLEGE	15	42	SANTA ROSA JUNIOR COLLEGE	8
18	CHABOT COLLEGE	14	43	SOLANO COLLEGE	8
19	CHAFFEY COLLEGE	14	44	CERRITOS COLLEGE	7
20	SAN DIEGO CITY COLLEGE	14	45	COLLEGE OF MARIN	7
21	COLLEGE OF THE CANYONS	13	46	LOS ANGELES VALLEY COLLEGE	7
22	LANEY COLLEGE	12	47	CITY COLLEGE OF SAN FRANCISCO	6
23	FOOTHILL COLLEGE	11	48	COLLEGE OF THE DESERT	6
24	LONG BEACH CITY COLLEGE	11	49	MODESTO JUNIOR COLLEGE	6
25	LOS ANGELES CITY COLLEGE	11	50	MONTEREY PENINSULA COLLEGE	6

Source: University of California

**Table 30: African American UC Transfers by Community College**

See summary caption at start of transfer series tables.

HISPANIC UC TRANSFERS BY COMMUNITY COLLEGE					
Rank	College	Transfers	Rank	College	Transfers
1	SANTA MONICA COLLEGE	217	26	MIRA COSTA COLLEGE	59
2	SANTA BARBARA CITY COLLEGE	185	27	LONG BEACH CITY COLLEGE	57
3	RIVERSIDE COLLEGE	172	28	MERCED COLLEGE	56
4	EL CAMINO COLLEGE	121	29	SANTA ANA COLLEGE	55
5	MOUNT SAN ANTONIO COLLEGE	119	30	SACRAMENTO CITY COLLEGE	53
6	MOUNT SAN JACINTO COLLEGE	119	31	PALOMAR COLLEGE	52
7	PASADENA CITY COLLEGE	112	32	SANTIAGO CANYON COLLEGE	51
8	DIABLO VALLEY COLLEGE	109	33	NORCO COLLEGE	49
9	MOORPARK COLLEGE	102	34	LOS ANGELES VALLEY COLLEGE	48
10	SOUTHWESTERN COLLEGE	101	35	SIERRA COLLEGE	48
11	SADDLEBACK COLLEGE	95	36	CABRILLO COLLEGE	47
12	LOS ANGELES PIERCE COLLEGE	92	37	CITRUS COLLEGE	45
13	DE ANZA COLLEGE	91	38	MORENO VALLEY COLLEGE	44
14	IRVINE VALLEY COLLEGE	88	39	FOOTHILL COLLEGE	43
15	COLLEGE OF THE CANYONS	83	40	GROSSMONT C OLLEGE	42
16	VENTURA COLLEGE	74	41	LOS MEDANOS COLLEGE	42
17	CERRITOS COLLEGE	67	42	SAN JOAQUIN DELTA COLLEGE	42
18	ORANGE COAST COLLEGE	67	43	CHABOT COLLEGE	41
19	SAN DIEGO MESA COLLEGE	65	44	ALLAN HANCOCK COLLEGE	40
20	EAST LOS ANGELES COLLEGE	64	45	MODESTO JUNIOR COLLEGE	40
21	RIO HONDO COLLEGE	63	46	CITY COLLEGE OF SAN FRANCISCO	38
22	CHAFFEY COLLEGE	62	47	BERKELEY CITY COLLEGE	37
23	FULLERTON COLLEGE	62	48	OXNARD COLLEGE	37
24	SANTA ROSA JUNIOR COLLEGE	61	49	SAN DIEGO CITY COLLEGE	36
25	COLLEGE OF THE DESERT	60	50	ANTELOPE VALLEY COLLEGE	35

Source: University of California

**Table 31: Hispanic UC Transfers by Community College**

See summary caption at start of transfer series tables.

CSU TRANSFERS BY COMMUNITY COLLEGE						
Rank	College	Transfers		Rank	College	Transfers
1	MOUNT SAN ANTONIO COLLEGE	1,606		26	SADDLEBACK COLLEGE	825
2	LONG BEACH CITY COLLEGE	1,386		27	SACRAMENTO CITY COLLEGE	810
3	EL CAMINO COLLEGE	1,309		28	CONSUMNES RIVER COLLEGE	790
4	PASADENA CITY COLLEGE	1,280		29	CYPRESS COLLEGE	732
5	DE ANZA COMMUNITY COLLEGE	1,278		30	GROSSMONT COLLEGE	731
6	FULLERTON COLLEGE	1,272		31	GLENDALE COMMUNITY COLLEGE	725
7	BAKERSFIELD COLLEGE	1,194		32	RIO HONDO COMMUNITY COLLEGE	724
8	ORANGE COAST COLLEGE	1,194		33	COLLEGE OF THE SEQUOIAS	715
9	EAST LOS ANGELES COLLEGE	1,111		34	CITRUS COMMUNITY COLLEGE	713
10	LOS ANGELES PIERCE COLLEGE	1,107		35	SANTA ROSA JUNIOR COLLEGE	713
11	SANTA MONICA COLLEGE	1,071		36	LOS ANGELES VALLEY COLLEGE	710
12	FRESNO CITY COLLEGE	1,068		37	CITY COLLEGE OF SAN FRANCISCO	703
13	MODESTO JUNIOR COLLEGE	1,031		38	GOLDEN WEST COLLEGE	658
14	CERRITOS COMMUNITY COLLEGE	1,027		39	BUTTE COLLEGE	614
15	SIERRA COLLEGE	1,001		40	IMPERIAL VALLEY COLLEGE	608
16	COLLEGE OF THE CANYONS	992		41	HARTNELL COMMUNITY COLLEGE	601
17	CHAFFEY COMMUNITY COLLEGE	953		42	VENTURA COLLEGE	594
18	PALOMAR COLLEGE	944		43	CHABOT COLLEGE	591
19	SOUTHWESTERN COLLEGE	913		44	MERCED COMMUNITY COLLEGE	582
20	MOORPARK COLLEGE	877		45	CLOVIS COMMUNITY COLLEGE	577
21	SAN JOAQUIN DELTA COLLEGE	863		46	SANTIAGO CANYON COLLEGE	577
22	SAN DIEGO MESA COLLEGE	844		47	MIRACOSTA COLLEGE	574
23	RIVERSIDE CITY COLLEGE	841		48	SANTA ANA COLLEGE	570
24	AMERICAN RIVER COLLEGE	837		49	ANTELOPE VALLEY COLLEGE	549
25	DIABLO VALLEY COLLEGE	835		50	IRVINE VALLEY COLLEGE	515

Source: California State University

**Table 32: CSU Transfers by Community College**

See summary caption at start of transfer series tables.

AFRICAN-AMERICAN CSU TRANSFERS BY COMMUNITY COLLEGE					
Rank	College	Transfers	Rank	College	Transfers
1	LONG BEACH CITY COLLEGE	126	26	LOS ANGELES TRADE-TECH COLLEGE	34
2	EL CAMINO COLLEGE	98	27	LOS MEDANOS COLLEGE	33
3	<b>SANTA MONICA COLLEGE</b>	<b>87</b>	28	DIABLO VALLEY COLLEGE	32
4	WEST LOS ANGELES COLLEGE	66	29	SAN DIEGO CITY COLLEGE	32
5	LOS ANGELES SOUTHWEST COLLEGE	62	30	VICTOR VALLEY COLLEGE	32
6	SACRAMENTO CITY COLLEGE	59	31	MODESTO JUNIOR COLLEGE	30
7	SAN DIEGO MESA COLLEGE	57	32	MOUNT SAN ANTONIO COLLEGE	30
8	SAN JOAQUIN DELTA COLLEGE	53	33	SIERRA COLLEGE	30
9	BAKERSFIELD COLLEGE	51	34	CONTRA COSTA COLLEGE	29
10	LOS ANGELES PIERCE COLLEGE	49	35	SAN JACINTO COLLEGE	29
11	RIVERSIDE COLLEGE	49	36	SOLANO COLLEGE	29
12	AMERICAN RIVER COLLEGE	48	37	DE ANZA COLLEGE	27
13	ANTELOPE VALLEY COLLEGE	48	38	PALOMAR COLLEGE	27
14	CHAFFEY COLLEGE	48	39	SOUTHWESTERN COLLEGE	26
15	CERRITOS COLLEGE	47	40	LOS ANGELES HARBOR COLLEGE	25
16	COSUMNES RIVER COLLEGE	47	41	CYPRESS COLLEGE	24
17	CITY COLLEGE OF SAN FRANCISCO	46	42	LOS ANGELES VALLEY COLLEGE	24
18	LANEY COLLEGE	44	43	BERKELEY CITY COLLEGE	23
19	FRESNO CITY COLLEGE	43	44	LOS ANGELES CITY COLLEGE	23
20	CHABOT COLLEGE	42	45	NORCO COLLEGE	22
21	GROSSMONT COLLEGE	41	46	FULLERTON COLLEGE	20
22	MERRITT COLLEGE	41	47	MORENO VALLEY COLLEGE	20
23	SAN BERNARDINO VALLEY COLLEGE	40	48	SANTA ROSA JUNIOR COLLEGE	18
24	COLLEGE OF THE CANYONS	37	49	CLOVIS COMMUNITY COLLEGE	16
25	PASADENA CITY COLLEGE	35	50	COMPTON COLLEGE	16

Source: California State University

**Table 33: African American CSU Transfers by Community College**

See summary caption at start of transfer series tables.

HISPANIC CSU TRANSFERS BY COMMUNITY COLLEGE					
Rank	College	Transfers	Rank	College	Transfers
1	MOUNT SAN ANTONIO COLLEGE	1,008	26	LOS ANGELES VALLEY COLLEGE	396
2	EAST LOS ANGELES COLLEGE	945	27	VENTURA COLLEGE	388
3	LONG BEACH CITY COLLEGE	829	28	DE ANZA COLLEGE	348
4	BAKERSFIELD COLLEGE	820	29	ORANGE COAST COLLEGE	346
5	FULLERTON COLLEGE	781	30	COLLEGE OF THE DESERT	342
6	CERRITOS COLLEGE	777	31	ANTELOPE VALLEY COLLEGE	338
7	EL CAMINO COLLEGE	690	32	CYPRESS COLLEGE	332
8	SOUTHWESTERN COLLEGE	661	33	REEDLEY COLLEGE	328
9	FRESNO CITY COLLEGE	653	34	MOORPARK COLLEGE	318
10	RIO HONDO COLLEGE	648	35	OXNARD COLLEGE	316
11	PASADENA CITY COLLEGE	640	36	LOS ANGELES MISSION COLLEGE	308
12	CHAFFEY COLLEGE	623	37	SAN BERNARDINO VALLEY COLLEGE	305
13	IMPERIAL VALLEY COLLEGE	573	38	SAN DIEGO MESA COLLEGE	288
14	MODESTO JUNIOR COLLEGE	556	39	LOS ANGELES CITY COLLEGE	284
15	LOS ANGELES PIERCE COLLEGE	548	40	SACRAMENTO CITY COLLEGE	284
16	<b>SANTA MONICA COLLEGE</b>	<b>537</b>	41	GROSSMONT COLLEGE	272
17	RIVERSIDE COLLEGE	535	42	MOUNT SAN JACINTO COLLEGE	264
18	HARTNELL COLLEGE	517	43	SANTIAGO CANYON COLLEGE	264
19	COLLEGE OF THE SEQUOIAS	512	44	SADDLEBACK COLLEGE	260
20	COLLEGE OF THE CANYONS	511	45	VICTOR VALLEY COLLEGE	260
21	CITRUS COLLEGE	494	46	SANTA ROSA JUNIOR COLLEGE	259
22	SANTA ANA COLLEGE	458	47	LOS ANGELES HARBOR COLLEGE	257
23	PALOMAR COLLEGE	442	48	SAN DIEGO CITY COLLEGE	251
24	SAN JOAQUIN DELTA COLLEGE	441	49	MIRA COSTA COLLEGE	246
25	MERCED COLLEGE	399	50	CHABOT COLLEGE	240

Source: California State University

**Table 34: Hispanic CSU Transfers by Community College**

See summary caption at start of transfer series tables.

SMC TO CSU TRANSFERS BY CAMPUS											
	2013 - 2014	2014 - 2015	2015 - 2016	2016 - 2017	2017 - 2018	2018 - 2019	2019 - 2020	2020 - 2021	2021 - 2022	2022 - 2023	2023 - 2024
BAKERSFIELD	4	6	7	13	6	4	10	1	4	2	4
CHANNEL ISLANDS	13	18	14	10	15	11	20	13	15	11	12
CHICO	6	7	15	6	15	10	12	8	14	9	14
DOMINGUEZ HILLS	113	116	123	125	122	132	140	132	141	77	111
EAST BAY	7	7	7	6	11	5	11	8	9	11	15
FRESNO	1	6	1	4	2	4	2	2	2	2	2
FULLERTON	21	19	33	35	29	37	32	28	35	42	52
HUMBOLDT	12	19	21	19	19	10	7	14	16	10	12
INTERNATIONAL PROGRAMS	0	0	0	0	2	2	0	0	0	0	0
LONG BEACH	158	187	192	162	167	184	189	200	230	168	208
LOS ANGELES	149	229	146	186	234	188	158	172	217	127	162
MARITIME ACADEMY	0	2	1	1	1	0	1	1	0	0	0
MONTEREY BAY	4	7	4	3	2	6	2	3	5	4	5
NORTHRIDGE	423	434	448	376	387	361	340	408	427	244	336
POMONA	38	40	45	55	43	55	50	54	55	40	45
SACRAMENTO	5	13	5	5	14	9	13	2	6	6	9
SAN BERNARDINO	0	5	6	5	9	5	4	3	6	5	6
SAN DIEGO	16	14	15	13	14	16	22	25	27	26	29
SAN FRANCISCO	21	43	61	36	47	51	48	32	40	22	27
SAN JOSE	18	10	18	12	19	17	15	14	15	7	9
SAN LUIS OBISPO	9	5	0	5	4	9	4	8	9	6	6
SAN MARCOS	1	4	2	1	5	3	3	4	5	4	4
SONOMA	3	3	2	1	3	5	6	1	3	3	3
STANISLAUS	0	1	1	2	2	0	1	0	1	0	0
GRAND TOTAL	1,022	1,195	1,167	1,081	1,172	1,122	1,091	1,133	1,217	1,084	1,071

Source: California State University

**Table 35: SMC to CSU Transfers by Campus**

SMC students transferred to a wide variety of CSU campuses each year. Overall transfers averaged just over 1,100 per year, with the largest numbers consistently to Northridge, Long Beach, Los Angeles, and Dominguez Hills.

SMC TO UC TRANSFERS BY CAMPUS										
YEAR	BERKELEY	DAVIS	IRVINE	LOS ANGELES	MERCED	RIVERSIDE	SAN DIEGO	SANTA BARBARA	SANTA CRUZ	GRAND TOTAL
2000 - 2001	84	12	61	426	-	21	46	39	20	709
2001 - 2002	87	11	103	557	-	38	62	45	35	938
2002 - 2003	109	15	131	447	-	37	70	54	32	895
2003 - 2004	91	15	93	529	-	26	62	62	22	900
2004 - 2005	96	19	107	534	-	35	56	98	29	974
2005 - 2006	100	8	94	515	2	33	79	51	21	903
2006 - 2007	106	12	90	596	3	24	67	62	21	981
2007 - 2008	93	20	81	541	1	35	88	54	22	935
2008 - 2009	91	18	74	516	7	26	110	53	24	919
2009 - 2010	135	30	85	519	8	39	146	78	13	1,053
2010 - 2011	124	33	84	505	9	40	118	63	33	1,009
2011 - 2012	181	45	84	472	7	60	123	67	37	1,076
2012 - 2013	173	59	84	490	2	44	84	82	39	1,057
2013 - 2014	115	81	105	444	4	51	156	72	33	1,061
2014 - 2015	128	61	114	476	0	57	111	87	38	1,074
2015 - 2016	120	70	115	459	3	59	137	100	34	1,097
2016 - 2017	136	74	161	482	0	40	175	90	36	1,194
2017 - 2018	159	55	147	504	3	48	182	161	30	1,289
2018 - 2019	110	55	121	486	0	72	217	151	58	1,270
2019 - 2020	114	45	200	464	8	72	117	123	54	1,197
2020 - 2021	140	49	130	449	3	60	158	142	55	1,186
2021 - 2022	132	54	133	412	6	80	194	119	70	1,200
2022 - 2023	165	44	84	414	0	58	136	133	50	1,086
2023 - 2024	133	41	82	451	0	24	109	100	41	983

Source: California State University

**Table 36: SMC to UC Transfers by Campus**

SMC transfers to the UC system averaged roughly 1,050 students annually, with UCLA consistently the top destination, followed by UC Irvine, UC Berkeley, and UC Santa Barbara.

**Faculty and Staff**

NUMBER OF FACULTY, STAFF, AND ADMINISTRATORS						
	FALL 2019	FALL 2020	FALL 2021	FALL 2022	FALL 2023	CHANGE FROM FALL 2019 TO FALL 2023
<b>Classified</b>	466	439	434	445	471	1%
<b>Confidential</b>	8	8	8	8	6	-25%
<b>Academic Administrators</b>	48	48	45	45	45	-6%
<b>Classified Administrators</b>	52	49	51	53	53	2%
<b>Full-Time Faculty</b>	336	314	309	329	335	-0.30%
<b>Part-Time Faculty</b>	1,000	910	893	859	868	-13%
<b>Total</b>	1,910	1,768	1,740	1,739	1,778	-7%

Source: California Community College Chancellor's Office (CCCCO) DataMart

**Table 37: Number of Faculty, Staff, and Administrators**

Overall, SMC has seen a 7% decrease in the number of all employees in the last four years, with the most significant decrease in part-time faculty members.

FULL-TIME TO PART-TIME FACULTY RATIO						
	FALL 2019 (n=1,336)	FALL 2020 (n=1,224)	FALL 2021 (n=1,202)	FALL 2022 (n=1,188)	FALL 2023 (n=1,203)	CHANGE FROM FALL 2019 TO FALL 2023
<b>Full-Time Faculty</b>	25%	26%	26%	28%	28%	3%
<b>Part-Time Faculty</b>	75%	74%	74%	72%	72%	-3%

Source: California Community College Chancellor's Office (CCCCO) DataMart

**Table 38: Full-time to Part-time Faculty Ratio**

The ratio of part-time faculty to full-time faculty slightly increased to 26% (Fall 2019 to Fall 2021) and then again to 28% (Fall 2021 to Fall 2023).

SMC EMPLOYEE ETHNICITY					
	FALL 2020	FALL 2021	FALL 2022	FALL 2023	FALL 2024
	n=1768	n=1740	n=1739	n=1778	n=1797
<b>Educational Administrator</b>	<b>48</b>	<b>45</b>	<b>45</b>	<b>45</b>	<b>54</b>
African-American	29%	29%	31%	29%	30%
Asian	4%	2%	4%	9%	7%
Hispanic	17%	22%	20%	20%	20%
Multi-Ethnicity	0%	0%	0%	0%	0%
Pacific Islander	2%	2%	2%	2%	2%
Unknown	6%	7%	7%	2%	7%
White Non-Hispanic	42%	38%	36%	38%	33%
<b>Academic, Tenured/Tenure Track</b>	<b>314</b>	<b>309</b>	<b>329</b>	<b>335</b>	<b>334</b>
African-American	11%	11%	11%	12%	12%
Asian	14%	14%	13%	14%	14%
Hispanic	19%	18%	19%	20%	21%
Multi-Ethnicity	1%	1%	2%	2%	2%
Pacific Islander	1%	1%	1%	1%	1%
Unknown	2%	2%	2%	2%	2%
White Non-Hispanic	53%	53%	51%	50%	48%
<b>Academic, Temporary</b>	<b>910</b>	<b>893</b>	<b>859</b>	<b>868</b>	<b>877</b>
African-American	10%	10%	10%	10%	10%
Asian	12%	13%	12%	12%	12%
Hispanic	15%	15%	17%	18%	18%
Multi-Ethnicity	2%	2%	1%	1%	1%
Pacific Islander	0%	1%	1%	1%	1%
Unknown	6%	5%	5%	5%	5%
White Non-Hispanic	54%	55%	55%	54%	53%
<b>Classified</b>	<b>496</b>	<b>493</b>	<b>506</b>	<b>530</b>	<b>532</b>
African-American	22%	21%	21%	20%	19%
Asian	12%	12%	12%	11%	11%
Hispanic	31%	31%	32%	33%	33%
Multi-Ethnicity	1%	1%	1%	2%	2%
Unknown	6%	6%	7%	10%	11%
White Non-Hispanic	28%	29%	27%	25%	23%

Source: California Community College Chancellor's Office (CCCCO) DataMart

**Table 39: SMC Employee Ethnicity**

Classified staff and administration are more diverse than the faculty (both tenured/tenure track and temporary academic). African-American and Hispanic representation among administrative and faculty personnel has increased; however, Asian representation increased and then slightly decreased. The ethnic make-up among the tenured/tenured track and temporary faculty rank has not changed much in the last four years. However, the white population for tenured/tenure track academic ranks has dropped five percentage points. Hispanic representation in all ranks has increased by two to three percentage points, and the White population in the administrative ranks has decreased nine percentage points.

SMC EMPLOYEE GENDER					
	FALL 2020	FALL 2021	FALL 2022	FALL 2023	FALL 2024
	n=1768	n=1740	n=1739	n=1778	n=1797
<b>Educational Administrator</b>	<b>48</b>	<b>45</b>	<b>45</b>	<b>45</b>	<b>54</b>
Female	71%	62%	67%	64%	67%
Male	29%	38%	33%	36%	33%
<b>Academic, Tenured/Tenure Track</b>	<b>314</b>	<b>309</b>	<b>329</b>	<b>335</b>	<b>334</b>
Female	57%	57%	57%	57%	59%
Male	43%	43%	43%	43%	41%
<b>Academic, Temporary</b>	<b>910</b>	<b>893</b>	<b>859</b>	<b>868</b>	<b>877</b>
Female	58%	57%	57%	58%	58%
Male	42%	43%	43%	42%	42%
<b>Classified</b>	<b>496</b>	<b>493</b>	<b>506</b>	<b>530</b>	<b>532</b>
Female	50%	49%	49%	50%	51%
Male	50%	51%	51%	50%	49%

Source: California Community College Chancellor's Office (CCCCO) DataMart

**Table 40: SMC Employee Gender**

The gender distribution among administration ranks has slightly shifted. Male representation has increased by four percentage points; however, female representation remains the majority. There are more females than males among teaching faculty. Female representation among the tenured/tenure track academic ranks has increased by 2 percentage points. The temporary academic — or part-time faculty — gender balance has remained the same for the last four years. Among classified staff members, the gender distribution is nearly equal with 51% females and 49% males.

SMC EMPLOYEE AGE					
	FALL 2020	FALL 2021	FALL 2022	FALL 2023	FALL 2024
	n=1768	n=1740	n=1739	n=1778	n=1797
<b>Educational Administrator</b>	<b>48</b>	<b>45</b>	<b>45</b>	<b>45</b>	<b>54</b>
18 to 34	11%	4%	7%	9%	9%
35 to 39	8%	11%	9%	7%	11%
40 to 49	29%	40%	33%	31%	30%
50 to 59	27%	27%	33%	33%	33%
60 to 69	17%	11%	11%	13%	11%
70+	8%	7%	7%	7%	6%
<b>Academic, Tenured/Tenure Track</b>	<b>314</b>	<b>309</b>	<b>329</b>	<b>335</b>	<b>334</b>
18 to 34	5%	3%	5%	6%	5%
35 to 39	16%	14%	13%	11%	9%
40 to 49	31%	30%	31%	32%	35%
50 to 59	29%	32%	31%	29%	30%
60 to 69	16%	17%	16%	17%	17%
70+	3%	4%	4%	5%	4%
<b>Academic, Temporary</b>	<b>910</b>	<b>893</b>	<b>859</b>	<b>868</b>	<b>877</b>
18 to 34	18 to 34	18 to 34	18 to 34	18 to 34	18 to 34
35 to 39	35 to 39	35 to 39	35 to 39	35 to 39	35 to 39
40 to 49	40 to 49	40 to 49	40 to 49	40 to 49	40 to 49
50 to 59	50 to 59	50 to 59	50 to 59	50 to 59	50 to 59
60 to 69	60 to 69	60 to 69	60 to 69	60 to 69	60 to 69
70+	70+	70+	70+	70+	70+
<b>Classified</b>	<b>496</b>	<b>493</b>	<b>506</b>	<b>530</b>	<b>532</b>
18 to 34	19%	15%	15%	15%	15%
35 to 39	15%	14%	14%	15%	13%
40 to 49	24%	25%	25%	25%	25%
50 to 59	30%	31%	29%	28%	28%
60 to 69	11%	13%	15%	15%	16%
70+	1%	2%	2%	2%	3%

Source: California Community College Chancellor's Office (CCCCO) DataMart

**Table 41: SMC Employee Age**

Across all categories, employees aged 40-59 make up the largest proportion of the workforce, reflecting a mature employee base. Temporary Academic Faculty and Classified Staff have a more noticeable presence of younger employees aged 18-34, while employees aged 60 and older represent a significant portion of the Temporary Academic and Educational Administrator groups.

**Fiscal Outlook**

SMC ANNUAL OPERATING EXCESS/DEFICIENCY					
	19-20	20-21	21-22	22-23	23-24
Revenue and Transfers	\$185,854,046	\$196,437,675	\$202,277,845	\$204,862,920	\$219,661,783
Expenditures and Transfers	\$195,191,064	\$182,293,014	\$193,846,987	\$214,755,015	\$226,530,335
Annual Operating Excess/Deficiency	(\$9,337,018)	\$14,144,661	\$8,430,858	(\$9,892,095)	(\$6,868,552)

Source: SMC Fiscal Services

**Table 42a: SMC Annual Operating Excess/Deficiency**

Santa Monica College moved from an operating deficit in 2019-20 to surpluses in 2020-21 and 2021-22, but negative balances returned in 2022-23 and 2023-24. Overall, while revenues grew over the last five years, expenditures have outpaced them in three of the five years shown.

SMC FUND BALANCE					
	19-20	20-21	21-22	22-23	23-24
Expenditure and Transfers	\$195,191,064	\$182,293,014	\$193,846,987	\$214,755,015	\$226,530,335
Unrestricted General Fund Balance	\$21,339,089	\$35,483,750	\$43,914,608	\$34,022,513	\$27,153,961
Fund Balance Ratio	10.93%	19.47%	22.65%	15.84%	11.99%

Source: SMC Fiscal Services

**Table 42b: SMC Fund Balance**

Although the college's fund balance peaked at a robust 22.65% in 21-22, it has since declined for two consecutive years.

SMC SALARIES AND BENEFITS					
	19-20	20-21	21-22	22-23	23-24
<b>Salaries and Benefits</b>	\$175,912,756	\$168,070,868	\$177,126,705	\$195,506,711	\$206,584,117
<b>Total Expenditures and Transfers</b>	\$195,191,064	\$182,293,014	\$193,846,987	\$214,755,015	\$226,530,335
<b>Salaries and Benefits Percentage</b>	90.12%	92.20%	91.37%	91.04%	91.19%

Source: SMC Fiscal Services

**Table 43: SMC Salaries and Benefits**

The ratio of unrestricted general funds applied towards salaries and benefits has remained between 92.2% and 90.12% for the last five years. This rate is somewhat higher than the ratio of around 89% common for SMC in the years between 2010 and 2019.

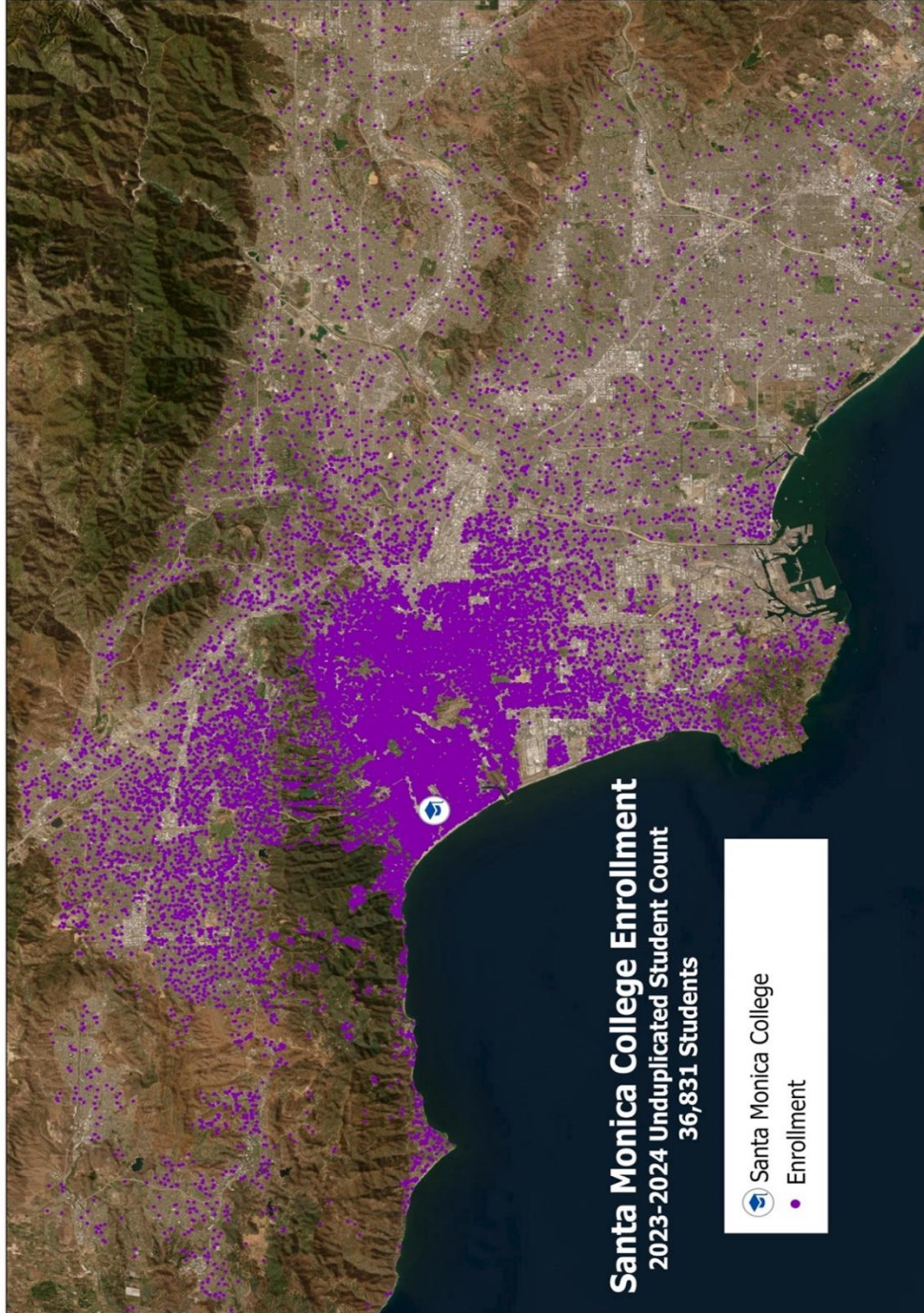
NONRESIDENT TUITION REVENUE					
	19-20	20-21	21-22	22-23	23-24
<b>Nonresident Revenue</b>	\$28,571,375	\$23,987,221	\$21,657,241	\$22,922,455	\$25,304,446
<b>Total Revenue and Transfers</b>	\$185,854,046	\$196,437,675	\$202,277,845	\$204,862,920	\$219,661,783
<b>% Nonresident to Total Revenue</b>	15.37%	12.21%	10.71%	11.19%	11.52%

Source: SMC Fiscal Services

**Table 44: Nonresident Tuition Revenue**

The data shows that nonresident revenue at Santa Monica College declined significantly from \$28.6 million in 2019-20 to a low of \$21.7 million in 2021-22 but has since rebounded to \$25.3 million in 2023-24. As a percentage of total revenue, nonresident revenue has decreased from 15.37% in 2019-20 to a more stable range of around 11-12% in recent years, indicating a relative decline in dependence on nonresident tuition despite overall revenue growth.

External Scan



**Figure 45: SMC Enrollment Map**

The map shows a wide distribution of students from across the Los Angeles region, confirming that SMC attracts students from a broad area well beyond its service district in the Santa Monica and Malibu zip codes. The heavy concentration of students in the Santa Monica and West Los Angeles areas means SMC's "Any line, any time" program, now a citywide phenomenon, continues to be important to our students navigating the city.

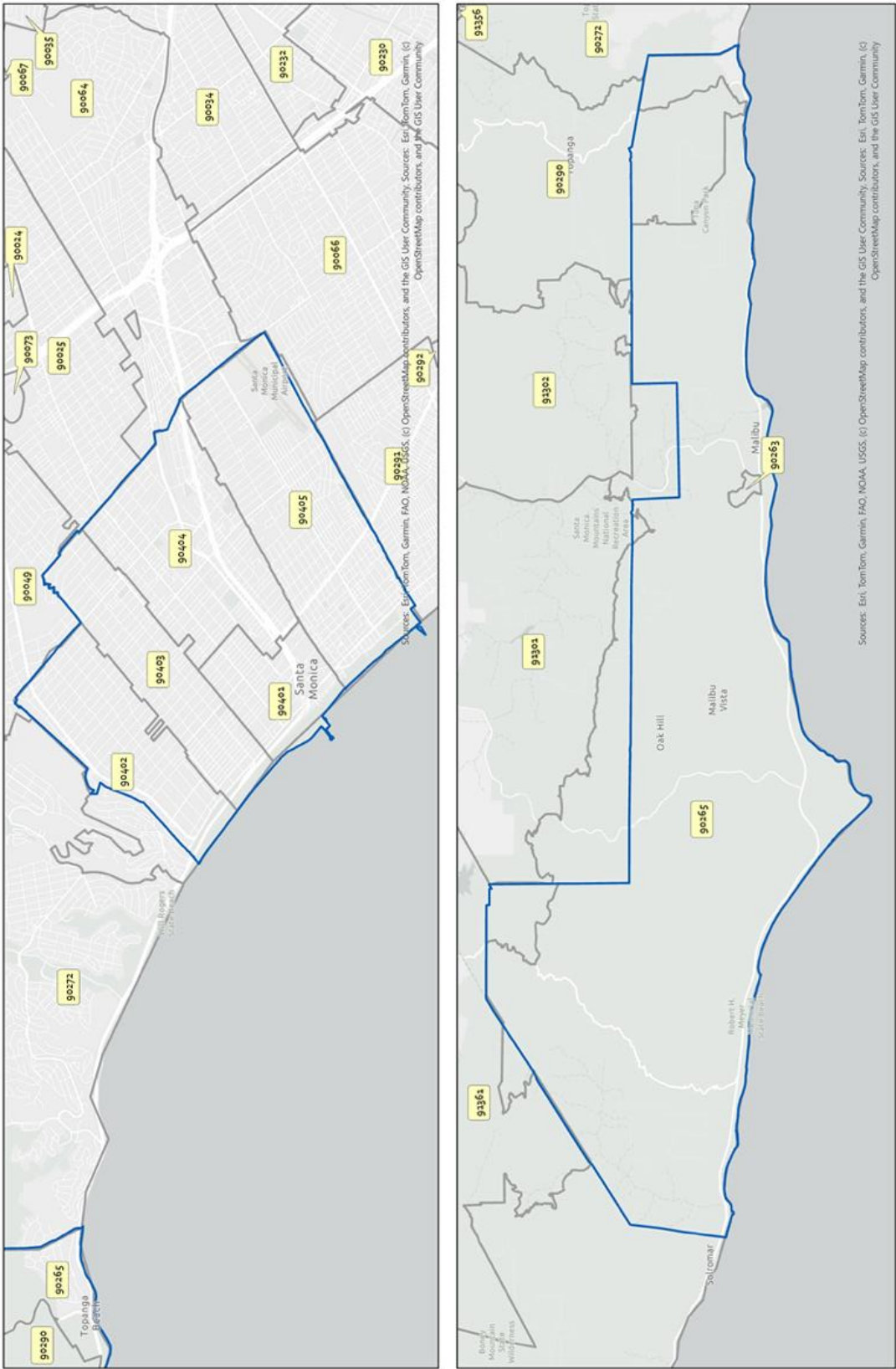
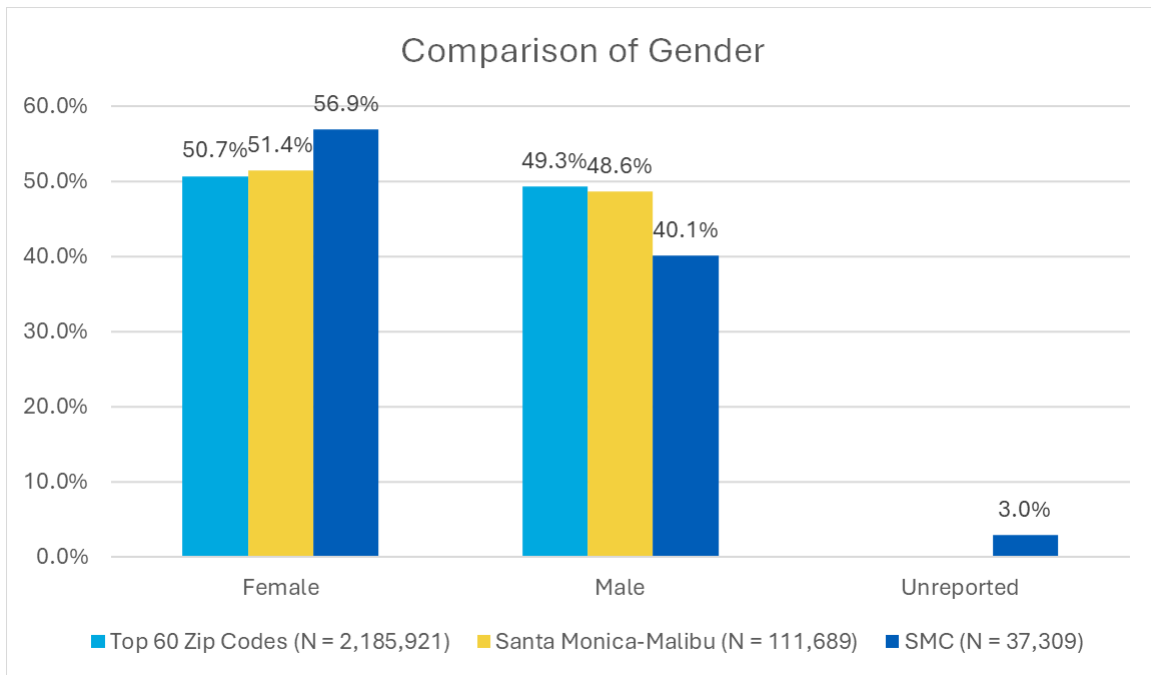


Figure 46: SMC Service Area Zip Codes

The maps above show the zip codes corresponding to Santa Monica College’s designated service area. A comparison of this map with the previous one shows that SMC serves many students from outside of its designated service area.

### COMPARISON OF SERVICE AREA VS. SANTA MONICA COMMUNITY COLLEGE DISTRICT STUDENT POPULATION



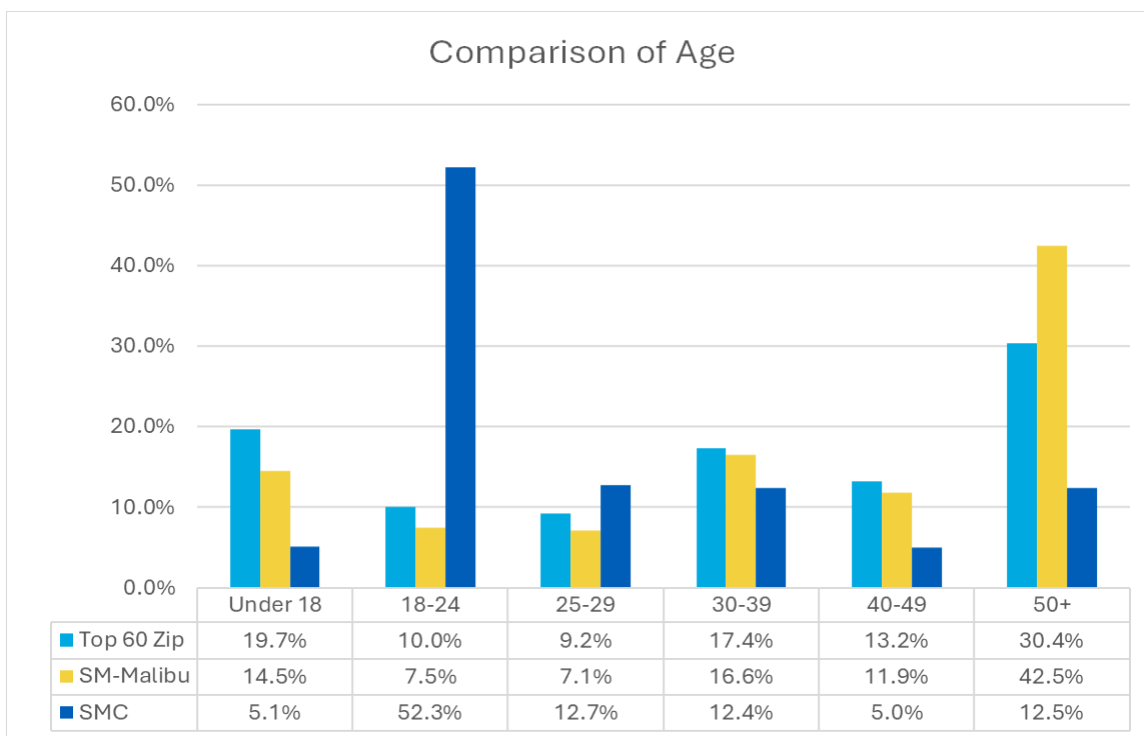
GENDER	TOP 60 ZIP CODES (2022)	SANTA MONICA-MALIBU AREA (2022)	SANTA MONICA COLLEGE POPULATION (2022-2023)
Female	1,107,272	57,401	21,230
	50.7%	51.4%	56.9%
Male	1,078,649	54,288	14,958
	49.3%	48.6%	40.1%
Unreported	--	--	1,121
	--	--	3.0%
Total	2,185,921	111,689	37,309
	100%	100%	100%

Source: US Census Bureau

**Table 47: SMC and Service Area Population by Gender**

This chart and table compare gender representation in the top 60 ZIP codes within Santa Monica College's service area, the broader Santa Monica-Malibu area, and the SMC student population for the 2022-2023 academic year. While the gender distribution in the local population is nearly equal, the college enrolls a significantly higher proportion of female students (56.9%) and a notably lower proportion of male students (40.1%), with 3.0% of students not reporting gender. This disparity underscores the importance of understanding and addressing gender-based enrollment trends in institutional planning.

### COMPARISON OF SERVICE AREA VS. SANTA MONICA COMMUNITY COLLEGE DISTRICT STUDENT POPULATION



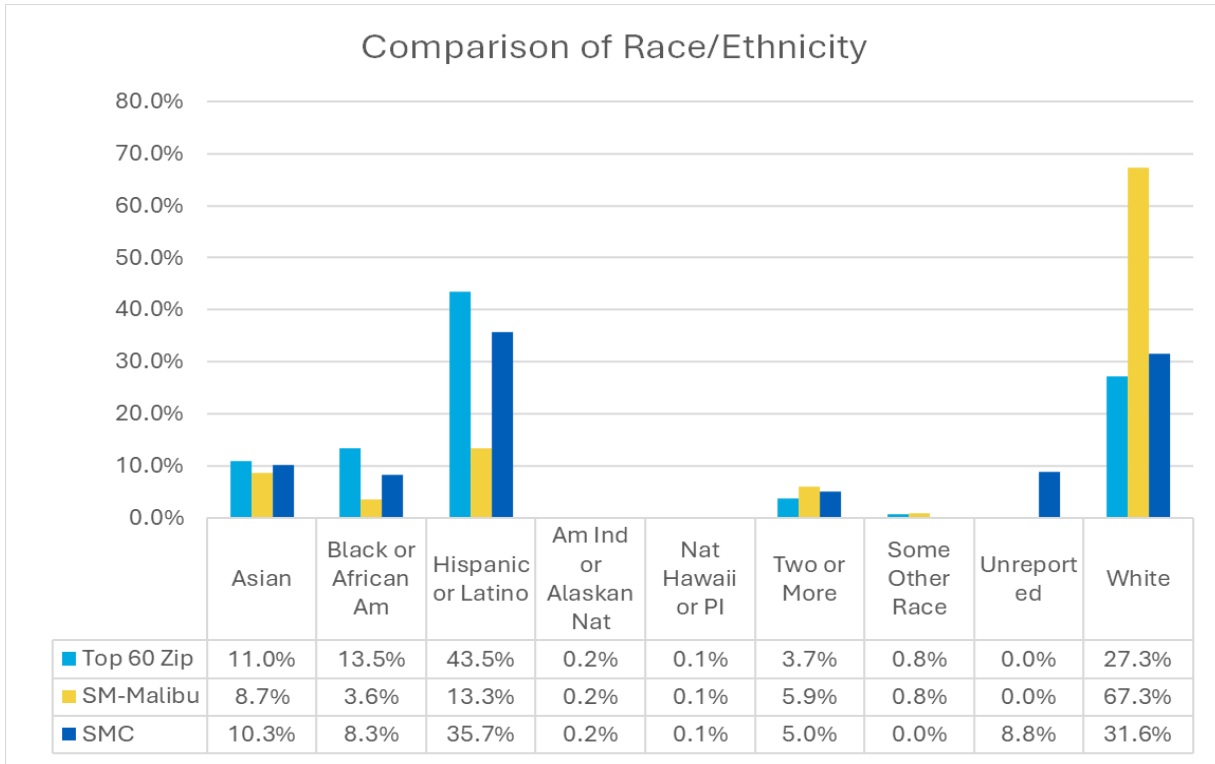
Source: US Census Bureau

**Table 48: SMC and Service Area Population by Age**

While individuals aged 18-24 make up just 7.5-10% of the local population, they represent a majority (52.3%) of SMC's enrollment. Conversely, older adults aged 50 and above constitute over 30% of the surrounding population, but only 12.5% of SMC students. These contrasts highlight SMC's strong appeal to traditional college-age students and suggest opportunities to expand engagement with older adult learners.

AGE GROUP	TOP 60 ZIP CODES (2022)	SANTA MONICA-MALIBU AREA (2022)	SANTA MONICA COLLEGE POPULATION (2022-2023)
Under 18	429,840	16,226	1,913
	19.7%	14.5%	5.1%
18-24	218,944	8,374	19,505
	10.0%	7.5%	52.3%
25-29	201,524	7,914	4,755
	9.2%	7.1%	12.7%
30-39	379,722	18,503	4,619
	17.4%	16.6%	12.4%
40-49	288,900	13,254	1,869
	13.2%	11.9%	5.0%
50+	664,667	47,418	4,648
	30.4%	42.5%	12.5%
Total	2,185,921	111,689	37,309
	100%	100%	100%

**COMPARISON OF SERVICE AREA VS.  
SANTA MONICA COMMUNITY COLLEGE DISTRICT STUDENT POPULATION**



Source: US Census Bureau

**Table 49: SMC and Service Area Population by Race/Ethnicity**

While White individuals constitute over two-thirds of the local population (67.3%), they represent only 31.6% of SMC students. In contrast, Hispanic/Latino students are significantly overrepresented at SMC (35.7%) compared to their share of the local population (13.3%). Black or African American students also exceed their local representation, comprising 8.3% of the student body versus 3.6% of the regional population.

RACE/ETHNICITY	TOP 60 ZIP CODES (2020)	SANTA MONICA-MALIBU AREA (2020)	SMC STUDENTS (2022-2023)
Asian	244,331	9,821	3,827
	11.0%	8.7%	10.3%
Black or African American	299,206	4,050	3,103
	13.5%	3.6%	8.3%
Hispanic or Latino	967,053	15,052	13,307
	43.5%	13.3%	35.7%
American Indian or Native Alaskan	3,519	219	56
	0.2%	0.2%	0.2%
Native Hawaiian or Pacific Islander	2,941	129	54
	0.1%	0.1%	0.1%
Two or More Races	81,927	6,687	1,868
	3.7%	5.9%	5.0%
Some Other Race	16,913	936	--
	0.8%	0.8%	--
Unreported	--	--	3,299
	--	--	8.8%
White	605,647	75,965	11,795
	27.3%	67.3%	31.6%

FIRST-TIME STUDENTS HIGH SCHOOL ATTENDED								
HIGH SCHOOL	FALL 2017	FALL 2018	FALL 2019	FALL 2020	FALL 2021	FALL 2022	FALL 2023	FALL 2024
Santa Monica High	260	237	269	182	199	222	182	210
Culver City High	139	158	188	171	137	134	164	181
Beverly Hills High	154	167	183	141	137	147	141	140
Venice Senior High	123	142	138	101	111	139	141	121
Alexander Hamilton Senior High	144	161	167	161	122	164	176	116
Fairfax Senior High	88	109	97	90	85	84	94	91
University High School Charter	101	116	118	84	56	83	43	68
Calabasas High	30	29	35	36	21	30	44	45
El Segundo High	34	36	25	42	34	34	42	44
Los Angeles Senior High	32	66	56	50	33	59	21	39
Hollywood Senior High	39	51	74	88	53	48	34	38
John Marshall Senior High	32	23	43	29	18	34	31	32
Mira Costa High	82	72	62	76	62	44	30	30
Susan Miller Dorsey Senior High	21	22	21	17	18	25	19	29
Los Angeles Center for Enriched Studies	27	34	31	33	24	42	33	28
El Camino Real Charter High	41	23	22	26	32	27	22	24
Granada Hills Charter	23	23	17	24	32	30	30	22
Santee Education Complex	16	24	58	37	19	12	31	21
West Adams Preparatory High	29	39	42	39	18	28	9	20
Theodore Roosevelt Senior High	3	5	2	3	1	3	8	20
Foshay Learning Center	32	19	45	32	22	28	9	19
Francisco Bravo Medical Magnet High	35	23	14	30	18	17	24	18
John C. Fremont Senior High	25	10	20	34	16	9	8	17
Redondo High	13		5	1	9	13	5	16
Redondo Union High	13		5	1	9	13	5	16
Inglewood High	25	23	26	24	10	8	21	15
Hawthorne High	24	18	18	8	11	14	12	15
Malibu High	27	18	25	26	24	18	13	15
Manual Arts Senior High	17	34	62	20	20	26	30	14
Birmingham Community Charter High	25	18	22	26	35	8	16	14
Animo Venice Charter High	27	52	39	40	37	29	17	14
WESM Health/Sports Medicine	20	27	20	3	7	8	8	13
King/Drew Medical Magnet High	3	15	21	22	11	17	16	13
Olympic High (Continuation)	15	8	21	6	6	9	7	12
School of Business and Tourism at Contreras Learning Complex	12	7	14	5	7	15	15	11
Bell Senior High	7	9	4	10	8	10	5	11
New Open World Academy K-12	10	5	11	7	7	1	17	11

Lawndale High	27	16	28	40	14	9	10	10
Taft Charter High	15	14	22	19	19	10	20	9
Agoura High	17	17	24	17	16	10	8	9
Leuzinger High	13	4	10	5	14	5	10	9
Ulysses S. Grant Senior High	5	5	2	9	2	7	7	9
Crenshaw Science, Technology, Engineering, Math and Medicine Magnet	19	12	9	4	6	5	2	8
Abraham Lincoln Senior High	1		2	2	1	1	2	8
Huntington Park Senior High	10	19	6	6	2	4	18	7
North Hollywood Senior High	10	23	23	27	23	20	16	7
Grover Cleveland Charter High	21	15	8	28	8	10	7	7
John F. Kennedy High	8	1	3	10	6	17	5	7
Warren (Earl) High	7	7	1	5		2	4	7
Burbank High	9	7	6	6	11	5	7	7
<b>Grand Total</b>	<b>1,910</b>	<b>1,963</b>	<b>2,164</b>	<b>1,903</b>	<b>1,591</b>	<b>1,737</b>	<b>1,639</b>	<b>1,667</b>

Source: SMC Institutional Research

**Table 50: First-time Students High School Attended**

This data represents the top 50 high schools based on the fall 2024 semester sorted from highest to lowest attendees. Note that roughly half of all incoming SMC students report their high school attended.

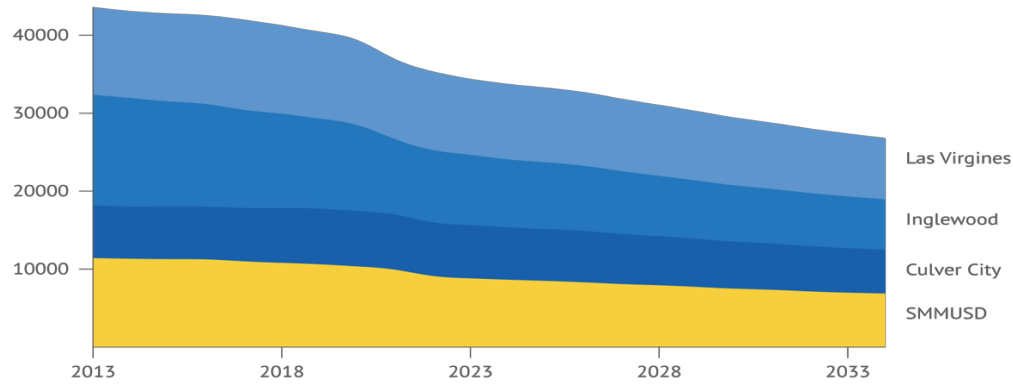
SPECIAL ADMIT STUDENTS HIGH SCHOOL ATTENDED								
HIGH SCHOOL	FALL 2017	FALL 2018	FALL 2019	FALL 2020	FALL 2021	FALL 2022	FALL 2023	FALL 2024
Santa Monica High	239	194	247	289	158	192	243	191
Beverly Hills High	51	110	89	123	77	77	81	87
Malibu High	53	52	41	39	50	42	38	42
Olympic High (Continuation)			1				12	19
Culver City High	46	3	41	64	48	40	12	12
Venice Senior High	46	16	2	1	9	2	3	4
Calabasas High	1				5	2	3	4
Alexander Hamilton Senior High	8	11	4	12	5		1	2
Mira Costa High		2	4	4	4	4	8	2
El Camino Real Charter High			1	1			1	2
Palos Verdes High				1			2	2
Leuzinger High								1
Granada Hills Charter		2	1		1	2	1	1
El Segundo High	3	4		2	1	1		1
North Hollywood Senior High			1	2		1	1	1
Van Nuys Senior High			1					1
South High					1		2	1
Burbank High							1	1
California Academy of Math and Science	1						1	1
La Canada High					1			1
Palos Verdes Peninsula High					1		1	1
South Pasadena Senior High		1			1			1
Crescenta Valley High							1	1
Arcadia High							1	1
Downey High							1	1
Saugus High								1
Animo Inglewood Charter High								1
<b>Grand Total</b>	<b>448</b>	<b>395</b>	<b>433</b>	<b>538</b>	<b>362</b>	<b>363</b>	<b>414</b>	<b>383</b>

Source: SMC Institutional Research

**Table 51: Special Admit Students High School Attended**

This list represents the top 27 high schools based on fall 2024 attendance of special admit students sorted from highest to lowest. “Special admit” refers to a student who enrolls at SMC while still enrolled in high school.

## PROJECTED HIGH SCHOOL ENROLLMENT BY DISTRICT 2013-2034

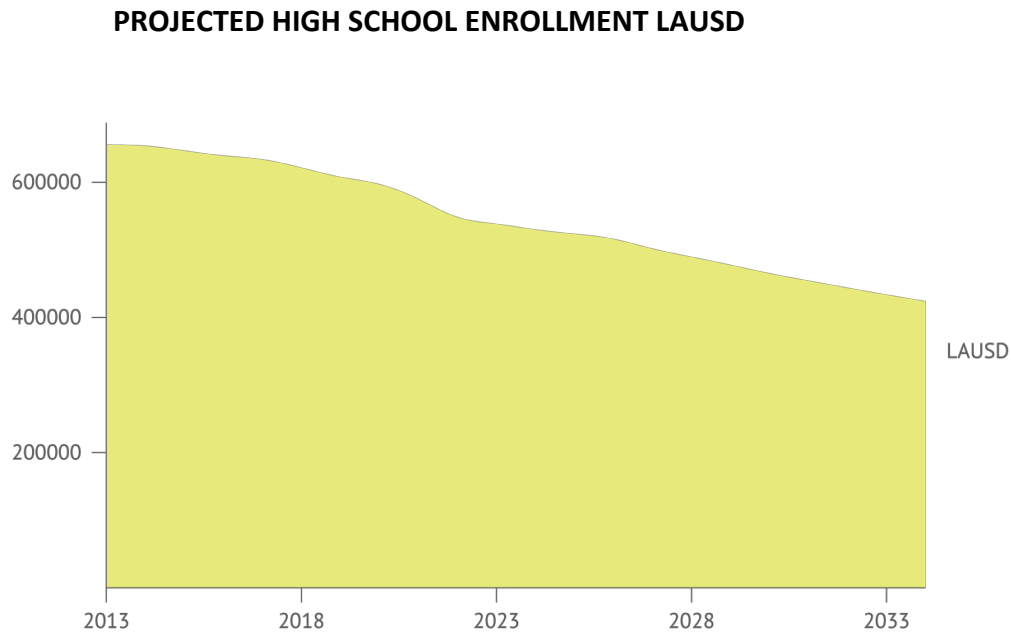


Source: California Department of Finance

**Table 52: Projected High School Enrollment by District**

Key feeder high school enrollments are projected to decline by roughly 23.7% over the next nine years.

YEAR	SMMUSD	CULVER CITY UNIFIED	INGLEWOOD UNIFIED	LAS VIRGENES UNIFIED
2013	11,417	6,741	14,208	11,236
2014	11,341	6,691	13,915	11,137
2015	11,289	6,757	13,469	11,259
2016	11,249	6,763	13,162	11,374
2017	11,005	6,856	12,570	11,547
2018	10,806	7,048	12,086	11,323
2019	10,625	7,144	11,542	11,138
2020	10,350	7,106	11,026	10,886
2021	9,929	7,076	9,683	10,248
2022	9,129	6,876	9,279	10,064
2023	8,820	6,826	9,011	9,732
2024	8,641	6,717	8,724	9,660
2025	8,492	6,641	8,574	9,547
2026	8,315	6,577	8,373	9,424
2027	8,094	6,422	8,061	9,263
2028	7,929	6,291	7,747	9,079
2029	7,719	6,163	7,478	8,886
2030	7,500	6,026	7,220	8,678
2031	7,350	5,923	7,002	8,476
2032	7,142	5,803	6,816	8,251
2033	6,982	5,707	6,642	8,045
2034	6,870	5,608	6,477	7,843



Source: California Department of Finance

**Table 53: Projected High School Enrollment LAUSD**

LAUSD high school enrollment is projected to decline by roughly 100,000 students, or 19.1%, from 2025 to 2034.

FIFTY TOP JOBS IN LOS ANGELES COUNTY							
OCCUPATION	2022 JOBS	2022-2027 % CHANGE	AVERAGE ANNUAL OPENINGS	PCT. 25 HOURLY EARNINGS	MEDIAN ANNUAL EARNINGS	PCT. 75 HOURLY EARNINGS	TYPICAL ENTRY LEVEL EDUCATION
Industrial Machinery Mechanics	5,891	6%	542	\$23.46	\$61,800	\$37.44	HS diploma
Bus and Truck Mechanics and Diesel Engine Specialists	5,307	6%	512	\$23.53	\$63,300	\$37.01	HS diploma
Cost Estimators	6,125	0%	508	\$27.63	\$75,900	\$47.98	Bachelor's degree
Aircraft Mechanics and Service Technicians	5,253	10%	503	\$29.20	\$77,000	\$43.91	Postsecondary nondegree award
Audio and Video Technicians	5,162	1%	501	\$22.59	\$68,600	\$50.80	Postsecondary nondegree award
Sound Engineering Technicians	4,700	3%	488	\$21.96	\$66,300	\$59.89	Postsecondary nondegree award
Physical Therapist Assistants	2,293	24%	450	\$32.55	\$80,400	\$42.59	Associate degree
Network and Computer Systems Administrators	7,206	1%	428	\$36.48	\$98,600	\$61.55	Bachelor's degree
Correctional Officers and Jailers	3,957	5%	392	\$30.36	\$73,700	\$39.43	HS diploma
Construction and Building Inspectors	3,176	3%	379	\$28.19	\$82,100	\$50.75	HS diploma
Biologic Technologists and Technicians	4,964	7%	333	\$31.14	\$87,600	\$51.16	Associate degree
Legal Support Workers, All Other	2,845	3%	322	\$22.01	\$63,400	\$46.62	Associate degree
Respiratory Therapists	4,120	11%	300	\$38.16	\$85,700	\$50.89	Associate degree
Mobile Heavy Equipment Mechanics, Except Engines	2,885	7%	283	\$25.83	\$63,000	\$35.80	HS diploma

Source: Center of Excellence using Lightcast, datarun 2024.1

**Table 54: Fifty Top Jobs in Los Angeles County (list continues on next two pages)**

This table identifies the *50 priority occupations in Los Angeles County* as determined by the Centers of Excellence for Labor Market Research. These occupations were selected based on high regional demand, projected job growth, and alignment with middle- and high-skill wage thresholds. The list serves as a guide for community colleges to align academic and career education programs with the region's labor market needs. The table is meant to help colleges identify curriculum development, program expansion, and partnerships that prepare students for the most promising employment opportunities in the coming decade.

FIFTY TOP JOBS IN LOS ANGELES COUNTY (cont.)							
OCCUPATION	2022 JOBS	2022-2027 % CHANGE	AVERAGE ANNUAL OPENINGS	PCT. 25 HOURLY EARNINGS	MEDIAN ANNUAL EARNINGS	PCT. 75 HOURLY EARNINGS	TYPICAL ENTRY LEVEL EDUCATION
Makeup Artists, Theatrical and Performance	1,533	1%	272	\$42.87	\$99,000	\$54.97	Postsecondary nondegree award
Architectural and Civil Drafters	2,786	1%	267	\$24.73	\$60,900	\$35.79	Associate degree
Lighting Technicians	2,692	(1%)	262	\$26.36	\$82,200	\$64.58	HS diploma
Commercial Pilots	1,816	11%	254	\$43.57	\$135,800	\$111.32	HS diploma
First-Line Supervisors of Police and Detectives	3,049	6%	241	\$66.08	\$167,000	\$82.15	HS diploma
Captains, Mates, and Pilots of Water Vessels	2,182	1%	240	\$38.49	\$104,200	\$51.49	Postsecondary nondegree award
Occupational Therapy Assistants	1,165	23%	230	\$32.78	\$78,500	\$39.43	Associate degree
Surgical Technologists	2,910	7%	218	\$29.32	\$66,800	\$40.17	Postsecondary nondegree award
Compensation, Benefits, and Job Analysis Specialists	2,856	3%	217	\$29.25	\$75,400	\$48.45	Bachelor's degree
Registered Nurses	89,734	7%	6,247	\$49.83	\$129,500	\$69.31	Bachelor's degree
First-Line Supervisors of Office and Administrative Support Workers	44,972	(1%)	4,285	\$27.42	\$66,300	\$38.87	HS diploma
Sales Representatives of Services, Except Advertising, Insurance, Financial Services, and Travel	29,907	3%	3,024	\$22.31	\$64,700	\$46.41	HS diploma
Licensed Vocational Nurses	22,645	11%	2,284	\$29.00	\$64,100	\$36.11	Postsecondary nondegree award
Police and Sheriff's Patrol Officers	22,021	5%	1,941	\$42.46	\$105,900	\$60.56	HS diploma
Real Estate Sales Agents	18,130	5%	1,722	\$17.38	\$64,900	\$56.73	HS diploma
Special Effects Artists and Animators	15,136	2%	1,702	\$36.65	\$122,000	\$77.10	Bachelor's degree
Paralegals and Legal Assistants	13,232	10%	1,666	\$29.14	\$72,900	\$46.15	Associate degree
Insurance Sales Agents	18,770	3%	1,651	\$22.32	\$65,700	\$49.13	HS diploma
Electricians	15,774	6%	1,582	\$22.81	\$68,700	\$45.00	HS diploma
Property, Real Estate, and Community Association Managers	17,769	1%	1,498	\$19.71	\$63,100	\$49.00	HS diploma
Flight Attendants	8,715	12%	1,404	\$26.06	\$68,500	\$39.95	HS diploma

FIFTY TOP JOBS IN LOS ANGELES COUNTY (cont.)							
OCCUPATION	2022 JOBS	2022-2027 % CHANGE	AVERAGE ANNUAL OPENINGS	PCT. 25 HOURLY EARNINGS	MEDIAN ANNUAL EARNINGS	PCT. 75 HOURLY EARNINGS	TYPICAL ENTRY LEVEL EDUCATION
First-Line Supervisors of Construction Trades and Extraction Workers	15,227	3%	1,345	\$28.93	\$78,100	\$54.17	HS diploma
Computer User Support Specialists	17,315	2%	1,246	\$25.69	\$66,100	\$39.09	Some college, no degree
Construction Managers	15,020	6%	1,245	\$21.87	\$86,400	\$61.70	Bachelor's degree
Computer Occupations, All Other	17,532	3%	1,214	\$29.18	\$94,600	\$64.79	Bachelor's degree
Film and Video Editors	11,600	3%	1,168	\$23.72	\$70,000	\$57.41	Bachelor's degree
First-Line Supervisors of Mechanics, Installers, and Repairers	10,558	5%	988	\$29.71	\$79,800	\$48.93	HS diploma
Training and Development Specialists	8,851	7%	876	\$23.99	\$69,400	\$45.08	Bachelor's degree
Chefs and Head Cooks	5,803	11%	844	\$22.28	\$63,400	\$39.72	HS diploma
Real Estate Brokers	8,466	5%	800	\$24.45	\$74,000	\$71.24	HS diploma
Transportation, Storage, and Distribution Managers	8,901	2%	748	\$34.67	\$99,900	\$64.81	HS diploma
Logisticians	6,829	9%	682	\$30.33	\$79,700	\$49.55	Bachelor's degree
Operating Engineers and Other Construction Equipment Operators	5,847	7%	584	\$27.89	\$78,400	\$50.23	HS diploma
Dental Hygienists	6,800	8%	569	\$49.16	\$106,100	\$59.15	Associate degree
Firefighters	5,999	7%	547	\$33.40	\$82,400	\$57.41	Postsecondary nondegree award