



Figure 1 – Original main campus design (*The Corsair*, October 18, 1950).



Figure 2 – Aerial photograph of main campus, circa 1962.

FOUNDING MASTER PLAN

The original main campus design dates from the late 1940s, conceived of as a community park. The design is attributed to Bill Evans, who gained prominence in the landscaping industry for his later work in the planning of Disneyland. Much of the original design was realized, though not the business and administrative wing (4) or the auditorium (8). A version of the recital hall (11) was built in 1979, using Federal funds. Three bond measures, in 1946, 1950, and 1957, funded the improvements as shown in this 1962 aerial photograph. The vocational trades were not included in the planned campus, as these were taught at the “North Campus” on the site of what is now Virginia Avenue Park.



Figure 3 – Aerial photograph of main campus, circa 1983.

CAMPUS ADDITIONS

Subsequent changes to the main campus occurred on an individual basis. The Board of Education sold the North Campus and moved the vocational programs to what is now Drescher Hall in the late 1960s. The student amphitheater also dates from the late 1960s. The Concert Hall (a version of the planned recital hall) was added in the late 1970s. The Library with its outdoor garden, the Business building, and a small parking structure (now gone) were added in the early 1980s. Funding for these came from a 1966 bond, from state grants, from Federal funds, from reserves, and from the Associated Students. Note that Miller Drive, the roadway that cut through the campus, is now gone. Various temporary buildings began to appear, including the ESL building and the former PE annex building. This aerial photo was taken in the early 1980s.

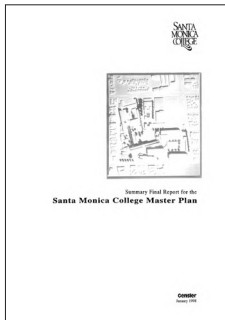


Figure 4 –1998 SMC Facility Master Plan.

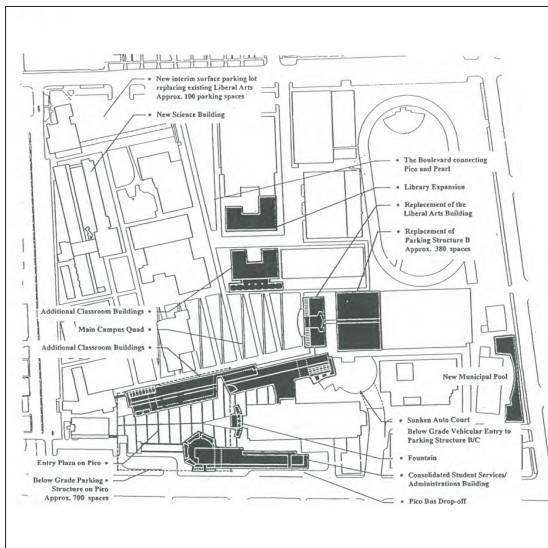


Figure 5 – Illustrative concept for main campus from 1998.



Figure 6 – Aerial photograph of main campus, 2007.

1998 MASTER PLAN

The introduction of preferential parking in 1988 led to the construction of two new on-campus parking structures that opened in 1991, one on a surface parking lot and the other on an athletic field. The damage from the 1994 Northridge earthquake resulted in immediate losses of the Science Building and the older parking structure. Severe damage to the remaining facilities led to other displacements. As a result, many temporary facilities and “villages” were constructed. At this time also, the City of Santa Monica had received funding to upgrade the Municipal Pool to an Olympic competition configuration and add a family pool. The 1998 Master Plan reestablished a system of planning principles that would give coherence to the campus and guide the District through multiple projects. Key projects realized included the new pool complex, an addition to the larger parking structure with a new pedestrian bridge and entryway, the new Science building, the Library expansion, the new Humanities and Social Sciences building complex, the new Theatre Arts building, and the new campus quad. The plan also identified sites for a new student services building and a new underground parking structure. The 2007 photo shows the finished buildings. Funding was from FEMA, state funds, a 1992 bond, redevelopment, and student parking fees.

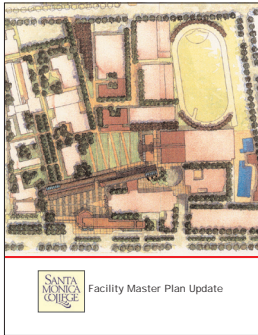


Figure 7 – 2002 SMC Facility Master Plan Update.

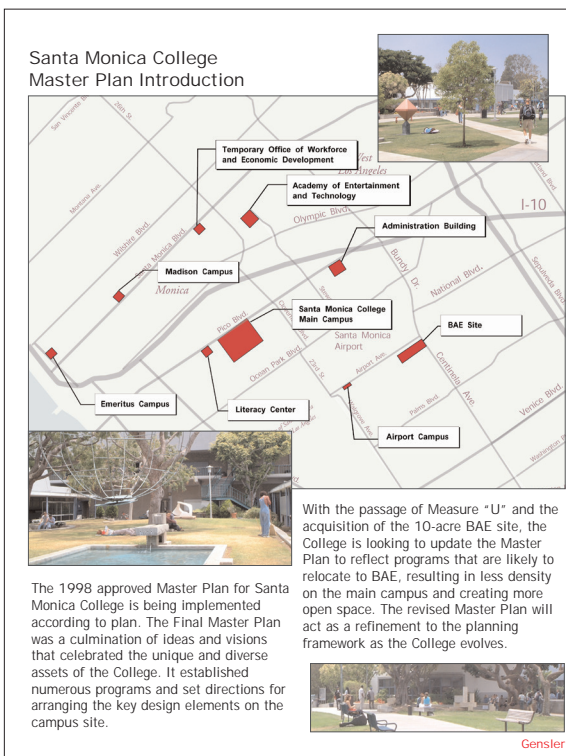


Figure 8 – Map of SMC instructional sites as of 2002.

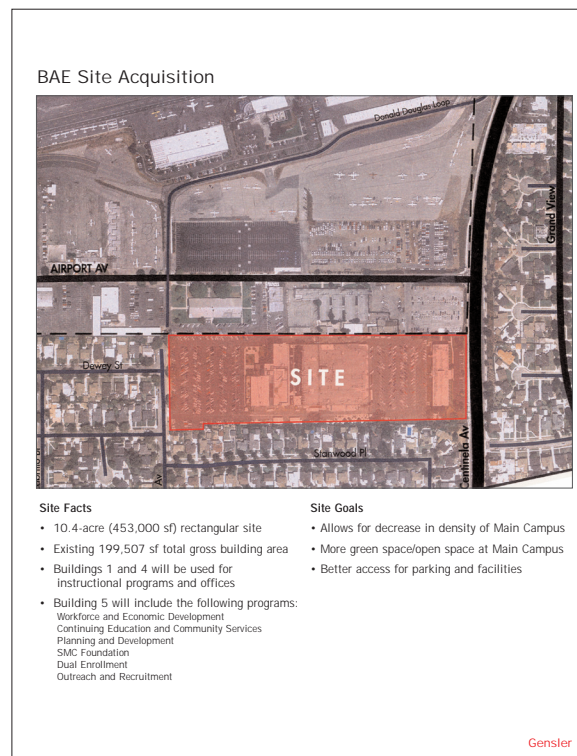


Figure 9 – First planning concept for Bundy campus as of 2002.

2002 MASTER PLAN UPDATE

The 1998 master plan was updated in 2002 to incorporate the 1998 acquisition of parking lot 6 and its original planning as a Literacy Center, the acquisition of the 10.4-acre Bundy Campus site in 2001, and the opening of the Emeritus campus in 2003. The update also reflected the actual projects completed, and identified new opportunities, including a second option for a site for the student services building. Funding was from a 2002 bond, international student fees, and private gifts.

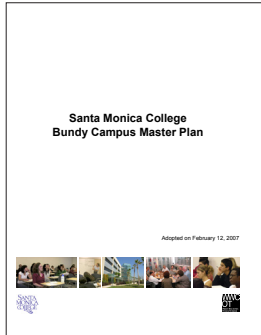


Figure 10 – 2007 SMC Bundy Campus Facility Master Plan.



Figure 11 – Final phase master plan for the 10.4 acre Bundy campus from 2007.

2007 BUNDY CAMPUS MASTER PLAN

A comprehensive master plan for the Bundy Campus was adopted in 2007. This new SMC campus opened in 2005 and replaced an existing commercial office complex operated by BAE, an aeronautics company that had historical ties to the Santa Monica Airport. The master plan confirmed the educational purposes for the site, designed new access points to the property, addressed infrastructure needs, identified structures to be renovated and others to be demolished, established a site for one replacement building, and documented campus and public outreach efforts. The environmental impact studies for the final phase of the plan were also approved in 2007. Funding was from a 2002 bond and from rental income.

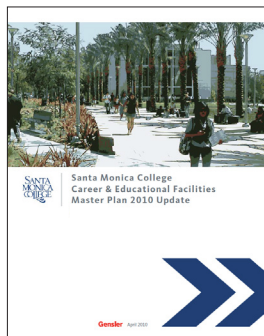


Figure 12 – 2010 SMC Facility Master Plan Update.



Figure 13 – Illustrative concept for main campus from 2010.

2010 MASTER PLAN UPDATE

The 2010 master plan provided for the orderly implementation of facility improvement projects as identified in the 2008 bond measure on the Main campus, the Academy of Entertainment and Technology campus, and the Performing Arts campus. The plan set forward guidance for open space, sustainability, pathways, and setbacks, among other criteria. The plan provided building envelopes for current and future projects on the three campuses. The environmental impact studies for the plan were also approved in 2010. At this point today, the full implementation of the master plan at the Center for Media and Design campus (the new name for the AET campus) is underway with completion set for later in 2016. For the Performing Arts Center campus, the east wing project is underway with completion set in 2016, and remaining projects are yet to be scheduled. At the Main campus, the Information Technology building is complete and the Health, PE, Fitness, Dance, and Central Plant building and project is underway, with completion set in 2016. Two of the remaining projects, the replacement Math and Science extension and the replacement of the Math Complex temporary trailers, are to be studied further in the 2016 Master Plan Update, and the other two projects, the Drescher Hall modernization and Pico frontage project and the Corsair Stadium replacement project, are deferred to a future Master Plan study expected to begin in 2018, following the completion and occupancy of the new Student Services building.

All SMC facility master plans are available at www2.smc.edu/planning.