

PICO FRONTAGE RELOCATIONS IN PREPARATION OF DEMOLISHING DRESCHER HALL, PICO CLASSROOM COMPLEX, & PICO VILLAGE

The combined site offers:

- The largest available starting footprint at two-and-quarter acres
- Upgraded facilities for multiple SMC career education programs
- The ability to fully complete the frontage of the SMC main campus
- Publicly accessible facilities and services
- High visibility of the public benefit gained from use of local bond dollars.

Pico Classroom Complex

The Pico Classroom Complex (PCC) is currently leased to Santa Monica-Malibu Unified School District while repairs are underway at SMMUSD's John Muir Elementary School. SMMUSD plans to vacate part of PCC by June 2024. Expected end date of remainder of lease to SMMUSD is June 2025. PCC can be demolished after end of lease.

Drescher Hall

Earth Sciences Labs, Planetarium, and Offices. All of Earth Sciences moves to the new Math and Science Building in Fall 2024 and Winter 2025. (Rooms DH128, 134, 136, 223, 223A, 306D, 306E, 314K, 314L, 314M, 314N, 314P, 314Q, 314R, 314S, and 314T). The small storerooms on the second floor for Earth Sciences also move to the new Math and Science Building.

Classrooms. Twenty classrooms move to Math Complex. See page 6. (Rooms DH115, 201, 202, 203, 204, 205, 207, 208, 210, 211, 212, 213, 214, 215, 216, 217, 218, 305, 308).

Instructional Support Labs. The functions provided by the Learning Resource Center (Rooms DH312, 312B, 313), the Modern Language Lab (Rooms DH219A-F and 220), and ESL Tutoring (Room DH315) move to Math Complex (Rooms MC72, 84, 84A, 84B). Rooms MC63 and 65 may also be available for Instructional Support.

English, ESL, and Modern Languages Faculty Offices. English faculty offices (Suites DH309, 310, and 311) and ESL and Modern Language faculty offices (Suite DH314) will move to the 36 offices in the Math Complex. An additional set of six offices will be added to the Math Complex by converting Room MC66 classroom to an office suite.

Instructional Support Staff. The Associate Dean and support staff will move to the Math Complex.

Communication and Media Studies Faculty Offices. These offices will move to the new Math and Science building.

STEM Offices and Instructional Space. Discussions are ongoing about the relocation of this program.

Photography. Moving the Photography labs will likely require additional preparation time to meet the Spring 2026 goal to commence demolition of Drescher Hall. Ideally, the black & white lab and the color lab could move to Rooms 100 and 102 in the (old) Art Building prior to the opening of the new Art Building at the end of 2025 and the displaced Art classrooms could move to available classroom space in the Pico Classroom Complex for a semester or two. This may not be possible, due to the lack of connection to a sink and drainage in the PCC classrooms. Pausing the construction schedule is expensive due to escalating costs of construction. Alternatives are under study. See following paragraph.

Photography Labs, Staff, and Storerooms. Room A120 in the (old) Art Building is available for conversion to a wet lab. Either the black & white wet lab (Room DH127) could move to this room or the color lab (Room DH126) could move to this room. Other options include use of the Campus Kitchen space in the Student Activities building for one or both Photography labs, and/or adding a double-wide classroom trailer near the (old) Art Building. (SMC used the trailer approach after the 1994 Northridge earthquake while it rebuilt the black & white lab.) The staff in Rooms DH110C, 110D, and 110E will move to offices in the Art Building. The storerooms (Rooms DH110B, 116, and 117 will move to rooms in the Art Building. An architect will be hired to assist with the planning of the move and resolution of the best approach in terms of program and cost.

Photography Studios. The studios in the DH110 suite will move to the Student Activities Building (Room 101). This is the former faculty dining area attached to the student cafeteria. The room will be retrofitted to remove the false ceiling to provide additional height for shooting bays, and movable partitions added to separate the various bays. A portion of Room 104 will be sectioned off to provide a secure storage location for the equipment needed to operate the studios. Room 104 is the former location of Campus Kitchen and is no longer in use. Bookstore leadership has offered to assist with the planning for the conversion.

Engineering Computer Lab. This lab is in DH109A and will move to Room 252 in the Humanities and Social Sciences building. The Earth Science lab currently in HS252 will move to the new Math and Science building.

Maker's Space. This lab is in DH109B and will move to one of the rooms in the (old) Art Building.

Cheer Team. The Cheer Team practices and stores equipment in DH103 and 104. Cheer will move to Math Complex Room 15, which is divided into several smaller rooms and was last used as the temporary location for the Athletics trainer. A tentative plan is for members of the Cheer Team to store shoes appropriate for a dance floor in this room, and to use G4 for practice. G4 is a large, mirrored dance floor in the basement of the Gymnasium and has not been scheduled

for use for several years. This request requires consent of both Academic and Student Services leadership.

Drescher Room 100 Storage. In late 2023, this room was vacated by Operations and turned over to Theater Arts for storage of costumes and stage furnishings and to the Bookstore for inventory storage. **Bookstore** leadership indicates that it will not be needing this space for inventory. Storage for **Theater Arts** will move to a classroom trailer to be located either on Lot 5 or on the former site of Foster’s Freeze. The trailer will also be used to store the Theater Arts furniture currently stored in a fenced area in the yard. This trailer should have a roll-up door.

Bike Repair. Bike Repair, a Community Services class offering, located in DH122, will move to a classroom trailer to be located either on Lot 5 or on the former site of Foster’s Freeze.

Custodial Operations. Custodial Operations includes offices and lockers in DH101 and equipment and material storage in Rooms DH118, 120, 120A, 121, 123, 124, 125, 125A, 125B, and 125C. Storage is also in a fenced area in the yard. Custodial Operations will move to rooms within the former ESL building, and/or to the former Campus Kitchen area within the Student Activities Building, and/or to available space within the (old) Art Building. Storage of bulk materials may also be sited in fenced areas within the parking garage under the Student Services Center. The Washer/Dryer used by Custodial Operations will be relocated to the Student Activities Building.

Vendor Storage. Inventory for one of the food vendors is in DH119, which will move to an area within the former Campus Kitchen in the Student Activities Building.

Faculty Association and CSEA Offices. These two bargaining units are currently housed in Suite 300 in Drescher. Discussions are ongoing about the relocation of the offices. There are likely opportunities for relocation into the Student Services Center building.

Risk Management. The Risk Management officer is in DH306A. Discussions are ongoing about the relocation of the office. There are likely opportunities for relocation into the Student Services Center building.

Pico Village

Pico Village is a set of nine individual trailer classrooms. One will be repurposed for Bike Repair and one other will be repurposed for Theater Arts storage. A decision about the need for continued use as classrooms will be made after Spring 2025 which is the first semester of use of the new Math and Science building.

Drescher Hall Room Relocations

1st Floor

Illustration revision 7-12-23



Legend

- Custodial
- Photography
- Classroom
- Office
- Bike Repair
- Vendor
- Cheer
- Maker Space
- STEM
- FA Suite/CSEA Suite

Drescher Hall Room Relocations

2nd & 3rd Floor

Illustration revision 7-12-23



Legend

- Custodial
- Photography
- Classroom
- Office
- Bike Repair
- Vendor
- Cheer
- Maker Space
- STEM
- FA Suite/CSEA Suite

	DRESCHER HALL			MATH COMPLEX			NEW MATH & SCIENCE		
1	DH	115	60	MC	1	67	MS	101	42
2	DH	201	30	MC	2	44	MS	201	42
3	DH	202	40	MC	3	38	MS	202	42
4	DH	203	35	MC	4	42	MS	203	42
5	DH	204	35	MC	5	46	MS	205	42
6	DH	205	35	MC	6	49	MS	206	42
7	DH	207	45	MC	7	37	MS	207	42
8	DH	208	40	MC	8	42	MS	208	42
9	DH	210	35	MC	9	41	MS	209	42
10	DH	211	47	MC	10	44	MS	210	42
11	DH	212	35	MC	11	45	MS	211	42
12	DH	213	40	MC	12	41	MS	212	42
13	DH	214	47	MC	13	34	MS	214	72
14	DH	215	35	MC	14	41	MS	301	42
15	DH	217	35	MC	16	48	MS	302	42
16	DH	218	40	MC	67	50	MS	303	42
17	DH	221	40	MC	70	45	MS	305	42
18	DH	222	41	MC	71	45	MS	306	42
19	DH	305	45	MC	73	35	MS	307	42
20	DH	308	30	MC	74	38	MS	308	42
21	DH	220	55	MC	82	36	MS	309	42
22	DH	312	50	MC	83	39	MS	310	42
23	DH	315	20	MC	66	45	MS	311	72
24				MC	72	48	MS	102	45
25	PICO VILLAGE			MC	84	64	MS	103	16
26							MS	106	30
27	PV	171	46				MS	107	72
28	PV	172	46				MS	108	66
29	PV	173	46						
30	PV	174	46						
31	PV	175	46						
32	PV	176	46						
33	PV	177	46						
34	PV	178	46						
35	PV	179	46						

Drescher → Math Complex → New Math & Science

- Lighter colors are classrooms; darker colors are tutoring and computer labs.
- Second columns are room numbers; third columns are seat counts.
- Two of the classrooms in Drescher Hall are outfitted with computers, as will be two classrooms in Math Complex.
- The MC 66 classroom will be converted to offices.
- All classrooms and labs in Math Complex move to new Math & Science Building.
- All classrooms and labs in Drescher Hall move to Math Complex.
- Several classrooms in old Art Building will be available to replace Pico Village trailers.
- Decision about relocating other Pico Village trailers will be made in Spring 2025 after opening of Math & Science.

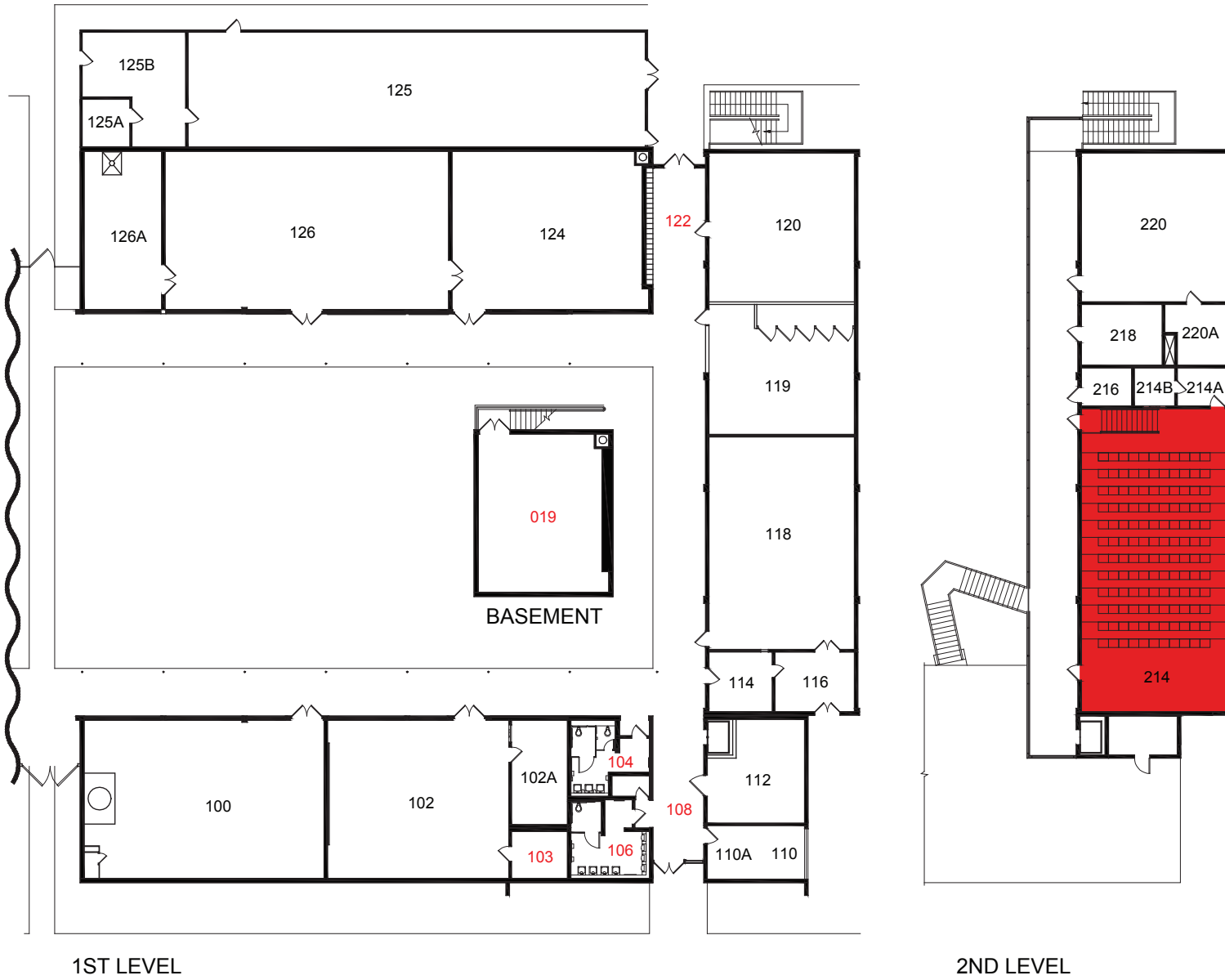
Math Village After Relocations to New Science & Math Building




Legend

 Center for Wellness and Wellbeing

Art Building After Relocations to New Art Building at 16th and Pico



Legend

 Classroom

Student Health & Activities Building

Current Uses

Illustration revision 7-19-23



1ST FLOOR

BASEMENT

2ND FLOOR

Legend

- Food Service
- Food Service Not In Use
- Bookstore
- Health Center
- Bodega
- Bodega Temp
- Not in use
- Cafeteria
- Open Study Space
- Veterans Success Center and potential additional student service programs
- Open Computer Lab
- Associated Students

SANTA MONICA COLLEGE

PICO CLASSROOM COMPLEX 01

Pico Blvd

