

## **APPENDIX E**

### **Letters from Public Service and Utility Agencies**

## **List of Letters from Public Service and Utility Agencies**

- **Susan Lowell, P.E., Water Resources Engineer, City of Santa Monica Water Resources Division, October 15, 2009.**
- **Beatrice Coleman, Customer Service Planner, Southern California Edison, October 28, 2009.**
- **Karen Ginsberg, Assistant Director, City of Santa Monica Community & Cultural Services, November 24, 2009.**
- **Myesha Jones, Business Assistant, City of Santa Monica Public Works – Solid Waste Management Division, November 30, 2009.**



Water Resources Division  
1212 Fifth Street  
3<sup>rd</sup> Floor  
Santa Monica, California 90401

October 15, 2009

Ms. Brittany Burkhead  
Christopher A. Joseph & Associates  
25031 W. Avenue Stanford, Suite 50  
Santa Clarita, CA 91355

**SUBJECT: Santa Monica College Facilities Master Plan 2009 Update  
Request for Water and Wastewater Service Information**

Dear Ms. Burkhead:

We have received your September 22, 2009 request for information, copy attached, for the subject master plan and have enclosed with this letter GIS snapshots of the utilities surrounding the Main Campus at 1900 Pico Blvd.; the Academy of Entertainment and Technology Campus at 1660 Stewart Street; the Olympic Shuttle lot at the northeast corner of Stewart Street and Exposition Blvd.; the SMC Performing Arts Campus at 1310 11<sup>th</sup> Street; the Emeritus College Campus at 1227 Second Street; the Airport Arts Campus at 2800 Airport Avenue; and, the Administration Building at 2714 Pico Blvd., all within the City of Santa Monica's corporate boundaries.

Questions 1, 3, 5, 5a, 8a, 8b, 10, 11, 13, 13a:

The sizes of all adjacent water and wastewater mains are shown on the enclosed GIS snapshots. We have no capacity data for you and at the time of development it would be the developer's responsibility to prove to us that any increased impacts upon our systems would not require an upgrade of the serving utilities. This would require both a sewer and water study addressing the various sites where you are developing. Also, fire flow requirements for Santa Monica are set by the SMFD rather than LAFD.

Questions 2 & 12:

There are no known deficiencies in our systems at this time.

**SUBJECT: Santa Monica College Facilities Master Plan 2009 Update  
Request for Water and Wastewater Service Information**

Questions 4 and 16:

The City of Los Angeles 2002 Water Consumption Rates are fine. We use the current City of Los Angeles Amalgamated Systems Sewage Generation Factors for sewer design, copy enclosed.

Questions 6, 6a & 6b:

The City of Santa Monica treats all its water at the Arcadia Water Treatment Facility which is presently under reconstruction. We are ready to serve all development within the City of Santa Monica corporate boundaries.

Questions 7 and 15:

There should be little disruption in services to your sites as the new connections would be installed prior to the old ones being taken out of service on a case-by-case basis. These details will be worked out during construction.

Question 8, 8a and 8b:

At the time of design, the developer would be required to request and pay for flow tests in the water mains to determine the static pressures in the service mains and if fire flows are adequate for developments. Any infrastructure improvements necessary would have to be performed by the developer.

Question 14:

The City of Los Angeles operates the Hyperion WW Treatment Facility and would be able to answer your questions.

You have requested information regarding the reduction of water and wastewater impacts to your system. May I suggest the uses of all available green building technology, high efficiency low flow plumbing fixtures, drought-tolerant landscaping designed for your exact micro-weather conditions and perhaps treatment and re-use on the Main Campus of urban runoff to save both money and potable water use.

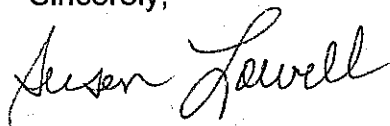
October 15, 2009  
Page 3 of 3 pages

**SUBJECT: Santa Monica College Facilities Master Plan 2009 Update  
Request for Water and Wastewater Service Information**

The City of Santa Monica's Office of Sustainability and the Environment would be able to offer you additional water and energy savings methodologies. Their Green Buildings Program would be able to offer you information on LEED design criteria, which may save you future O & M costs.

If you need anything else, please do not hesitate to call me at (310) 458-8286.

Sincerely,

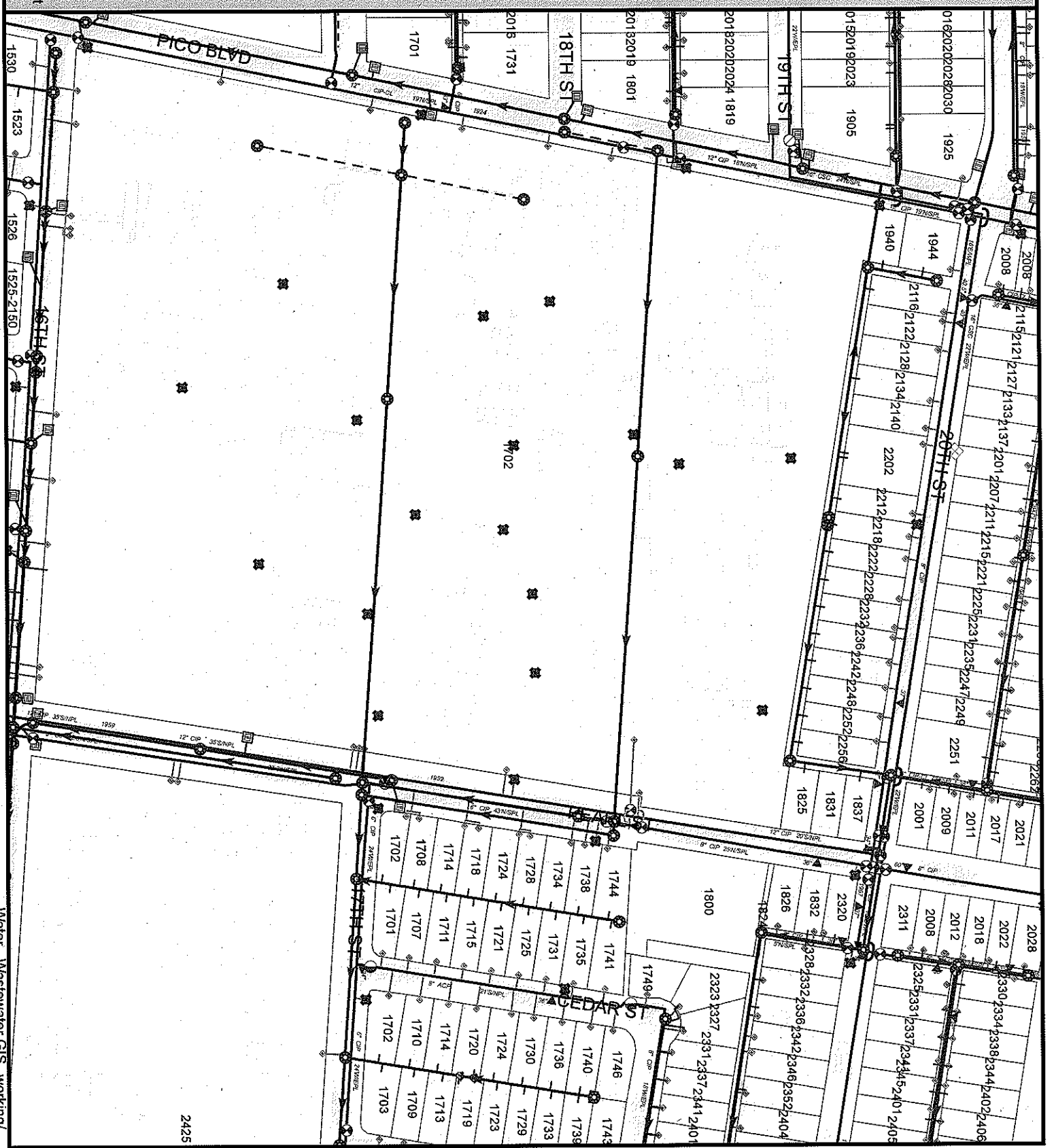


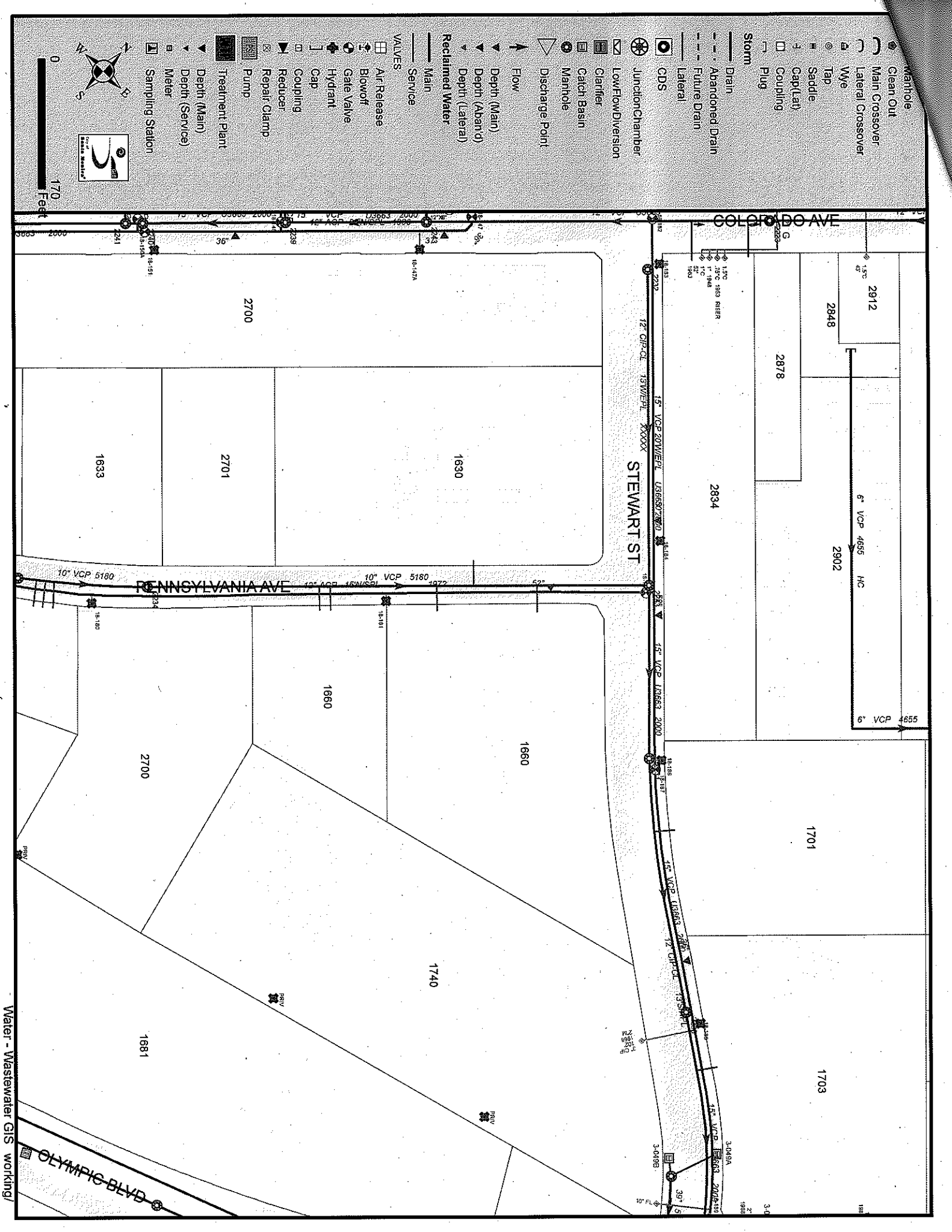
Susan Lowell, P.E.  
Water resources Engineer

Encl.

Cc: Gilbert M. Borboa, Jr., Water Resources Manager (w/encl)

- Manhole
- Clean Out
- Main Crossover
- Lateral Crossover
- Wye
- Tap
- Saddle
- Cap (Lat)
- Coupling
- Plug
- Storm
- Drain
- - - Abandoned Drain
- - - Future Drain
- Lateral
- GDS
- Junction Chamber
- Low Flow Diversion
- Clarifier
- Catch Basin
- Manhole
- Discharge Point
- Flow
- ▼ Depth (Main)
- ▼ Depth (Aband)
- ▼ Depth (Lateral)
- Reclaimed Water
- Main
- Service
- VALVES
- Air Release
- Blowoff
- Gate Valve
- Hydrant
- Cap
- Coupling
- Reducer
- Repair Clamp
- Pump
- Treatment Plant
- ▼ Depth (Main)
- ▼ Depth (Service)
- Meter
- Sampling Station



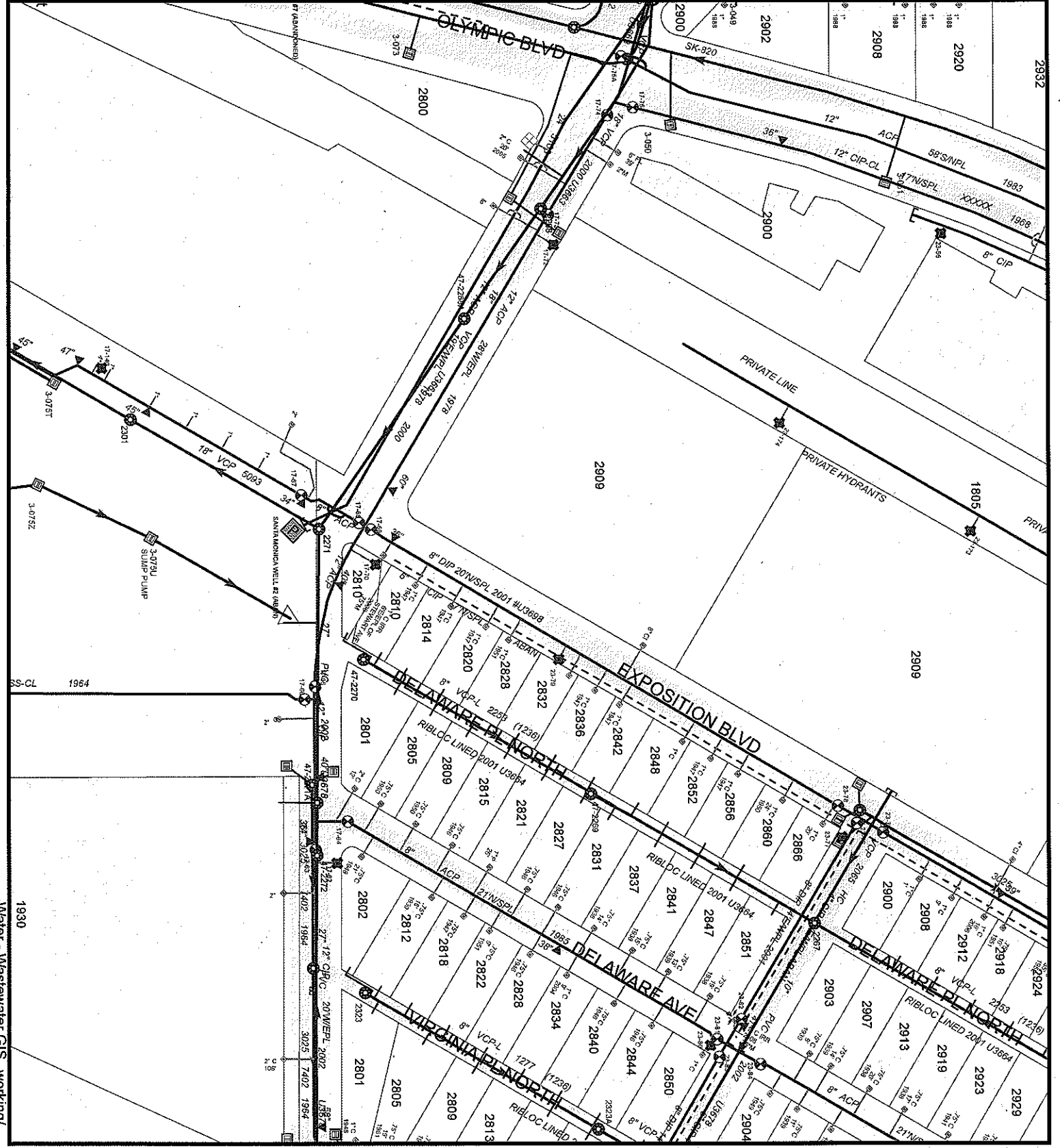
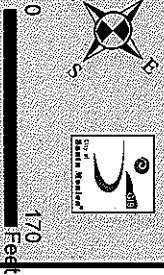


- Manhole
- Clean Out
- Main Crossover
- Lateral Crossover
- Wye
- Tap
- Saddle
- Cap (Lat)
- Coupling
- Plug
- Storm
- Drain
- Abandoned Drain
- Future Drain
- Lateral
- CDS
- Junction Chamber
- LowFlow/Diversion
- Clarifier
- Catch Basin
- Manhole
- Discharge Point
- Flow
- Depth (Main)
- Depth (Aband'd)
- Depth (Lateral)
- Reclaimed Water
- Main
- Service

- VALVES
- Air Release
- Blowoff
- Gate Valve
- Hydrant
- Cap
- Coupling
- Reducer
- Repair Clamp
- Pump
- Treatment Plant
- Depth (Main)
- Depth (Service)
- Meter
- Sampling Station



- Manhole
- Clean Out
- Main Crossover
- Lateral Crossover
- Weir
- Tap
- Saddle
- Cap(Lat)
- Coupling
- Plug
- Storm
- Drain
- Abandoned Drain
- Future Drain
- Lateral
- CDS
- Junction Chamber
- Low Flow Diversion
- Clarifier
- Catch Basin
- Manhole
- Discharge Point
- Flow
- ▼ Depth (Main)
- ▼ Depth (Lateral)
- ▼ Depth (Service)
- Reclaimed Water
- Main
- Service
- VALVES
- Air Release
- Blowoff
- Gate Valve
- Hydrant
- Cap
- Coupling
- Reducer
- Repair Clamp
- Pump
- Treatment Plant
- ▼ Depth (Main)
- ▼ Depth (Service)
- Meter
- Sampling Station

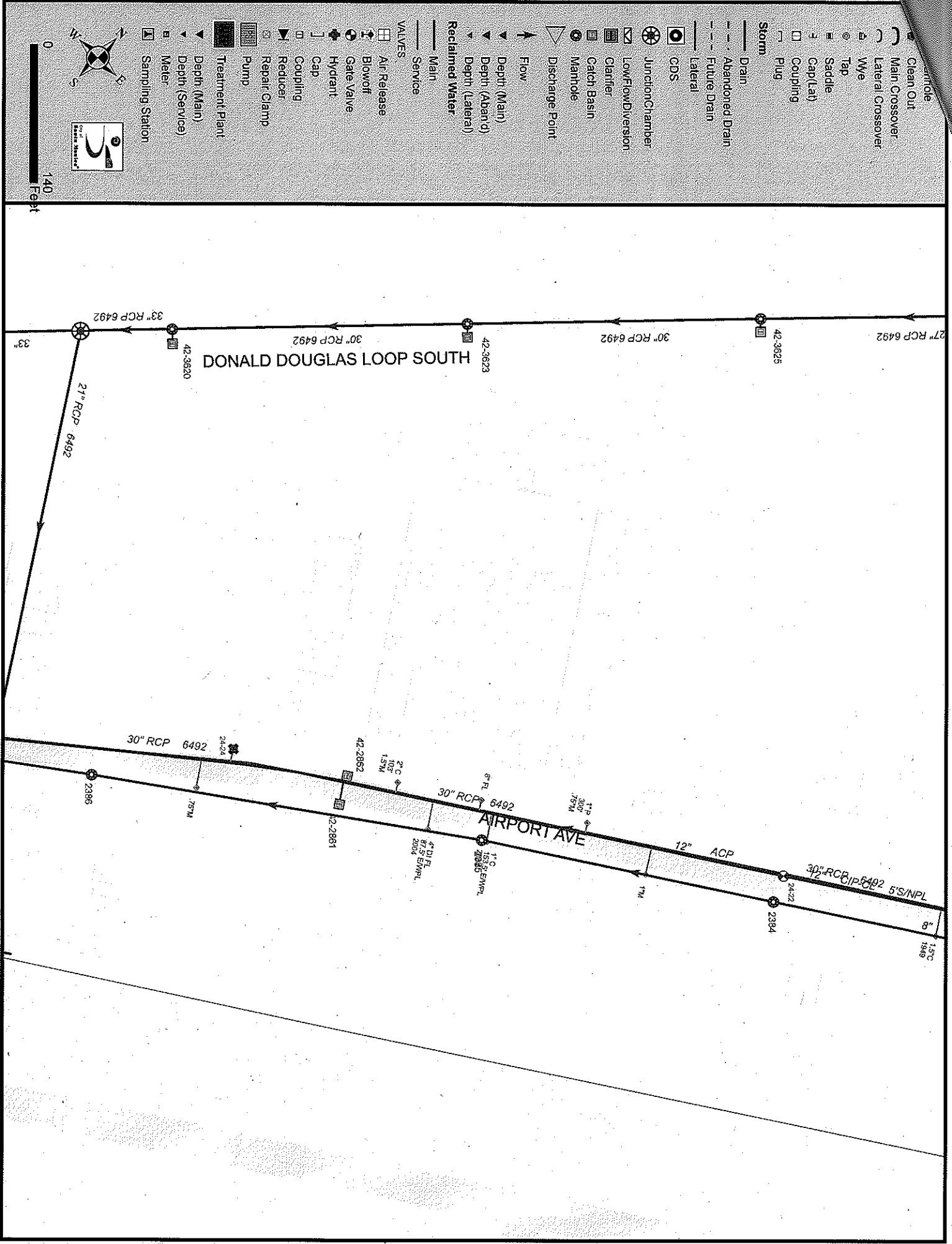








- Manhole
- Clean Out
- Main Crossover
- Lateral Crossover
- Wye
- Tap
- Saddle
- Cap (Lat)
- Coupling
- Plug
- Storm
- Drain
- Abandoned Drain
- Future Drain
- Lateral
- CDS
- Junction Chamber
- Low Flow Diversion
- Clarifier
- Catch Basin
- Manhole
- ▽ Discharge Point
- Flow
- ▲ Depth (Main)
- ▲ Depth (Aband'd)
- ▲ Depth (Lateral)
- Reclaimed Water
- Main
- Service
- VALVES
- Air Release
- Blowoff
- Gate Valve
- Hydrant
- Coupling
- Reducer
- Repair Clamp
- Pump
- Treatment Plant
- ▲ Depth (Main)
- ▲ Depth (Service)
- Meter
- Sampling Station

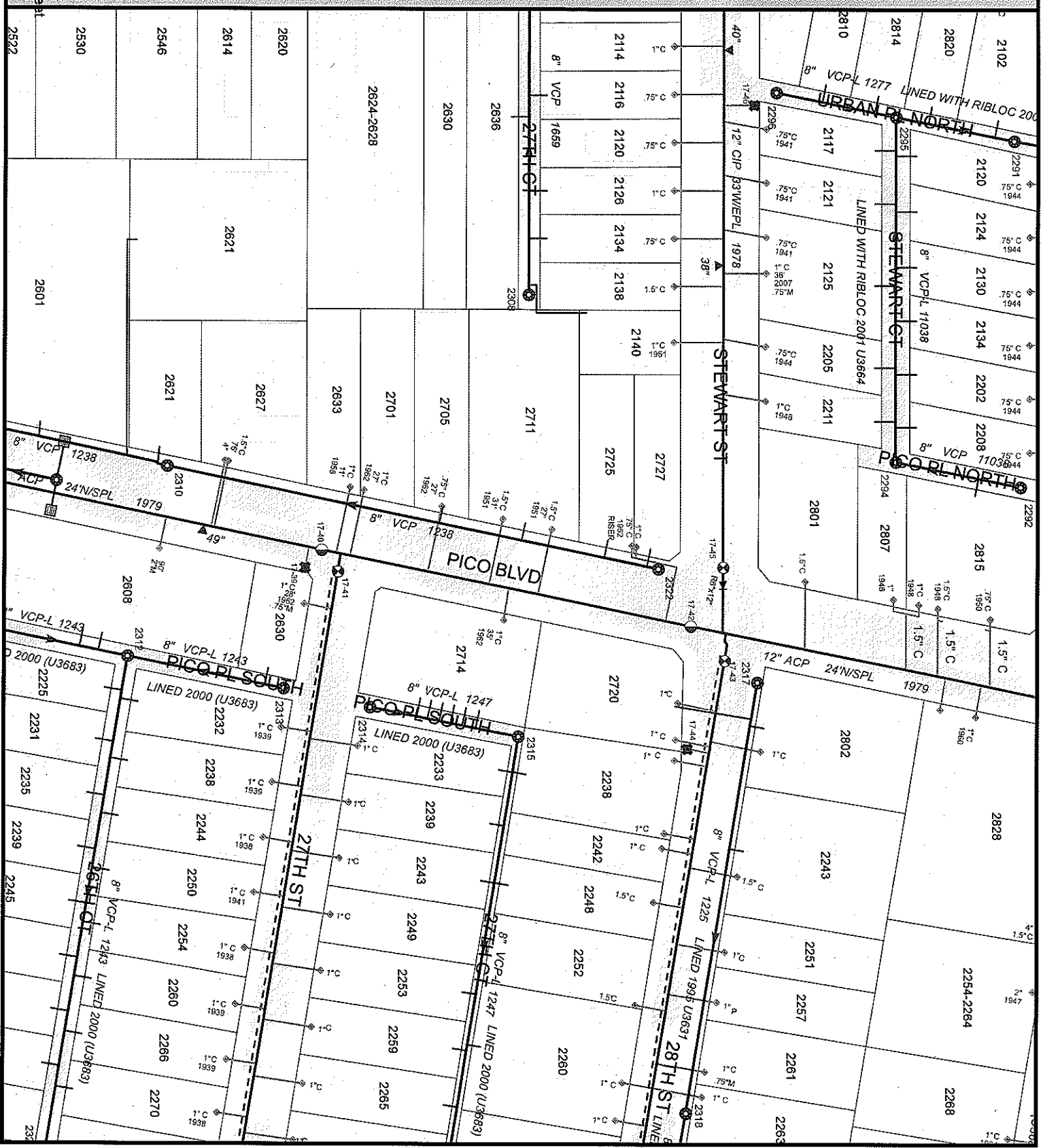


Water - Wastewater GIS working/

- Clean Out
- Main Crossover
- Lateral Crossover
- Wye
- Tap
- Saddle
- Cap (Lead)
- Coupling
- Plug
- Storm
- Drain
- Abandoned Drain
- Future Drain
- Lateral
- CDS
- Junction Chamber
- Low Flow/Inversion
- Clarifier
- Catch Basin
- Manhole
- Discharge Point
- Flow
- Depth (Main)
- Depth (Aband)
- Depth (Lateral)
- Reclaimed Water
- Main
- Service
- VALVES
- Air Release
- Blowoff
- Gate Valve
- Hydrant
- Cap
- Coupling
- Reducer
- Repair Clamp
- Pump
- Treatment Plant
- ▼ Depth (Main)
- ▼ Depth (Service)
- ▼ Meter
- ▼ Sampling Station



0 140 Feet



ASSIGNMENT OF AMALGAMATED SYSTEM SEWAGE GENERATION FACTORS TO COUNTY USE CODES

Code	County Use Classification Description	Additional County Descriptor	LA Sewage Generation Factors				Amalgamated System Sewage Generation Factors			
			Applicable LA SFC Use Category	SGF in GPD	BOD (mg/l)	SS (mg/l)	SGF in GPD	BOD (mg/l)	SS (mg/l)	
010X,0200,010D,010 H,060X,06D	Single; Double; Duplex or Two- unit (Regular and Modular)	1 Bedroom	RESIDENTIAL: DUPLX/TOWNHOUSE/SFD - 1 BDR	130 /DU	265	275	130 /DU	265	275	
010X,0200,010D,010 H,060X,06D	Single; Double; Duplex or Two- unit (Regular and Modular)	2 Bedrooms	RESIDENTIAL: DUPLX/TOWNHOUSE/SFD - 2 BDR	180 /DU	265	275	180 /DU	265	275	
010X,0200,010D,010 H,060X,06D	Single; Double; Duplex or Two- unit (Regular and Modular)	3 Bedrooms	RESIDENTIAL: DUPLX/TOWNHOUSE/SFD - 3 BDR	230 /DU	265	275	230 /DU	265	275	
010X,0200,010D,010 H,060X,06D	Single; Double; Duplex or Two- unit (Regular and Modular)	> 3 Bedrooms	RESIDENTIAL: DUPLX/TOWNHOUSE/SFD - >3 BDR	50 /ADDITIONAL BDR	265	275	50 /ADDITIONAL BDR	265	275	
010C,010E,010F,030 0,0400,05XX,8891, 061X,1020	Condominium; Condominium Conversion; Cooperative, Three- unit; Four-unit; Five or More Apartment or Units; (Regular and Modular) Public Housing; Artist in Residence	Bachelor?	RESIDENTIAL: APT - BACHELOR	80 /DU	265	275	80 /DU	265	275	
010C,010E,010F,030 0,0400,05XX,8891	Condominium; Condominium Conversion; Cooperative, Three- unit; Four-unit; Five or More Apartment or Units; (Regular and Modular) Public Housing	1 Bedroom	RESIDENTIAL: CONDO, APT - 1 BDR,	120 /DU	265	275	120 /DU	265	275	
010C,010E,010F,030 0,0400,05XX,8891	Condominium; Condominium Conversion; Cooperative, Three- unit; Four-unit; Five or More Apartment or Units; (Regular and Modular) Public Housing	2 Bedrooms	RESIDENTIAL: CONDO, APT - 2 BDR	160 /DU	265	275	160 /DU	265	275	
010C,010E,010F,030 0,0400,05XX,8891	Condominium; Condominium Conversion; Cooperative, Three- unit; Four-unit; Five or More Apartment or Units; (Regular and Modular) Public Housing	3 Bedrooms	RESIDENTIAL: CONDO, APT - 3 BDR	200 /DU	265	275	200 /DU	265	275	
010C,010E,010F,030 0,0400,05XX,8891	Condominium; Condominium Conversion; Cooperative, Three- unit; Four-unit; Five or More Apartment or Units; (Regular and Modular) Public Housing	> 3 Bedrooms	RESIDENTIAL: CONDO, APT - >3 BDR	40 /ADDITIONAL BDR	265	275	40 /ADDITIONAL BDR	265	275	
07X0,090X	Mobile Homes; Mobile Home Parks	Number of Dwelling Units	RESIDENTIAL: MOBILE HOME	160 /DU	265	275	160 /DU	265	275	

ASSIGNMENT OF AMALGAMATED SYSTEM SEWAGE GENERATION FACTORS TO COUNTY USE CODES

Code	County Use Classification	Description	Additional County Descriptor	Applicable LA SFC Use Category	LA Sewage Generation Factors				Amalgamated System Sewage Generation Factors			
					SGF in GPD	BOD (mg/l)	SS (mg/l)	SGF in GPD	BOD (mg/l)	SS (mg/l)		
0800	Rooming Houses		Number of Bedrooms	HOMELESS SHELTER	75	265	275					
0800	Rooming Houses		Number of Bedrooms	RESIDENTIAL DORM: COLLEGE OR RESIDENTIAL	75 /STUDENT	265	275					
0800	Rooming Houses		Number of Bedrooms	RESIDENTIAL: BOARDING HOUSE	75 /BED	265	275					
0800	Rooming Houses		Number of Bedrooms	SCHOOL: DORMITORY	75 /STUDENT	265	275	75 /BED	265	275		
0800	Rooming Houses											
1000,1010,8890	Commercial; Community Redevelopment			COMMERCIAL USE	80 /1000 GR.SQ.FT.	150	150	80 /1000 GR.SQ.FT.	150	150		
1100	Stores			BAKERY	280 /1000 GR.SQ.FT.	1000	600					
1100	Stores			COLD STORAGE: RETAIL SALES	80 /1000 GR.SQ.FT.	150	150					
1100	Stores			DAIRY: RETAIL AREA	80 /1000 GR.SQ.FT.	150	150					
1100	Stores			FILM PROCESSING - 1 HOUR PHOTO, etc.	100 /1000 GR.SQ.FT.	150	150					
1100	Stores			POST OFFICE: PRIVATE MAIL BOX	80 /1000 GR.SQ.FT.	150	150					
1100	Stores			RENTAL	80 /1000 GR.SQ.FT.	150	150					
1100	Stores			RETAIL AREA	80 /1000 GR.SQ.FT.	1000	600					
1100	Stores			STORE: ICE CREAM/YOGURT	80 /1000 GR.SQ.FT.	150	150					
1200	Residence)			STORE: RETAIL	80 /1000 GR.SQ.FT.	150	150					
1100,13X0	Stores, Department Stores											
2200	Wholesale and Manufacturing Outlets											
8872	Government - Souvenir Shop											
1100,1200,13X0, 2200	Stores; Store Combinations; Department Stores; Wholesale and Manufacturing Outlets							80 /1000 GR.SQ.FT.	150	150		
14X0	Supermarkets			Markets: Retail	gpd of Avg. Process Flow	800	800					
14X0	Supermarkets			Markets: Wholesale	gpd of Avg. Process Flow	800	800					
14X0	Supermarkets			Markets without Garbage disposal (eg. Convenience Stores)	gpd of Avg. Process Flow	150	150	?	?	800	800	
1500	Shopping Centers (Neighborhood, Community)			MINI-MALL	80 /1000 GR.SQ.FT.	600	400					
1500,1600	Shopping Centers (Neighborhood, Community & Regional)			Combined Commercial & Retail (Shopping Center)	100 gpd	600	400					











ASSIGNMENT OF AMALGAMATED SYSTEM SEWAGE GENERATION FACTORS TO COUNTY USE CODES

Code	County Use Classification	Description	Additional County Descriptor	LA Sewage Generation Factors			Amalgamated System Sewage Generation Factors				
				Applicable LA SFC Use Category	SGF in GPD	BOD (mg/l)	SS (mg/l)	SGF in GPD	BOD (mg/l)	SS (mg/l)	
?	Laboratories			Laboratories: X-ray LABORATORY: INDUSTRIAL	gpd of Avg. Process Flow Avg. Process Flow	339 339	151 151	250 /1000 GR.SQ.FT.	339	151	
2510	Service Stations			GAS STATION: FOUR BAYS MAX GAS STATION: SELF SERVICE	430 /STATION 100 /W.C.	180 180	280 280				
2500	Service Stations			Steam Cleaning: Auto	gpd of Avg. Process Flow	1,150	1,250				
2500	Service Stations			Truck Repair & Service	gpd of Avg. Process Flow	180	280				
2500	Service Stations			Truck Washing & Steam Cleaning	gpd of Avg. Process Flow	1,150	1,250				
2500, 2510	Service Stations							430 /STATION	180	280	
2640	Car Washes - Self Service?			CAR WASH: COIN OPERATED BAYS	Avg. Process Flow	20	150	?	?	20	150
2520, 2630	Car Washes In Service Stations, Auto Service			Auto Laundry	gpd of Avg. Process Flow	20	150				
2520, 2630	Car Washes In Service Stations, Auto Service			CAR WASH: AUTOMATIC	Avg. Process Flow	20	150				
2520, 2630	Car Washes In Service Stations, Auto Service			CAR WASH: COUNTER & SALE AREA	80 /1000 GR.SQ.FT.	20	150				
2520, 2630	Car Washes In Service Stations, Auto Service			CAR WASH: HAND WASH	Avg. Process Flow	20	150				
2520, 2630	Car Washes In Service Stations, Auto Service							?	?	20	150
2600, 2670	Auto Service Shops, Body and Fender, Auto Service Centers			AUTO BODY/MECH. REPAIR SHOP (DOMESTIC)	80 /1000 GR.SQ.FT.	180	280				
2600, 2670	Auto Service Shops, Body and Fender, Auto Service Centers			AUTO BODY/MECH. REPAIR SHOP (INDUSTRIAL)	Avg. Process Flow	180	280				
8835	Government - School Service Center										
2600, 2610, 2620, 265	Auto, Recreation & Constr. Equip., Sales & Service							80 /1000 GR.SQ.FT.	180	280	

Parking Lots and Structures -  
Commercial-use, Industrial-use,  
Noncharitable Churches,  
Government Leased

AUTO-PARKING

20 /1000 GR.SQ.FT.

150

150

20 /1000 GR.SQ.FT.

150

150

ASSIGNMENT OF AMALGAMATED SYSTEM SEWAGE GENERATION FACTORS TO COUNTY USE CODES

Code	County Use Classification Description	Additional County Descriptor	Applicable LA SFC Use Category	LA Sewage Generation Factors				Amalgamated System Sewage Generation Factors					
				SGF In GPD	BOD (mg/l)	SS (mg/l)	?	SGF In GPD	BOD (mg/l)	SS (mg/l)	?		
2800	Animal Kennels		HOSPITAL: ANIMAL	280	150	150							
2800	Animal Kennels		KENNEL: DOG KENNEL/OPEN	100	150	150							
2800	Animal Kennels			100	150	150		100	150	150			
2900	Nurseries or Greenhouses		Nurseries	gpd of Avg. Process Flow	150	150	?	?	150	150			
3100	Light Manufacturing		Apparel, Fabrics Made from Fibers	gpd of Avg. Process	150	150							
3100	Light Manufacturing		Blueprinting Equipment Supplies, etc.	100 gpd of Avg. Process	290	550							
3100	Light Manufacturing		Cooperate	gpd of Avg. Process	290	550							
3100	Light Manufacturing		Etchers & Engravers	gpd of Avg. Process	10	4,300							
3100	Light Manufacturing		Film Processing: Filter Cleaning	gpd of Avg. Process	290	550							
3100	Light Manufacturing		Film Processing: Industrial	gpd of Avg. Process	160	60							
3100	Light Manufacturing		MACHINE SHOP (DOMESTIC)	80 /1000 GR.SQ.FT.	150	150							
3100	Light Manufacturing		Machine Shop (Industrial)	gpd of Avg. Process	290	550							
3100	Light Manufacturing		MACHINE SHOP (INDUSTRIAL)	Avg. Process Flow	290	550							
3100	Light Manufacturing		MANUFACTURING OR INDUSTRIAL	80 /1000GR.SQ.FT.	150	150							
3100	Light Manufacturing		MANUFACTURING OR INDUSTRIAL	Avg. Process Flow	150	150							
3100	Light Manufacturing		Photograph Record Mfg.	gpd of Avg. Process	298	599							
3100	Light Manufacturing		Photo Engraving & Etching	gpd of Avg. Process	290	550							
3100	Light Manufacturing		PLATING PLANT (DOMESTIC)	80 /1000 GR.SQ.FT.	150	150							
3100	Light Manufacturing		PLATING PLANT (INDUSTRIAL)	Avg. Process Flow	150	150							
3100	Light Manufacturing		Printing: Glass, Metal, Plastic	gpd of Avg. Process	1,310	1,134							
3100	Light Manufacturing		Printing: Glass, Metal, Plastic	gpd of Avg. Process	1,310	1,134							
3100	Light Manufacturing		Printing: Silkscreen	gpd of Avg. Process	270	62							
3100	Light Manufacturing		Printing: Textile	gpd of Avg. Process	290	550							
3100	Light Manufacturing		Printing: Type-Setting	gpd of Avg. Process	290	550							
3100	Light Manufacturing		Water Treating & Service Equip.	gpd of Avg. Process	290	550							
3100	Light Manufacturing				?	?		?	290	550			
3200, 30X0	Heavy Manufacturing: Misc. Industrial		Air Cond. & Refrig. Equip. & Serv.	gpd of Avg. Process Flow	290	550							
3200, 30X0	Heavy Manufacturing: Misc. Industrial		Aircraft Mfg., Serv. & Maint.	gpd of Avg. Process Flow	180	280							
3200, 30X0	Heavy Manufacturing: Misc. Industrial		Asphalt & Asphalt Prod. Mfg.	gpd of Avg. Process Flow	177	487							
3200, 30X0	Heavy Manufacturing: Misc. Industrial		Auto Mfg., Serv. Maint.	gpd of Avg. Process Flow	180	280							
3200, 30X0	Heavy Manufacturing: Misc. Industrial		Batteries Mfg. & Servicing	gpd of Avg. Process Flow	290	550							
3200, 30X0	Heavy Manufacturing: Misc. Industrial		Boiler Mfg. & Servicing	gpd of Avg. Process Flow	290	550							
3200, 30X0	Heavy Manufacturing: Misc. Industrial		Building Material	gpd of Avg. Process Flow	177	487							
3200, 30X0	Heavy Manufacturing: Misc. Industrial		Bus Mfg. & Servicing	gpd of Avg. Process Flow	180	280							
3200, 30X0	Heavy Manufacturing: Misc. Industrial		Ceramic & Clay Prod. Mfg.	gpd of Avg. Process Flow	290	550							

ASSIGNMENT OF AMALGAMATED SYSTEM SEWAGE GENERATION FACTORS TO COUNTY USE CODES

Code	County Use Classification	Description	Additional County Descriptor	Applicable LA SFC Use Category	LA Sewage Generation Factors				Amalgamated System Sewage Generation Factors			
					SGF in GPD	BOD (mg/l)	SS (mg/l)	SGF in GPD	BOD (mg/l)	SS (mg/l)		
3200, 30X0	Heavy Manufacturing: Misc.	Industrial		Comp. Gases-Mfg, Handling	gpd of Avg. Process Flow	290	550					
3200, 30X0	Heavy Manufacturing: Misc.	Industrial		Concrete Products Mfg.	gpd of Avg. Process Flow	177	487					
3200, 30X0	Heavy Manufacturing: Misc.	Industrial		Cosmetic Mfg.	gpd of Avg. Process Flow	150-1,900	32-280					
3200, 30X0	Heavy Manufacturing: Misc.	Industrial		Foundries	gpd of Avg. Process Flow	290	230-2,700					
3200, 30X0	Heavy Manufacturing: Misc.	Industrial		Grinding (Minerals)	gpd of Avg. Process Flow	290	550					
3200, 30X0	Heavy Manufacturing: Misc.	Industrial		Industrial Discharge	gpd of Avg. Process Flow	290	550					
3200, 30X0	Heavy Manufacturing: Misc.	Industrial		Lumber Treating	gpd of Avg. Process Flow	298	599					
3200, 30X0	Heavy Manufacturing: Misc.	Industrial		Machinery Mfg. (Except Elect.)	gpd of Avg. Process Flow	290	550					
3200, 30X0	Heavy Manufacturing: Misc.	Industrial		Metal Fabrication (Weld)	gpd of Avg. Process Flow	290	550					
3200, 30X0	Heavy Manufacturing: Misc.	Industrial		Metal Finishing & Plating	gpd of Avg. Process Flow	10	39-10,000					
3200, 30X0	Heavy Manufacturing: Misc.	Industrial		Metal Treating	gpd of Avg. Process Flow	10	5,300					
3200, 30X0	Heavy Manufacturing: Misc.	Industrial		Mirror Mfg. & Glass Treatment	gpd of Avg. Process Flow	290	550					
3200, 30X0	Heavy Manufacturing: Misc.	Industrial		Paint Mfg.	gpd of Avg. Process Flow	300-14,000	200-99,000					
3200, 30X0	Heavy Manufacturing: Misc.	Industrial		Paint Removers, Mfg. Service	gpd of Avg. Process Flow	1,310	1,134					
3200, 30X0	Heavy Manufacturing: Misc.	Industrial		Paint Spray Booths	gpd of Avg. Process Flow	1,310	1,134					
3200, 30X0	Heavy Manufacturing: Misc.	Industrial		Paper Mfg.	gpd of Avg. Process Flow	676	493					
3200, 30X0	Heavy Manufacturing: Misc.	Industrial		Paper Products Mfg.	gpd of Avg. Process Flow	676	493					
3200, 30X0	Heavy Manufacturing: Misc.	Industrial		Paper Pulp Products	gpd of Avg. Process Flow	676	493					
3200, 30X0	Heavy Manufacturing: Misc.	Industrial		Pharmaceutical Prod. Mfg.	gpd of Avg. Process Flow	150-2,500	32-840					
3200, 30X0	Heavy Manufacturing: Misc.	Industrial		Pipe Cutting and Threading	gpd of Avg. Process Flow	290	550					
3200, 30X0	Heavy Manufacturing: Misc.	Industrial		Plating Plant (Industrial)	gpd of Avg. Process Flow	10	39-10,000					
3200, 30X0	Heavy Manufacturing: Misc.	Industrial		Railroad Equipment Repair & Mfg.	gpd of Avg. Process Flow	180	280					
3200, 30X0	Heavy Manufacturing: Misc.	Industrial		Rendering Plants	gpd of Avg. Process Flow	2,213	1,453					
3200, 30X0	Heavy Manufacturing: Misc.	Industrial		Shipbuilding & Repair	gpd of Avg. Process Flow	180	280					
3200, 30X0	Heavy Manufacturing: Misc.	Industrial		Soaps, Cleaning Preparations, Perfume	gpd of Avg. Process Flow	298	599					
3200, 30X0	Heavy Manufacturing: Misc.	Industrial		Tanning	gpd of Avg. Process Flow	350-2,500	390-3,900					

ASSIGNMENT OF AMALGAMATED SYSTEM SEWAGE GENERATION FACTORS TO COUNTY USE CODES

Code	County Use Classification Description	Additional County Descriptor	Applicable LA SFC Use Category	LA Sewage Generation Factors			Amalgamated System Sewage Generation Factors		
				SGF In GPD	BOD (mg/l)	SS (mg/l)	SGF In GPD	BOD (mg/l)	SS (mg/l)
3200, 30X0	Heavy Manufacturing; Misc. Industrial		Textiles	gpd of Avg. Process Flow	170-440	38-185			
3200, 30X0	Heavy Manufacturing; Misc. Industrial		Tire Mfg. & Servicing	gpd of Avg. Process Flow	298	599			
3200, 30X0	Heavy Manufacturing; Misc. Industrial		Truck & Trailer Mfg.	gpd of Avg. Process Flow	180	280			
3200	Heavy Manufacturing						?	?	290
33X0	Warehousing, Distribution, Storage		COLD STORAGE; NO SALES STORAGE; BUILDING/WAREHOUSE	20 /1000 GR.SQ.FT.	150	150			
33X0	Warehousing, Distribution, Storage		STORAGE; SELF STORAGE BLDG.	20 /1000 GR.SQ.FT.	150	150			
33X0	Warehousing, Distribution, Storage		Storage; Building/Warehouse	gpd of Avg. Process Flow	150	150			
33X0	Warehousing, Distribution, Storage		WAREHOUSE	20 /1000 GR.SQ.FT.	150	150			
33X0	Warehousing, Distribution, Storage		WAREHOUSE W/ OFFICE	SFC = sum of SFC's 20 /1000 GR.SQ.FT.	150	150			
33X0, 39X0	Warehousing, Distribution, Storage						20 /1000 GR.SQ.FT.		150
3400	Food Processing, Meat		Food Processing: Egg	gpd of Avg. Process Flow	2,213	1,453			
3400	Food Processing, Meat		Food Processing: Fish	gpd of Avg. Process Flow	2,213	1,453			
3400	Food Processing, Meat		Food Processing: Meat	gpd of Avg. Process Flow	2,213	1,453			
3400	Food Processing, Meat		Food Processing: Poultry	gpd of Avg. Process Flow	2,213	1,453			
3400	Food Processing, Meat		Meat Packer	gpd of Avg. Process Flow	2,213	1,453			
3400	Food Processing, Meat						?	?	2,213
3400	Food Processing, Meat								1,453
3410	Food Processing, Beverage		Beverage Mfg.	gpd of Avg. Process Flow	541	130			
3410	Food Processing, Beverage		Breweries	gpd of Avg. Process Flow	1,870	1,200			
3410	Food Processing, Beverage		Distilleries	gpd of Avg. Process Flow	1,870	1,200			
3410	Food Processing, Beverage		Wineries	gpd of Avg. Process Flow	1,870	1,200			
3410	Food Processing, Beverage						?	?	?
3420	Food Processing, Other		Candy Mfg. & Confectioners	gpd of Avg. Process Flow	2,213	1,453			
3420	Food Processing, Other		DAIRY	Avg. Process Flow gpd of Avg. Process Flow	2,369	922			
3420	Food Processing, Other		Dairy Products Mfg.	gpd of Avg. Process Flow	2,369	922			

ASSIGNMENT OF AMALGAMATED SYSTEM SEWAGE GENERATION FACTORS TO COUNTY USE CODES

Code	County Use Classification Description	Additional County Descriptor	Applicable LA SFC Use Category	LA Sewage Generation Factors			Amalgamated System Sewage Generation Factors		
				SGF in GPD	BOD (mg/l)	SS (mg/l)	SGF in GPD	BOD (mg/l)	SS (mg/l)
3420	Food Processing, Other	DAIRY: BARN		Avg. Process Flow gpd of Avg. Process Flow	2,213	1,453			
3420	Food Processing, Other	Food Processing: Citrus		gpd of Avg. Process Flow	2,213	1,453			
3420	Food Processing, Other	Food Processing: Dried Fruit		gpd of Avg. Process Flow	2,213	1,453			
3420	Food Processing, Other	Food Processing: Fruit		gpd of Avg. Process Flow	2,213	1,453			
3420	Food Processing, Other	Food Processing: Olives		gpd of Avg. Process Flow	2,213	1,453			
3420	Food Processing, Other	Food Processing: Pickles		gpd of Avg. Process Flow	2,213	1,453			
3420	Food Processing, Other	Oil: Olive		gpd of Avg. Process Flow	2,213	1,453			
3420	Food Processing, Other	Oil: Vegetable FOOD PROCESSING PLANT (DOMESTIC)		gpd of Avg. Process Flow	2,213	1,453			
34X0	Food Processing Plants	FOOD PROCESSING PLANT (INDUSTRIAL)		80 /1000 GR.SQ.FT.	150	150			
34X0	Food Processing Plants	Misc.: Food Products		Avg. Process Flow gpd of Avg. Process Flow	2,213	1,453			
3420	Food Processing, Other				2,213	1,453	?	?	2,213 1,453
3600	Motion Picture, Radio and Television Industries								
3600	Motion Picture Studios, Radio & TV Transmission Facilities	STUDIO: RECORDING STUDIO: FILM /TV - AUDIENCE VIEWING ROOM		80 /1000 GR.SQ.FT.	150	150			
3600, 3510	Motion Picture Studios, Radio & TV Transmission Facilities	STUDIO: FILM /TV - FILM PROCESS.MACHINE SHOP (INDUSTRIAL)		4 /SEAT Avg. Process Flow	150	150			
3600, 3510	Motion Picture Studios, Radio & TV Transmission Facilities	STUDIO: FILM /TV - INDUSTRIAL USE (DOMESTIC)		80 /1000 GR.SQ.FT.	150	150			
3600, 3510	Motion Picture Studios, Radio & TV Transmission Facilities	STUDIO: FILM /TV - REGULAR USE - INDOOR FILMING AREA		80 /1000 GR.SQ.FT. gpd of Avg. Process Flow	150	150			
3600, 3510	Motion Picture Studios, Radio & TV Transmission Facilities	Studio:Film/TV-Industrial Film Process		100 Flow	160	60			
35X0	Motion Picture, Radio and Television Industries						80 /1000 GR.SQ.FT.		150 150
3600	Lumber Yards								
				gpd of Avg. Process Flow	298	599			
				gpd of Avg. Process Flow	298	599			
				gpd of Avg. Process Flow	298	599			

ASSIGNMENT OF AMALGAMATED SYSTEM SEWAGE GENERATION FACTORS TO COUNTY USE CODES

Code	County Use Classification Description	Additional County Descriptor	LA Sewage Generation Factors				Amalgamated System Sewage Generation Factors			
			Applicable LA SFC Use Category	SGF in GPD	BOD (mg/l)	SS (mg/l)	SGF in GPD	BOD (mg/l)	SS (mg/l)	
			Insecticide Mfg.	gpd of Avg. Process Flow	298	599				
			Latex & Rubber Products	gpd of Avg. Process Flow	298	599				
			Oil Producers	gpd of Avg. Process Flow	84	105				
			Oil Refineries	gpd of Avg. Process Flow	84	105				
			Oil: Fuel & Heating	gpd of Avg. Process Flow	84	105				
			Oil: Lubricating	gpd of Avg. Process Flow	700	300				
			Oil: Mfg. & Packaging	gpd of Avg. Process Flow	84	105				
			Oil: Mfg. & Packing	gpd of Avg. Process Flow	84	105				
			Oil: Mineral	gpd of Avg. Process Flow	84	105				
			Oil: Reclaimed	gpd of Avg. Process Flow	84	105				
			Oil: Re-refined	gpd of Avg. Process Flow	84	105				
			Plastics	gpd of Avg. Process Flow	298	599				
			Wax Mfg.	gpd of Avg. Process Flow	298	599				
3720	Mineral Processing - Petrol Refinery, Chemical Plant				?	?		?	?	
4000-5900	Farm, Forest, Desert, etc.				0 /1000 GR.SQ.FT.	0		0	0	
6000	Recreation Facilities									
6110	Movie Theatres, Drive Ins		THEATER: CINEMA	4 /SEAT	150	150				
6110	Movie Theatres, Drive Ins		THEATER: DRIVE-IN	10 /VEHICLE	150	150				
6120	Legitimate Theatre		THEATER: LIVE/MUSIC/OPERA	4 /SEAT	150	150				
61X0	Theaters							4 /SEAT	150	150
6200	Open, Night Clubs?									
6300	Bowling Alleys		BOWLING FACILITY: ARCADE/BAR/RESTAURANT/DANCIN G							
6300	Bowling Alleys		BOWLING ALLEY: ALLEY, LANES & LOBBY AREA	80 /1000 GR.SQ.FT.	150	150				

SFC = Sum of  
SFC's for all areas,  
based on individual  
SGF's

ASSIGNMENT OF AMALGAMATED SYSTEM SEWAGE GENERATION FACTORS TO COUNTY USE CODES

Code	County Use Classification	Description	Additional County Descriptor	Applicable LA SFC Use Category	LA Sewage Generation Factors				Amalgamated System Sewage Generation Factors				
					SGF in GPD	BOD (mg/l)	SS (mg/l)		SGF in GPD	BOD (mg/l)	SS (mg/l)		
69X0	Skating Rinks				150	150							
6300	Bowling Alleys; Skating Rinks				?	1000 GR.SQ.FT.	150	150					
6400	Clubs, Lodge Halls, Fraternal Organizations			LODGE HALL	4 /SEAT		150	150	4 /SEAT	150	150		
6500	Auditoriums, Stadiums, Amphitheatres			AUDITORIUM	4 /SEAT	gpd of Avg. Process	150	150					
6500, 8844	Auditoriums, Stadiums, Amphitheatres, Sports stadiums			Sports Stadium/Arena	gpd of Avg. Process		150	150					
67X0	Race Tracks, Horse Stable - Private,			Racetrack,	Flow		150	150					
6500, 67X0, 8844	Auditoriums, Stadiums, Amphitheatres, Race Tracks, Sports stadiums			ARCAD - VIDEO GAMES POOL HALL (NO ALCOHOL)	80 /1000 GR.SQ.FT.		150	150	?	?	150	150	
6510	Amusement Facilities				80 /1000 GR.SQ.FT.		150	150					
6510	Amusement Facilities				80 /1000 GR.SQ.FT.		150	150					
6640	Dance Halls												
8847	Amusement Ride												
8849	Youth Facility												
6510, 6540, 8847	Amusement Facilities				80 /1000 GR.SQ.FT.		150	150	80 /1000 GR.SQ.FT.	150	150		
6520	Commercial Swimming, Pools, Schools			SWIMMING POOL (Commercial, with backwash filters)	Avg. Backwash Flow								
6530	Gymnasiums, Health Spas with Showers			GYMNASIUM - BASKETBALL, VOLLEYBALL	250 /1000 GR.SQ.FT.		150	150					
6530	Gymnasiums, Health Spas with Showers			HEALTH CLUB/SPA	800 /1000 GR.SQ.FT.		150	150					
6530	Gymnasiums, Health Spas with Showers			SPA/JACUZZI (Commercial, with backwash filters)	Avg. Backwash Flow		150	150					
6530	Gymnasiums, Health Spas with Showers			TANNING SALON, WITHIN A HEALTH SPA/CLUB	800 /1000 GR.SQ.FT.		150	150					
6530	Tennis Courts, Clubs, Pro Shops												
6550	Tennis Courts, Clubs, Pro Shops												
8843	Public Swimming Pool												
6520, 6530, 6550, 884	Gymnasiums, Health Spas with Showers; Tennis Courts, Clubs, Pro Shops; Commercial Swimming Pools, Schools; Public Swimming Pools								?	?	150	150	
3													
7100	Churches			CHAPEL, FIXED SEAT	4 /SEAT		150	150					



ASSIGNMENT OF AMALGAMATED SYSTEM SEWAGE GENERATION FACTORS TO COUNTY USE CODES

Code	County Use Classification	Description	Additional County Descriptor	Applicable LA SFC Use Category	LA Sewage Generation Factors				Amalgamated System Sewage Generation Factors			
					SGF in GPD	BOD (mg/l)	SS (mg/l)	SGF in GPD	BOD (mg/l)	SS (mg/l)		
7100	Churches	Churches		CHURCH: FIXED SEAT	4 /SEAT	150	150	4 /SEAT	150	150		
7100	Churches	Churches										
7000	Schools and Colleges	Schools and Colleges										
7200	Private Schools	Private Schools		CHURCH SCHOOL: DAY CARE/ELEM	8 /OCCUPANT	130	100					
7200	Private Schools	Private Schools		CHURCH SCHOOL: ONE DAY USE	200 /1000 GR.SQ.FT.	130	100					
7200	Private Schools	Private Schools		DANCE STUDIO	80 /1000 GR.SQ.FT.	150	150					
7200	Private Schools	Private Schools		SCHOOL: ARTS/DANCING/MUSIC	80 /1000 GR.SQ.FT.	130	100					
7200	Private Schools	Private Schools		SCHOOL: DAY CARE CENTER	8 /CHILD	130	100					
7200	Private Schools	Private Schools		SCHOOL: MARTIAL ARTS	80 /1000 GR.SQ.FT.	130	100					
7200	Private Schools	Private Schools		SCHOOL: NURSERY-DAY CARE	8 /CHILD	130	100					
7200	Private Schools	Private Schools		SCHOOL: SPECIAL CLASS	8 /STUDENT	130	100					
7200, 8833, 8830	Elementary; Public School; General	Elementary; Public School; General		SCHOOL: ELEMENTARY/JR. HIGH	8 /STUDENT	130	100					
7200, 8833, 8830	Elementary; Public School; General	Elementary; Public School; General		SCHOOL: KINDERGARTEN	200 /1000 GR.SQ.FT.	130	100					
7200, 8833, 8830	General, Day-Care and Elementary Schools	General, Day-Care and Elementary Schools						8 /STUDENT	130	100		
8832	Public High Schools	Public High Schools		SCHOOL: HIGH SCHOOL	12 /STUDENT	130	100					
8832	Public High Schools	Public High Schools		SCHOOL: TRADE OR VOCATIONAL	12 /STUDENT	130	100					
8832	Public High Schools	Public High Schools		SCHOOL: TRAINING	12 /STUDENT	130	100					
8832	Secondary Schools	Secondary Schools						12 /STUDENT	130	100		
7300, 7000, 7600, 780	Colleges, Universities	Colleges, Universities		SCHOOL: UNIVERSITY/COLLEGE	18 /STUDENT	130	100					
0, 7900, 8831	Colleges, Universities	Colleges, Universities		SCHOOL: STADIUM, PAVILION	4 /SEAT	150	150					
7300, 7000, 7600, 780	Colleges, Universities	Colleges, Universities						18 /STUDENT	130	100		
0, 7900, 8831	Colleges, Universities	Colleges, Universities										
7400	Hospitals	Hospitals		HOSPITAL	75 /BED	250	100					
7400	Hospitals	Hospitals		HOSPITAL: CONVALESCENT	75 /BED	250	100					
7400	Hospitals	Hospitals		HOSPITAL: PSYCHIATRIC	75 /BED	215	205					
7400	Hospitals	Hospitals		HOSPITAL: SURGICAL	450 /BED	250	100					
7400	Hospitals	Hospitals		Medical Lab in Hospital	gpd of Avg. Process Flow	339	151					
7400	Hospitals	Hospitals						75 /BED	250	100		
								Industrial?				

ASSIGNMENT OF AMALGAMATED SYSTEM SEWAGE GENERATION FACTORS TO COUNTY USE CODES

Code	County Use Classification Description	Additional County Descriptor	Applicable LA SFC Use Category	LA Sewage Generation Factors		Amalgamated System Sewage Generation Factors	
				SGF in GPD	BOD (mg/l) SS (mg/l)	SGF in GPD	BOD (mg/l) SS (mg/l)
7410	Convalescent Hospitals, Nursing Homes			75 /BED	250 100	75 /BED	250 100
7500	Homes for Aged and others		REST HOME				
7410,7500	Homes for Aged and others						
7600	Open						
7710	Mortuaries, Funeral Homes		Mortuaries; Embalming MORTUARY: CHAPEL MORTUARY: EMBALMING MORTUARY: LIVING AREA	gpd of Avg. Process Flow 4 /SEAT 5 /7 GR. SQ. FT. 80 /1000 GR. SQ. FT.	800 800 150 150 800 800 215 205		
7710	Mortuaries, Funeral Homes		MORTUARY: CHAPEL/LIVING AREA/EMBALMING	SFC=Sum of SFC's for all areas, based on individual SGF's		?	?
7710	Mortuaries, Funeral Homes					800	800
7800,7900	Open						
8000,8100	Utilities						
8200	Mining						
8300	Petroleum and Gas						
8400	Pipelines, Canals						
8500	Rights of Way						
8700	Rivers, Lakes and Quarries						
3710	Mineral Processing - Cement,						
7700	Rock & Gravel						
880V	Cemeteries, Mausoleums						
8810	Government - Vacant Land						
8811,8812	Government - Rights of Way, General Government - Street, Road, Highway; Future Street						
8813,8814	Government - Power Transmission Lines, Sewers, Utilities						
8850	Government - Water Related Facilities						
8852-3	Government - Boat Slip, Boat Mooring						
8855-9	Government - Flood Control Drainage; Irrigation Related; Dam; Reservoir, Tank, Underground Storage; Watershed						





October 28, 2009

Brittany Burkhead  
Christopher A. Joseph & Associates  
25031 W. Avenue Stanford, Suite 50  
Santa Clarita, CA 91355

**SUBJECT: Santa Monica College, Santa Monica, CA**

Dear Customer:

This is to advise that the subject project is located within the service territory of the Southern California Edison Company (SCE) and that the electrical loads of the project are within parameters of projected load growth which SCE is planning to meet in this area.

Our total system demand is expected to continue to increase annually; however, excluding any unforeseen problems, our plans for new distribution resources indicate that our ability to serve all customers' loads in accordance with our rules and tariffs will be adequate during the decade of the 2000's.

Current conservation efforts on the part of SCE customers have resulted in energy savings. Optimization of conservation measures in this project will contribute to the overall energy savings goal.

If you have any additional questions, please feel free to call me at (310) 315-3215.

Sincerely,



Beatrice Coleman  
Customer Service Planner

BJC



## Brittany Burkhead

---

**From:** Karen Ginsberg [Karen.Ginsberg@SMGOV.NET]

**Sent:** Tuesday, November 24, 2009 4:04 PM

**To:** Brittany Burkhead

**Cc:** Barbara Stinchfield

**Subject:** response to questions re: parks and recreational facilities and SMC facilities master plan update(2009)

Hi Brittany:

Thanks for emailing another copy of your letter regarding Santa Monica's parks and recreational facilities as they relate to the SMC Facilities master plan update and DEIR . Here are the responses to your questions.

1. Which parks and/or recreational facilities would serve the Proposed Project?

Santa Monica has 26 parks in its system. The parks that are geographically closest to SMC's campuses include Memorial Park, Virginia Avenue Park, Stewart Street Park, Schader Park, Airport Park and Clover Park. Additionally the Santa Monica Swim Center which is a city operated facility is located on the main SMC campus.

2. Are the parks and recreational facilities included in your response to Question 1 adequately meeting the Project area's current demand for parks and recreational facilities?

Santa Monica's parks are generally heavily used by its residents and visitors and there is not a park located within ¼ of each resident in the city. Additional parkland would be of benefit to the community.

3. Would the parks and recreational facilities included in your response to Question 1 be able to meet the Proposed Projects's demand for parks and recreational facilities?

Based upon the project description provided in your letter, it is unclear what the proposed project's demand for parks and recreational facilities would be in terms of peak use periods etc. Therefore, please rely on my answer to question 2.

4. Does the City of Santa Monica have any plans to develop new parks or recreational facilities or expand existing parks or recreational facilities within the vicinity of the Project Site (in accordance with the Parks and Recreation Master Plan and the Open Space Element0?

Capital improvement plans call for the expansion of Memorial Park to include the adjacent 2.9 acre parcel with frontage on Colorado Avenue.

5. Would payment of the Quimby Fees and/or Park Fees be required? If so, would these fees eliminate or reduce the Proposed Project's potential impacts on City recreational and park facilities?

SMC would not be subject to the City of Santa Monica's Parks and Recreation Facilities Tax (Chapter 6.80 SMMC)

Please do not hesitate to contact me should you have further questions.

Sincerely,

Karen Ginsberg  
Assistant Director  
Community & Cultural Services  
City of Santa Monica





## Brittany Burkhead

---

**From:** Myesha Jones [Myesha.Jones@SMGOV.NET]  
**Sent:** Monday, November 30, 2009 3:44 PM  
**To:** Brittany Burkhead  
**Cc:** Kim Braun  
**Subject:** Santa Monica College Master Plan Questions  
**Attachments:** CEQA.docx; Approved\_CD\_Facilities.pdf; Approved\_Haulers.pdf; Waste Management Plan Form 08-06.pdf

Hello Brittany,

Please find attached a response to your questions regarding the Santa Monica College Master Plan Update 2009. Feel free to email me should you have any questions.

Myesha Jones  
Business Assistant  
Public Works – Solid Waste Management Division  
2500 Michigan Avenue  
Santa Monica, CA 90404-4012  
Tel: 310.458.2201 ext 5706  
Fax: 310.264.7750  
<http://www.smgov.net/swm>



# Santa Monica College Facilities Master Plan 2009 Update Request for Solid Waste Service Information

- Will the project be served by a landfill with sufficient permitted capacity to accommodate the project's solid waste disposal needs?

The City of Santa Monica does not own or operate a landfill. Neither does the City provide large roll off containers for such a project. The City requires that all C&D projects complete a Waste Management Plan and select a City approved hauler to provide refuse and recycling services. With that, the contracted hauler is restricted to specific landfill or recycling processing sites (See Attached).

- Will the project comply with federal, state, and local statutes and regulations related to solid waste?

Locally, the City of Santa Monica requires projects of this size, to submit a Waste Management Plan. This plan outlines the steps to be taken to meet the diversion of 65% of materials created during the construction process from landfills. (See Attached) The information provided in the attachment outlines how to calculate the project's diversion rate as well as how to complete the plan.

## 1. Which private hauler provides solid waste services, including collection and disposal, to the Project Site?

PUBLIC WORKS DEPARTMENT (PWR) Solid Waste Management Division	
<b>APPROVED SOLID WASTE PRIVATE HAULERS</b> in Good Standing as of October 21, 2009	
<ul style="list-style-type: none"> <li>• Using a Private Hauler not on this list or approved by the City will result in permit revocation.</li> <li>• Dumpsters may not be placed blocking alleys, driveways, water vaults, or water meters.</li> <li>• Dumpsters not for fiscal year covering July 1, 2009 through June 30, 2010.</li> </ul>	
1. A. Best & Best San-Well Disposal, 911 S. Main Avenue, Morristown, CA 95040 Phone: (530) 726-4056	29. Franco Development Services, Inc., 218 W. Florence Blvd., #307, Monterey Park, CA 91754 Phone: (626) 222-4540
2. Andco Recycling Company, Inc., 2300 W. Placent Avenue, Los Angeles, CA 90047 Phone: (323) 296-7774	30. Paul Carter Recycling Co., 100 Redondo Dr., Los Angeles, CA 90001 Phone: (310) 417-5211
3. ASES, P.O. Box 60206, City of Industry, CA 91719 Phone: (626) 336-3838	31. G.A. Industries Waste Management - Oxnard, 8081 Tulving Avenue, Sun Valley, CA 91352 Phone: (818) 761-5887
4. Alexander Construction & Hauling, 18333 National Avenue, Gardena, CA 90248 Phone: (310) 538-4774	32. P.A. J. Construction Company, Inc., 6075 Park Avenue, Whittier, CA 90601 Phone: (562) 400-8440
5. Alexander Integrated Services, Inc., 1622 East Copp St., Wilmington, CA 90744 Phone: (310) 622-1188	33. B.S.T. & Sons, 9209 Ray Avenue, South Gate, CA 90260 Phone: (323) 347-8920 rsm@bostsons.com
6. American Recycling, Inc., 2489 Lee Ave. South El Monte, CA 91733 Phone: (626) 842-2929	34. J.C. Bullard & Co., 1848 Sherman Way, Suite 111, Redlands, CA 91338 Phone: (618) 346-2222 amrc@jcbullard.com
7. Arner Construction Co., 9900 San Fernando Road, Pacoima, CA 91331 Phone: (818) 852-2008	35. J.M. Harding & Engineers, Inc., 8423 Miramar Street, Sim Valley, CA 91063 Phone: (626) 861-9113 jmh@jmh.com
8. Arner Disposal Service Inc., P.O. Box 2917 La Puente, CA 91746 Phone: (626) 328-2292	36. JMM Contractors, P.O. Box 248, Sun Valley, CA 91383 Phone: (818) 761-5887
9. Allied Waste Services (formerly B.F.J.), 14805 S. San Pedro Street, Gardena, CA 90248 Phone: (310) 323-0763	37. J. Padilla Inc., 1211 Foothill Blvd., Sylmar, CA 91342 Phone: (818) 696-6264 jpadilla@allied.com
10. Allied Waste Services, 13008 Montebello Avenue, Montebello, CA 90248 Phone: (310) 538-5989	38. J. Ramirez Services, 11875 Freeman Avenue, Hawthorne, CA 90331 Phone: (310) 684-1463 jramirez@jramirez.com
11. Central City Enterprises, 8936 Richland Avenue, Norwalk, CA 90550 Phone: (562) 346-2000	39. Key Disposal Inc., 1141 E. Taylor Avenue, Norwalk, CA 90640 Phone: (562) 721-8441
12. Central Enterprises, 2830 E. Rico Blvd., Rancho Palms Verdes, CA 90276 Phone: (310) 748-8473	40. Levers' Roll Off, Inc., 4836 Grape Street, Pico Rivera, CA 90660 Phone: (562) 271-2713
13. Central Enterprises, 2830 E. Rico Blvd., Rancho Palms Verdes, CA 90276 Phone: (310) 748-8473	41. Manant Expedite Trucking, P.O. Box 760, Lynwood, CA 90262 Phone: (562) 846-2723
14. Commercial Waste Services, Inc., P.O. Box 620, Montebello, CA 90640 Phone: (310) 298-4818	42. Manantia Disposal, 7142 Laurel Avenue, Van Nuys, CA 91406 Phone: (818) 701-7000 info@manantia.com
15. Conner Construction Services, P.O. Box 620, Montebello, CA 90640 Phone: (310) 298-4818	43. M. Pacific Trucking, Inc., P.O. Box 992, Hayward, CA 94520-0992 Phone: (510) 351-7474
16. Conner Construction Services, 12006 Montague Street, Pacoima, CA 91331 Phone: (818) 841-8889	44. M.A. Disposal Service, P.O. Box 1798, Montebello, CA 90640 Phone: (323) 888-5088 maw@madisposal.com
17. Crown Disposal Co., P.O. Box 1081, Sun Valley, CA 91382 Phone: (818) 761-0273	45. M. Pacific Trucking, Inc., 141 W. Duane Road, Montebello, CA 90640 Phone: (510) 351-7474
18. D'Angelo Ruben Disposal, P.O. Box 1727, Montebello, CA 90640 Phone: (626) 706-1243 d@rubendisposal.com	46. M. Pacific Trucking, Inc., 487 Arroyo Avenue, San Fernando, CA 91340 Phone: (818) 399-3600
19. Direct Disposal, 9901 Van Meter Ave., PMS 228, Huntington Beach, CA 92649 Phone: (714) 961-1800	47. Pacific Transport CO., 12000 Butler Ave., Granada Hills, CA 91344 Phone: (818) 399-3600
	48. Quality Waste Services Inc., 3634 E. Whittier Blvd., Los Angeles, CA 90023 Phone: (323) 294-2224
	49. S.A. Construction & Disposal, Inc., 1127 E. Florence Avenue, Inglewood, CA 90302 Phone: (310) 420-2648
	50. S.A. Construction & Disposal, Inc., P.O. Box 144, Agoura Hills, CA 91301-0144 Phone: (818) 876-4267
	51. S.A. Construction & Disposal, Inc., 1127 E. Florence Avenue, Inglewood, CA 90302 Phone: (310) 420-2648
	52. S.A. Construction & Disposal, Inc., 1127 E. Florence Avenue, Inglewood, CA 90302 Phone: (310) 420-2648
	53. S.A. Construction & Disposal, Inc., 1127 E. Florence Avenue, Inglewood, CA 90302 Phone: (310) 420-2648
	54. S.A. Construction & Disposal, Inc., 1127 E. Florence Avenue, Inglewood, CA 90302 Phone: (310) 420-2648
	55. S.A. Construction & Disposal, Inc., 1127 E. Florence Avenue, Inglewood, CA 90302 Phone: (310) 420-2648
	56. S.A. Construction & Disposal, Inc., 1127 E. Florence Avenue, Inglewood, CA 90302 Phone: (310) 420-2648
	57. S.A. Construction & Disposal, Inc., 1127 E. Florence Avenue, Inglewood, CA 90302 Phone: (310) 420-2648
	58. S.A. Construction & Disposal, Inc., 1127 E. Florence Avenue, Inglewood, CA 90302 Phone: (310) 420-2648
	59. S.A. Construction & Disposal, Inc., 1127 E. Florence Avenue, Inglewood, CA 90302 Phone: (310) 420-2648
	60. S.A. Construction & Disposal, Inc., 1127 E. Florence Avenue, Inglewood, CA 90302 Phone: (310) 420-2648
	61. S.A. Construction & Disposal, Inc., 1127 E. Florence Avenue, Inglewood, CA 90302 Phone: (310) 420-2648
	62. S.A. Construction & Disposal, Inc., 1127 E. Florence Avenue, Inglewood, CA 90302 Phone: (310) 420-2648
	63. S.A. Construction & Disposal, Inc., 1127 E. Florence Avenue, Inglewood, CA 90302 Phone: (310) 420-2648
	64. S.A. Construction & Disposal, Inc., 1127 E. Florence Avenue, Inglewood, CA 90302 Phone: (310) 420-2648
	65. S.A. Construction & Disposal, Inc., 1127 E. Florence Avenue, Inglewood, CA 90302 Phone: (310) 420-2648
	66. S.A. Construction & Disposal, Inc., 1127 E. Florence Avenue, Inglewood, CA 90302 Phone: (310) 420-2648
	67. S.A. Construction & Disposal, Inc., 1127 E. Florence Avenue, Inglewood, CA 90302 Phone: (310) 420-2648
	68. S.A. Construction & Disposal, Inc., 1127 E. Florence Avenue, Inglewood, CA 90302 Phone: (310) 420-2648
	69. S.A. Construction & Disposal, Inc., 1127 E. Florence Avenue, Inglewood, CA 90302 Phone: (310) 420-2648
	70. S.A. Construction & Disposal, Inc., 1127 E. Florence Avenue, Inglewood, CA 90302 Phone: (310) 420-2648
	71. S.A. Construction & Disposal, Inc., 1127 E. Florence Avenue, Inglewood, CA 90302 Phone: (310) 420-2648
	72. S.A. Construction & Disposal, Inc., 1127 E. Florence Avenue, Inglewood, CA 90302 Phone: (310) 420-2648
	73. S.A. Construction & Disposal, Inc., 1127 E. Florence Avenue, Inglewood, CA 90302 Phone: (310) 420-2648
	74. S.A. Construction & Disposal, Inc., 1127 E. Florence Avenue, Inglewood, CA 90302 Phone: (310) 420-2648
	75. S.A. Construction & Disposal, Inc., 1127 E. Florence Avenue, Inglewood, CA 90302 Phone: (310) 420-2648
	76. S.A. Construction & Disposal, Inc., 1127 E. Florence Avenue, Inglewood, CA 90302 Phone: (310) 420-2648
	77. S.A. Construction & Disposal, Inc., 1127 E. Florence Avenue, Inglewood, CA 90302 Phone: (310) 420-2648
	78. S.A. Construction & Disposal, Inc., 1127 E. Florence Avenue, Inglewood, CA 90302 Phone: (310) 420-2648
	79. S.A. Construction & Disposal, Inc., 1127 E. Florence Avenue, Inglewood, CA 90302 Phone: (310) 420-2648
	80. S.A. Construction & Disposal, Inc., 1127 E. Florence Avenue, Inglewood, CA 90302 Phone: (310) 420-2648
	81. S.A. Construction & Disposal, Inc., 1127 E. Florence Avenue, Inglewood, CA 90302 Phone: (310) 420-2648
	82. S.A. Construction & Disposal, Inc., 1127 E. Florence Avenue, Inglewood, CA 90302 Phone: (310) 420-2648
	83. S.A. Construction & Disposal, Inc., 1127 E. Florence Avenue, Inglewood, CA 90302 Phone: (310) 420-2648
	84. S.A. Construction & Disposal, Inc., 1127 E. Florence Avenue, Inglewood, CA 90302 Phone: (310) 420-2648
	85. S.A. Construction & Disposal, Inc., 1127 E. Florence Avenue, Inglewood, CA 90302 Phone: (310) 420-2648
	86. S.A. Construction & Disposal, Inc., 1127 E. Florence Avenue, Inglewood, CA 90302 Phone: (310) 420-2648
	87. S.A. Construction & Disposal, Inc., 1127 E. Florence Avenue, Inglewood, CA 90302 Phone: (310) 420-2648
	88. S.A. Construction & Disposal, Inc., 1127 E. Florence Avenue, Inglewood, CA 90302 Phone: (310) 420-2648
	89. S.A. Construction & Disposal, Inc., 1127 E. Florence Avenue, Inglewood, CA 90302 Phone: (310) 420-2648
	90. S.A. Construction & Disposal, Inc., 1127 E. Florence Avenue, Inglewood, CA 90302 Phone: (310) 420-2648
	91. S.A. Construction & Disposal, Inc., 1127 E. Florence Avenue, Inglewood, CA 90302 Phone: (310) 420-2648
	92. S.A. Construction & Disposal, Inc., 1127 E. Florence Avenue, Inglewood, CA 90302 Phone: (310) 420-2648
	93. S.A. Construction & Disposal, Inc., 1127 E. Florence Avenue, Inglewood, CA 90302 Phone: (310) 420-2648
	94. S.A. Construction & Disposal, Inc., 1127 E. Florence Avenue, Inglewood, CA 90302 Phone: (310) 420-2648
	95. S.A. Construction & Disposal, Inc., 1127 E. Florence Avenue, Inglewood, CA 90302 Phone: (310) 420-2648
	96. S.A. Construction & Disposal, Inc., 1127 E. Florence Avenue, Inglewood, CA 90302 Phone: (310) 420-2648
	97. S.A. Construction & Disposal, Inc., 1127 E. Florence Avenue, Inglewood, CA 90302 Phone: (310) 420-2648
	98. S.A. Construction & Disposal, Inc., 1127 E. Florence Avenue, Inglewood, CA 90302 Phone: (310) 420-2648
	99. S.A. Construction & Disposal, Inc., 1127 E. Florence Avenue, Inglewood, CA 90302 Phone: (310) 420-2648
	100. S.A. Construction & Disposal, Inc., 1127 E. Florence Avenue, Inglewood, CA 90302 Phone: (310) 420-2648

The City requires all private haulers that collect and dispose of refuse and recyclables file for a permit to operate in the City. The list pictured above and attached, indicates all registered and permitted Private Haulers.

## 2. Which landfill(s) receive(s) solid waste from the Project Site?

The only materials that are accepted at a landfill would be source separated dirt or mixed inerts (concrete, asphalt, etc.) Contractors are free to use any landfill of their choosing. It is important to ensure that the landfill chosen will help the project meet the required recycling diversion rate. All source separate materials can be delivered to any landfill or recycling center, but the material type delivered and project address must be recorded on the dumping receipt received.

**Santa Monica College Facilities Master Plan 2009 Update  
Request for Solid Waste Service Information**

The attached Waste Management Plan (See WMP- Page 3) lists the following recycling locations (and credited diversion) for the non-landfill disposal of construction and demolition material:

- Community Recycling & Resource Recovery - 80%
- American Waste Industries – 60%
- East Valley Diversion – 65%
- Downtown Diversion – 75%
- California Waste Services –75%
- Interior Removal Specialist, Inc. – 70%
- City owned & operated Recycling & Transfer Station Facility – 80%
- Southern California Disposal – 60%

**3. Would existing landfills be able to accommodate the Proposed Project’s demand for solid waste services?**

The City of Santa Monica is unable to determine the capacity of local landfills. Please contact each potential dumping site directly.

**4. What steps or programs do you recommend be implemented with implementation of the Proposed Project to comply with the California Integrated Waste Management Act of 1989 (AB-939)?**

Please see the attached Waste Management Plan. The plan will assist the contractor in preparing for the hauling and disposal of all materials generated throughout the project.

**5. In order to assess the Proposed Project’s future generation of solid waste, we propose to use the following solid waste generation rates (Source: City of Los Angeles Bureau of Sanitation, “Solid Waste Generation,” 1981). If these rates are not acceptable, please provide us with your recommended rates.**

**CONSTRUCTION PROJECTS - TYPICAL WASTE GENERATION RATES – Updated 3-26-2009**

Material	Residential Multi-Unit Construction		Institutional Low-rise Construction		Commercial Low-rise Construction		Residential Low-rise Construction	
	cu. yd./ 1,000 sq. ft.	tons/1,000 sq. ft.	cu. yd./ 1,000 sq. ft.	tons/1,000 sq. ft.	cu. yd./ 1,000 sq. ft.	tons/1,000 sq. ft.	cu. yd./ 1,000 sq. ft.	tons/1,000 sq. ft.
wood	3.3	0.40	7.0	0.86	5.6	0.68	6.0	0.73
drywall	3.6	0.92	0.9	0.22	0.2	0.05	1.1	0.27
metal	0.2	0.09	0.4	0.21	-	-	-	-
concrete/ asphalt	1.7	1.79	0.7	0.99	-	-	0.04	0.05
corrugated asphalt	-	-	-	-	7.1	0.14	2.4	0.05
other	5.6	1.54	0.2	0.54	1.0	0.27	0.5	0.14
<b>Total</b>	<b>14.4</b>	<b>4.74</b>	<b>9.2</b>	<b>2.82</b>	<b>13.9</b>	<b>1.14</b>	<b>10.04</b>	<b>1.24</b>

**Santa Monica College Facilities Master Plan 2009 Update  
Request for Solid Waste Service Information**

Explanatory note: Waste generation rates vary depending on project type and size, subtrade efficiency, accurate material estimation, on-site materials storage procedures and product packaging.

Estimate the volumes or quantities of materials generated on the site by multiplying the floor area of your project with the generation rates listed for the different materials.

Please see <http://www.ciwmb.ca.gov/WasteChar/WasteGenRates/default.htm> for information on more up to date numbers on waste generation.

**7. Please provide any recommendations that might reduce any potential solid waste impacts associated with the Proposed Project.**

It is imperative that all staff working on the project is fully aware of the desire to divert as much material from the landfill as possible. Via salvaging material for use on other projects and ensuring that all recyclable materials find themselves into the correct bin, the impact on the environment for all C&D projects can be greatly reduced.



PUBLIC WORKS DEPARTMENT (PW) Solid Waste Management Division

CONSTRUCTION & DEMOLITION (C&D) WASTE MANAGEMENT PLAN

Plan Check #: \_\_\_\_\_

1. GENERAL PROJECT INFORMATION:

Over-the-Counter Permit? [ ] Yes [ ] No City-Sponsored Project? [ ] Yes [ ] No

Type of Project: [ ] Demolition [ ] New Construction [ ] Alteration [ ] Addition

Project Description: \_\_\_\_\_

Project Address: \_\_\_\_\_

Project Sq. Ft.: \_\_\_\_\_ Project Valuation: \_\_\_\_\_

Estimated total cubic yards to be hauled from this location: \_\_\_\_\_

Estimated Project: Start Date: \_\_\_\_\_ Completion Date: \_\_\_\_\_

Legal Owner (please print): \_\_\_\_\_ Phone No.: \_\_\_\_\_

2. FORM SUBMISSION:

I hereby attest that the information provided on this form (pp. 1-5) is complete and accurate.

Applicant (please print): \_\_\_\_\_

Applicant's Signature: \_\_\_\_\_ Date: \_\_\_\_\_

Relation to Project: [ ] Owner [ ] Contractor [ ] Architect [ ] Permit Expeditor

Company Name (if Applicable): \_\_\_\_\_

Address: \_\_\_\_\_

Phone No.: \_\_\_\_\_ Fax No.: \_\_\_\_\_ E-Mail: \_\_\_\_\_

(for Staff only)

Waste Management Plan (WMP) Reviewed By: \_\_\_\_\_

Date: \_\_\_\_\_ WMP Approved: [ ] Yes [ ] No

If not approved, describe reviewer's actions: \_\_\_\_\_

NOTE TO APPLICANT: Any proposed changes to an approved Waste Management Plan must be resubmitted and pre-approved by City staff in order to ensure return of the performance security deposit.

## C&D WASTE MANAGEMENT PLAN

Project Address: \_\_\_\_\_

### 3. STRATEGIES FOR WASTE RECYCLING AND/OR DISPOSAL:

For each of the following categories of recycling and disposal activities, describe those strategies you plan to utilize for the project at the address above.

<b>1.</b>	<b>Salvage &amp;/or Source Separation*:</b>			Yes	No	
1a	Do you plan to salvage materials from this project prior to construction or demolition activities?					
1b	If "yes," please list the items that will be salvaged (e.g., doors, windows, jambs, casing, toilets, sinks, other fixtures, hardwoods, wood siding, cabinets and shelving, carpet and pad, bricks, acoustical ceiling, lights, fans, ceramic roof tiles, structural materials, reusable lumber, etc.)?	1.				
2.						
3.						
4.						
5.						
1c	Do you plan to source separate any materials on this project for delivery to a recycling facility (e.g., separation of items such as wood, concrete, metal into separate bins)? This would also include materials that will be recycled at a landfill as daily cover or as landfill roadbase.			Yes	No	
1d	Reasons for Not Salvaging (e.g., Non-salvageable fixtures, No salvage value or market exists for materials, etc.)  _____  _____  _____	Materials	Hauler	Facility		
<b>2.</b>	<b>On-site reuse:</b>			Yes	No	
2a	Do you plan any on-site reuse activities for this project (e.g., reuse of wood forms from other projects for concrete, on-site crushing of concrete for on-site use, use of reusable containers or pallets for material deliveries, etc.)?					
If "yes," please describe.  _____  _____						
<b>3.</b>	<b>Inert fill use:</b>			Yes	No	
3a	Will any source separated dirt or mixed inerts (i.e., dirt, concrete, asphalt) be delivered to an inert landfill (one that accepts only inert material) or be used for any other non-landfill fill purpose?					
3b	If "yes," please indicate the materials, haulers, and facilities.	Materials	Hauler	Facility		

\*This includes recovering reusable items from remodeling or demolition projects and includes stand-alone items (appliances), easy to remove items such as doors, mantelpieces, and removal of reusable structural items by hand (lumber, wood siding, roof tiles).

## C&D WASTE MANAGEMENT PLAN

Project Address: \_\_\_\_\_

<b>4.</b>	<b>Mixed C&amp;D recycling facilities and diversion rate:</b>			Yes	No
4a	Will any mixed debris be delivered to a mixed C&D recycling facility for mechanical and/or manual separation of recyclables?				
4b	If "yes," identify the facility and hauler who will deliver the material for recycling.	Facility (check one)	X	Hauler	
		Community Recycling & Resource Recovery - 80%			
		American Waste Industries – 60%			
		East Valley Diversion (Looney Bins) – 65%			
		Downtown Diversion (Looney Bins) – 75%			
		California Waste Services – 75%			
		Interior Removal Specialist, Inc. – 70%			
		City owned & operated Recycling & Transfer Station Facility – 80%			
		Southern California Disposal – 60%			
<b>5.</b>	<b>Disposal at a landfill or transfer station:</b>			Yes	No
5a	Will any materials from this project be disposed of at a landfill or transfer station?				
5b	If "yes," identify the haulers who will deliver the disposed debris and the disposal facilities.	Hauler	Facility		
<b>6.</b>	<b>Self-haul:</b>			Yes	No
6a	Will any C&D debris be self-hauled by your company or by subcontractors?				
6b	If "yes," identify which companies will be self-hauling debris and where they will take the materials (refer to definition of "self-haul" in the WRRP Instructions/General Information.	Self Hauler	Facility		
<b>7.</b>	<b>Educational strategies:</b>				
	Describe how you plan to inform your workers and any subcontractors of and ensure participation in your diversion goals and Waste Management Plan activities.				
	_____				
	_____				
	_____				
	_____				

## C&D WASTE MANAGEMENT PLAN

Project Address: \_\_\_\_\_

### 4. ESTIMATE OF RECYCLING AND/OR DISPOSAL ACTIVITIES`:

Summarize the information provided in Part Three (pages 2-3) of this Waste Management Plan on the following chart.

Type of Material	Type of Activity (check box)				Total Quantities (In Tons)*	Total Recycled (In Tons)*	Total Disposed (In Tons)*	Facility Used (list specific names of recycling facilities, transfer stations, landfills, etc.)	Method of Transport (Self Haul, debris box, other?)
	Recycle - to Facility	Recycle - Salvage**	Recycle - On-Site Reuse	Dispose - to Facility					
<b>Mixed Materials***</b>									
Mixed C&D Materials									
Mixed Inerts									
<b>Separated Materials</b>									
Asphalt									
Brick									
Concrete									
Dirt/Clean Fill									
Lumber									
Roofing Materials									
Metals									
Sheetrock									
Yard Trimmings									
<b>Other Salvageable Materials/Items****</b>									
<b>Other</b>									
<b>Totals:</b>									

\*See Conversion Table (page 5) to convert cubic yards to tons.

\*\*Estimate in pounds where necessary and convert to partial tons -- see Conversion Table (page 5).

\*\*\*Divide the "Total Quantities" tonnages for all mixed materials between the "Total Recycled" and "Total Disposed" columns. [For example, if the facility you are using (see C&D Recycling Facilities list) has a 65% diversion rate, and you are sending 10 tons to that facility, "Total Recycled" = 6.5 and "Total Disposed" = 3.5.]

\*\*\*\*See #1b on page 2 for examples of salvageable materials other than those items listed under "Separated Materials" above.

**Estimated Diversion Rate:** \_\_\_\_\_ %\*\*\*\*\*

\*\*\*\*\*Divide tons of waste recycled by total tons of waste recycled and disposed; convert to a percentage.



**C&D WASTE MANAGEMENT PLAN**

**C&D Conversion Table**

Project Address: \_\_\_\_\_

**Complete this page ONLY if there are no scales and you must use volume to weight conversions to calculate recycled or disposed tonnages.**

✓	<b>Check each conversion being used.</b>		
	Mixed C&D Materials	1 cubic yard	= 500 pounds
	Mixed Inerts	1 cubic yard	= 1 ton
	Asphalt, Brick, Concrete, Dirt (separated from other materials)	1 cubic yard	= 1 ton
	Lumber	1 cubic yard	= 150 pounds
	Asphalt Shingles	1 cubic yard	= 419 pounds
	Asphalt/Tar Roofing	1 cubic yard	= 2,919 pounds
	Wood Shake Shingle Roofing	1 cubic yard	= 435 pounds
	Metals	1 cubic yard	= 906 pounds
	Sheetrock	1 cubic yard	= 394 pounds
	Yard Trimmings	1 cubic yard	= 108 pounds

**Other Salvaged Items**

<b>Salvaged Items</b>	<b>Estimated Pounds ÷ 2000</b>	<b>=</b>	<b>Tons</b>
Example: Cabinets, doors, windows, toilets, etc.	100 lbs. ÷ 2000	=	.05

If you believe you have justification for using a different conversion than above, please explain below.

---



---



---



---



---



---



---



**ENVIRONMENTAL & PUBLIC WORKS  
MANAGEMENT DEPARTMENT (EPWM)  
Solid Waste Management Division**

**CONSTRUCTION & DEMOLITION (C&D)  
APPROVED RECYCLING FACILITIES**

<p align="center"><b>METAL</b></p> <p><i>All of the companies listed below accept both ferrous &amp; non-ferrous metals, unless otherwise noted.</i></p>	<p align="center"><b>MIXED C&amp;D RECYCLERS</b></p> <p><i>Process mixed C&amp;D to extract recyclables</i></p>	<p align="center"><b>SALVAGED ITEMS (USED BUILDING MATERIALS)</b></p>
<p>A&amp;S Metal Recycling 2261 E. 15<sup>th</sup> Street Los Angeles, CA 90021 213-623-9443</p>	<p>Community Recycling &amp; Resource Recovery, Inc. 9189 DeGarmo Ave. Sun Valley, CA 91352 818-767-0675 Diversion Rate: 80%</p>	<p>Architectural Details 512 S. Fair Oaks Ave. Pasadena, CA 91105 626-844-6670 <i>Wide range of <b>pre-1940</b> materials accepted</i></p>
<p>Alpert &amp; Alpert Iron &amp; Metal 1815 Soto St. Los Angeles, CA 90023 or 21930 Wilmington Carson, CA 90810 323-265-4040 or 323-775-6791</p>	<p>American Waste Ind. (AWI) 1121 Pendleton St. Sun Valley, CA 91352 818-768-1492 Diversion Rate: 60%</p>	<p>Freeway Building Materials 1124 S. Boyle Ave. Los Angeles, CA 90023 323-261-8904</p>
<p>Atlas Iron &amp; Metal Co. Los Angeles, CA 90002 323-566-0213 <i>ferrous metal only</i></p>	<p>East Valley Diversion (Looney Bins) 11616 ½ Sheldon St. Sun Valley, CA 91352 818-768-7197 D.R. (65%)</p>	<p>Santa Fe Wrecking &amp; Salvage 1600 South Santa Fe Ave. Los Angeles, CA 90021 213-623-3119</p>
<p>Kramer Metals 1000 E. Slauson Ave. Los Angeles, CA 90011 323-233-4201</p>	<p>Downtown Diversion (Looney Bins) 2424 E. Olympic Blvd., Bldg. 3 Los Angeles, CA 90021 323-538-5998 D.R. (60%)</p>	<p>Scavenger's Paradise 5453 Satsuma Ave. N. Hollywood, CA 91501 323-877-7945</p>
<p>A-1 Metals Recycling, Inc. 8250 Tujunga Ave. Sun Valley, CA 91352 818-767-4388</p>	<p>California Waste Svcs. (CWS) 621 West 152<sup>nd</sup> St. Gardena, CA 90247 323-538-5998 D.R. (75%)</p>	
	<p>Southern California Disposal 1908 Frank Street Santa Monica, CA. 90404 310-828-6444 D.R. (60%)</p>	
	<p>Interior Removal Specialist, Inc. 9309 Rayo Ave. South Gate, CA 90280 323-357-6900 D.R. (70%)</p>	
	<p>City of Santa Monica Recycling &amp; Transfer Station Facility 2401 Delaware Ave. Santa Monica, CA 90404 310-829-7323 D.R. (80%)</p>	

## CONSTRUCTION & DEMOLITION APPROVED RECYCLING FACILITIES

<b><i>INERT MATERIAL</i></b>	<b><i>DIRT</i></b>	<b><i>WOOD</i></b>
Hanson Aggregates 24 <sup>th</sup> South of Michigan, Santa Monica 800-300-6120 <i>Clean asphalt &amp; concrete, minimal metal mesh/rebar</i>	Potrero Canyon 15145 Pacific Coast Hwy. Pacific Palasades, CA 90272 310-459-9166 Fax 310-459-6518	Recycled Wood Products 1313 E. Phillips Blvd. Pomona, CA 91766 909-868-6882
Vulcan Materials Company 3200 San Fernando Road Los Angeles, CA 90065 323-258-2777	Strathern Landfill 8230 Tujunga Ave. Sun Valley, CA 91352 818-768-9292	North Hills Recycling, Inc. 11700 Blutcher Ave. Granada Hills, CA 91345 818-831-7980
Chandler's P.O. Box 295 Lomita, CA 90717 310-784-2900	Chandler's P.O. Box Box 295 Lomita, CA 90717 310-784-2900	
Valley Base Materials P.O. Box 579 Sun Valley, CA 91353 818-767-3088		
Arcadia Reclamation, Inc. 12321 Lower Azuza Road Arcadia, CA. 91006 909-625-1049		
Nu-Way Arrow Reclamation 1270 E. Arrow Highway Irwindale, CA. 91706 626-305-5308		
<b><i>CARDBOARD</i></b>	<b><i>BRICK &amp; ROOFING TILES</i></b>	<b><i>CARPET &amp; CARPET PADDING</i></b>
Allan Company 2411 Delaware Ave. Santa Monica CA 90404 310-453-9677	Bourget Bros. Building Mat'ls 1636 11 <sup>th</sup> St. Santa Monica, CA 90404 310-450-6556 <i>purchase of used mission roof tile</i>	Recycling Center 12030 Sherman Way N. Hollywood, CA 91605 818-503-9454 <i>foam carpet padding (no rubber) &amp; "nylon six" carpeting</i>

### General Notes:

- Call first for the most up-to-date information on hours, services, pricing, and material specifications (types, minimum quantities, and condition of acceptable materials).
- Many facilities will accept materials separated for recycling as well as provide hauling services (check with City staff for approval on all hauling services).



**DEPARTMENT OF PUBLIC WORKS**  
Solid Waste Management Division

**APPROVED SOLID WASTE PRIVATE HAULERS**  
In Good Standing as of December 23, 2008

- **Using a Private Hauler not on this list or approved by the City will result in permit revocation.**
- **Dumpsters may not be placed blocking alleys, driveways, water vaults, or water meters.**
- **Effective list for fiscal year covering July 1, 2008 through June 30, 2009.**

- 1. 44 West Construction, Inc.,** 274 Muerdago Road, Topanga, CA. 90290  
Phone: (310) 455-2517
- 2. A Rent-A-Bin/Serv-Well Disposal,** 901 S. Maple Avenue, Montebello, CA 90640  
Phone: (323) 726-4056
- 3. A-1 Disposal & Roll Off, Inc.,** 2930 E. 12th Street, Los Angeles, CA 90023  
Phone: (323) 268-5203
- 4. Active Recycling Company, Inc.,** 2000 W. Slauson Avenue, Los Angeles, CA. 90047  
Phone: (323) 295-7774
- 5. ADS,** P.O. Box 60009, City of Industry, CA 91716  
Phone: (626) 336-3636
- 6. Alexander Demolition & Hauling,** 15533 Patronella Avenue, Gardena, CA 90249  
Phone: (310) 538-4774
- 7. American Integrated Services, Inc.,** 1502 East Opp St., Wilmington, CA. 90744  
Phone: (310) 522-1168
- 8. American Wrecking, Inc.** 2459 Lee Ave. South El Monte, CA 91733  
Phone: (626) 643-2029
- 9. Arrow Concrete Cutting, Inc.** 9960 San Fernando Road, Pacoima, CA 91331  
Phone: (818) 652-2086
- 10. Arrow Disposal Service Inc.,** P.O. Box 2917 La Puente, CA 91746  
Phone: (626) 336-2255
- 11. Allied Waste Services (formerly B.F.I.),** 14905 S. San Pedro Street, Gardena, CA 90248  
Phone: (310) 323-0763
- 12. California Waste Services,** 621 West 152<sup>nd</sup> St., Gardena, CA 90247  
Phone: (310) 538-5998
- 13. Central City Enterprises,** 5935 Rickenbacker Avenue, Riverside, CA 92504  
Phone: (951) 343-2000
- 14. Central Reclamation,** 2930 E. Pico Blvd., Los Angeles, CA 90023  
Phone: (310) 748-8473
- 15. Chris' Hauling,** 29540 Bernice Dr., Rancho Palos Verdes, CA 90275  
Phone: (310) 962-1944
- 16. Commercial Waste Services, Inc.,** P.O. Box 820, Montebello, CA 90640  
Phone: (800) 947-8224
- 17. Consolidated Disposal Service,** 12949 Telegraph Rd., Santa Fe Springs, CA 90670  
Phone: (800) 299-4898
- 18. Cordova Construction Service,** 12506 Montague Street, Pacoima, CA 91331  
Phone: (818) 896-0509
- 19. Crown Disposal Co.,** P.O. Box 1081, Sun Valley, CA 91352  
Phone: (818) 767-0675

- 20. D' Angelus Hudson Disposal**, P.O. Box 1727, Montebello, CA 90640  
Phone: (626) 705-1343. d.adgajain@worldnet.org
- 21. Direct Disposal**, 5901 Warner Ave. PMB 229. Huntington Beach, CA 92649  
Phone: (323) 262-1604
- 22. Franco Development Services, Inc.**, 215 W. Pomona Blvd., #307, Monterey Park, CA 91754  
Phone: (323) 722-4040
- 23. Full Circle Recycling Co.**, 1920 Randolph St. Los Angeles, CA 90001  
Phone: (310) 417-8211
- 24. IRS T.I. Demo**, 9309 Rayo Avenue, South Gate, CA. 90280  
Phone: (323) 357-6900. irsdemo@irsdemo.com
- 25. J.C. Rolloff L.L.C.**, 18645 Sherman Way, Suite 111, Reseda, CA 91335  
Phone: (818) 345-2228. binrentals@sbc.global.com
- 26. J&L Hauling & Disposal, Inc.**, 5416 Mildred Street, Simi Valley, CA. 93063  
Phone: (805) 581-9781. jnlhnd@aol.com
- 27. J&M Containers**, P.O. Box 249, Sun Valley, CA 91353  
Phone: (818) 764-2616. jmcontainers@yahoo.com
- 28. J. Padilla Inc.**, 12618 Foothill Blvd., Sylmar, CA. 91342  
Phone: (818) 899-6364. jpidemo@aol.com
- 29. Jimenez Services**, 11875 Freeman Avenue, Hawthorne, CA 90301  
Phone: (310) 864-1483. laura\_marmolejo@hotmail.com
- 30. Key Disposal Inc.**, 1141 S. Taylor Avenue, Montebello, CA 90640  
Phone: (323) 721-5441
- 31. Looney Bins**, 12153 Montague Street, Pacoima, CA 91331  
Phone: (818) 485-8200. neil@looneybins.com
- 32. Manuel Tejada Trucking**, P.O. Box 760, Lynwood, CA 90262  
Phone: (310) 864-0232. mtejedatrking@hotmail.com
- 33. Metropolis Disposal**, 7740 Burnet Avenue, Van Nuys, CA 91405  
Phone: (818) 901-2020. kim@cutdemo.com
- 34. NASA Disposal Service**, P.O. Box 1755, Montebello, CA 90640  
Phone: (323) 888-0388. nuwayrolloffservice.com
- 35. Nu-Way Roll-Off Service**, 145 W. Duarte Road, Monrovia, CA. 91016  
Phone: (626) 358-8007
- 36. Padilla Company Inc.**, 667 Arroyo Avenue, San Fernando, CA 91340  
Phone: (818) 361-9500
- 37. Perez Transport CO.**, 12000 Blucher Ave., Granada Hills, CA 91344  
Phone: (818) 366-3500
- 38. Quality Waste Services Inc.**, 3534 E. Whittier Blvd., Los Angeles, CA 90023  
Phone: (323) 264-2236
- 39. R.H. Cox Construction**, P.O. Box 66188, Los Angeles, CA 90066-0188  
Phone: (310) 842-8100
- 40. R.J.'s Demolition & Disposal**, 1137 E. Florence Avenue, Inglewood, CA. 90302  
Phone: (310) 420-2648
- 41. Rock n' Roll-Off, Inc.**, P.O. Box 144, Agoura Hills, CA. 91376-0144  
Phone: (818) 991-2323
- 42. Rodas Company**, 2412 Buckingham Road, Los Angeles, CA. 90016  
Phone: (323) 588-2883
- 43. Rogma Construction Services, Inc.**, 1328 Willow St., Los Angeles, CA 90013  
Phone: (213) 620-1144
- 44. Sakaida & Sons Trucking**, P.O. Box 7412, Van Nuys, CA 91409  
Phone: (818) 881-5257
- 45. S.D.M. Hauling**, 11806 Braddock Drive, Culver City, CA 90230

Phone: (310) 990-3406

**46. Solomon Transport Service, Inc.**, 2081 Carolwood Drive, Arcadia, CA. 91006

Phone: (888) 723-7241

**47. Southern California Disposal Co.**, P.O. Box 25666, Los Angeles, CA 90025

Phone: (310) 828-6444

**48. Southern California Environ. Inc.**, 25433 Trabuco Rd. #105-409, Lake Forest, CA 92630

Phone: (949) 770-1768

**49. United Pacific Waste (UPW)**, P.O. Box 908, Pico Rivera, CA 90660

Phone: (562) 699-7600

**50. Universal Waste Systems Inc.**, P.O. Box 3038, Whittier, CA 90605

Phone: (562) 941-4900

**51. Waste Management**, 9081 Tujunga Ave, Sun Valley, CA 91352

Phone: (310) 830-7100

**52. Waste Resources, Inc.**, 9109 Miner St., Los Angeles, CA 90002

Phone: (310) 366-7600

**53. West Coast Arborists, Inc**, 2200 E.Via Burton St., Anaheim, CA 92806

Phone: (714) 991-1900

**\*\*Below are hauling companies that have been taken off up-to-date list as of 11/18/2008**

**Angelus Western Paper**, 2474 Porter Street, Los Angeles, CA 90021

Phone: (213) 623-9224

**American Waste Industries**, P.O. Box 2001, Sun Valley, CA 91353

Phone: (818) 768-1492

**Cal Lowbed Service, Inc.**, 4650 Rosedale Lane, Bakersfield, CA 93314

Phone: (661) 588-6410

**G.I. Industries**, 195 West Los Ave., Simi Valley, CA 93015

Phone: (805) 955-4318 [jrees@aol.com](mailto:jrees@aol.com)

**Haul-Away Rubbish Service Co., Inc.** 1205 Date Street, Montebello, CA 90640

Phone: (323) 721-0371. [haulawayrubbish@hotmail.com](mailto:haulawayrubbish@hotmail.com)

**Midwest Environmental Control, Inc.**, P.O. Box 278, Edwards, CA 93523-278

Phone: (661) 258-8060. [nbruhl@mecinc.com](mailto:nbruhl@mecinc.com)

**Pena Trucking**, 11253 Vinedale Street, Sun Valley, CA 91352

Phone: (818) 768-5202

**M. Padilla Trucking, Inc.**, P.O. Box 951062, Mission Hills, CA 91395-3170

Phone: (818) 361-7474

**Milan Disposal**, P.O. Box 370388, Reseda, California 91335. Phone: (818) 882-8807.

[milandisposal@yahoo.com](mailto:milandisposal@yahoo.com).