

Santa Monica College Career & Educational Facilities Master Plan 2009 Update



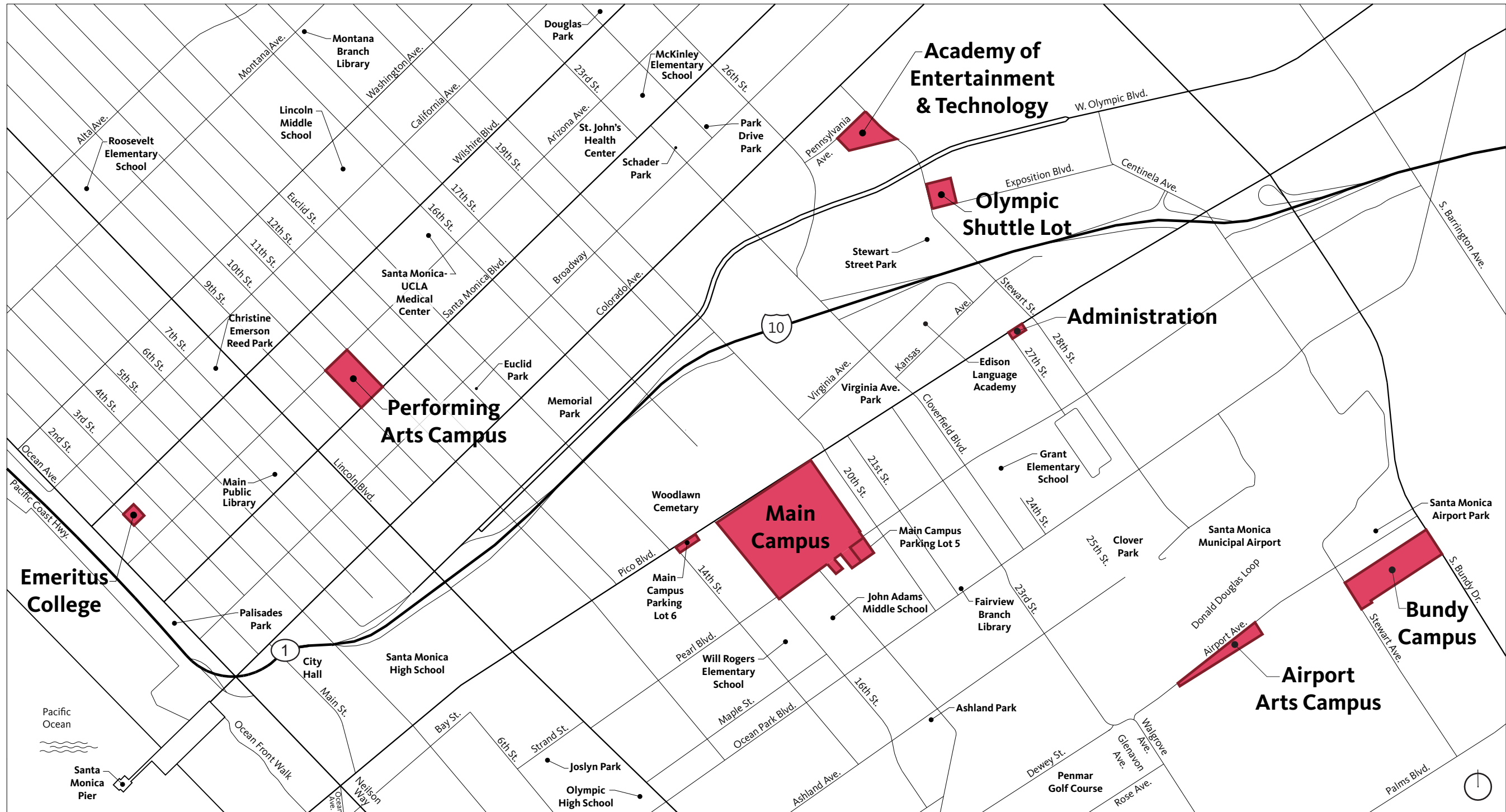
- Description & Programs of Santa Monica College
- Overview of the 1998 Master Plan
- Objectives of the Master Plan 2009 Update
- Benefits of the Master Plan 2009 Update
- Proposed Projects
 - Main Campus
 - Academy of Entertainment & Technology (AET) Campus
 - Olympic Shuttle Lot
 - Performing Arts Campus
- Project Timeline
- Next Steps



“Changing lives in the global community through excellence in education”

- Santa Monica College is an accredited public two-year community college, founded in 1929. It became a separate district in 1970 and began operating with a separately elected Board in 1982.
- The campus system is located on several sites within and adjacent to the City of Santa Monica.
- SMC provides exceptional educational programs that prepare students for successful careers through job training or as preparation for transfer to universities.
- The College offers credit curriculum in about 100 subject areas, which serve about 30,000 students each semester.
- SMC also provides specialized continuing education, dual enrollment, non-credit, and senior programs, along with special programs for the public.





- The Educational Facilities Master Plan, adopted by the Board of Trustees in 1998, is a strong statement of specific strategies to guide the College in meeting the needs of the present and anticipating the demands of the future.
- It is a living document and provides overall development principles, such as encouraging interaction, program adjacencies, a campus design with clear logic, a balance of open space and density, sustainability, the use of technology, a vehicle free interior, parking self-sufficiency, celebrated arrival via public transportation, and developing the campuses as community resources with accessible public amenities.
- The 1998 Master Plan identified a number of projects that have been completed or are in progress. These are: replacement structures for the pool, parking structure, science building, and liberal arts building; a library expansion; a new quad; a consolidated student services building; underground parking; and Pico Boulevard improvements.
- The 1998 Master Plan was amended in 2007 to provide for facilities on the Bundy campus.



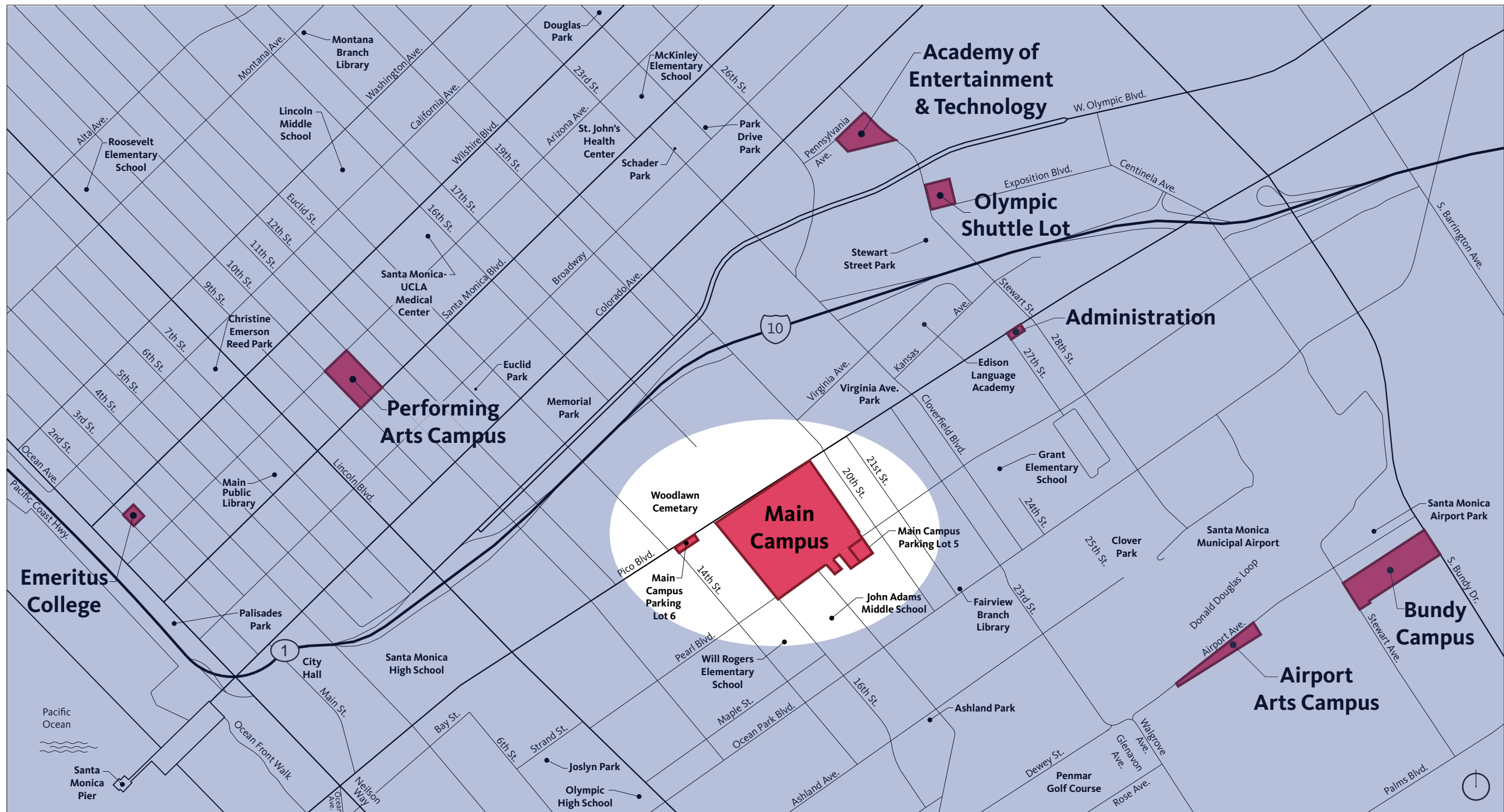
The proposed update incorporates current College facility planning, including Board-approved 5-year capital outlay plans; facility assessment surveys conducted in 2001, 2002, and 2003; projects submitted for State funding; and projects approved by the voters of Santa Monica and Malibu in the bond measure elections of 2002, 2004, and 2008 (Measures U, S, and AA).

The proposed update:

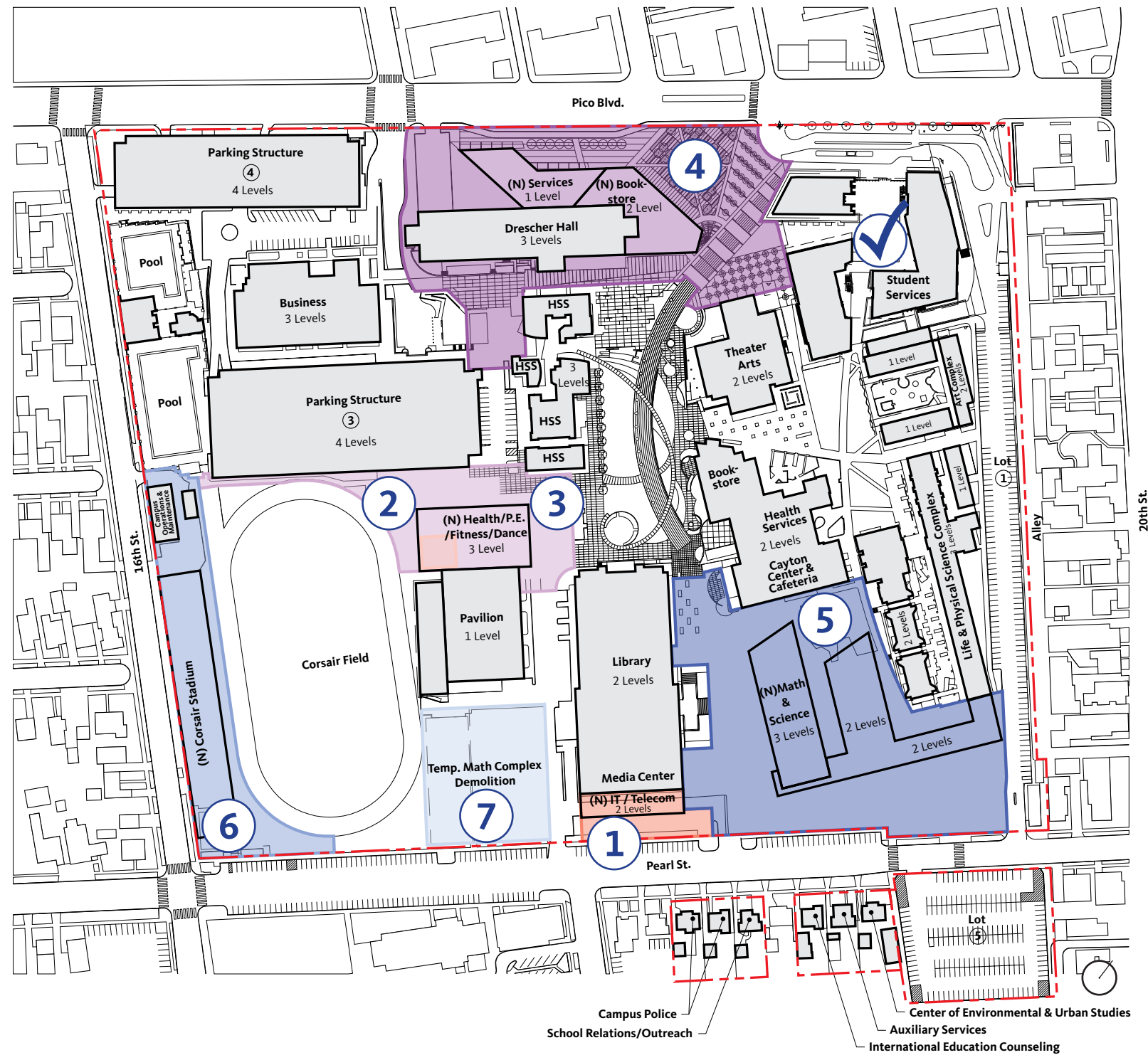
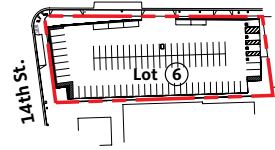
- Identifies options for SMC campus sites with regard to land use, transportation, and sustainability.
 - Provides for long-range development planning at the Olympic Shuttle site.
 - Reduces the planned density and increases the planned open space for the Main campus. It provides for a replacement Physical Education building; a replacement Math and new Science wing building; seismic repair; and further improvements for the Pico Boulevard frontage.
 - Provides for program expansion at the Performing Arts campus in music, art, and public programs, and related parking; and seismic repair.
 - Provides for expansion at the Academy campus to bring together programs in digital arts, media, communication, journalism, and broadcasting, and incorporated parking; and the relocation of the College's radio station KCRW.
- There are no proposed projects at Emeritus College, the Airport Arts campus or the Administration building. The Bundy Campus Master Plan allows for previously approved projects.*

- Assists the College in preparing students for the jobs of the 21st century and competing in a global economy, including enhancing the teaching facilities of math, science and technology.
- Integrates learning, support, and administration facilities, campus services, community services, and public opportunities to create vibrant and walkable campuses.
- Enhances student and faculty interaction.
- Optimizes functional relationships of SMC facilities.
- Creates a balance of the natural environment and built facilities.
- Provides students with an efficient transit system to reduce traffic congestion and fuel consumption.
- Allows for the design of energy and water-efficient buildings.
- Provides for the best possible educational environment and promotes the incorporation of sustainable practices.
- Identifies program improvements for specific projects.
- Assists the College to obtain necessary project-specific approvals.
- Provides the College with a framework to promote design excellence in future projects.







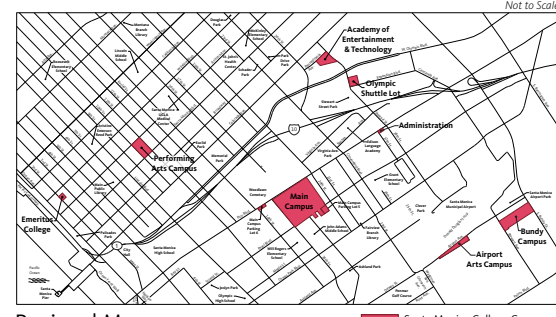
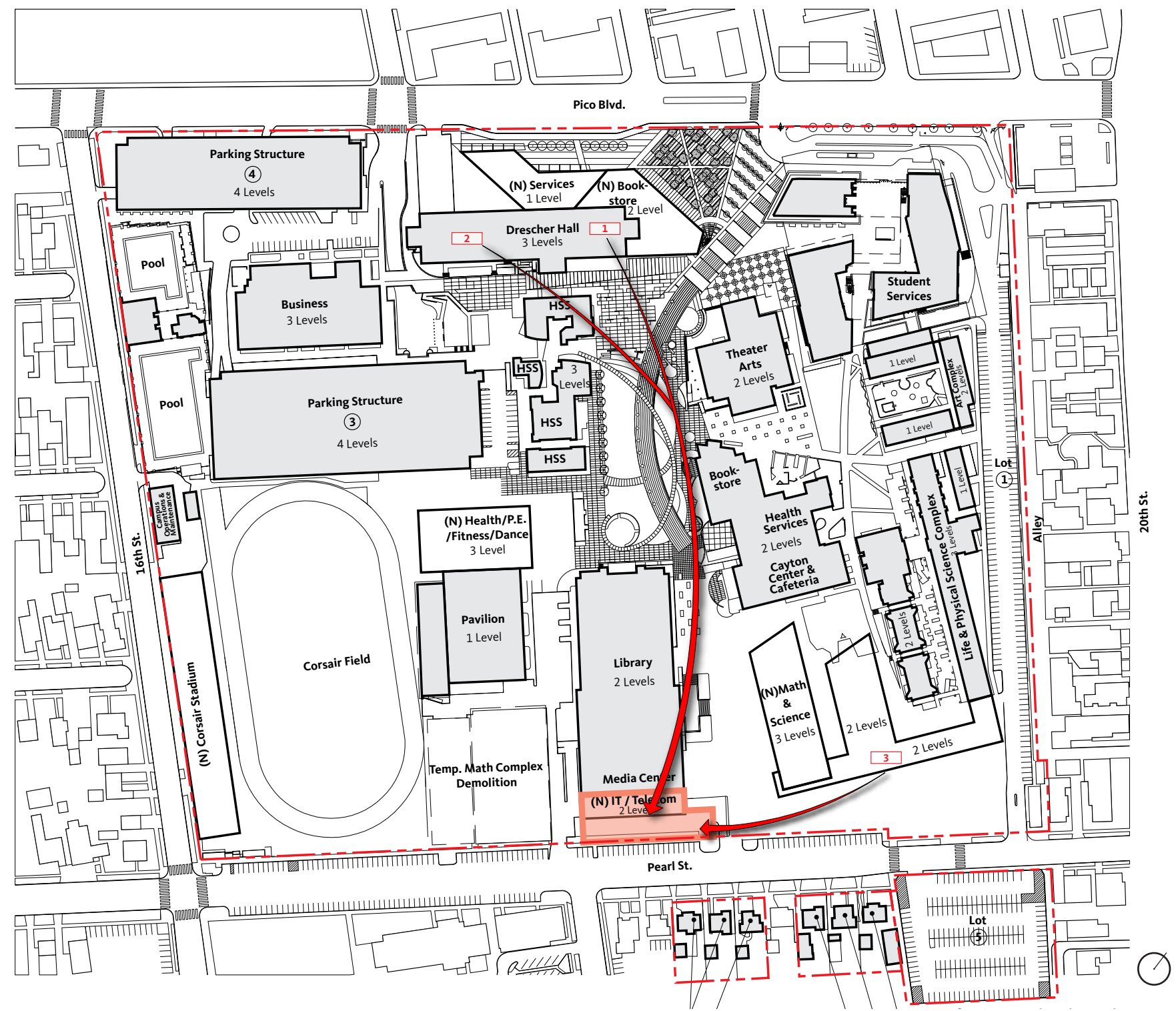
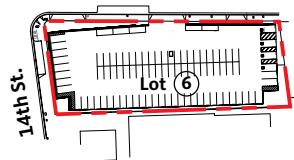


Approved Projects:

- ✓ Student Services (Under Construction)
- ① IT/Telecom Relocation (Needs Board Approval)

Proposed Projects:

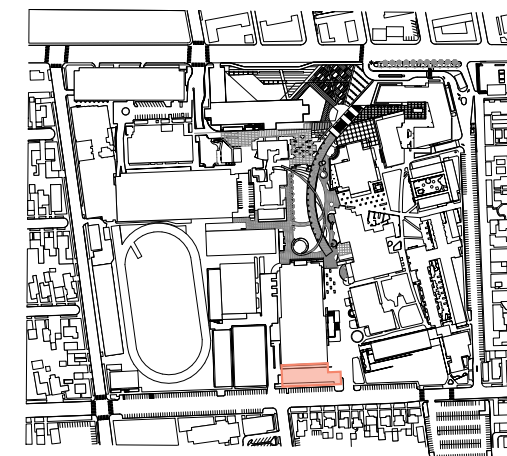
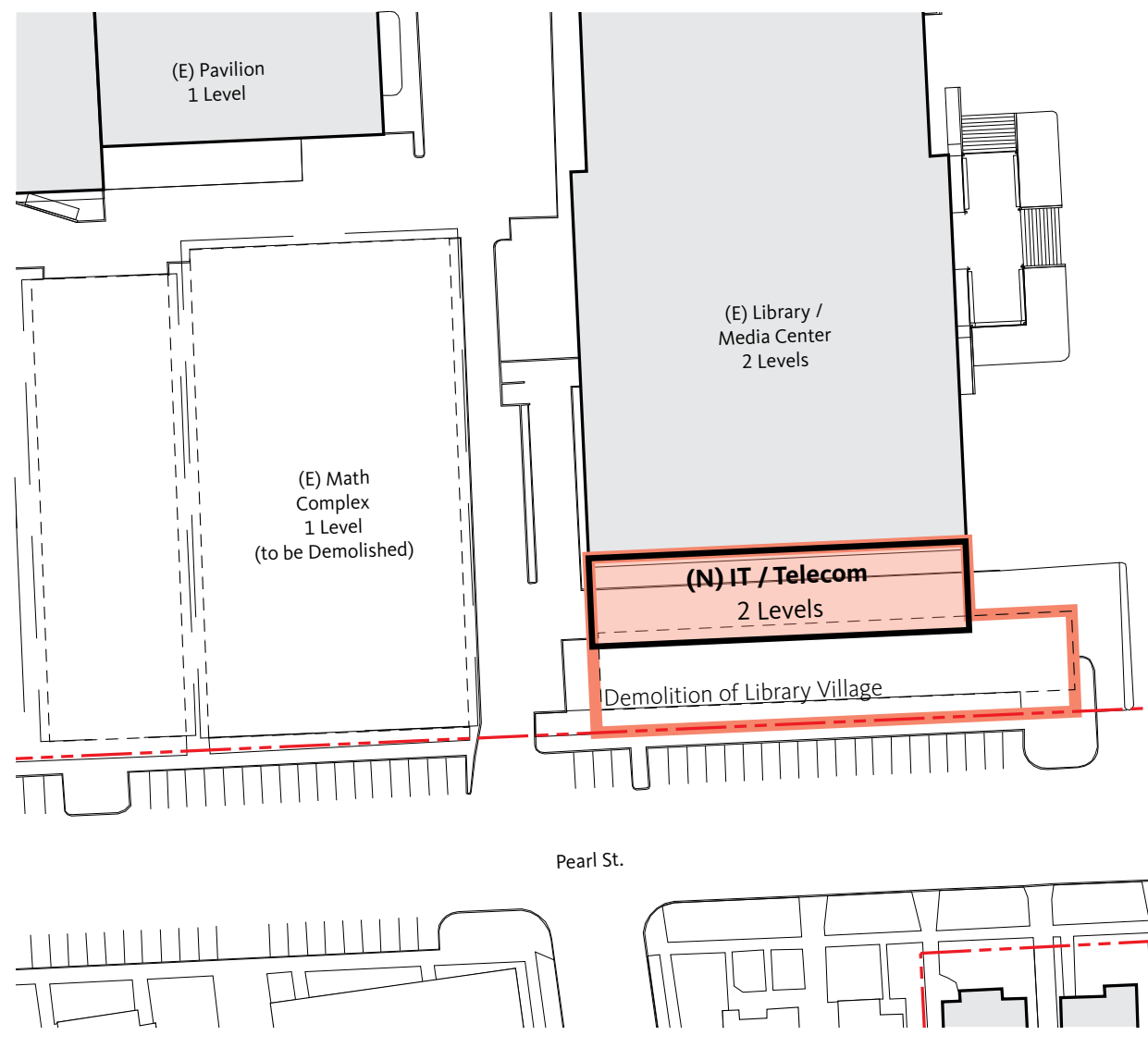
- ② Energy Saving Project - Central Plant
- ③ Health/P.E./Fitness/Dance
- ④ Drescher Hall Modernization & Pico Promenade
- ⑤ Math & Science Extension Replacement
- ⑥ Corsair Stadium/ESL Demolition
- ⑦ Temporary Math Complex Demolition



Regional Map
 Santa Monica College Campuses

IT / Telecom Relocation
 Construction Start: Quarter II 2011

- Relocated Programs:**
- 1 Information Management (From Drescher Hall)
 - 2 Telecom (From Drescher Hall)
 - 3 Mail Room (From Liberal Arts)



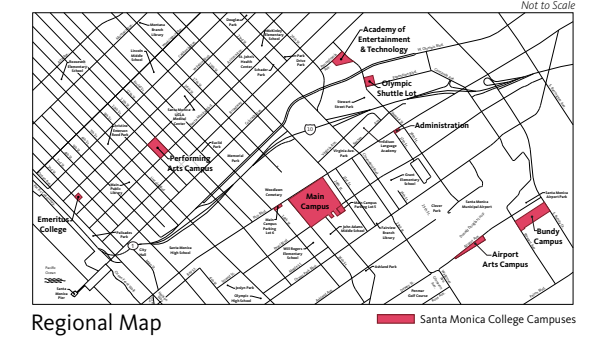
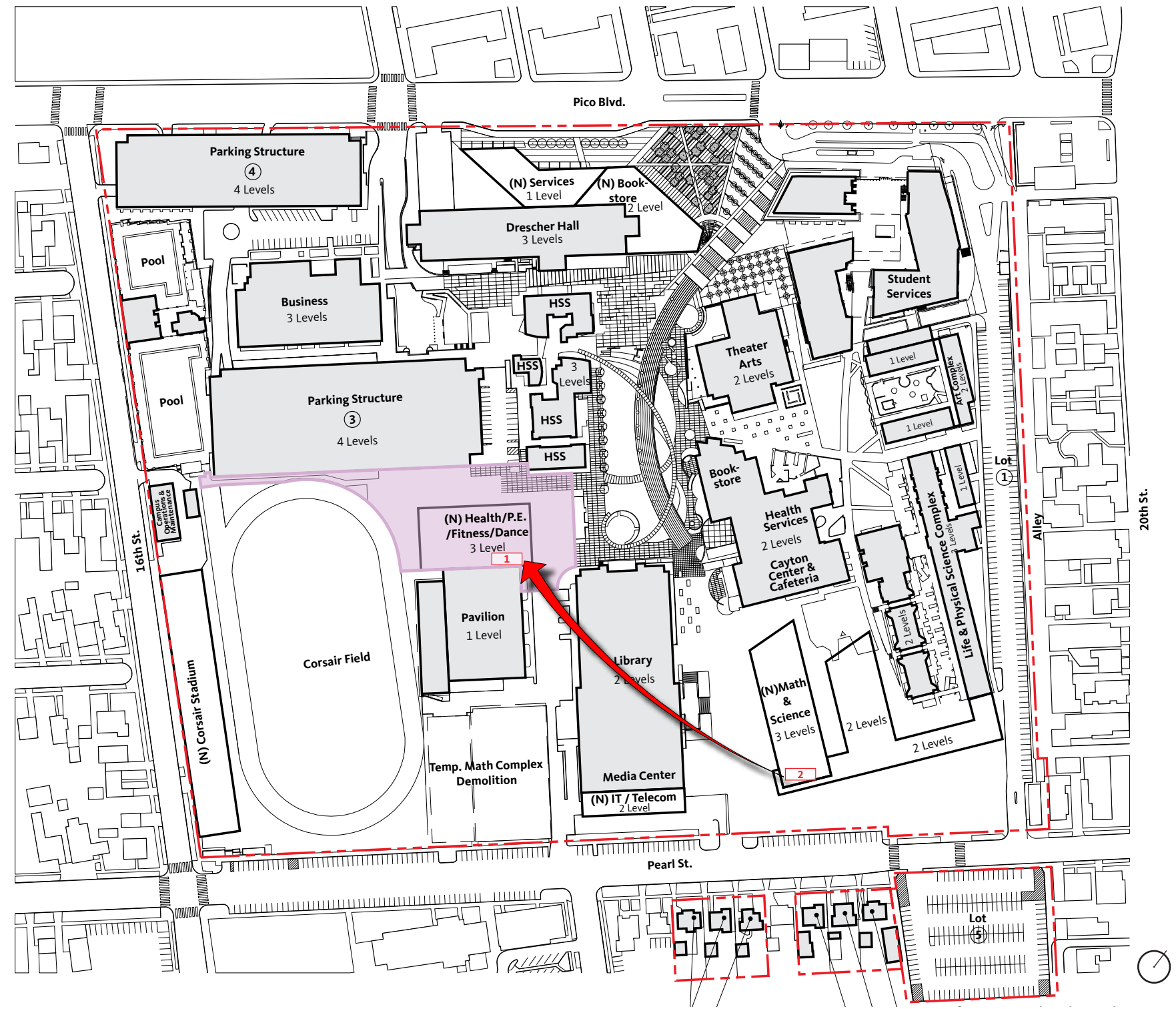
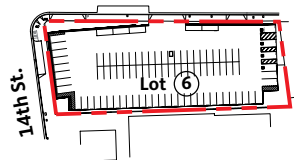
IT/Telecom Relocation



Project Site:	IT/Telecom Relocation
Site Area:	0.34 acres
Bldg to be Demolished (ASF):	4,990 s.f. (approx.)
New Building Area (ASF):	9,230 s.f. (approx.)

Legend

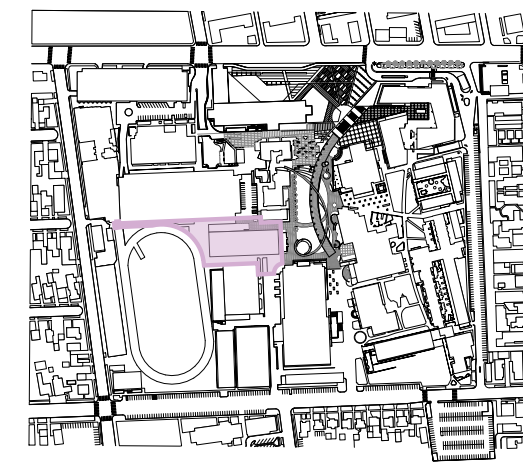
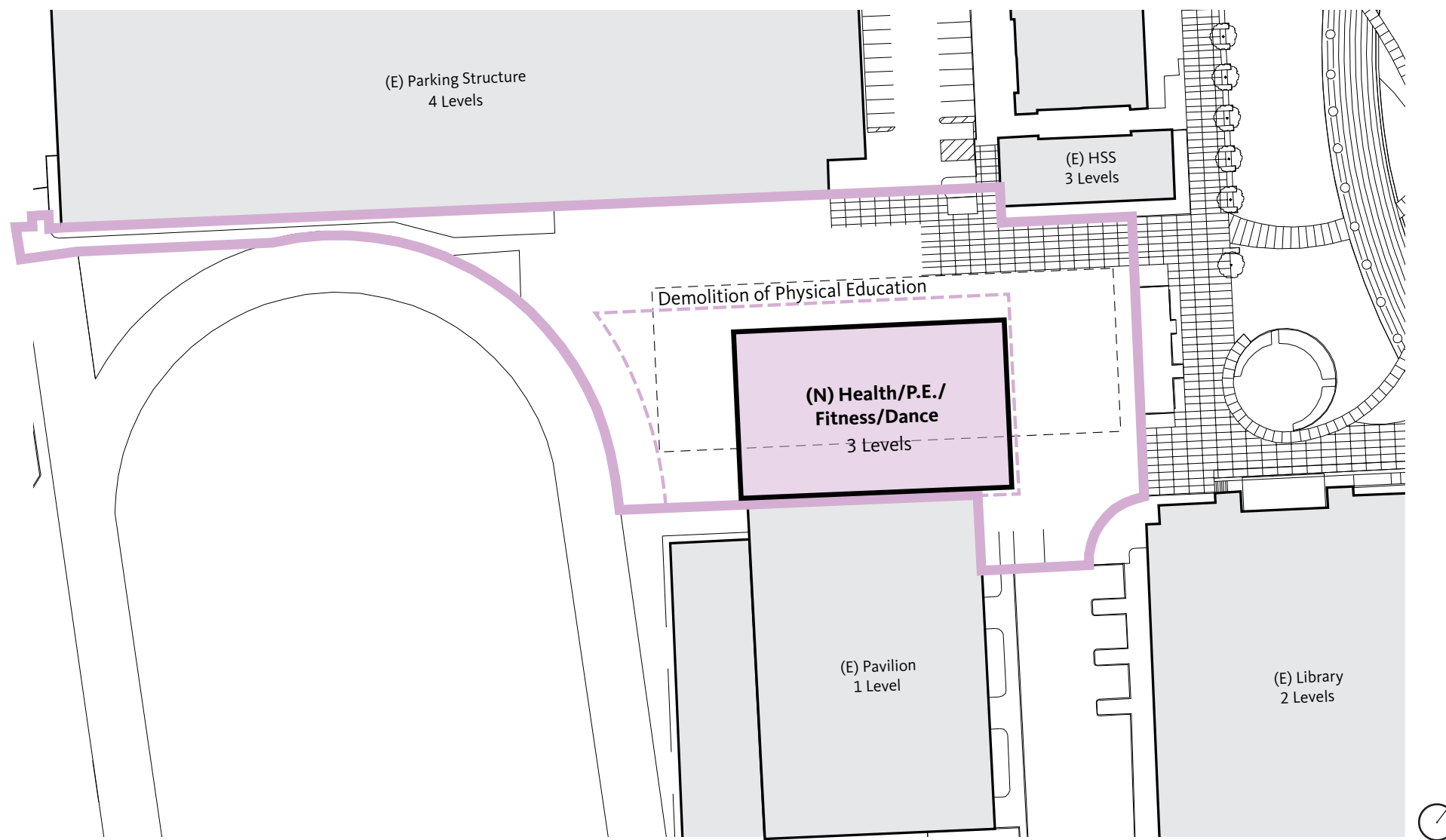
- Project Site
- Property Line
- Potential Footprint
- Building Demolition



Regional Map
 Santa Monica College Campuses

Health/P.E./Fitness/Dance
 Construction Start: Quarter III 2011

- Relocated Programs:**
- 1 Physical Education (From Temporary Facility TBD)
 - 2 Custodial Services (From Liberal Arts)

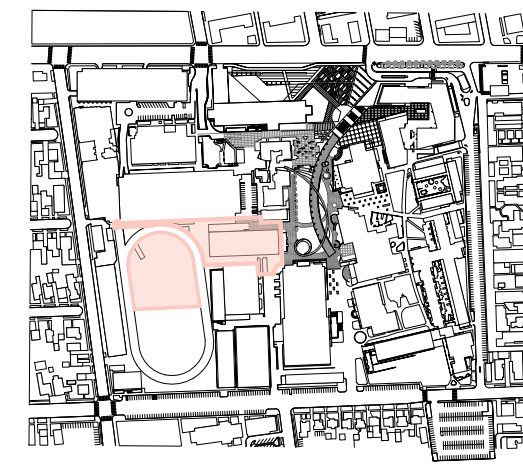
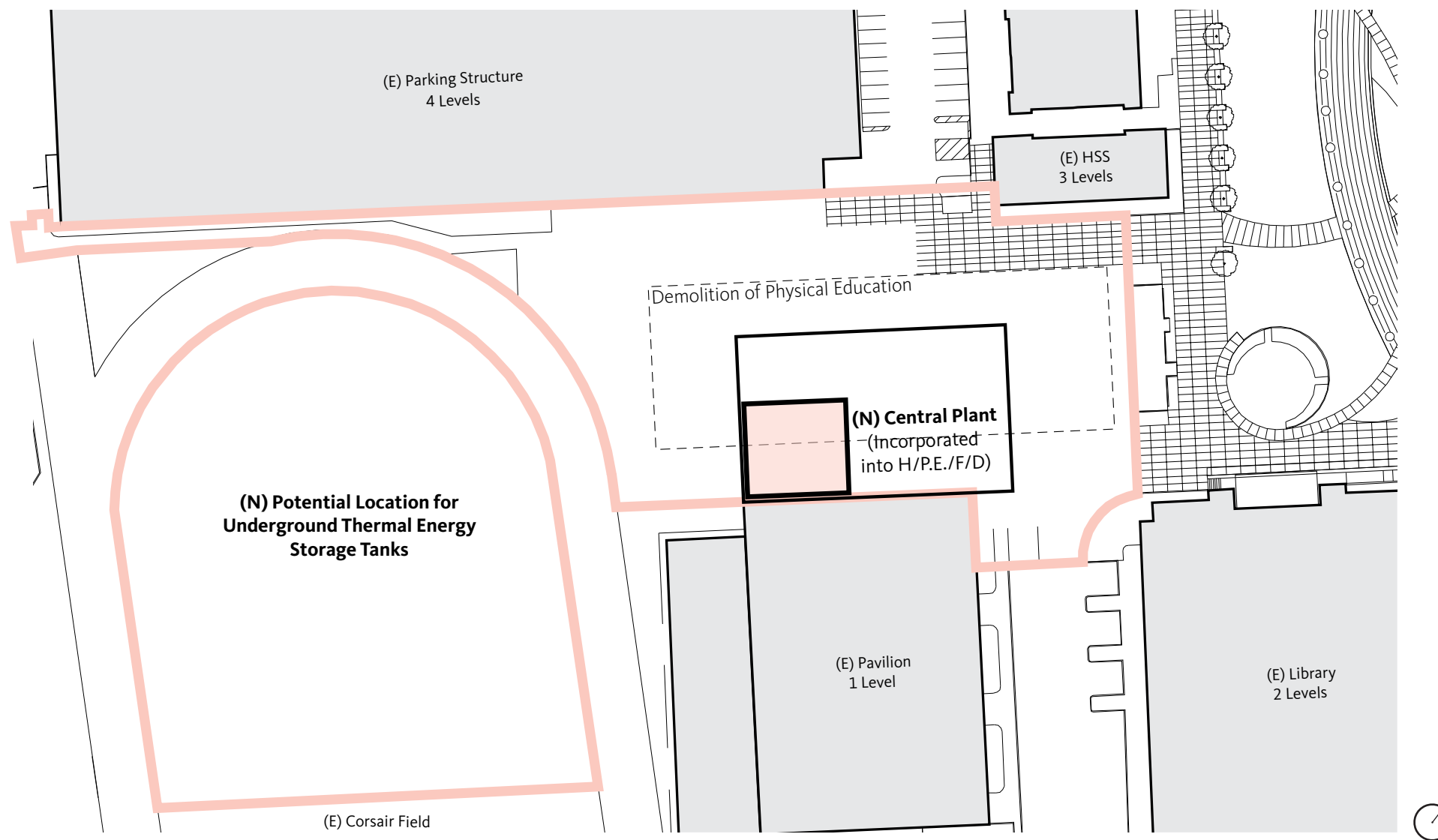


Health/P.E./Fitness/Dance

Project Site:	Health/P.E./Fitness/Dance
Site Area:	1.27 acres
Bldg to be Demolished (ASF):	16,740 s.f. (approx.)
New Building Area (ASF):	38,000 s.f. (approx.)

Legend

- Project Site
- Building Envelope
- Potential Footprint
- Building Demolition

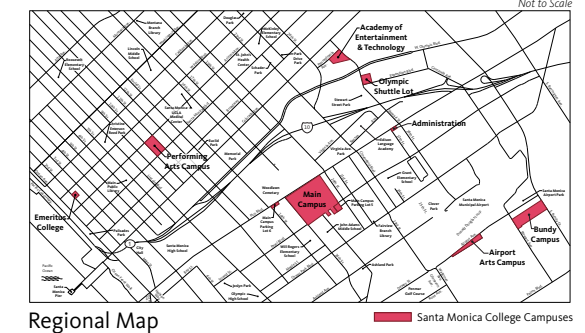
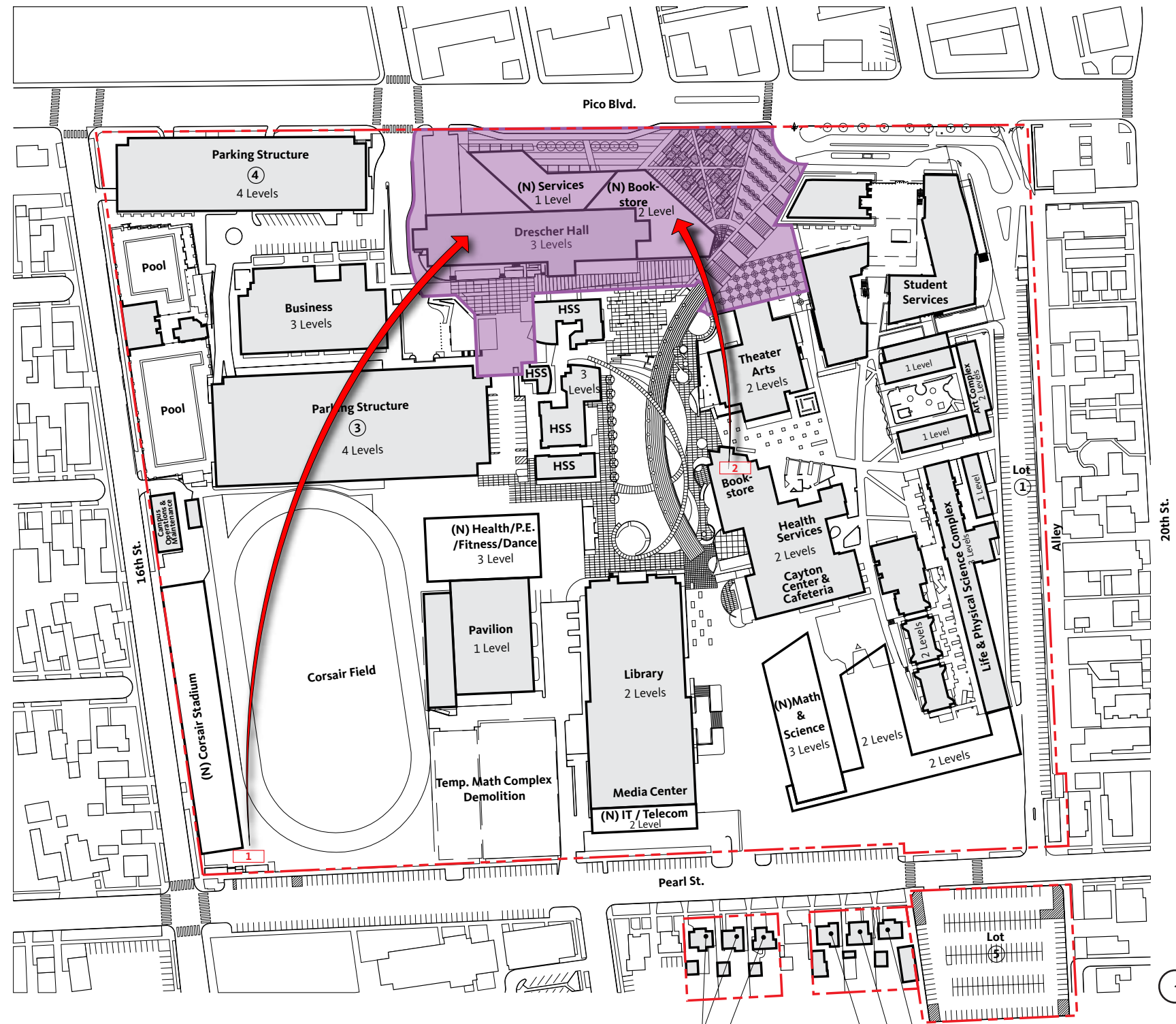
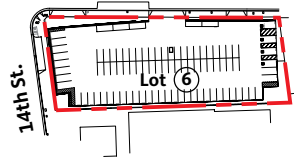


**Energy Saving Project-
 Central Plant**

Project Site: **Energy Saving Project Central Plant**
 Site Area: TBD acres
 Bldg to be Demolished (ASF): N/A
 New Building Area (ASF): 0 s.f.

Legend

- Project Site
- Potential Footprint
- Building Demolition

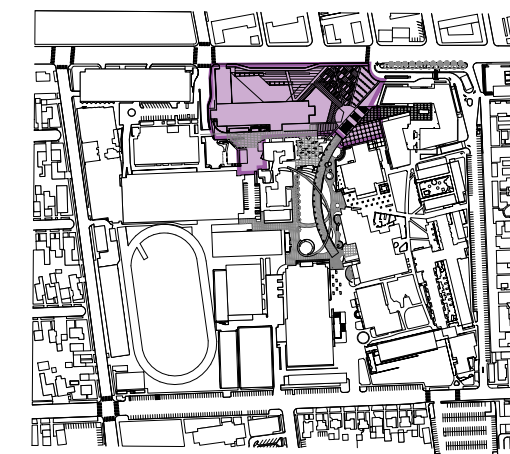
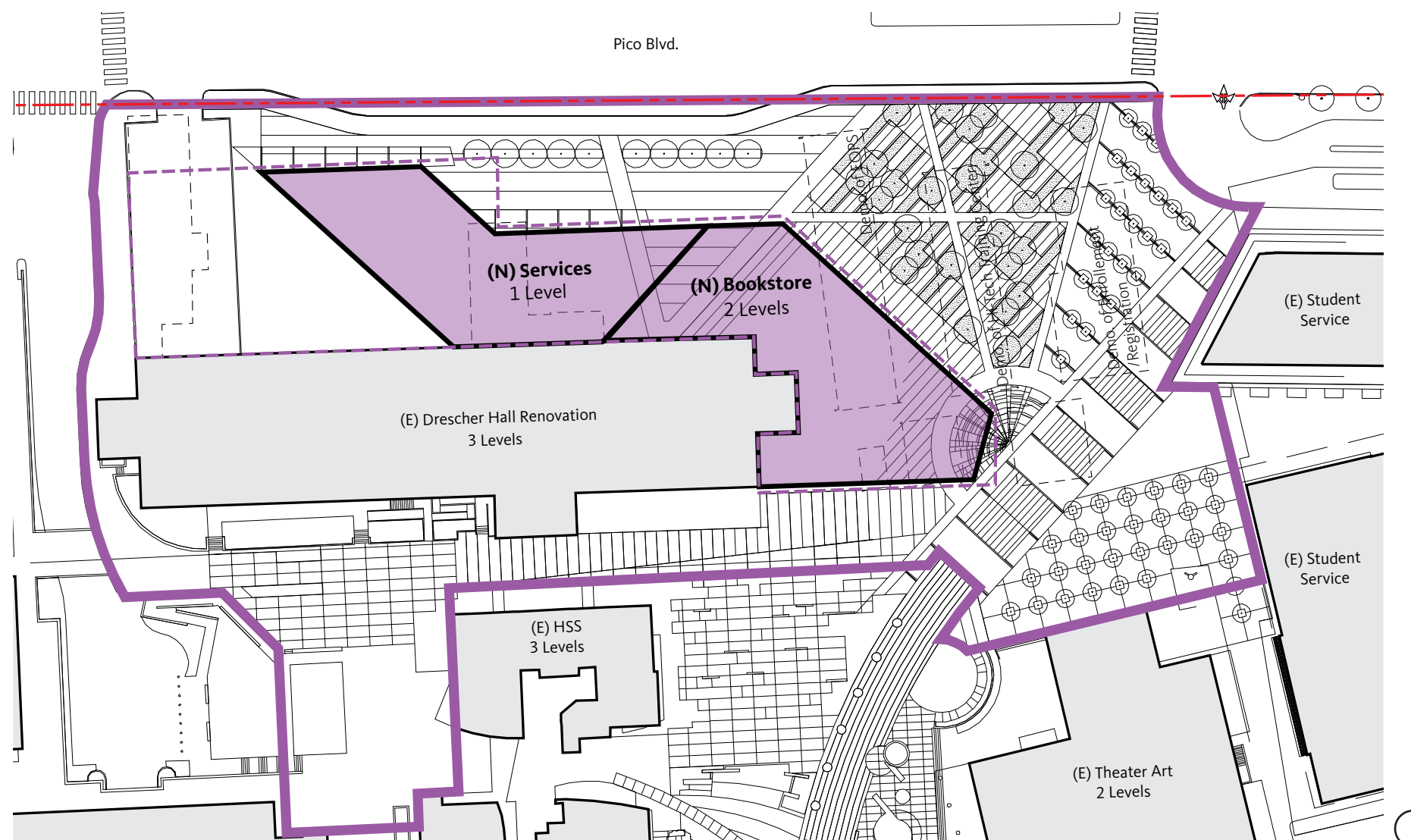


Regional Map █ Santa Monica College Campuses

Drescher Hall Modernization / Pico Promenade
 Construction Start: Quarter II 2013

Relocated Programs:

- 1 ESL (From Temporary ESL Facility)
- 2 Bookstore (From Bookstore)



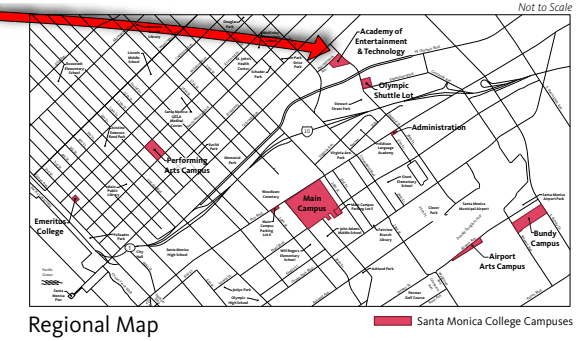
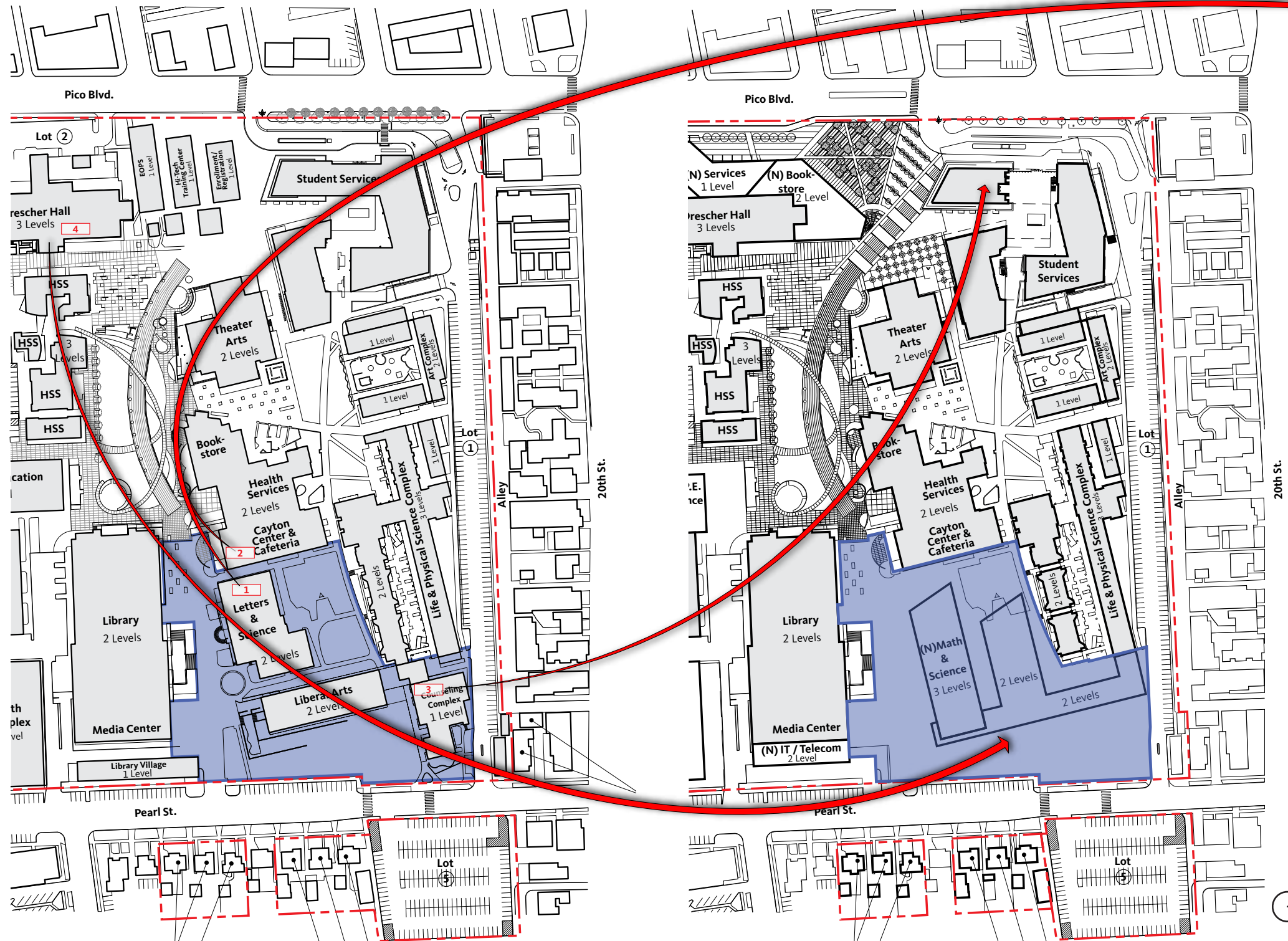
Drescher Hall Modernization / Pico Promenade

Project Site:	Drescher Hall/ Pico Promenade
Site Area:	3.89 acres
Bldg to be Demolished (ASF):	23,820 s.f. (approx.)
New Building Area (ASF):	14,200 s.f. (approx.)

Legend

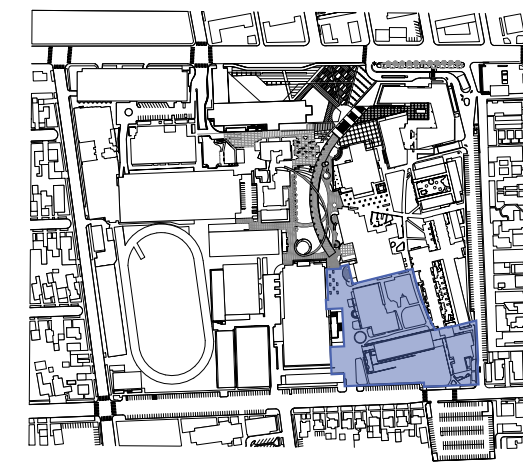
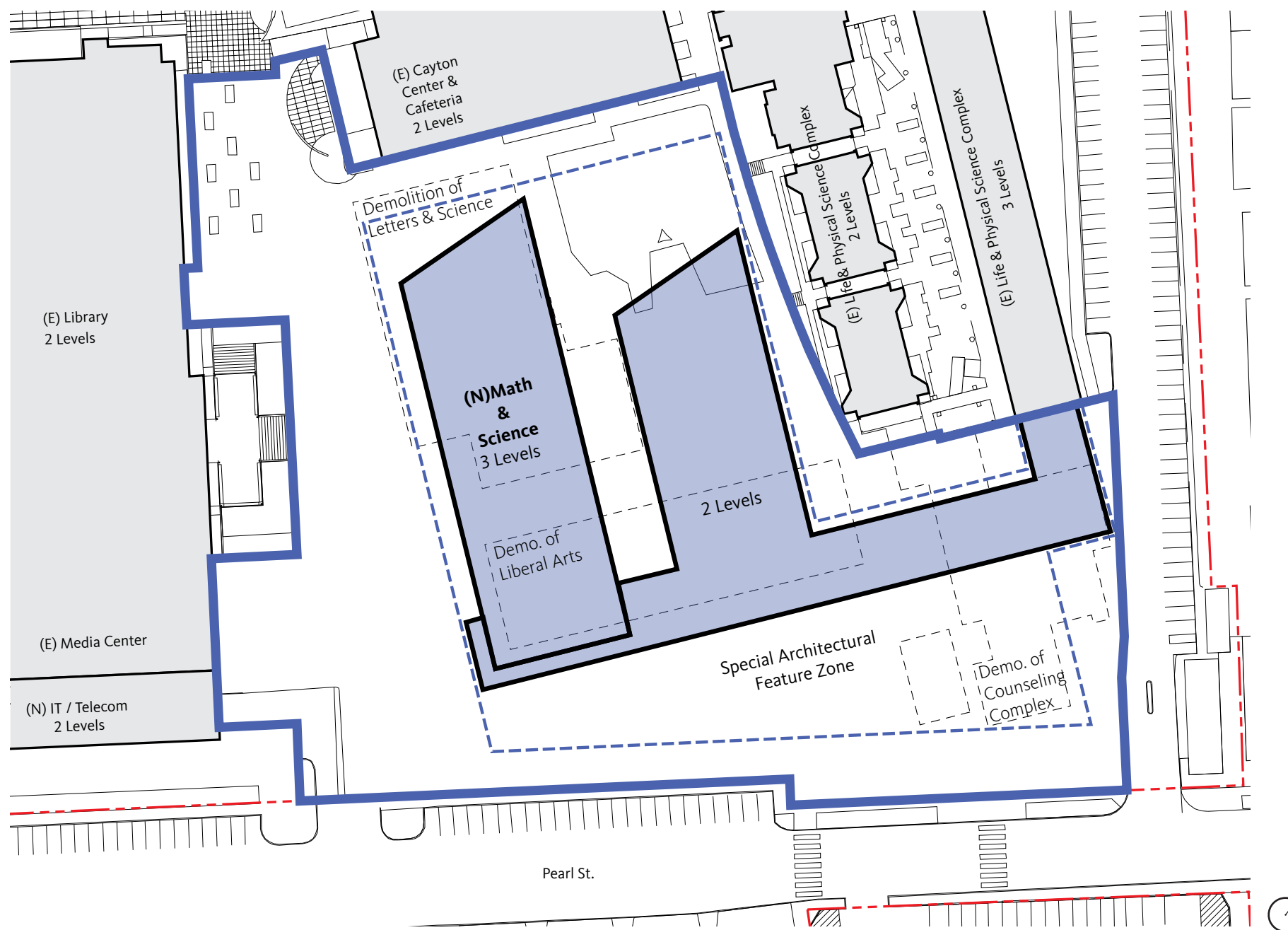
- Project Site
- Property Line
- Building Envelope
- Potential Footprint
- Building Demolition

MATH & SCIENCE EXTENSION REPLACEMENT - MOVE



Math & Science Extension Replacement
 Construction Start: Quarter III 2013

- Relocated Programs:**
- 1 Broadcasting / Film / Journalism (From Letters & Science)
 - 2 KCRW (From Cayton Center)
 - 3 Counseling (From Counseling Complex)
 - 4 Planetarium & Earth Sciences (From Drescher Hall)



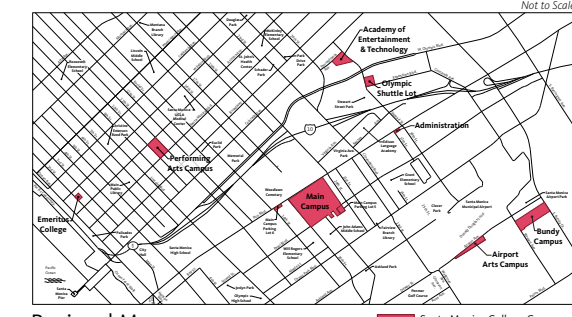
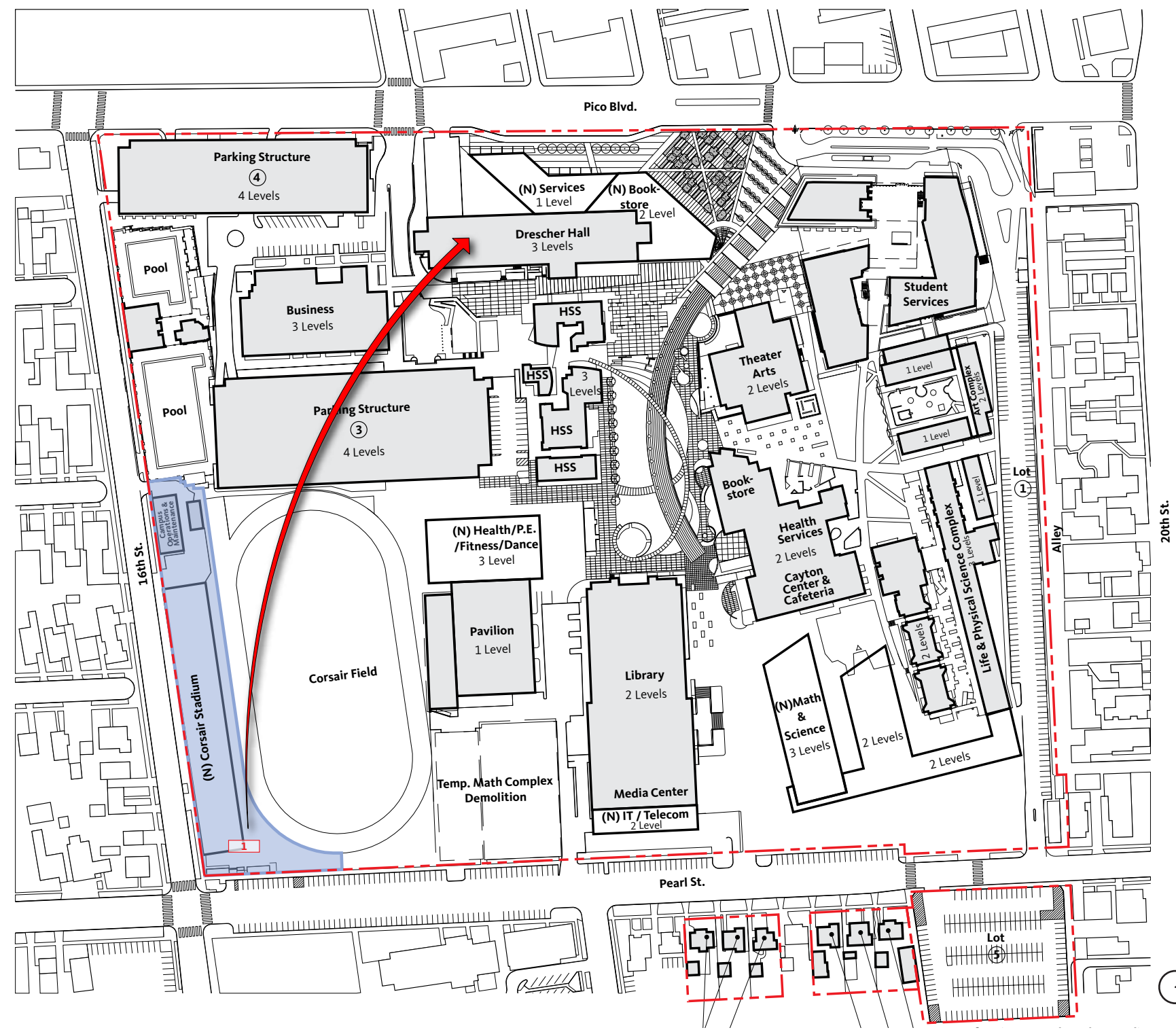
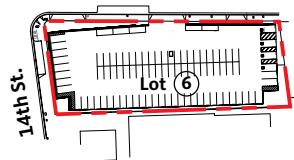
Replacement Math & Science Replacement

Project Site:	Math & Science
Site Area:	3.73 acres
Bldg to be Demolished (ASF):	73,600 s.f. (approx.)
New Building Area (ASF):	70,060 s.f. (approx.)

Legend

- Project Site
- - - Property Line
- - - Building Envelope
- Potential Footprint
- - - Building Demolition

CORSAIR STADIUM & ESL DEMOLITION - MOVE



Regional Map

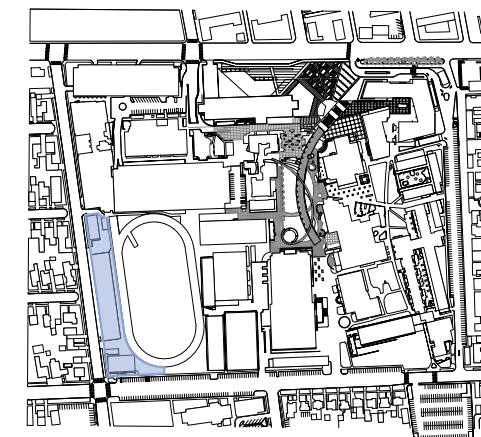
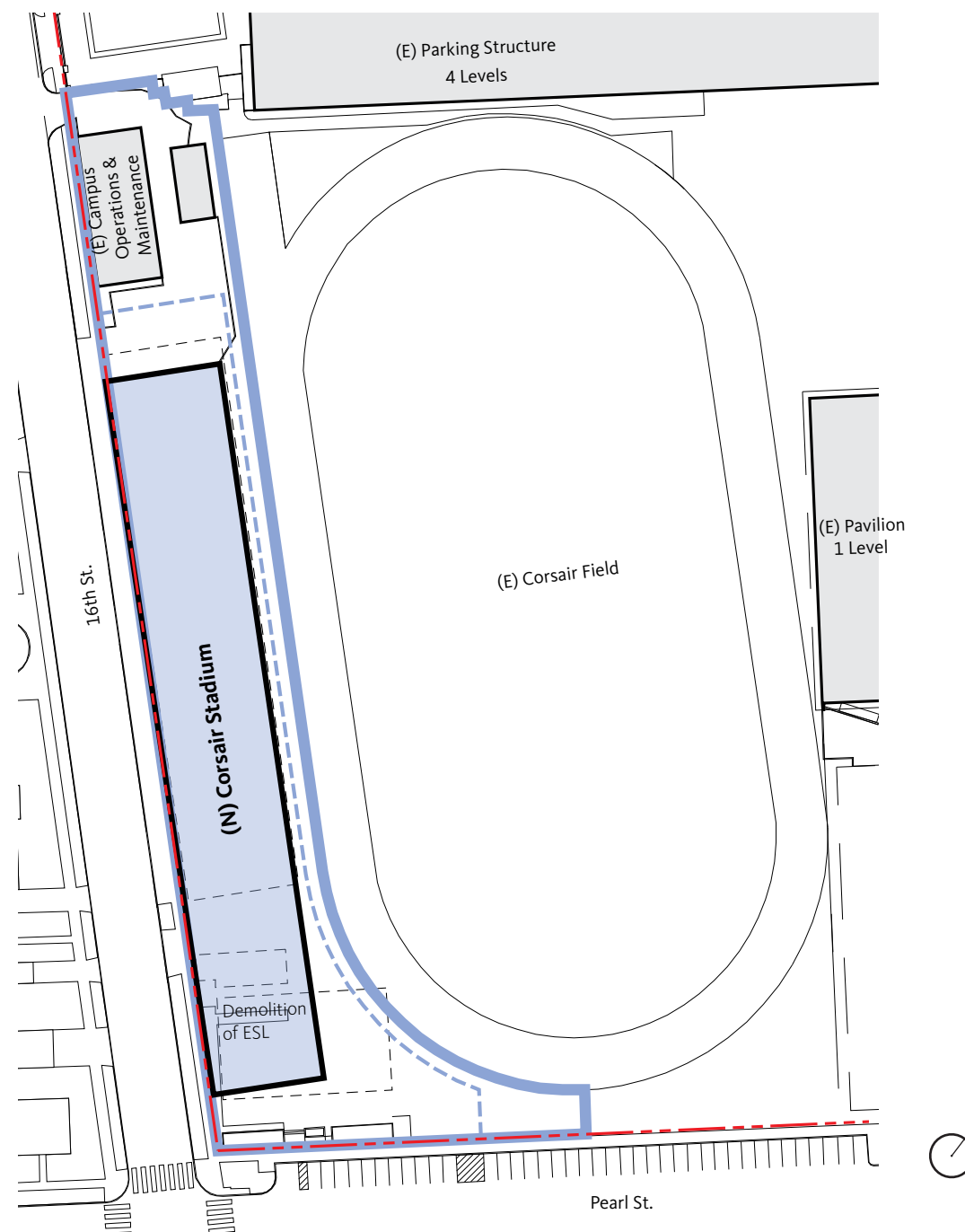
**Corsair Stadium /
 ESL Demolition**

Construction Start: Quarter III 2014

Relocated Programs:

Temp ESL Complex (To Drescher Hall)



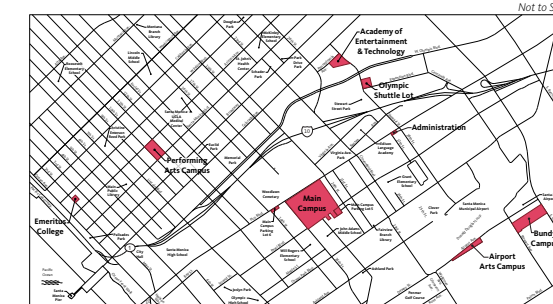
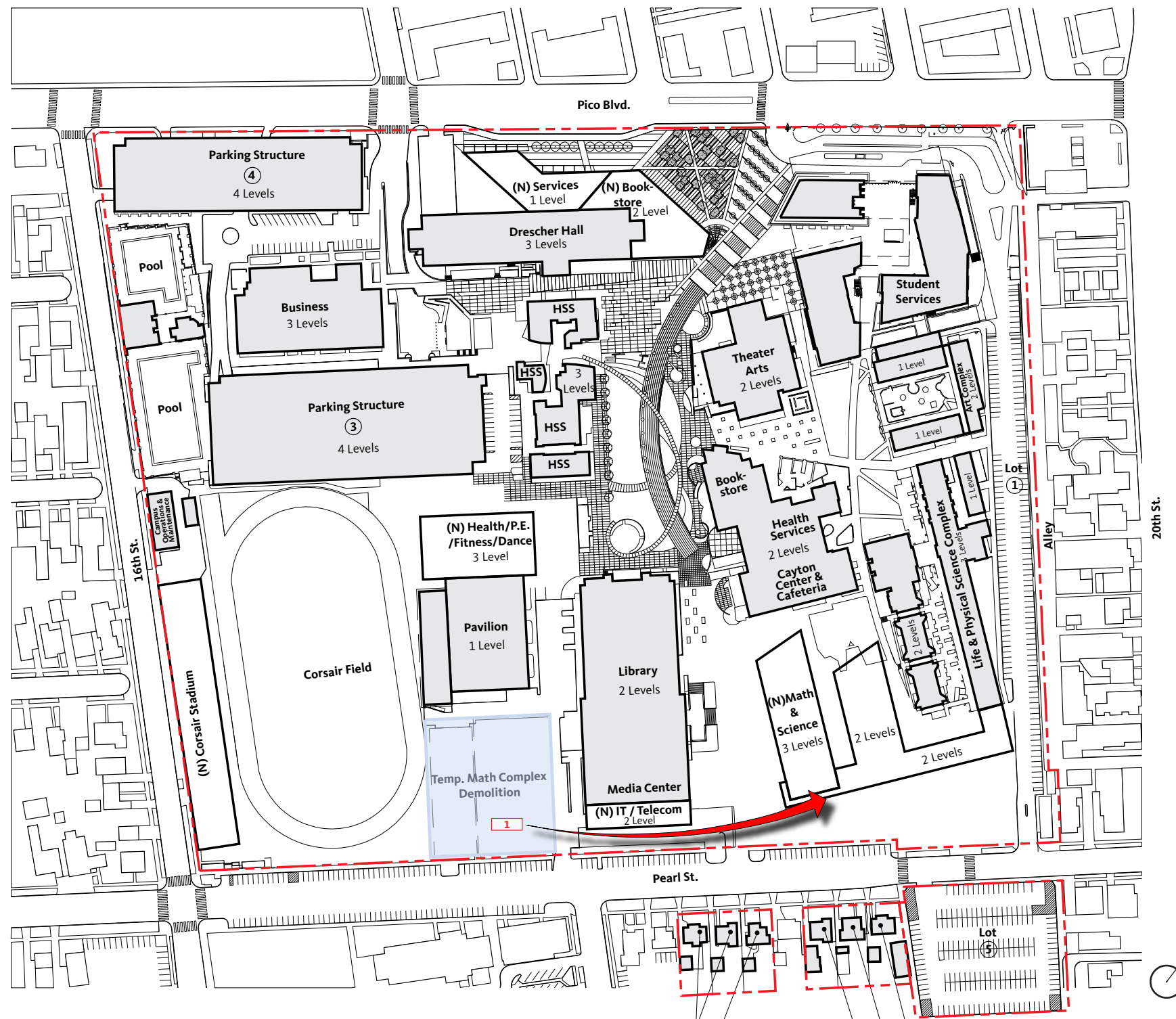
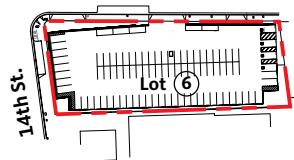


**Corsair Stadium /
 ESL Demolition**

Project Site:	Corsair Stadium/ESL Demolition
Site Area:	1.34 acres
Bldg to be Demolished (ASF):	21,350 s.f. (approx.)
New Building Area (ASF):	20,050 s.f. (approx.)

- Legend**
- Project Site
 - - - Property Line
 - - - Building Envelope
 - Potential Footprint
 - - - Building Demolition

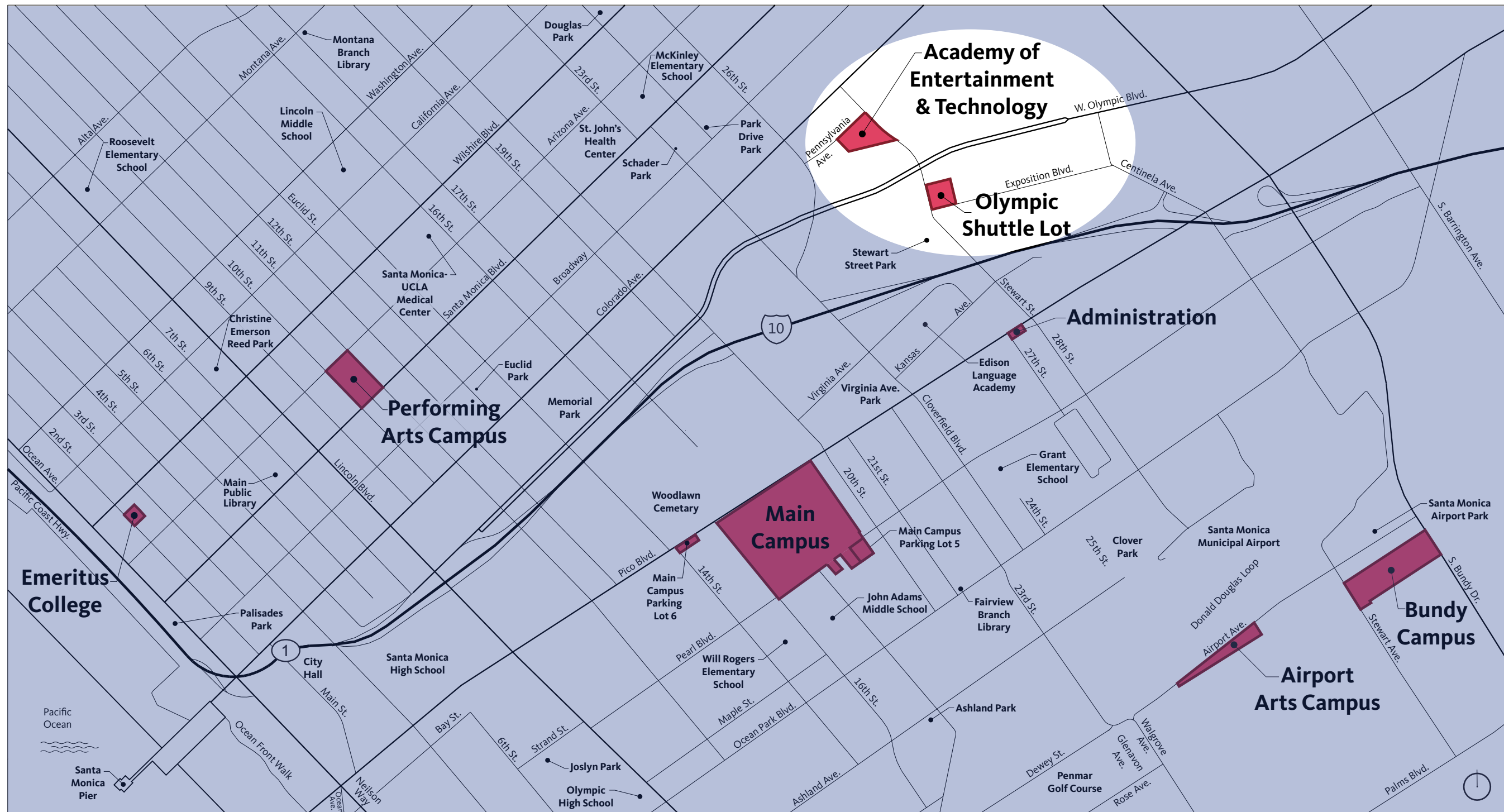
TEMPORARY MATH COMPLEX DEMOLITION - MOVE

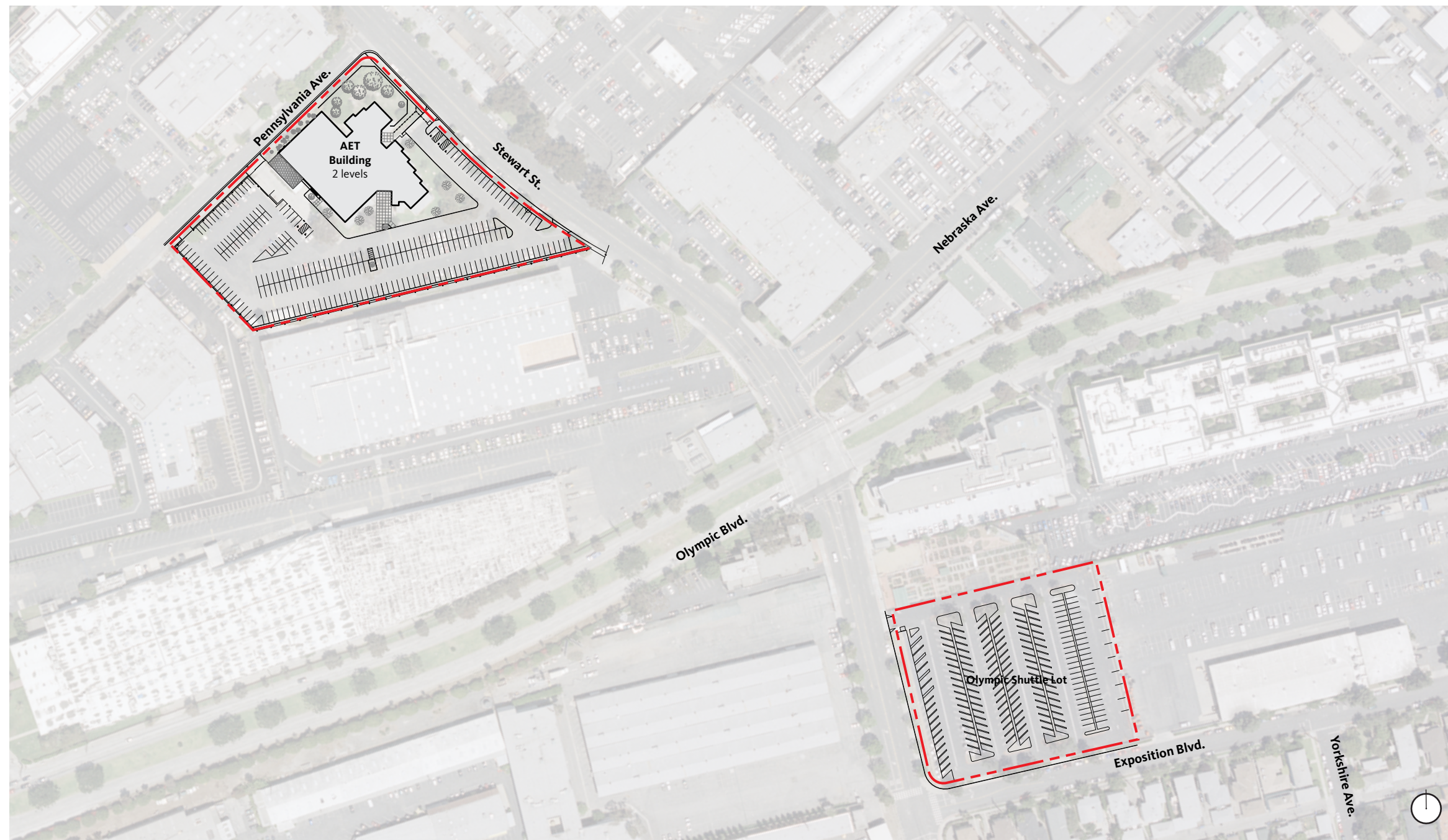


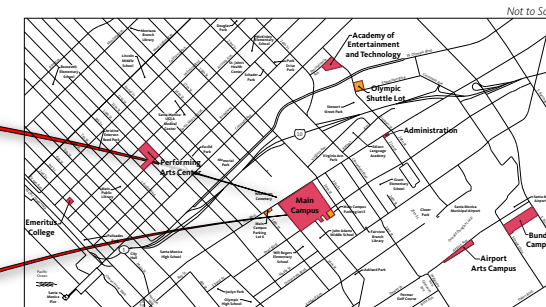
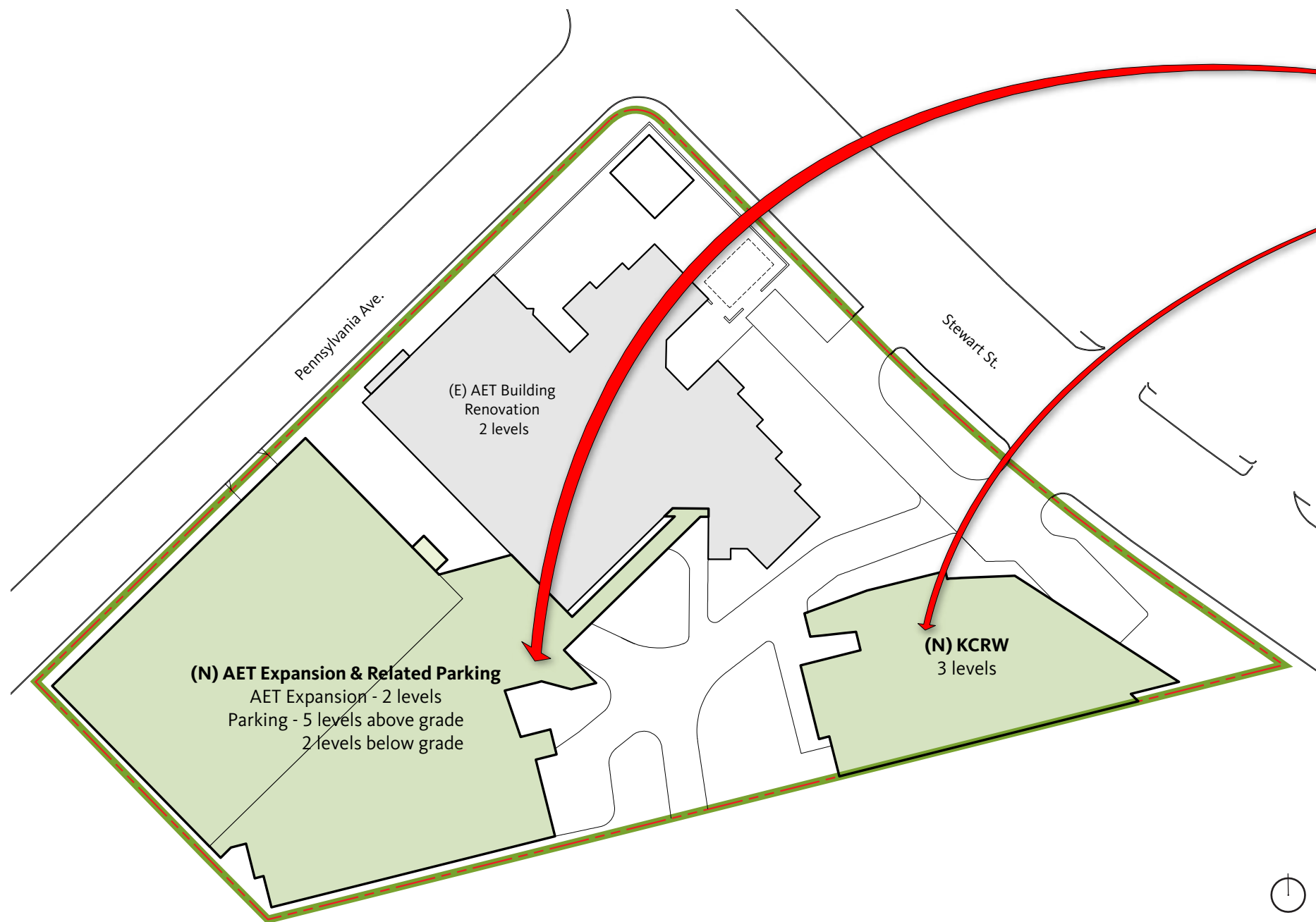
Regional Map
 Santa Monica College Campuses

Temporary Math Complex Demolition
 Construction Start: TBD

Relocated Programs:
 1 Math (From Temporary Math Complex)







Regional Map

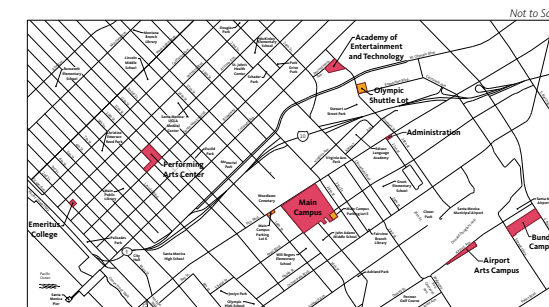
Santa Monica College Campuses

AET / KCRW

Construction Start: Quarter III 2010

Relocated Programs:

- 1 Broadcasting / Film / Journalism
- 2 KCRW



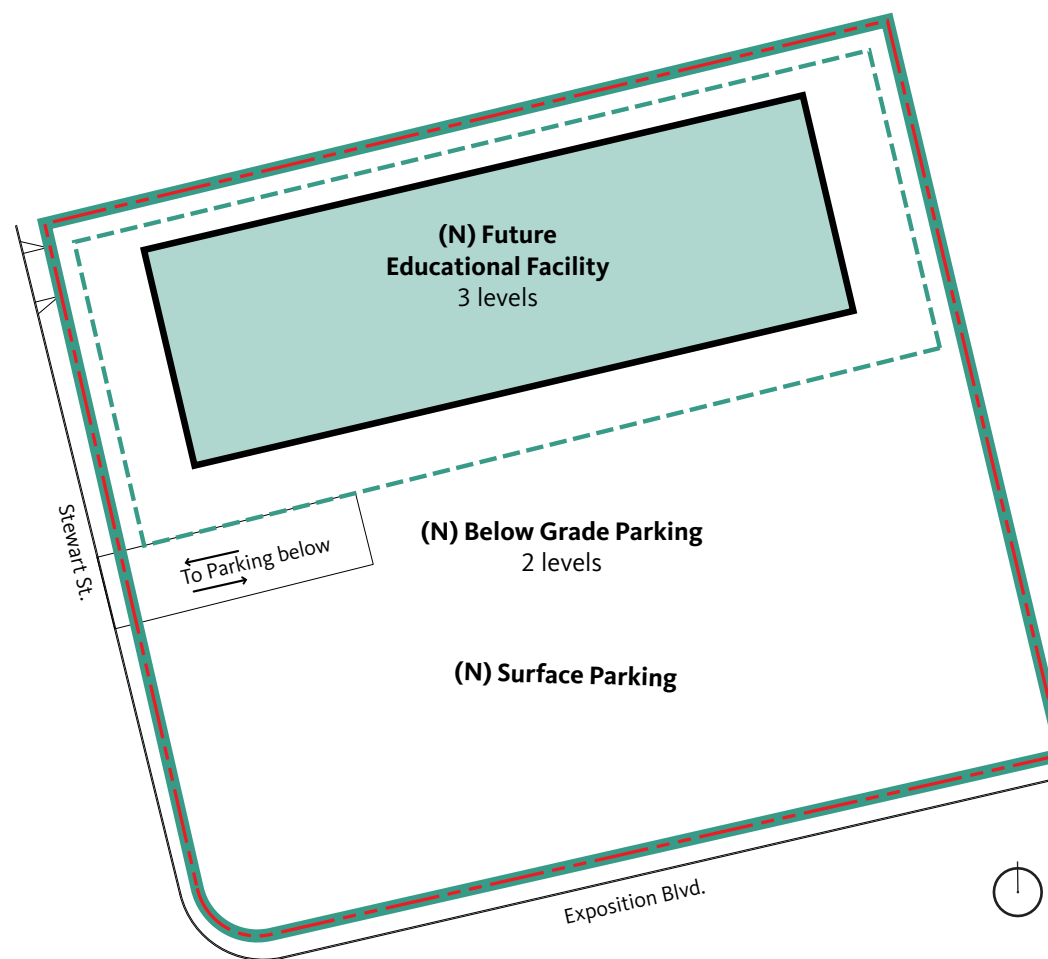
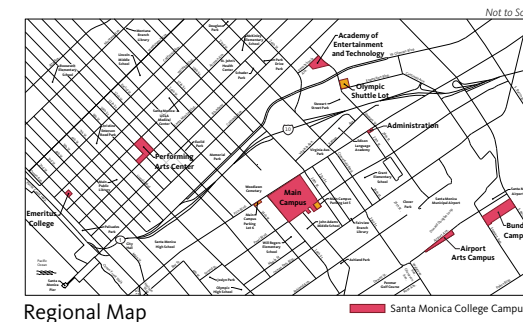
Regional Map

Santa Monica College Campuses

AET / KCRW



Project Site:	AET / KCRW
Site Area:	2.3 acres
Bldg to be Demolished (ASF):	0 s.f.
New Building Area (ASF):	47,170 s.f. (approx).
Replacement & New Parking:	450 spaces

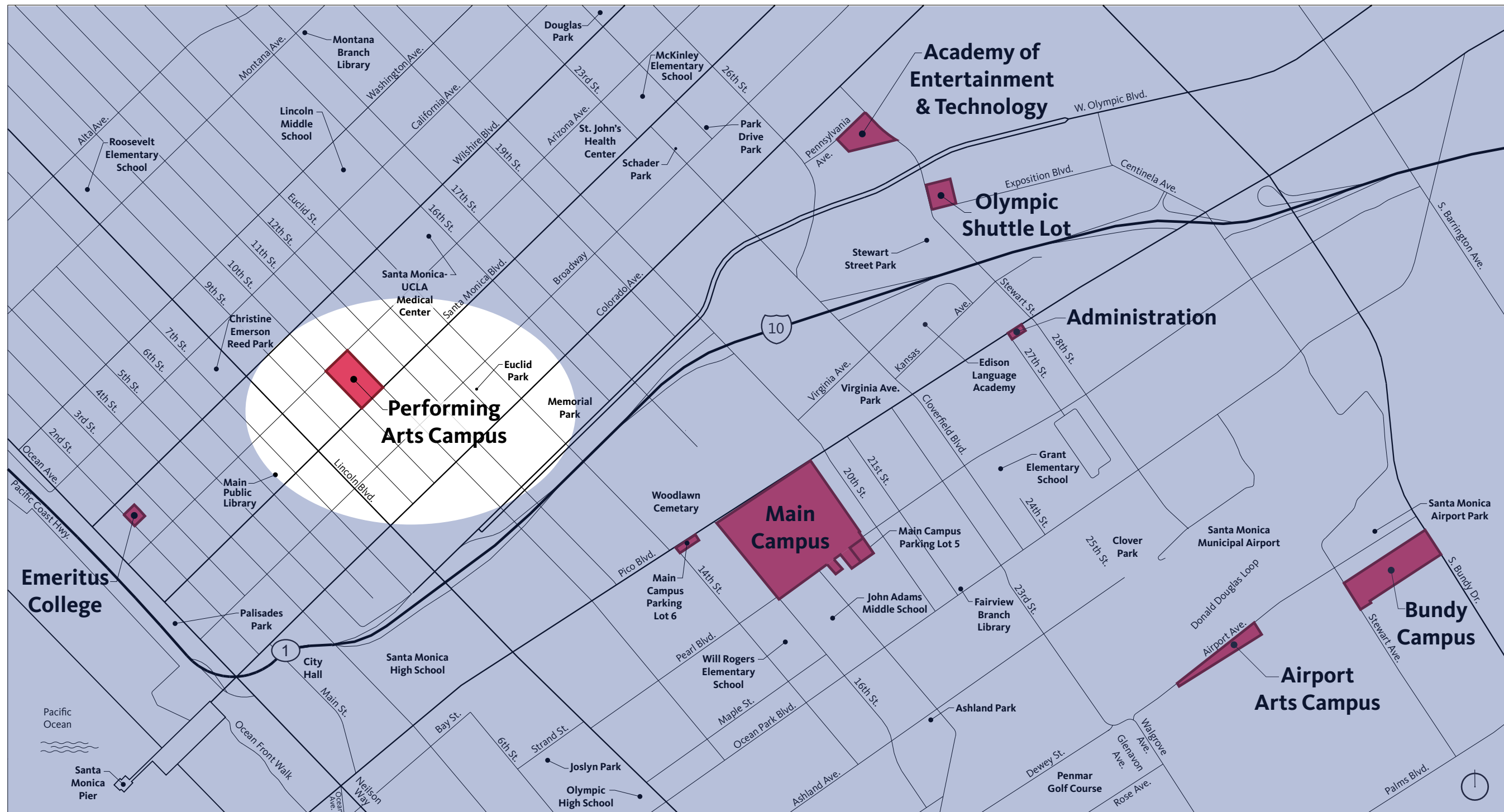


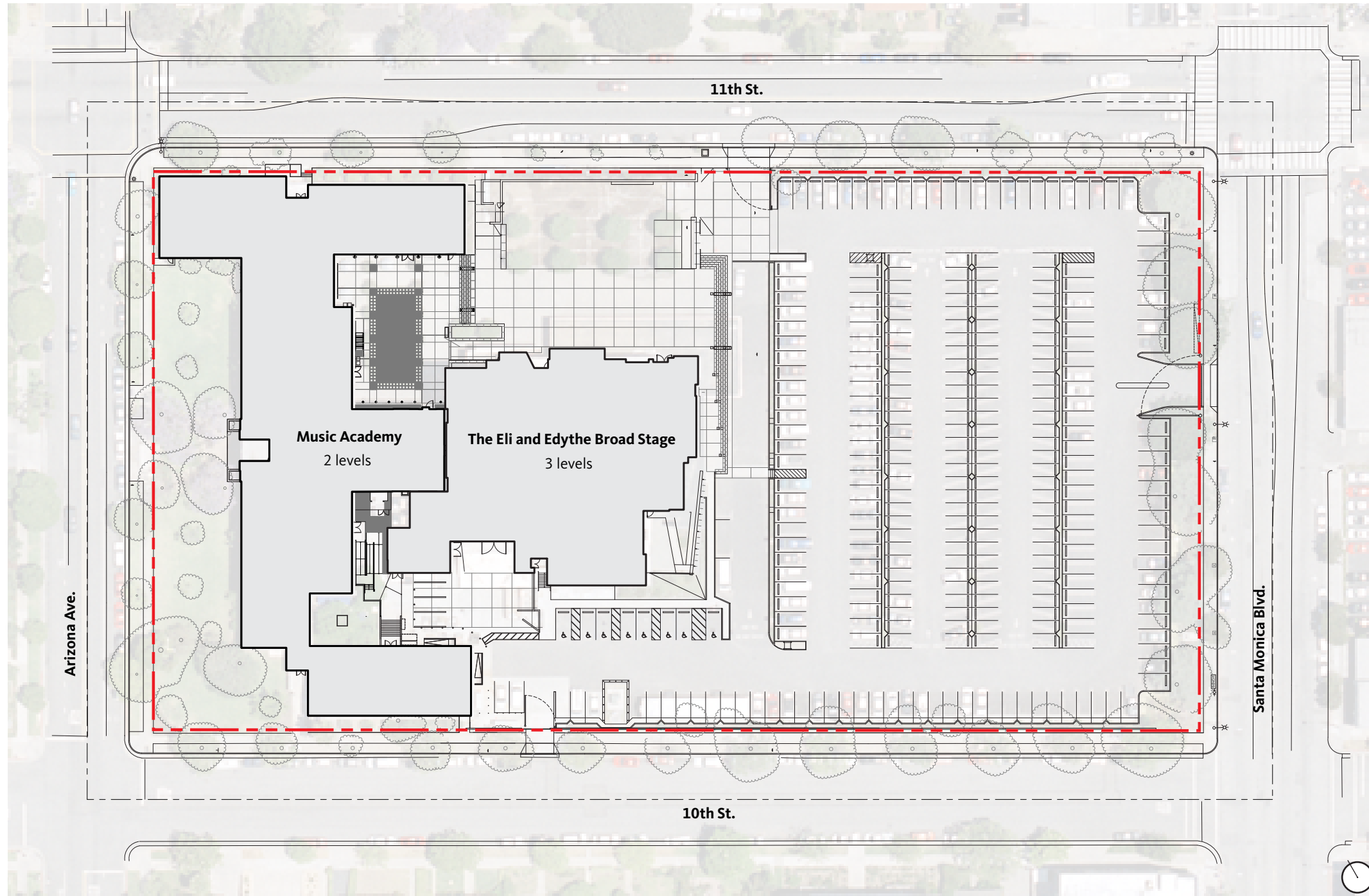
Future Educational Facility

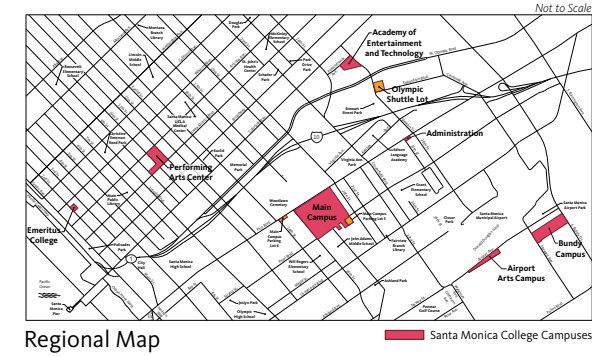
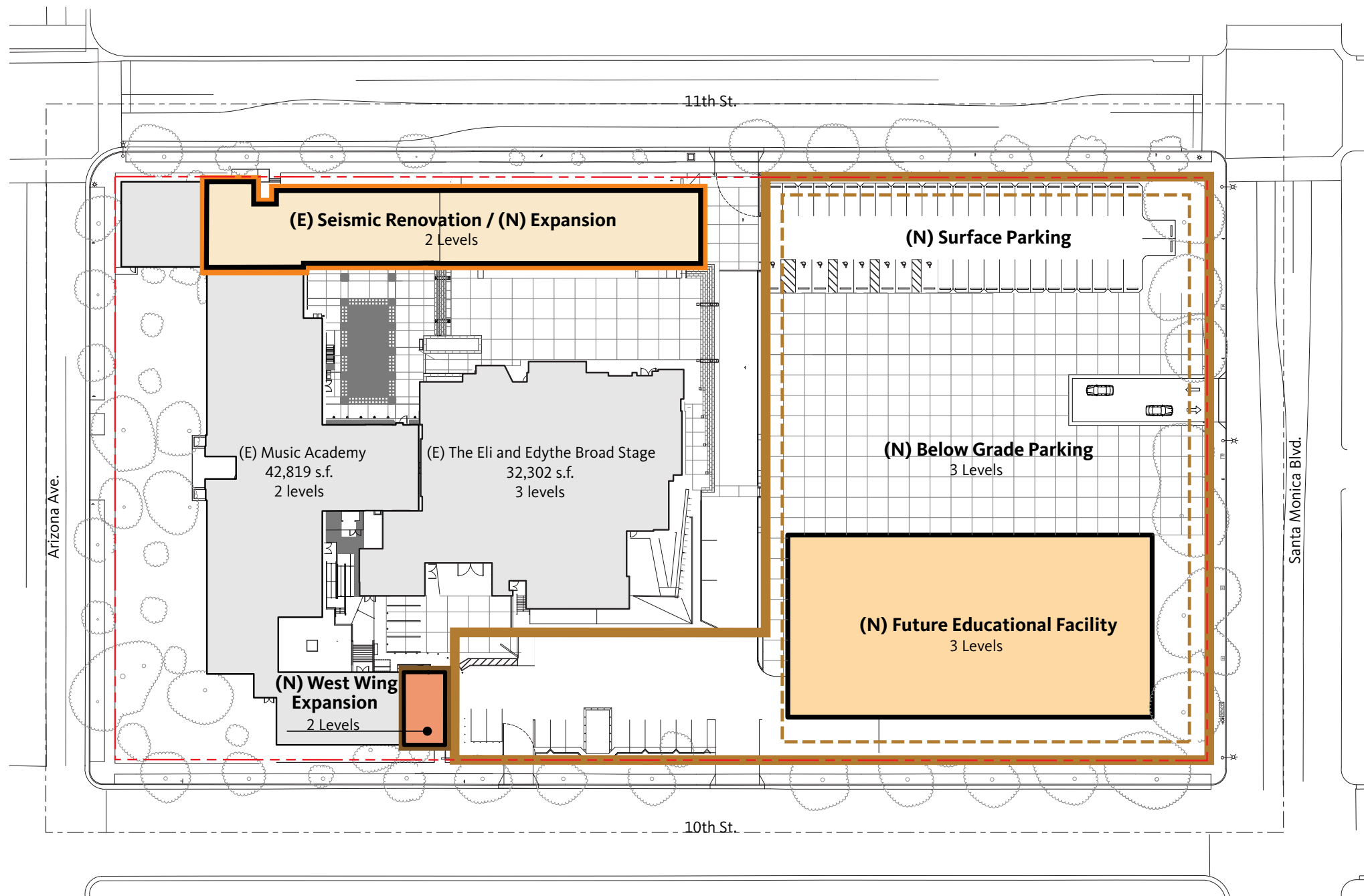
Project Site:	Olympic Shuttle Lot
Site Area:	2.35 acres
Bldg to be Demolished (ASF):	N/A
New Building Area (ASF):	48,750 s.f. (approx.)
Replacement & New Parking:	630 spaces

Legend

- Project Site
- Property Line
- Building Envelope
- Potential Footprint







Future Educational Facility

Project Site:	Future Educational Facility
Site Area:	1.72 acres
Bldg to be Demolished (ASF):	N/A
New Building Area (ASF):	40,600 s.f. (approx.)
Replacement & New Parking	650 Spaces

Seismic Renovation/Expansion

Project Site:	Seismic Renovation / Expansion
Site Area:	0.25 acres
Bldg to be Demolished (ASF):	N/A
New Building Area (ASF):	15,460 s.f. (approx.)

West Wing Expansion

Project Site:	West Wing Expansion
Site Area:	0.02 acres
Bldg to be Demolished (ASF):	N/A
New Building Area (ASF):	3,350 s.f. (approx.)

- Legend**
- Project Site - Future Educational Facility
 - Project Site - Seismic Renovation / Expansion
 - Project Site - West Wing Expansion
 - Property Line
 - Building Envelope
 - Potential Footprint - Future Educational Facility
 - Potential Footprint - Seismic Renovation / Expansion
 - Potential Footprint - West Wing Expansion

California Environmental Quality Act (CEQA) - Public Resources Code Sections 21000-21177

Purpose: An Environmental Impact Report is an informational document which will inform public agency decision-makers and the public of the significant environmental effects of a project, identify possible ways to minimize the significant effects, and describe reasonable alternatives to the project. (Sections 15121 (a) and 15362 of the State CEQA Guidelines)

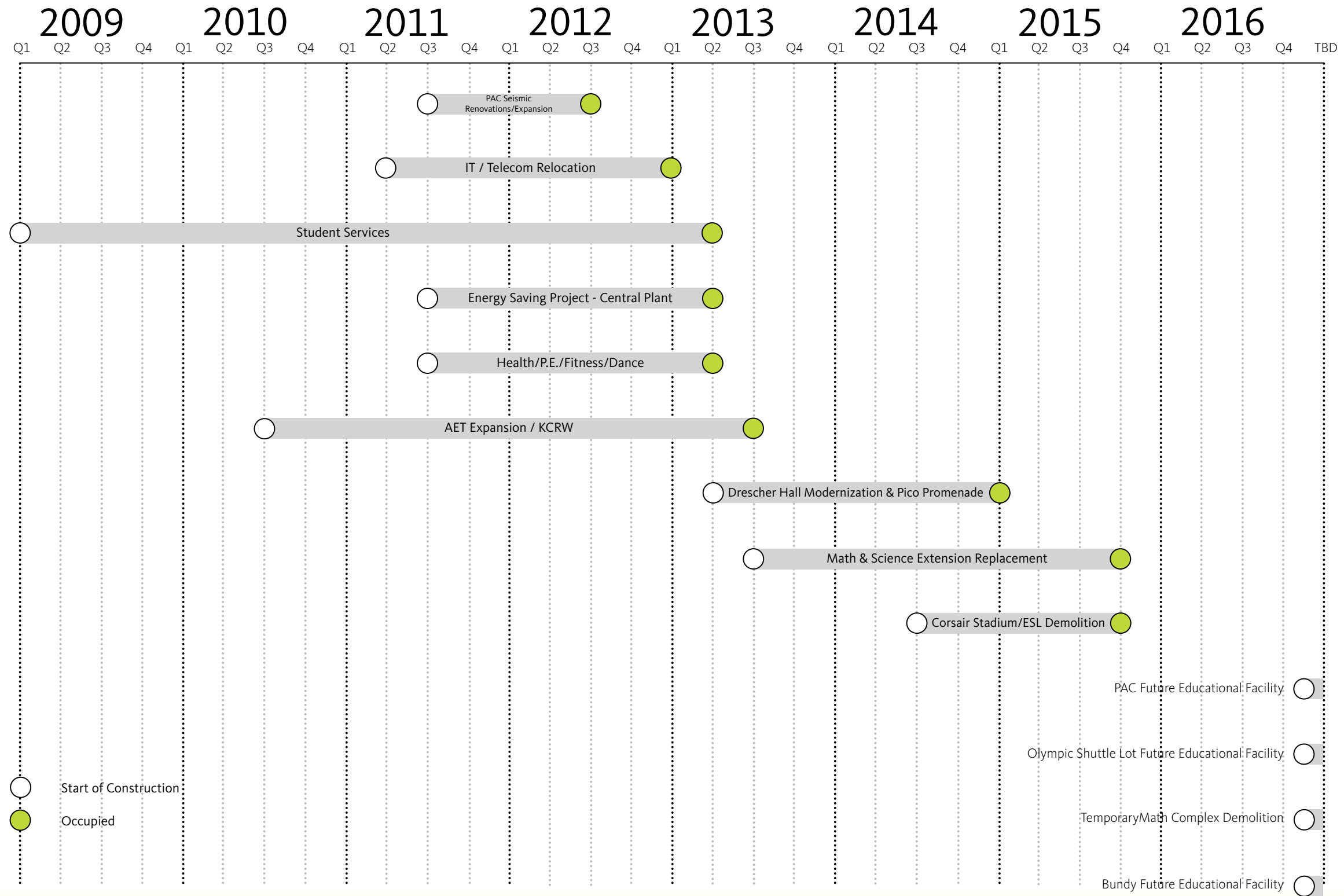
Notice of Preparation: Santa Monica College has determined that an Environmental Impact Report (EIR) will be prepared for the Proposed Project. The Notice of Preparation (NOP) is currently being circulated for a 30-day review period to solicit comments from identified responsible and trustee agencies, as well as interested parties on the scope of the Draft EIR.

Environmental Issue Areas to Be Analyzed in the EIR:

- Air Quality
- Aesthetics (Views, Light & Glare)
- Biology
- Cultural/Historic Resources
- Geology/Soils
- Global Climate Change
- Hazards and Hazardous Materials
- Hydrology and Water Quality
- Noise
- Public Utilities (Water, Sewer, and Energy Conservation)
- Public Services (Police and Fire Protection)
- Transportation and Circulation
- Parking
- Neighborhood Effects

Future Steps:

1. 30-Day NOP Comment Period (Ends on October 26th, 2009)
2. Lead Agency to Publish and Circulate the Draft EIR for a 45-Day Review Period
3. Lead Agency to Review and Respond to Public and Agency Comments on the Draft EIR and Prepare a Final EIR
4. SMC Board of Trustees to Certify the Final EIR and Approve Career and Educational Facilities Master Plan 2009 Update.



Please sign the guest list and review the project information located around the room.

Thank you for coming.

Community Meetings:

Wednesday, September 30th @ 7pm

Bundy Campus Community Room
3171 South Bundy Drive
Los Angeles, CA 90066

Wednesday, October 7th @ 7pm

Academy of Entertainment & Technology
Room 235, 1660 Stewart Street
Santa Monica, CA 90404

Wednesday, October 14th @ 7pm

Santa Monica College Main Campus
Business Room 111, 1900 Pico Boulevard
Santa Monica, CA 90405