

SANTA MONICA COLLEGE MALIBU CAMPUS & LA COUNTY SHERIFF'S SUB-STATION

ENVIRONMENTAL IMPACT REPORT

COMMUNITY AND SCOPING MEETING: The Santa Monica Community College District (SMCCD) has determined that a project-level Environmental Impact Report (EIR) is required for the SMC Malibu Campus project. SMCCD is the Lead Agency and is requesting your input as to the scope and content of relevant environmental information to be considered in the EIR. You are invited to participate in the Notice of Preparation (NOP) consultation and CEQA review process. A scoping meeting will be held in the Multi-Purpose Room at Malibu City Hall on Thursday, May 31, 2012, starting at 6:00 pm.

PROJECT LOCATION: The proposed project is to be located at 23555 Civic Center Drive, Malibu, CA. The project site consists of an irregularly shaped ground lease area of about 2.94 acres within the larger 9.18-acre Los Angeles County-owned and operated civic center complex.

PROJECT DESCRIPTION: SMCCD proposes constructing an educational instructional facility and a Los Angeles County Sheriff's sub-station to serve the Malibu community. The site is currently improved with the former Los Angeles County Sheriff's Station, which is approximately 23,882 square feet of developed floor area, including a basement level.

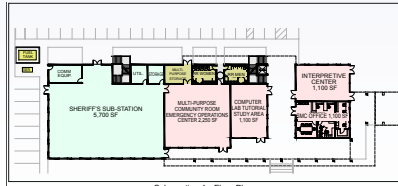
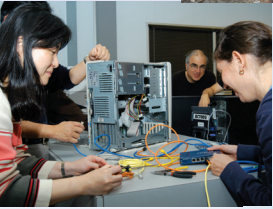
The proposed project will include demolition of the existing building, and new construction of a 2-story above grade, approximately 27,500 square foot educational facility including an approximately 5,700 square foot Community Sheriff's Sub-Station and Emergency Operations and Planning Center on the ground floor, yielding a net increase of 3,618 square feet. The proposed developed floor area (FAR) is about 0.20 to 1.

The proposed Malibu Campus would include five classrooms and labs; a multi-purpose community room that will convert into an Emergency Operations Center (EOC) for local emergencies; a computer lab; and administrative offices to accommodate up to 210 students (FTE) and 12 faculty and staff members during peak time periods.

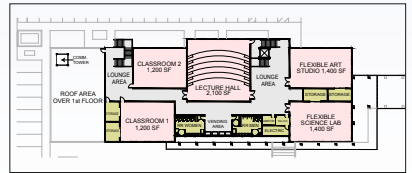
The Malibu Campus also proposes an interpretive center to support Legacy Park or other programs to highlight Malibu's unique coastal environment and cultural history.

SCOPE OF THE EIR: Detailed environmental analysis of the following environmental issue areas are proposed within the scope of the EIR: Aesthetics, Air Quality, Geology/Soils & Seismicity, Greenhouse Gas Emissions, Hazards and Hazardous Materials, Hydrology/Water Quality, Land Use & Planning, Noise, Public Services (Fire and Sheriff), Traffic/Circulation & Parking, and Public Utilities (Water, Wastewater, Energy Conservation). The EIR will also include a discussion of general impact categories, including: an analysis of cumulative effects, a statement of the growth inducing impacts of the proposed project, a summary of effects found not to be significant, and statement of the project's adverse and significant unavoidable impacts on the environment. The Initial Study Checklist Questionnaire is available to review at the Malibu Public Library and via SMC's website at www2.smc.edu/planning.

SANTA MONICA COLLEGE



Schematic - 1st Floor Plan



Schematic - 2nd Floor Plan

For enlarged view, see Malibu Campus Planning Update Booklet at website below.

SMC MALIBU CAMPUS & LA COUNTY SHERIFF'S SUB-STATION

A community and scoping meeting will be held to present SMC's Malibu Campus project, to provide for an educational instructional facility and a Los Angeles County Sheriff's sub-station. The meeting will solicit public comments with regard to potential environmental impacts that may occur as a result of the proposed project. A brief summary can be found on the reverse.

PUBLIC SCOPING MEETING

Thursday, May 31, 2012 (6:00 pm to 7:00 pm)
 Malibu City Hall – Multi-Purpose Room
 23825 Stuart Ranch Road, Malibu, CA 90265

Complete documents are available at www2.smc.edu/planning.

SANTA MONICA COMMUNITY COLLEGE DISTRICT BOARD OF TRUSTEES:
 Dr. Margaret R. Quiñones-Perez, Chair; Dr. Nancy Greenstein, Vice Chair; Dr. Susan Aminoff;
 Judge David Finkel (Ret.); Louise Jaffe; Rob Rader; Dr. Andrew Walzer; Joshua Scuteri, Student Trustee;
 Dr. Chui L. Tsang, Superintendent/President

Santa Monica Community College District
 1900 Pico Boulevard
 Santa Monica, CA 90405

*****ECRWSS****

Residential Customer

NON-PROFIT
 ORGANIZATION
 U.S. POSTAGE
 PAID
 SANTA MONICA
 COLLEGE