



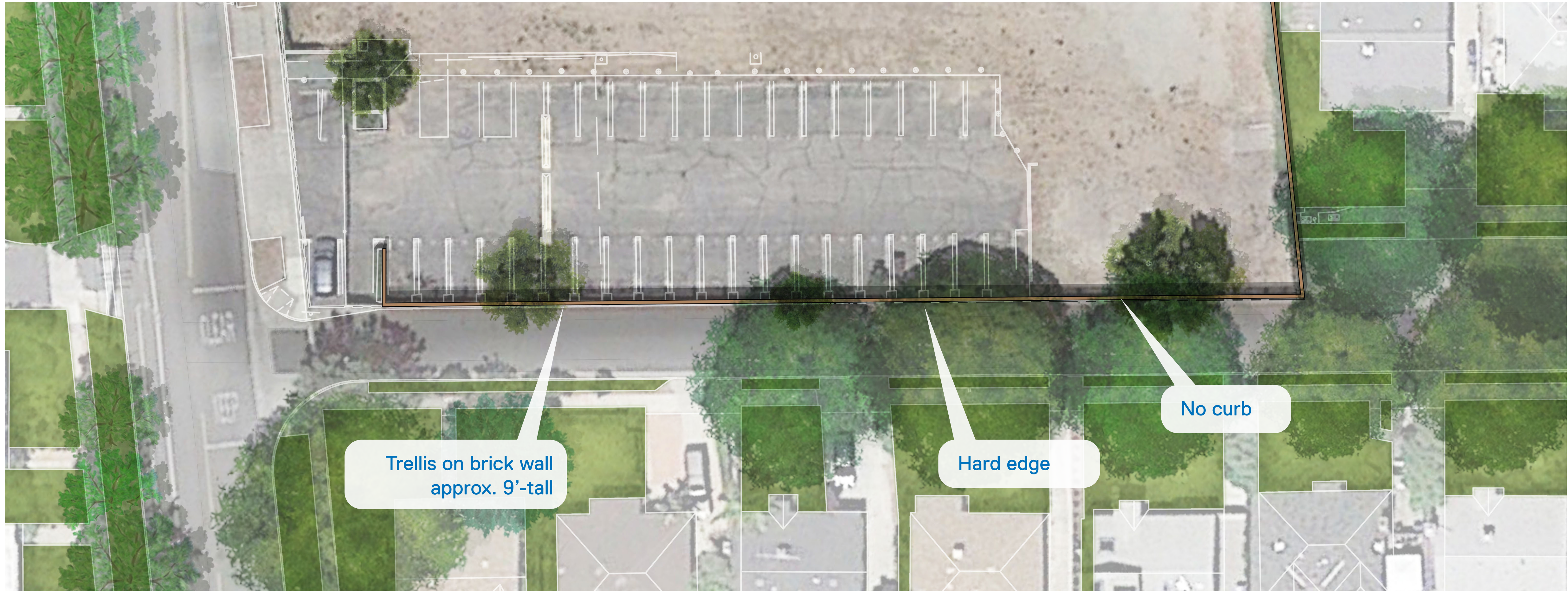
Art Complex Replacement

LITTLE + GRIMSHAW

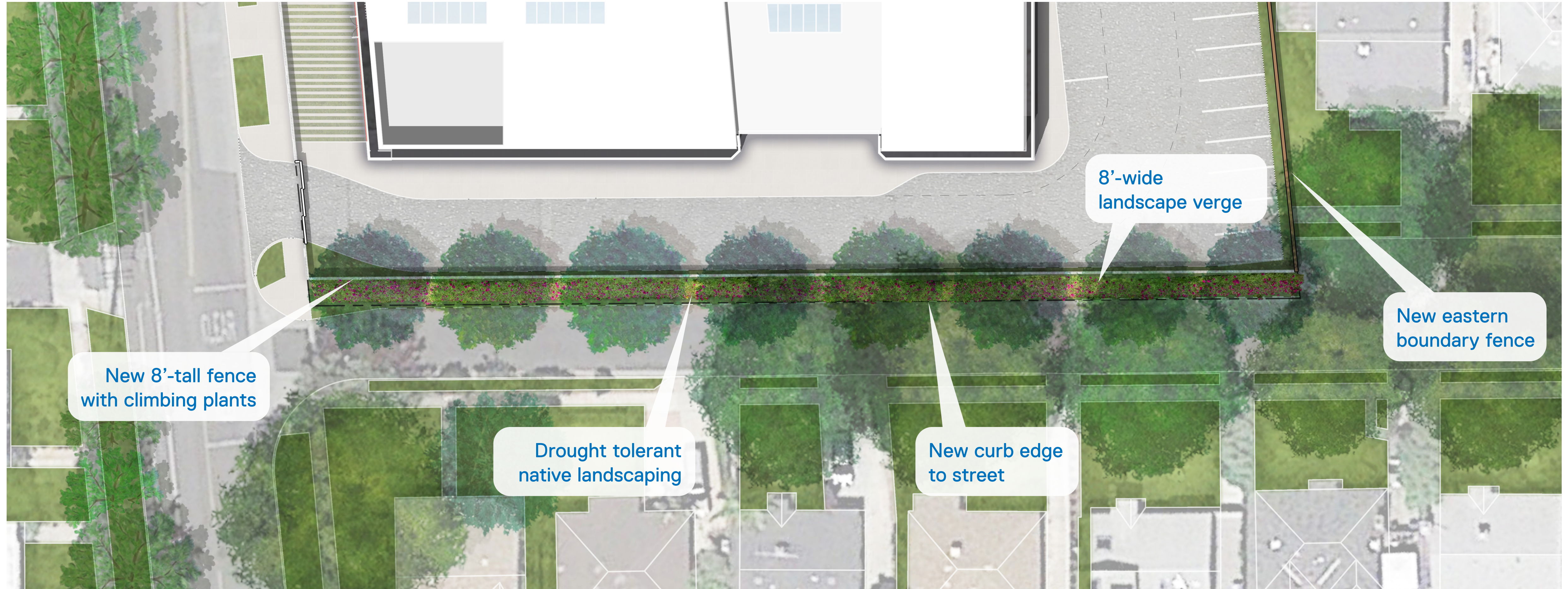
BAY STREET TASK FORCE DESIGN UPDATES | JULY 9TH, 2020

Bay Street Landscape Edge

Existing Bay Street Plan



Proposed Bay Street Landscape Buffer



Existing Streetscape



Proposed Streetscape



Existing Streetscape



Proposed Streetscape



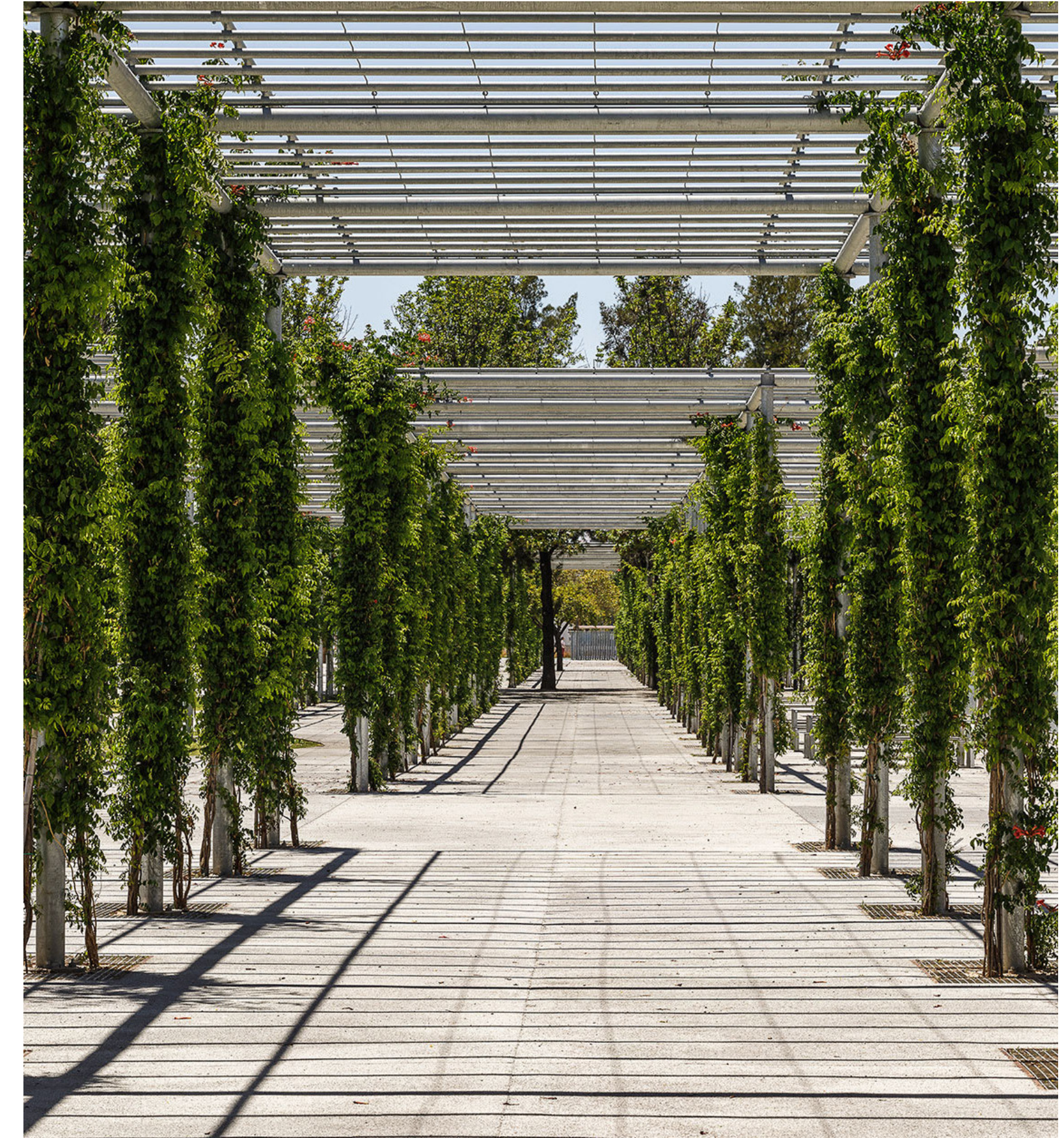
Vine Screening Precedents



Botanical Garden Frauenfeld, Switzerland
Stauffer & Hasler Architekten



The Base Phetkasem Bangkok, Thailand
Arsomslip Community & Environment Architect



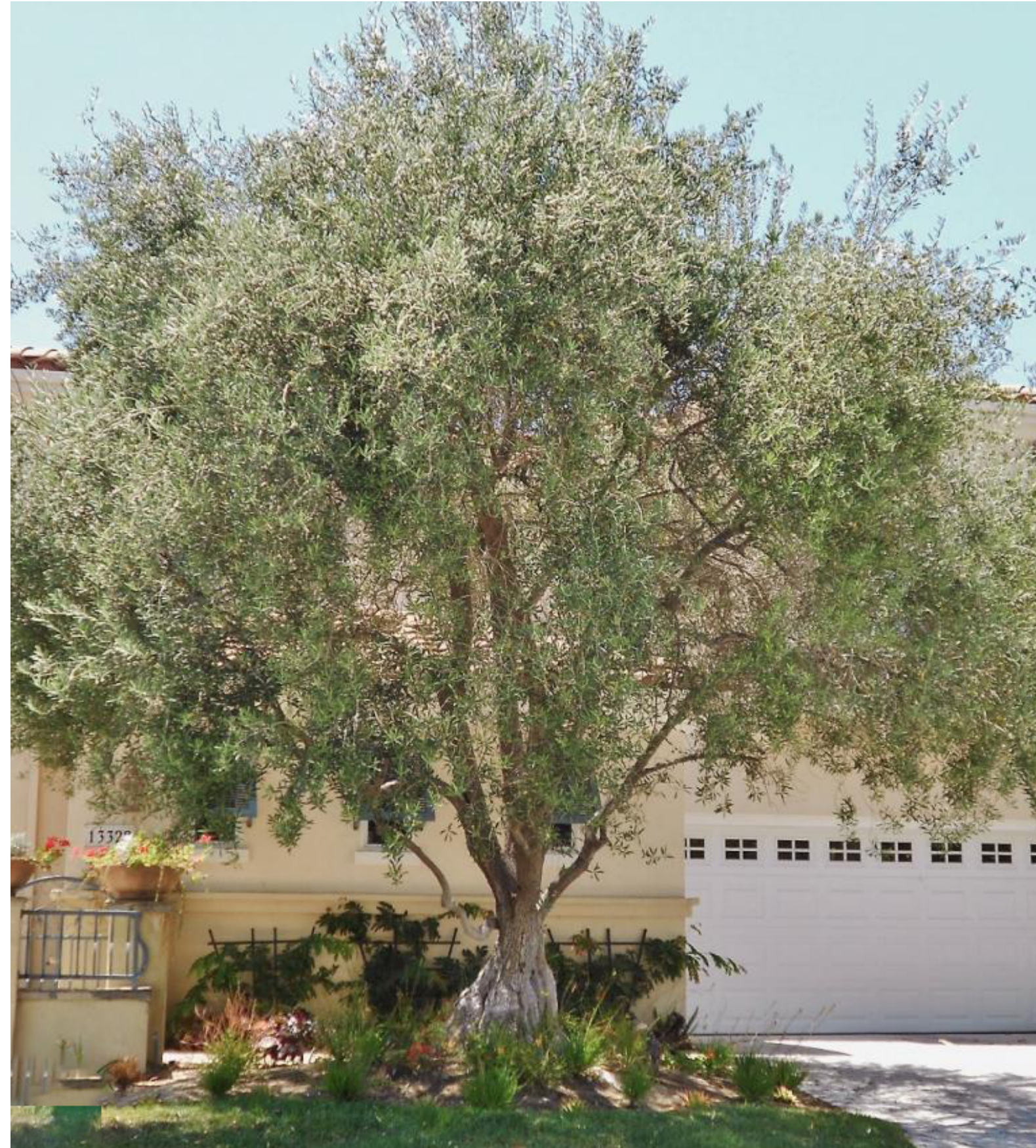
Parque de Magallanes Seville, Spain
Guillermo Vazquez Consuegra

Tree References

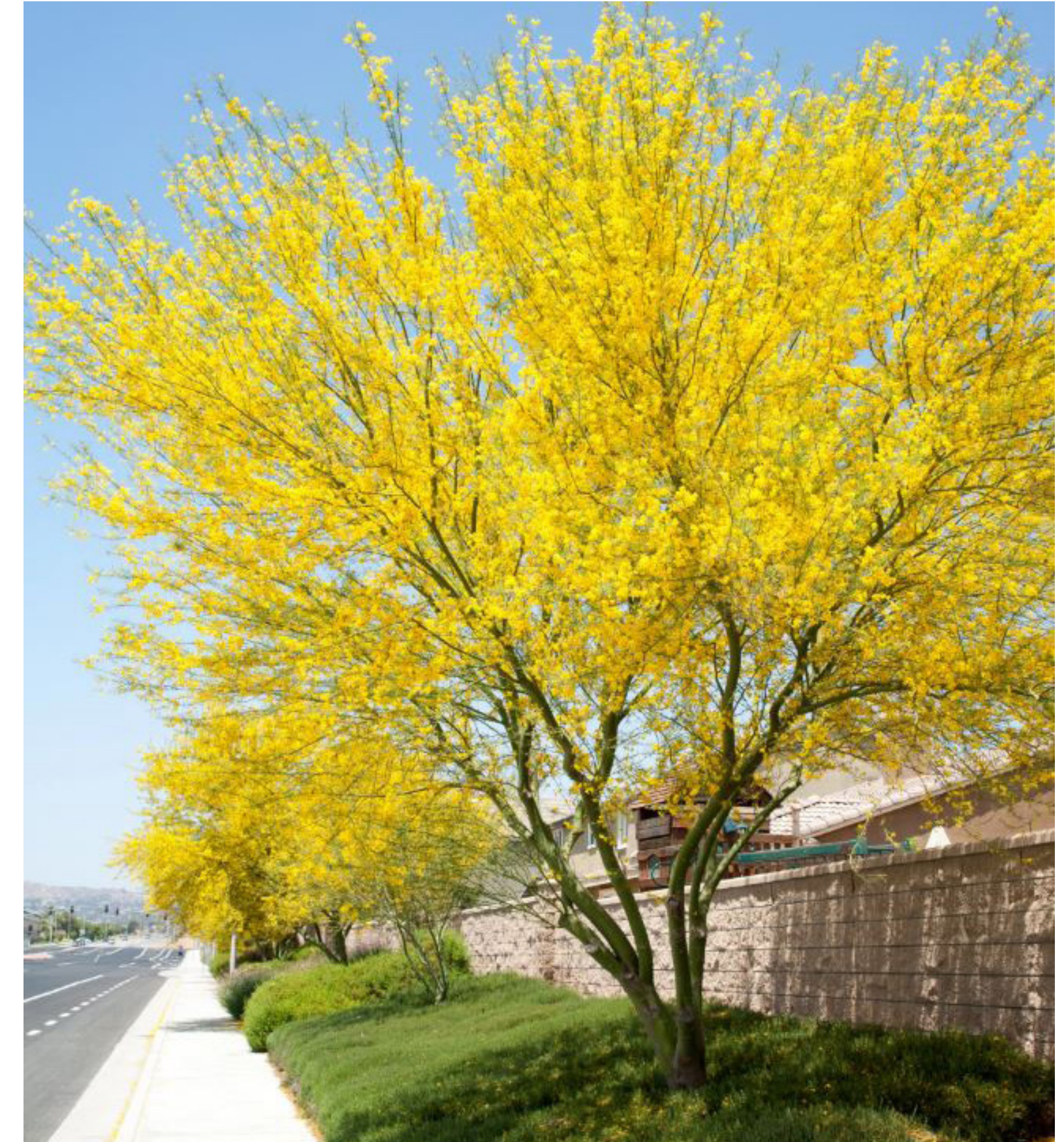
Desired Size: +/- 30' crown diameter, 25'-40' tall



Fraxinus Velutina
Velvet Ash



Olea Europaea 'Swan Hill'
Swan Hill Fruitless Olive

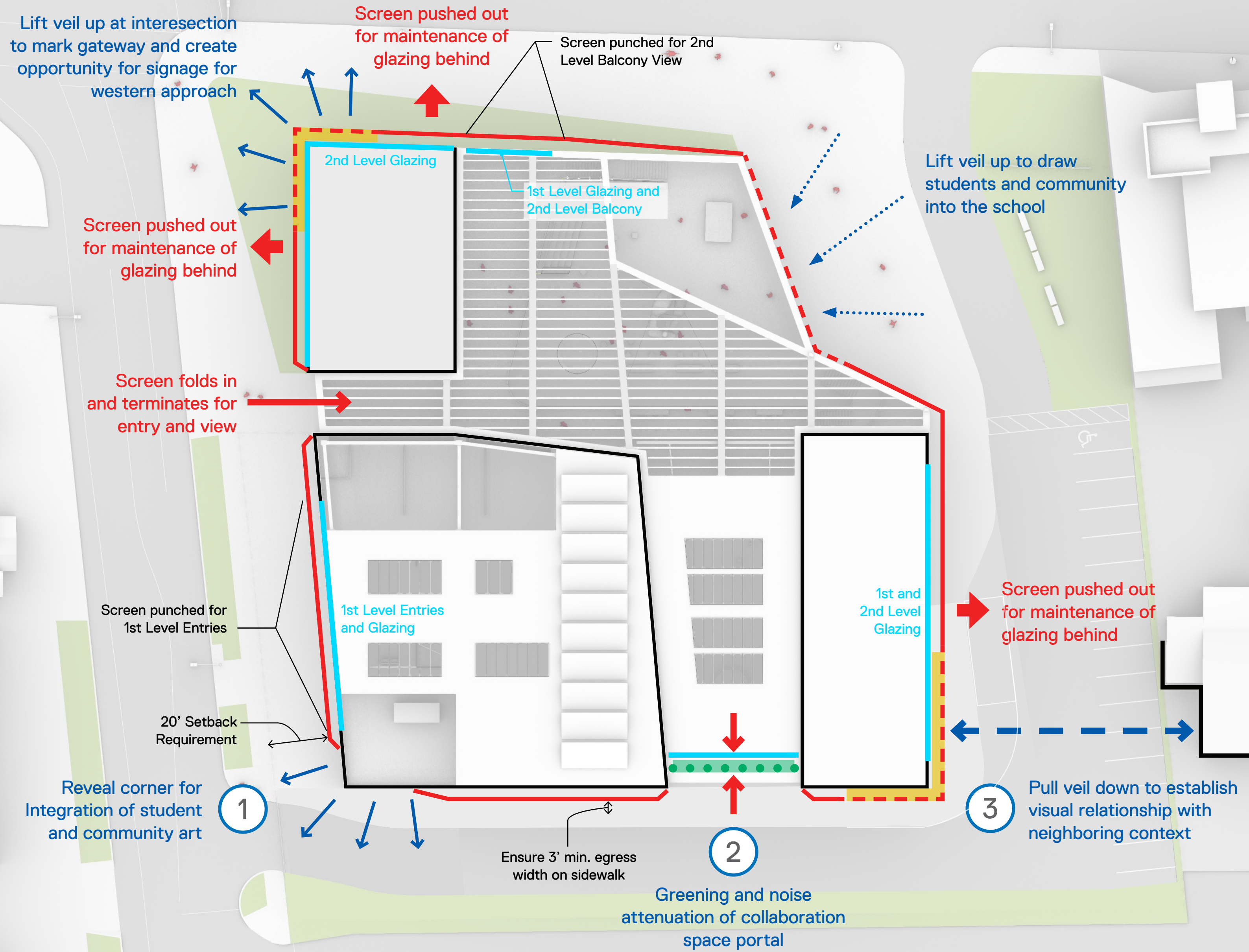


Parkinsonia 'Desert Museum'
Desert Museum Palo Verde

Bay Street Elevation Design Updates

- ① Integration of student and community art
- ② Introduce green facades where possible
- ③ Look to establish a visual relationship with the neighboring context

Facade Articulation Strategies



View of Southwest Corner - 100% SD



View of Southwest Corner - 100% SD



1 Integration of Artwork







AR



AR



SANTA ANA Art Complex



2 Introduce Green Facade



2 Introduce Green Facade





3 Visual Relationship to Neighbor



3 Visual Relationship to Neighbor



Peak of adjacent residential property

Second Floor Plan



Lifted Corner at Pico & 14th



Eastern Approach from Bay Street



Eastern Approach from Bay Street
Wood Fence Option



New tall planting within project boundary

New 8'-tall boundary fence

Eastern Approach from Bay Street
Brick Wall Option

New tall planting within
project boundary

New 8'-tall
boundary fence



Thank You
