
**Welcome to the
Santa Monica College Airport Campus
Long Range Master Plan**

Community Visioning Session #1

Tuesday, March 29
Wednesday, March 30
7:00 pm – 9:00 pm

Visioning Session
Santa Monica College Airport Campus Long Range Master Plan

WWC
OT
ARCHITECTURE
PLANNING
FORENSICS
INTERIORS



Blair Seibert, AIA



Andrea C. Gehring, AIA



Gretchen Wahab, CID



Ben Levin, AIA



Lisa Munoz



Yeva Arutyunyan

Visioning Session

Santa Monica College Airport Campus Long Range Master Plan

Community Visioning Session Goal:

Provide a forum for residents to share their vision for and concerns about the Airport Campus

Facilitate focused community discussion sessions & promote the constructive sharing of ideas

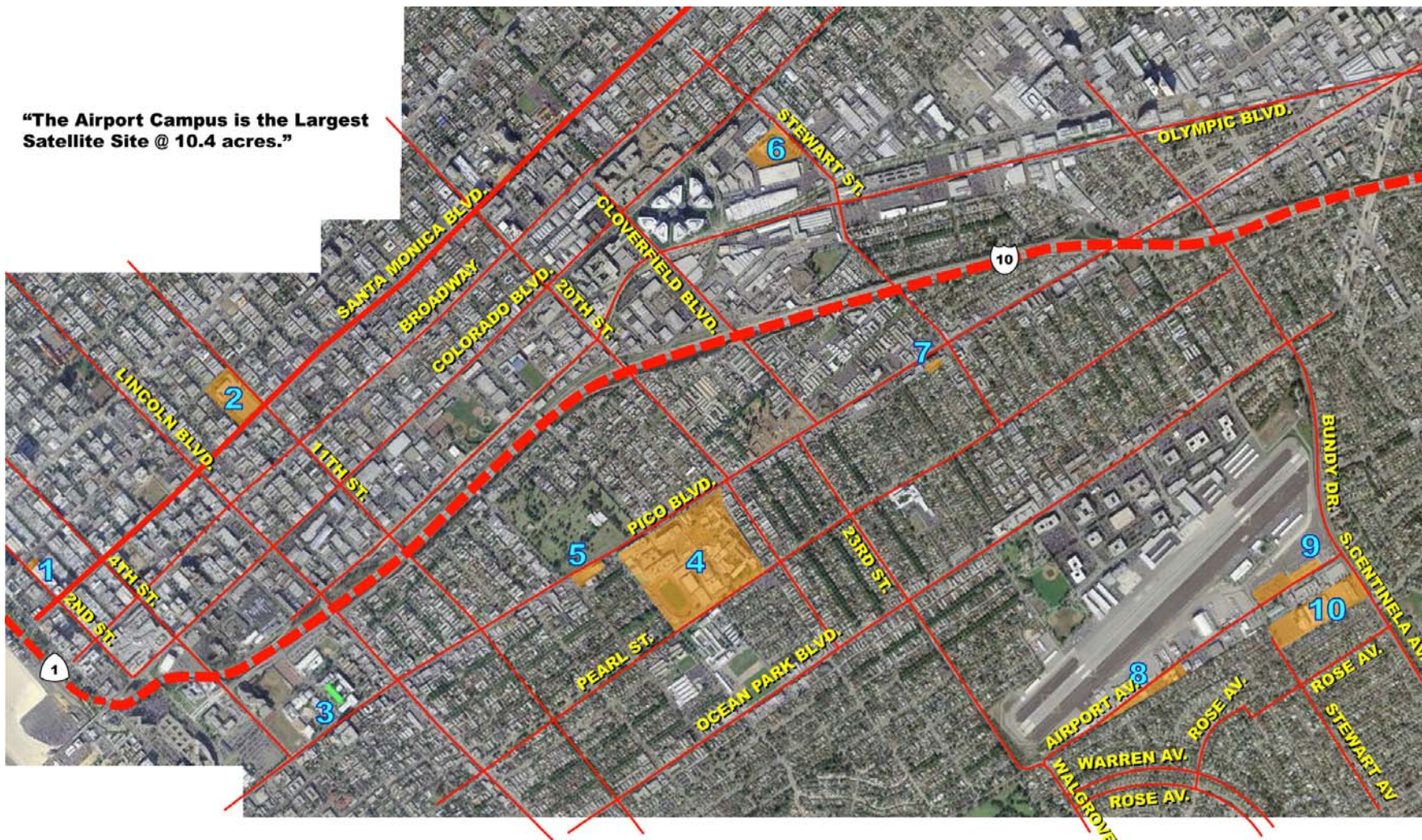
Include the community in the Airport Campus Master Plan process... this is the first of at least three community meetings

Integrate your vision into the final Airport Campus Site Plan proposal

Santa Monica College Overview

Viewing Session
Santa Monica College Airport Campus Long Range Master Plan

“The Airport Campus is the Largest Satellite Site @ 10.4 acres.”



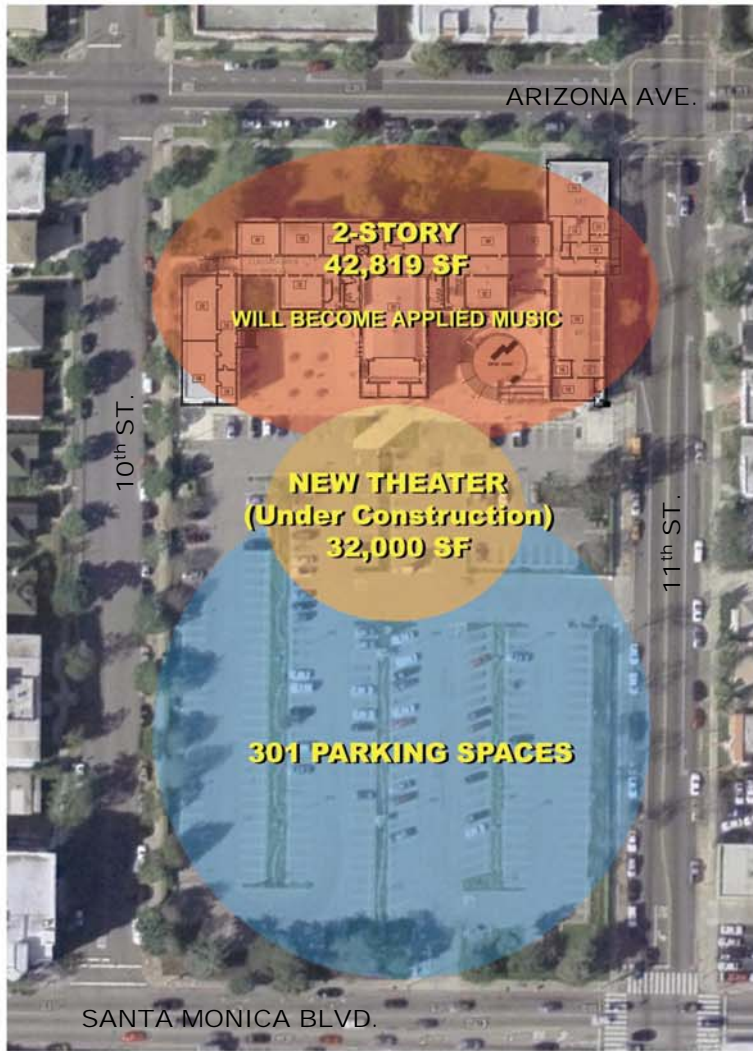
1. Emeritus College 2. Madison Campus 3. Santa Monica High School 4. Santa Monica College Main Campus 5. Vacant Lot @14th & Pico Blvd.
 6. Academy of Entertainment and Technology 7. Administration 8. Art Campus 9. Airport Shuttle Parking 10. Airport Campus



ENLARGED AERIAL OF SANTA MONICA CAMPUSES & SITES

Visioning Session

Santa Monica College Airport Campus Long Range Master Plan



MADISON CAMPUS



SANTA MONICA CAMPUSES SITE PLAN

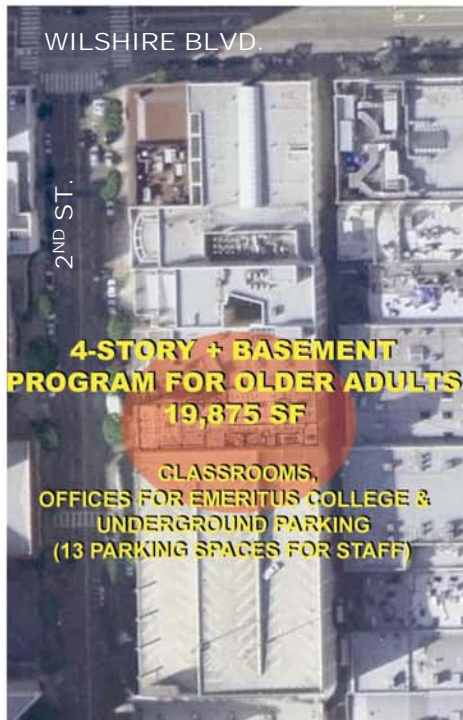
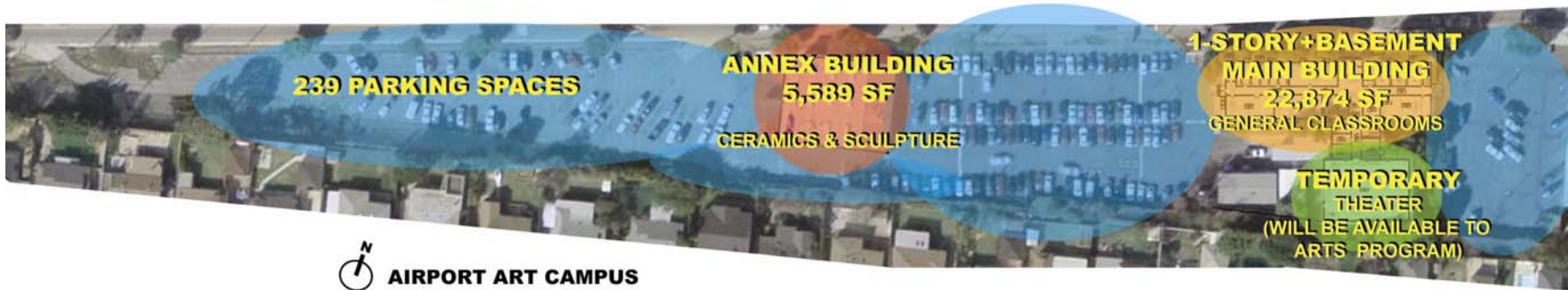


ACADEMY OF ENTERTAINMENT AND TECHNOLOGY CAMPUS

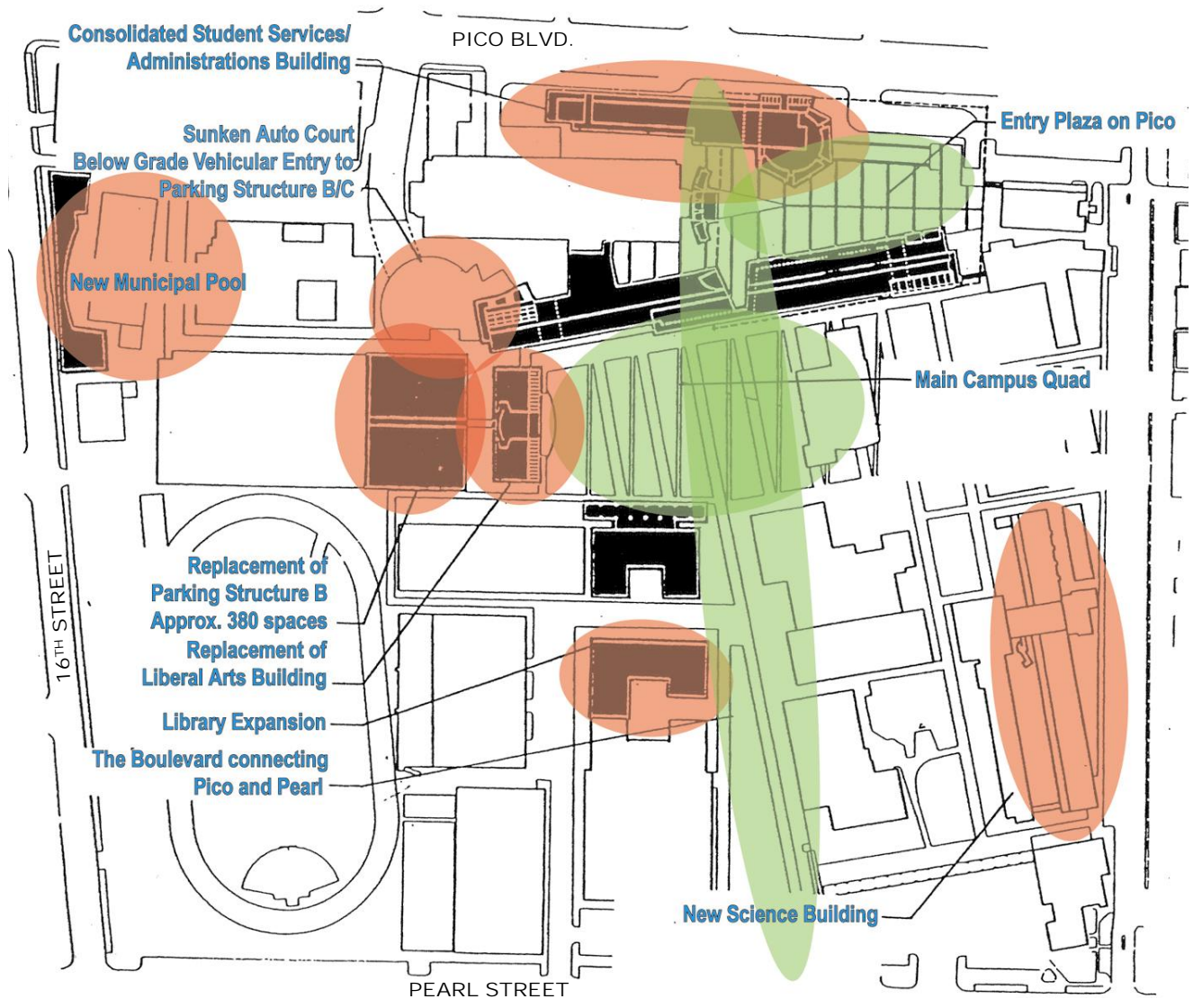


Visioning Session

Santa Monica College Airport Campus Long Range Master Plan



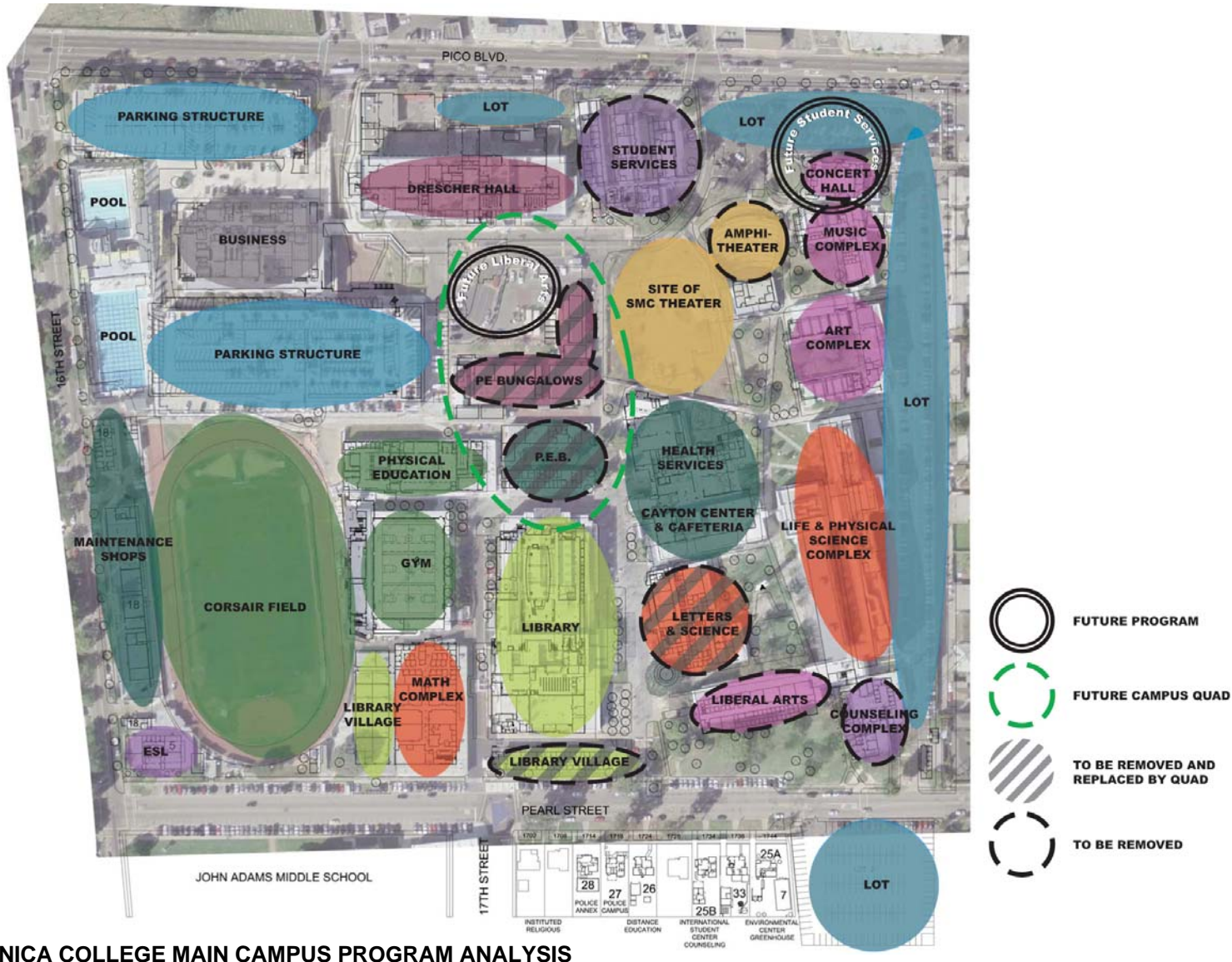
SANTA MONICA CAMPUSES SITE PLAN



FUNDED COMPONENTS OF 1998 MASTER PLAN

Visioning Session

Santa Monica College Airport Campus Long Range Master Plan



SANTA MONICA COLLEGE MAIN CAMPUS PROGRAM ANALYSIS

Visioning Session

Santa Monica College Airport Campus Long Range Master Plan



ENLARGED AERIAL SITE PHOTO & PROPOSED PARK

Visioning Session

Santa Monica College Airport Campus Long Range Master Plan



Airport Campus Site Improvements

Removed 100,000 square foot building

Constructed new sound wall on south and east

Removed overhead power lines

Constructed a new roadway to tie upper and lower lots

Planted more than 200 new trees

Santa Monica College Shuttle

Began operating in 1988

Improves traffic around SMC main campus

Replaces parking lost in 1994 earthquake

Mitigates parking displacement due to 1998 preferential parking expansion

Transports 1,700 students each way daily

Programs at the Airport Campus starting in 2005

- **Health Sciences:** Registered Nurse (AA Degree & Transfer)
Contract training with area hospitals
- **Education:** Early Childhood Development (AA Degree & Transfer)
Future K-12 teacher courses
Teacher professional development
Family literacy
- **Continuing Education:** Continuing Education credit for professionals
Courses for professional development
- **Community Education:** Courses for personal interest
- **General Education:** Courses to meet transfer requirements



OPTION A: SURFACE PARKING



Viewing Session

Santa Monica College Airport Campus Long Range Master Plan



OPTION B: COLLECT SURFACE PARKING INTO STRUCTURED PARKING

Viewing Session
Santa Monica College Airport Campus Long Range Master Plan





OPTION C: SHUTTLE PARKING & SURFACE PARKING CONSOLIDATED IN PARKING STRUCTURE

Visioning Session

Santa Monica College Airport Campus Long Range Master Plan



**Santa Monica College Faculty & Staff
Visioning Session #1 for the Airport Campus**

Santa Monica College Library
February 25, 2005

Visioning Session
Santa Monica College Airport Campus Long Range Master Plan

WWC
OT
ARCHITECTURE
PLANNING
FORENSICS
INTERIORS

SMC Faculty & Staff Visioning Session Goal:

Provide a forum for Santa Monica College administration, faculty and staff to share their vision for the potential program occupants, identity and functionality of the Airport Campus

Visioning Session Questions:

1. What programs need to grow?
2. What programs need to modernize?
3. What portions of programs could be moved to the Airport Campus?
4. What programs are being displaced from changes on campus?
5. What campus support spaces could be relocated?

Visioning Session Discussion

- **Programs at Airport Campus starting in 2005**

Health Sciences

Education

Continuing Education

Community Education

General Education

- **Potential program relocation candidates (growth/modernization)**

Cinema / Broadcasting / Communication

Fashion Merchandising

Nursing & Health Sciences

- **Airport Campus Recommendations**

Relocate **stand-alone programs**

Establish the **Career Opportunity Center** at the Campus

Create a **campus identity** based on program offerings

Create a **pedestrian and neighborhood friendly campus**

Highlight **innovative teaching strategies**

Provide **amenities** such as a student bookstore and student food service

Community Visioning Session

Visioning Session

Santa Monica College Airport Campus Long Range Master Plan



Community Visioning Session

Divide into discussion groups

Nominate a group recorder & presenter

Discuss each question & document your group's vision

Regroup to share information

Reminders

Participation by everyone is encouraged... we want to hear from you

Please be respectful of one another's vision, thoughts and opinions

Be creative!

Community Visioning Session Questions

1. What parking, traffic and circulation questions / concerns do you have for the SMC Airport Campus traffic consultant?
2. What is your vision for the planned green space within the SMC Airport Campus?
3. What amenities and/or educational programs can Santa Monica College provide at the Airport Campus to support your community?
4. What is the single most important issue related to the Airport Campus that you would like for Santa Monica College to address in future meetings?

Next Steps & Future Meetings

Viewing Session
Santa Monica College Airport Campus Long Range Master Plan

WWCOT - Next Steps

Review and analyze information collected during the Community Visioning Session

Prepare the “Community Visioning Session Findings” document
(will be posted on the SMC Facilities Website at www.smc.edu/facilities_airport)

Develop Site Plan Alternatives incorporating the Community Visioning Session Findings

Future Meetings

Community Meeting #2: Presentation & Work Group Discussion of Airport Campus Site Plan Alternatives

Community Meeting #3: Presentation of Recommended Airport Campus Site Plan

On-campus meetings with Santa Monica College administration, faculty and staff

Additional meetings will be held in connection with the Environmental Review Process

Visioning Session
Santa Monica College Airport Campus Long Range Master Plan

We appreciate your time & participation... thank you!!

Viewing Session
Santa Monica College Airport Campus Long Range Master Plan

WWC
OT
ARCHITECTURE
PLANNING
FORENSICS
INTERIORS