

# **SANTA MONICA COLLEGE BUNDY CAMPUS Long Range Master Plan**

## **Board of Trustees Meeting**

July 6, 2005



Andrea Cohen Gehring,  
AIA, LEED®AP  
*Design Principal*



Blair Seibert, AIA,  
LEED®AP  
*Project Manager, Senior  
Associate*



Gretchen Wahab, CID,  
LEED®AP  
*Director of Strategic  
Planning*

## Project Team

SANTA MONICA COLLEGE BUNDY CAMPUS Long Range Master Plan



- Established in 1964
- Architectural Design
- Interior Design
- Strategic Planning
- Master Planning
- Architectural Forensics
- Construction Support
- Diverse Staff/MBE
- Intensive Service by 14 Principals
- 100 People in 5 Offices

# Overview of Visioning Sessions

- Faculty & Staff Steering Committee Visioning Session #1  
February 25, 2005
- Community Visioning Sessions  
March 29, 2005 – Santa Monica Community  
March 30, 2005 – Mar Vista Community
- Faculty & Staff Steering Committee Visioning Session #2  
April 29, 2005

Visioning Session

SANTA MONICA COLLEGE BUNDY CAMPUS Long Range Master Plan

WWC  
OT  
ARCHITECTURE  
PLANNING  
FORENSICS  
INTERIORS

# Visioning Session Goals

## Faculty & Staff Steering Committee Visioning Session #1

- Provide a forum for Santa Monica College administration, faculty and staff to share their vision for the potential program occupants, identity and functionality of the Bundy Campus

## Community Visioning Sessions

- Provide a forum for residents to share their vision for and concerns about the Bundy Campus
- Facilitate focused community discussion sessions & promote the constructive sharing of ideas
- Include the community in the Bundy Campus Master Plan process... this is the first of several community meetings
- Integrate the community's vision into the final Bundy Campus Site Plan proposal

## Faculty & Staff Steering Committee Visioning Session #2

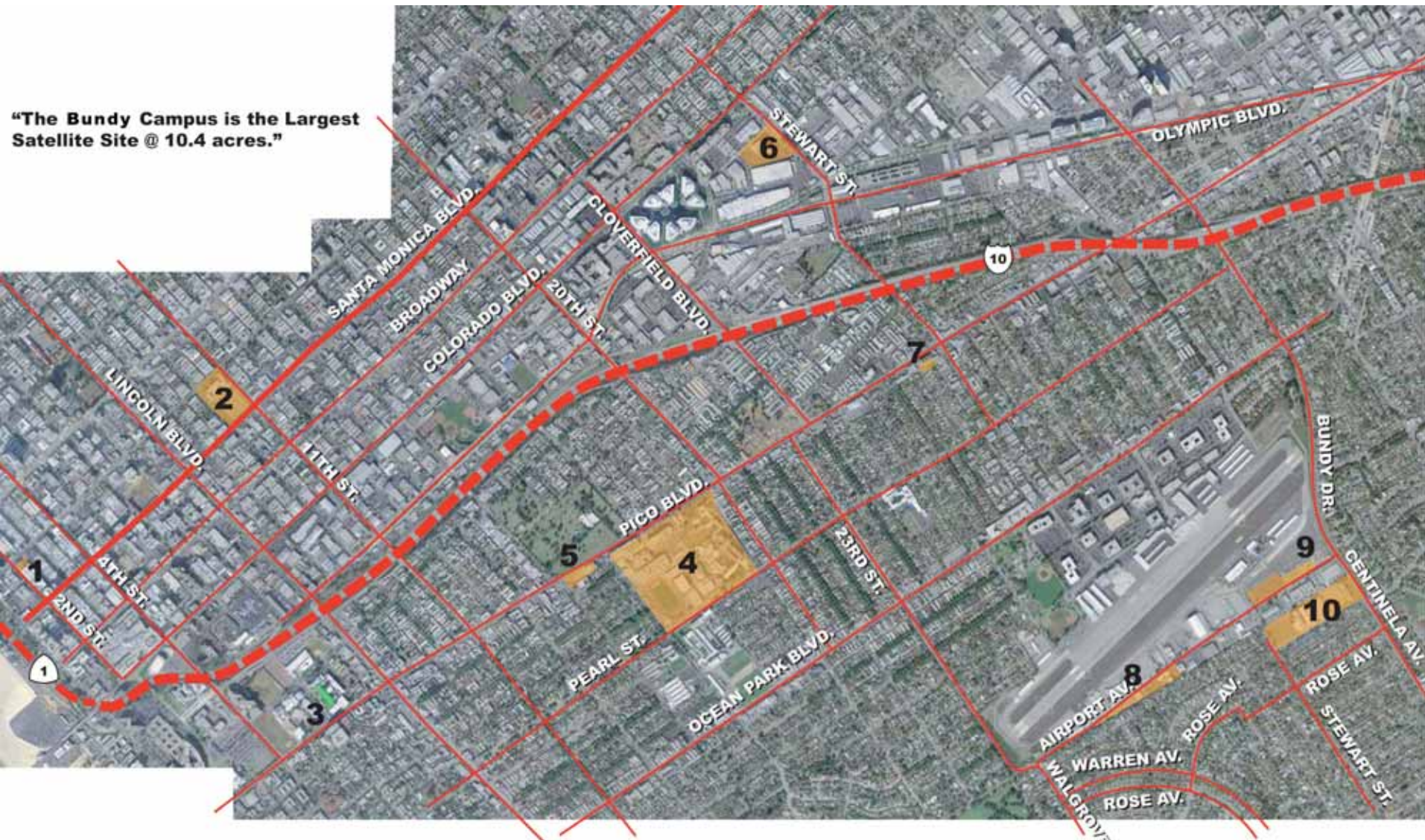
- Reach consensus on Santa Monica College Bundy Campus Programs

Visioning Session

SANTA MONICA COLLEGE BUNDY CAMPUS Long Range Master Plan

# Santa Monica College Overview

**"The Bundy Campus is the Largest Satellite Site @ 10.4 acres."**



1. Emeritus College 2. Madison Campus 3. Santa Monica High School 4. Santa Monica College Main Campus 5. Vacant Lot @14th & Pico Blvd.  
 6. Academy of Entertainment and Technology 7. Administration 8. Art Campus 9. Airport Shuttle Parking 10. Bundy Campus



**ENLARGED AERIAL OF SANTA MONICA CAMPUSES & SITES**

# SMC Overview

## SANTA MONICA COLLEGE BUNDY CAMPUS Long Range Master Plan



MADISON CAMPUS



SANTA MONICA CAMPUSES SITE PLAN

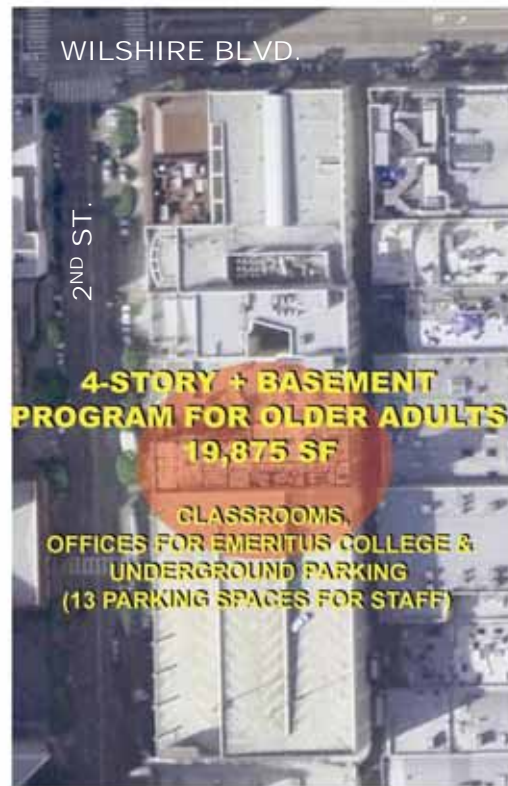


ACADEMY OF ENTERTAINMENT AND TECHNOLOGY CAMPUS

# SMC Overview

## SANTA MONICA COLLEGE BUNDY CAMPUS Long Range Master Plan

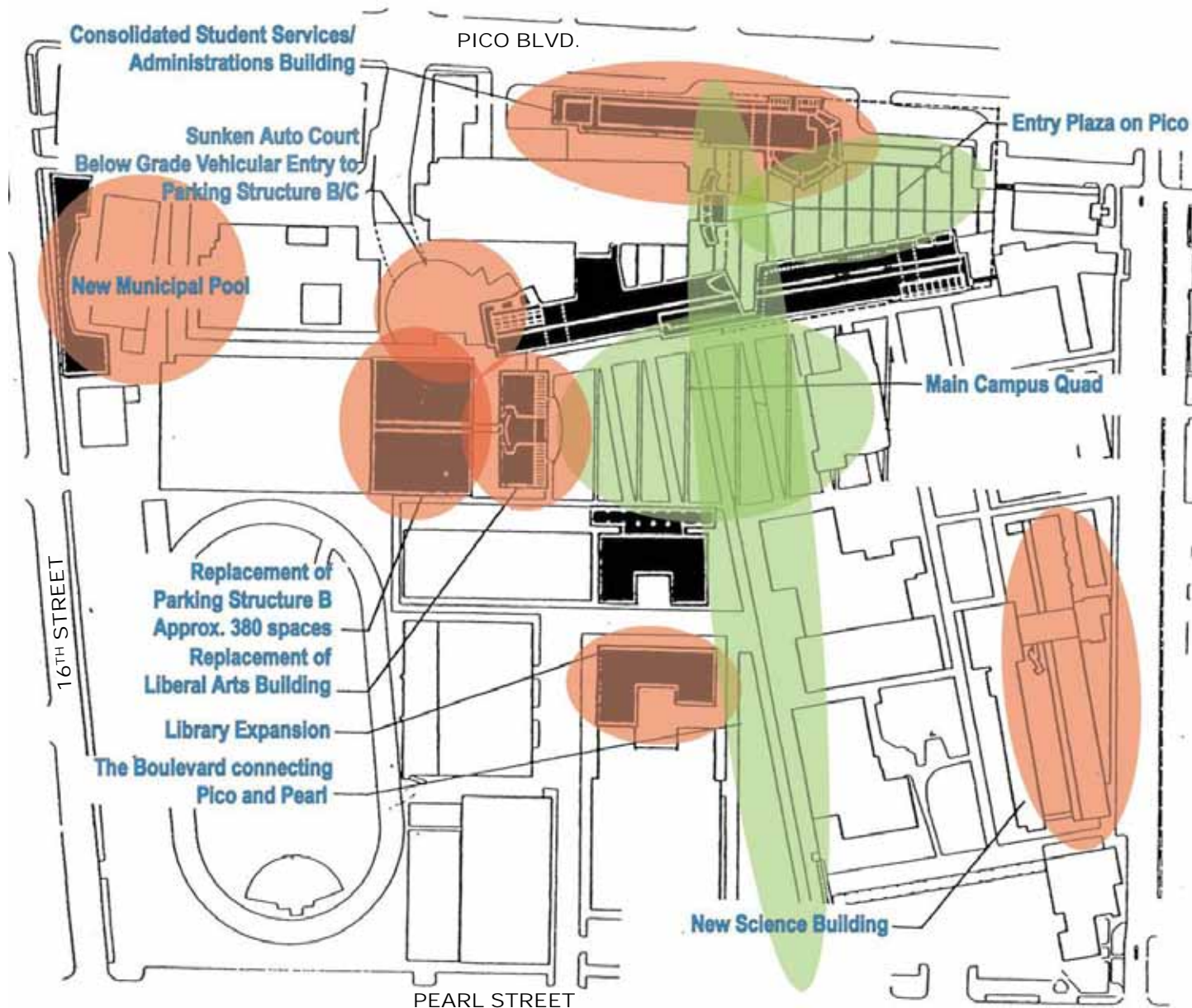




SANTA MONICA CAMPUSES SITE PLAN

# SMC Overview

## SANTA MONICA COLLEGE BUNDY CAMPUS Long Range Master Plan

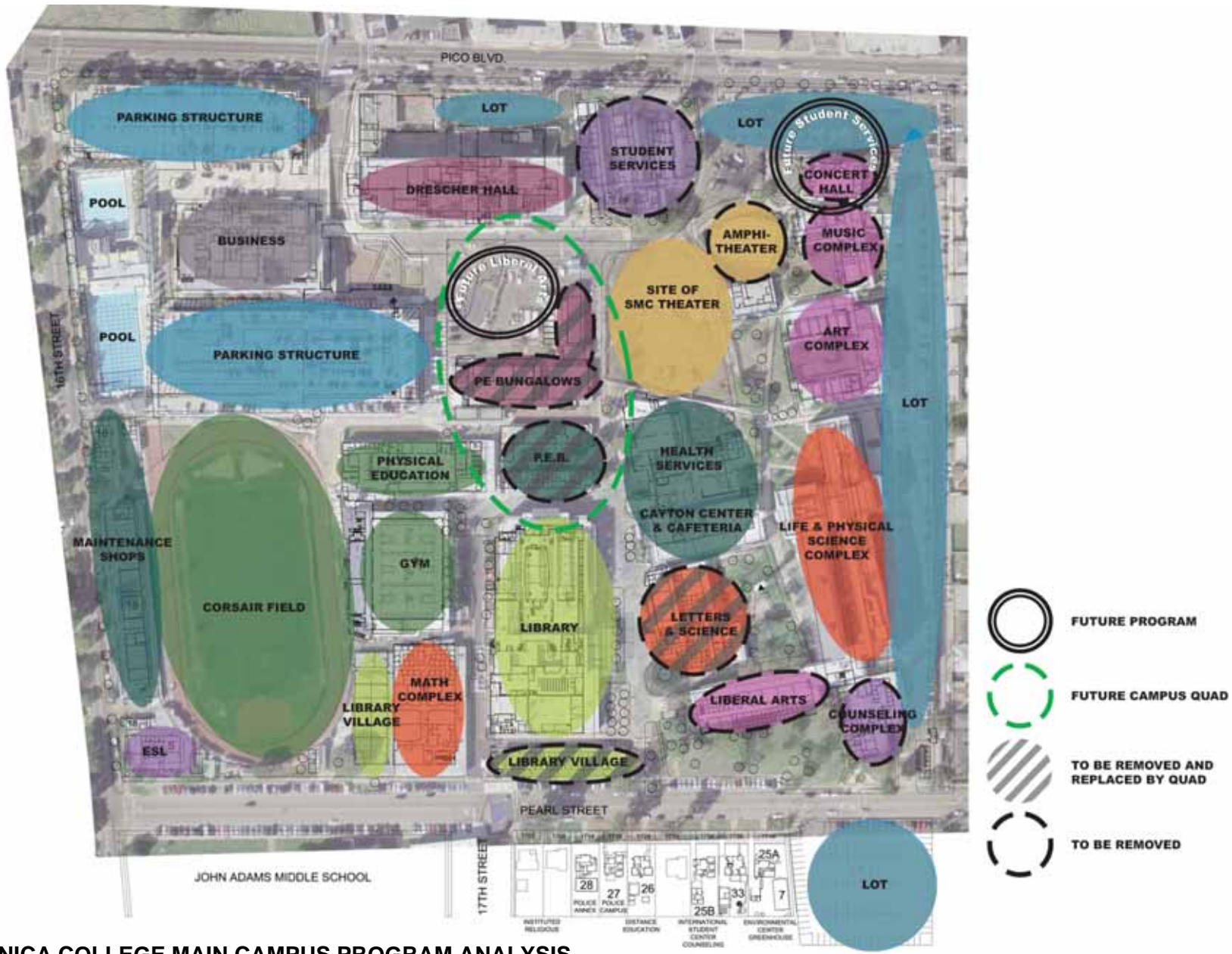


FUNDED COMPONENTS OF 1998 MASTER PLAN



# SMC Overview

## SANTA MONICA COLLEGE BUNDY CAMPUS Long Range Master Plan



SANTA MONICA COLLEGE MAIN CAMPUS PROGRAM ANALYSIS

# SMC Overview

## SANTA MONICA COLLEGE BUNDY CAMPUS Long Range Master Plan



ENLARGED AERIAL SITE PHOTO & FUTURE CITY PARK



# SMC Overview

## SANTA MONICA COLLEGE BUNDY CAMPUS Long Range Master Plan

## Bundy Campus Site Improvements

Removed 100,000 square foot building

Constructed new sound wall on south and west

Removed overhead power lines

Constructed a new roadway to tie upper and lower lots

Planted more than 200 new trees

SMC Overview

## Santa Monica College Shuttle

Began operating in 1988

Improves traffic around SMC main campus

Replaces parking lost in 1994 earthquake

Mitigates parking displacement due to 1998 preferential parking expansion

Transports 1,700 students each way daily at start of semester

SMC Overview

## Programs at the Bundy Campus starting in 2005

- **Health Sciences:** Registered Nurse (AA Degree & Transfer)  
Contract training with area hospitals
- **Education:** Early Childhood Development (AA Degree & Transfer)  
Future K-12 teacher courses  
Teacher professional development  
Family literacy
- **Continuing Education:** Continuing Education credit for professionals  
Courses for professional development
- **Community Education:** Courses for personal interest
- **General Education:** Courses to meet transfer requirements

SMC Overview



OPTION A: SURFACE PARKING



# SMC Overview

## SANTA MONICA COLLEGE BUNDY CAMPUS Long Range Master Plan





OPTION B: COLLECT SURFACE PARKING INTO STRUCTURED PARKING



# SMC Overview

## SANTA MONICA COLLEGE BUNDY CAMPUS Long Range Master Plan



OPTION C: SHUTTLE PARKING & SURFACE PARKING CONSOLIDATED IN PARKING STRUCTURE



SMC Overview

SANTA MONICA COLLEGE BUNDY CAMPUS Long Range Master Plan

**Faculty & Staff Steering Committee  
Visioning Session #1 Overview  
February 25, 2005**

**Visioning Session**

**SANTA MONICA COLLEGE BUNDY CAMPUS Long Range Master Plan**

## SMC Faculty & Staff Steering Committee Discussion Questions

1. What programs need to grow?
2. What programs need to modernize?
3. What portions of programs could be moved to the Bundy Campus?
4. What programs are being displaced from changes on campus?
5. What campus support spaces could be relocated?

# Proposed SMC Bundy Campus Programs

Programs	'05 Relocation	Grow	Modernize	Relocate
Art		X		X
Business		X	X	
Career Opportunity Center				X
Child Development	X			
Communications ( <i>Journalism</i> )			X	X
Communications ( <i>TV Broadcasting</i> )		X	X	X
Continuing Education	X	X		
Cosmetology ( <i>Spa</i> )		X	X	
Education / Teacher Academy		X		
Fashion Merchandising		X	X	X
General Education		X		
Kinesiology, Dance & Recreation				X
Library Village Faculty Offices				X
Mailroom			X	X
Non-Credit Programs		X		
Nursing & Health Sciences	X	X	X	
OIS – Office Information Systems			X	X
Photography			X	X

Three Xs
  Two Xs
  One X

steering committee visioning overview

## Visioning Session

### SANTA MONICA COLLEGE BUNDY CAMPUS Long Range Master Plan

## SMC Bundy Campus Site Opportunities

- Relocate **stand-alone programs**
- Create a **campus identity** based on program offerings
- Create a **pedestrian and neighborhood friendly campus**
- Highlight **innovative teaching strategies**
- Provide **amenities** such as a student bookstore and student food service

**Community Visioning Sessions  
Overview  
March 29 & 30, 2005**

**Visioning Session**

**SANTA MONICA COLLEGE BUNDY CAMPUS Long Range Master Plan**

## Community Discussion Questions

1. What **parking, traffic and circulation** questions / concerns do you have for the SMC Bundy Campus traffic consultant?
2. What is your vision for the planned **green space** within the SMC Bundy Campus?
3. What **amenities and/or educational programs** can Santa Monica College provide at the Bundy Campus to support your community?
4. What is the single most important issue related to the Bundy Campus that you would like for Santa Monica College to address in future meetings?



## Community Response: **Traffic**

- Increased traffic in residential neighborhoods adding to existing traffic problems
- Locations of entry / egress on the Bundy Campus and impact on local traffic circulation
- Transportation alternatives / incentives  
(i.e. shuttle parking adjacent to freeway, loaner bicycles for use between campuses)

## Community Response: Parking

- Adequate supply of free parking to eliminate student parking in residential neighborhoods
- Security of surface parking and/or parking structure
- Community access to parking to support use of green space, programs and amenities

## Community Response: Green Space

- Maximize real green area while providing adequate parking
- Desirable green space features:
  - professionally designed landscape / xeriscape
  - walking & jogging pathways
  - seating / benches
  - community gardens
  - arboretum
  - dog park
- Security, safety and hours of green spaces  
(i.e. SMC patrol, loiterers, jet fuel fumes/pollution, late-evening noise)

## Community Response: Programs / Amenities

- Self-contained programs with general education requirements provided on campus
- Provide adequate expansion space for programs relocating to Bundy Campus in June 2005
- Desirable Programs
  - community classes, outreach and mentoring
  - emeritus classes
  - physical education, Yoga classes
  - environmental programs, alternative fuel technologies
  - arts-oriented classes

# **Additional Community Dialogue**

**Denny Zane, Urban Dimensions**

## Draft SMC Proposal to Reduce College-Related Traffic and Congestion in Impacted Communities

1. Continuing collaboration with neighbors
2. Current traffic reduction efforts continue plus new efforts
3. Enrollment management at main campus
4. Expand shuttle program
5. Expand on-campus parking
6. Promote transit use by students and staff
7. Promote bicycle and pedestrian trips
8. Manage college peak traffic to avoid community peak traffic
9. Develop incentives for trip reductions by students and staff
10. Expand online course offerings
11. Develop Malibu satellite campus

Community Outreach

**Faculty & Staff Steering Committee  
Visioning Session #2 Overview  
April 29, 2005**

**Visioning Session**

**SANTA MONICA COLLEGE BUNDY CAMPUS Long Range Master Plan**

**WWC  
OT**  
ARCHITECTURE  
PLANNING  
FORENSICS  
INTERIORS

# Program Confirmation Exercise

GOAL: Reach consensus on SMC Bundy Campus Programs

Proposed SMC Bundy Campus Programs		
AGREE	NEUTRAL	DISAGREE

Programs	'05 Relocation	Grow	Modernize	Relocate
Art		X		X
Business		X	X	
Career Opportunity Center				X
Child Development	X			
Communications ( <i>Journalism</i> )			X	X
Communications ( <i>TV Broadcasting</i> )		X	X	X
Continuing Education	X	X		
Cosmetology ( <i>Spa</i> )		X	X	
Education / Teacher Academy		X		
Fashion Merchandising		X	X	X
General Education		X		
Kinesiology, Dance & Recreation				X
Library Village Faculty Offices				X
Mailroom			X	X
Non-Credit Programs		X		
Nursing & Health Sciences	X	X	X	
OIS – Office Information Systems			X	X
Photography			X	X

Bundy campus programs discussion

Visioning Session



# Programs Unanimously Approved for Relocation:

- Child Development / Education / Teacher Academy
- Communications - Cinema (future)
- Communications - Journalism (future)
- Communications - TV Broadcasting (future)
- Continuing Education (2005)
- Non-Credit Programs (2005)
- Nursing / Health Sciences (2005)

Proposed SMC Bundy Campus Programs		
AGREE	NEUTRAL	DISAGREE
Nursing & Health Sciences		Art
Child Development June 2005		Library Village Faculty Offices
Warehouse		Kinesiology, Dance & Recreation
General Education June 2005		Cosmetology / Spa
Communications TV Broadcasting & Cinema	Career Opportunity Center	Education / Teacher Academy
Communications Journalism (Except Corsaire)	Fashion Merchandising	Mailroom
Office Information Systems (OIS)		Photography
Learning (Plato) Lab		
Business (Select Programs)		
Non-Credit Programs (Programs Office)		
Continuing Education June 2005		

Proposed SMC Bundy Campus Programs		
AGREE	NEUTRAL	DISAGREE
Continuing Education June 2005		Photography
Non-Credit Programs		Art
Nursing & Health Sciences June 2005	Business Portions / Selected Programs	Kinesiology, Dance & Recreation
Education / Teacher Academy June 2005	Office Information Systems (OIS) Non-Credit	Library Village Faculty Offices
Child Development		Cosmetology / Spa
Communications Journalism		

Proposed SMC Bundy Campus Programs		
AGREE	NEUTRAL	DISAGREE
Education / Teacher Academy	Business	Career Opportunity Center
Continuing Education June 2005	Office Information Systems (OIS)-CSIS	Art
Nursing & Health Sciences June 2005	Communications Speech	Photography
Communications Journalism Reconfigured	General Education June 2005	Library Village Faculty Offices
Communications TV Broadcasting Reconfigured		Kinesiology, Dance & Recreation
Communications Cinema		Mailroom

Bundy campus programs discussion

Visioning Session

# Proposed Long Range Master Plan

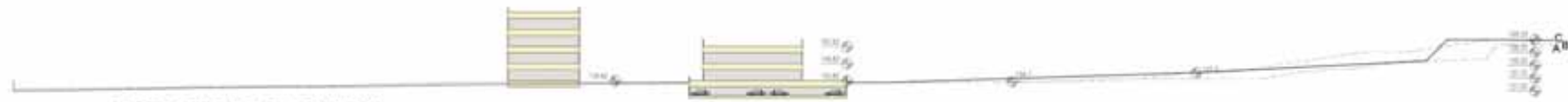


# Initial Phase Plan

SANTA MONICA COLLEGE BUNDY CAMPUS Long Range Master Plan



PROPOSED PLAN



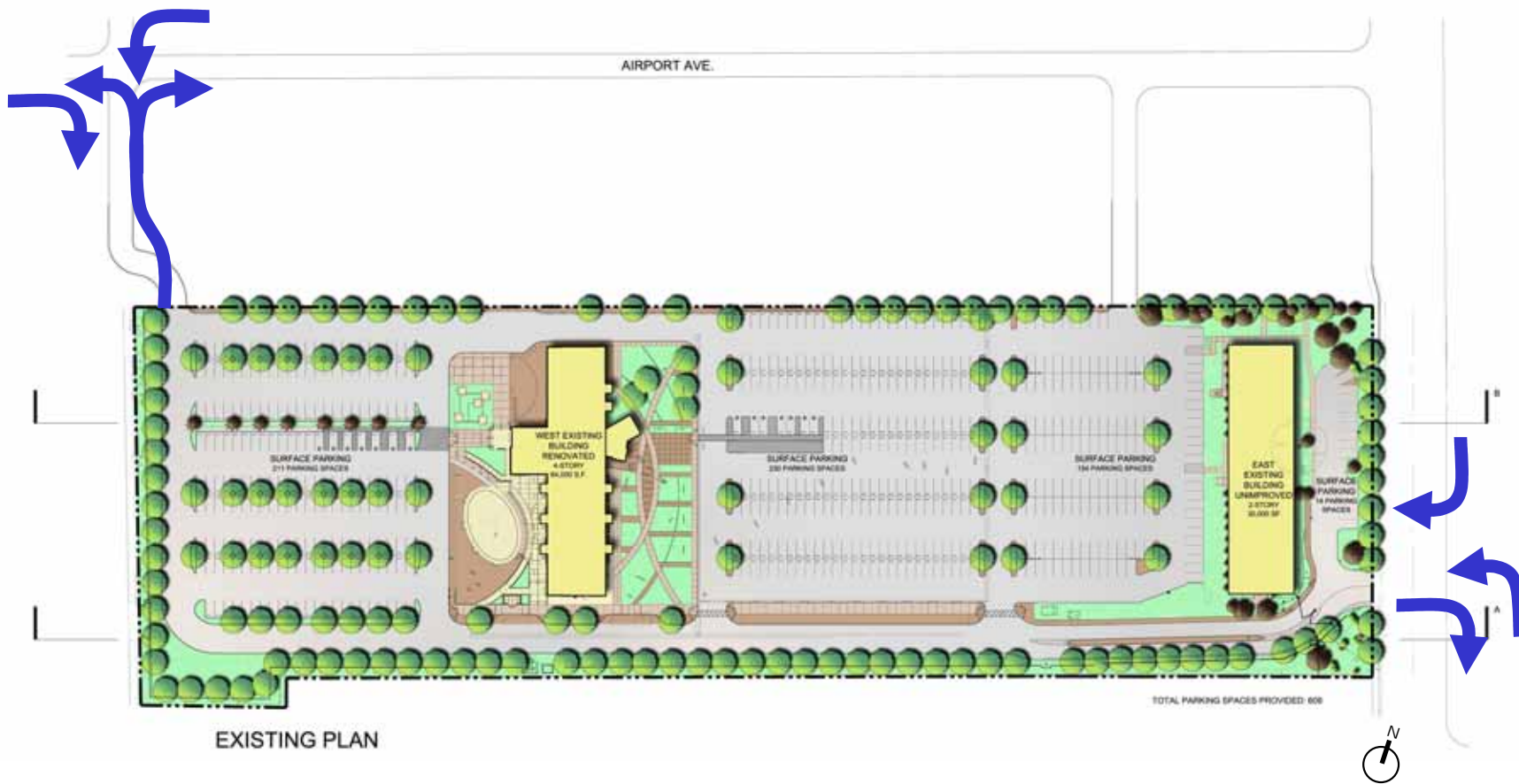
PROPOSED SECTION

# Final Phase Plan

SANTA MONICA COLLEGE BUNDY CAMPUS Long Range Master Plan

# **Traffic Issues: Circulation, Parking & Street Impacts**

**Tom Gaul, Kaku Associates**



## ACCESS ALTERNATIVE 1

Traffic Issues



## ACCESS ALTERNATIVE 2

Traffic Issues



## ACCESS ALTERNATIVE 3

Traffic Issues



FALL 2005 CLASS SCHEDULE AT THE NEW SANTA MONICA COLLEGE BUNDY CAMPUS

CREDIT CLASS SCHEDULE (FALL 2005) - 30 STUDENTS PER CLASS														
Time	MW	TTh	TF	MTWTh	MT	TF	WTh	M	T	W	Th	F	S	SU
07:00-09:05								1			1			
07:30-09:35								1						
07:45-09:05								1	1					
08:15-09:20				2										
08:30-09:50	6	6												
08:30-10:35										1				
08:30-11:35									1		1			
09:00-10:30									1			1		
09:00-12:05					1			1						
09:15-11:20														
10:00-11:20	6	6												
10:00-11:50		1												
10:00-12:05								1						
10:00-12:25	2	2												
10:00-13:05	1													
10:45-12:50						1								
10:45-13:50	1													
11:30-12:50	3	3												
11:30-14:00							2							
11:30-14:35								1	1		1			
11:45-13:05	1													
12:00-13:30								1	1					
12:30-13:50		2												
12:30-15:35	1													
12:30-15:40								1						
12:45-14:05	1	3												
12:45-15:50	1	1												
13:00-14:20	3	3												
13:00-14:25								1						
13:00-14:30									1			1		
14:00-16:30					1									
14:15-15:35	3	2												
14:15-16:20									1					
14:30-15:50	3	2												
15:00-18:05								2	2	4	1			
15:40-17:40														
15:45-17:50										1				
15:45-18:50	1													
16:00-18:05											1			
17:00-19:05										1				
17:00-19:25	2	2												
17:45-19:50									1					
18:00-19:20		1												
18:30-20:35									2					
18:30-21:35								3	4	4	4			
18:45-21:50	1	1						1						
19:35-20:55	2	1												
19:35-22:00	2	2												

COMMUNITY EDUCATION NON-CREDIT CLASS SCHEDULE - 20 STUDENTS PER CLASS														
Time	MW	TTh	TF	MTWTh	MT	TF	WTh	M	T	W	Th	F	S	SU
09:00-12:00													4	
09:00-14:00													2	
09:00-15:00													2	
09:00-16:00													1	
09:00-17:00													2	
10:00-13:00													1	1
12:30-15:30													2	1
13:00-16:00													2	2
14:00-17:00													3	
18:30-21:30	2	2												

Traffic Issues

## PARKING SUPPLY AND DEMAND ESTIMATES

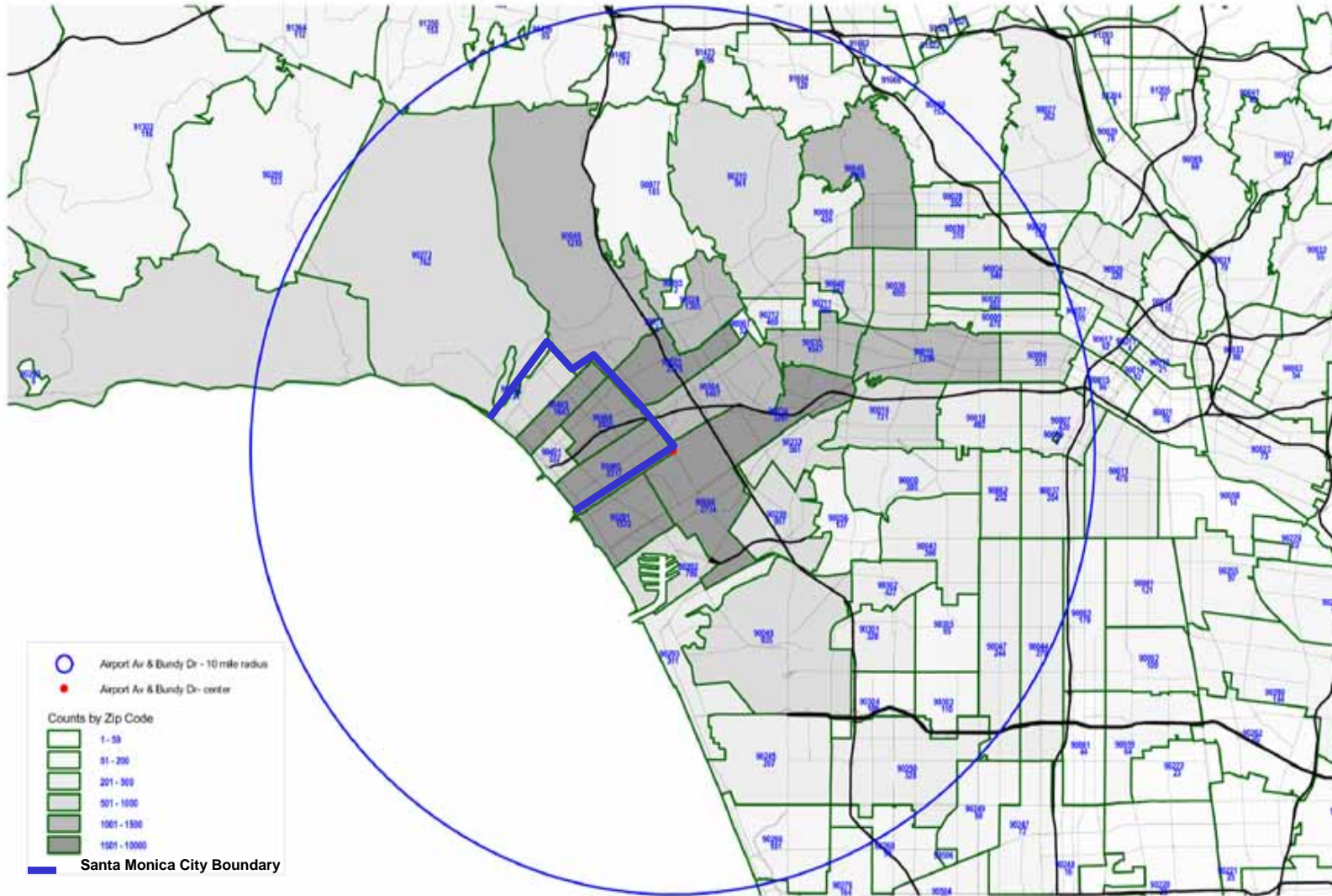
	Initial Phase		Final Phase
	PHASE 1A Fall 2005	PHASE 1B Fall 2007	PHASE 2 Fall 2010
Parking Supply	609	609	668
Total Estimated Parking Demand	320	409	631
Surplus Parking Available	289	200	37

Traffic Issues

## TRIP GENERATION ESTIMATES: Early Fall Semester

Phase	Size	Estimated Trip Generation		
		Daily Trips	AM Peak Hour	PM Peak Hour
			Total	Total
<b>PHASE 1A (Fall 2005)</b>				
<u><i>Four -Story Building</i></u> <u><i>Net New Trips</i></u>	1,747 daily users	2,989	258	90
<b>PHASE 1B (Fall 2007)</b>				
<u><i>Four -Story Building</i></u>	1,980 daily users	3,413	297	108
<u><i>Existing Two-Story Building</i></u>	30 employees	100	14	14
<u><i>Remote Main Campus Parking</i></u>	200 parking spaces	956	124	66
<u><i>Remove Ex. Shuttle Lot</i></u>	-508 parking spaces	-2,428	-315	-168
<u><i>Net New Trips</i></u>		2,041	121	20
<b>PHASE 2 (Fall 2010)</b>				
<u><i>Four -Story Building</i></u>	1,980 daily users	3,413	297	108
<u><i>New Two-Story Building</i></u>	1,013 daily users	1,783	160	65
<u><i>Remove Ex. Shuttle Lot</i></u>	-508 parking spaces	-2,428	-315	-168
<u><i>Net New Trips</i></u>		2,768	142	5

Traffic Issues



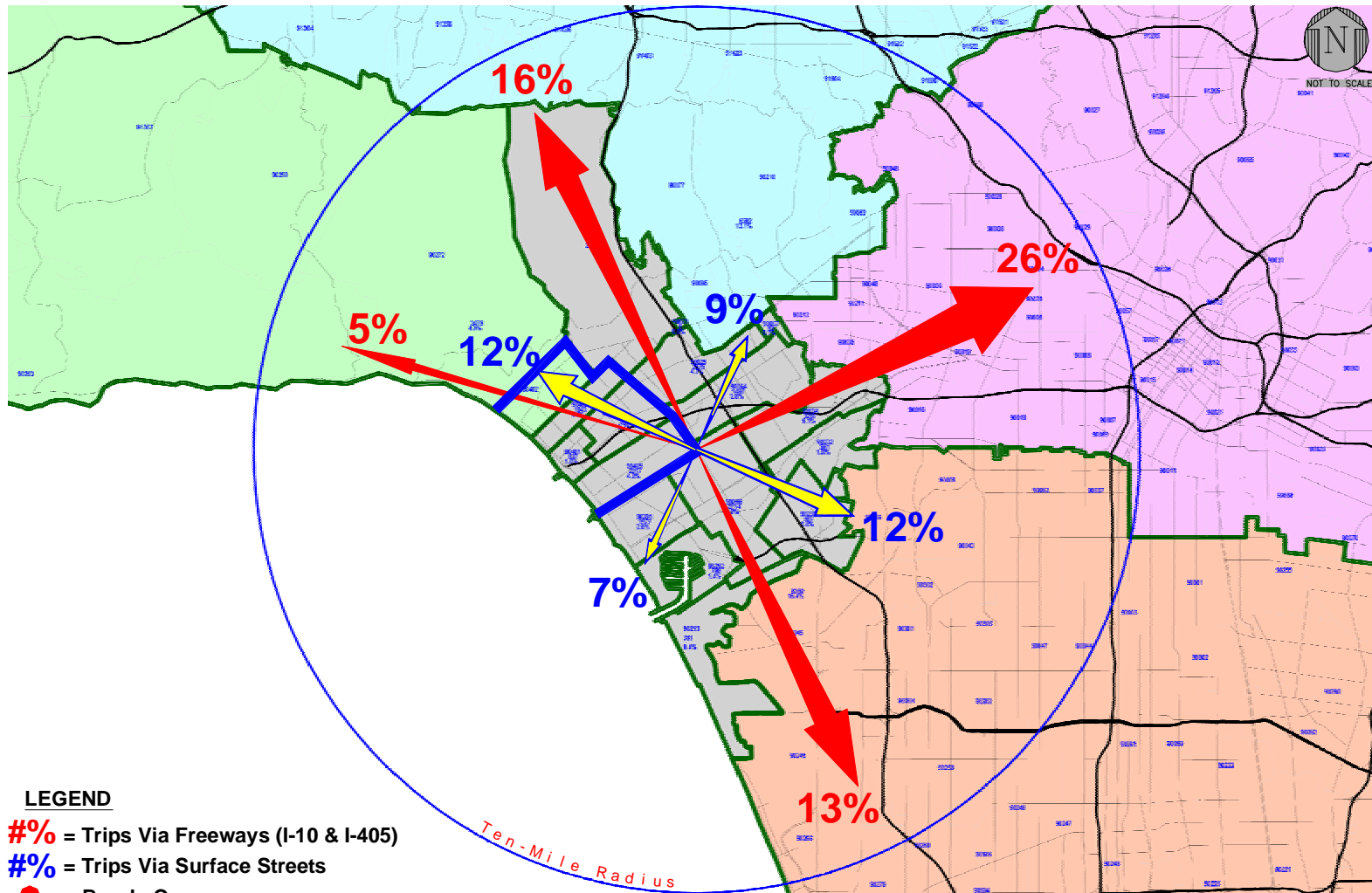
KAKU ASSOCIATES

DISTRIBUTION OF ENROLLED STUDENTS (2002 - 2003)

Traffic Issues

SANTA MONICA COLLEGE BUNDY CAMPUS Long Range Master Plan

WWC  
OT  
ARCHITECTURE  
PLANNING  
FORENSICS  
INTERIORS



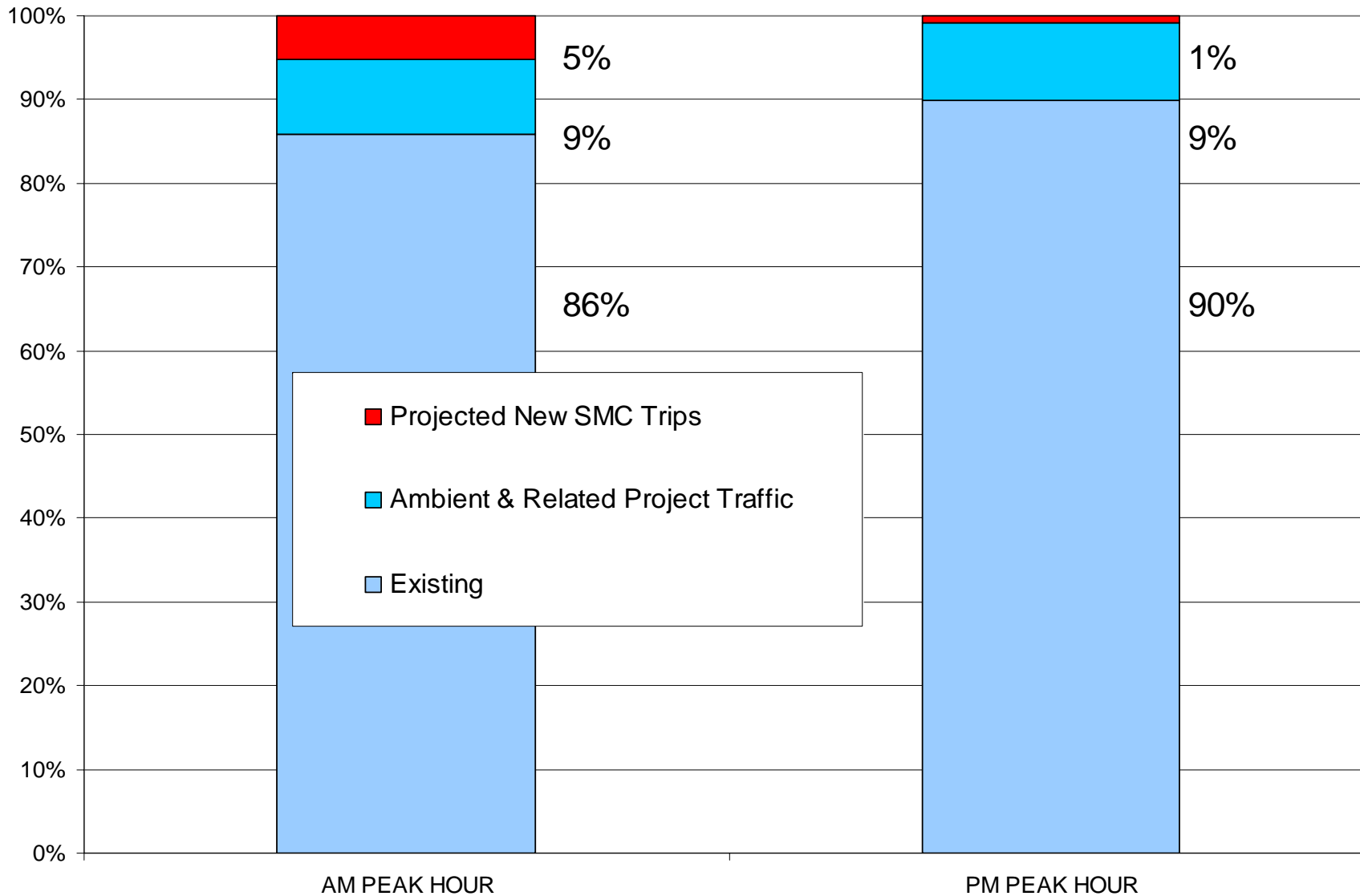
**KAKU ASSOCIATES**

**ESTIMATED TRIP DISTRIBUTION**

**Traffic Issues**

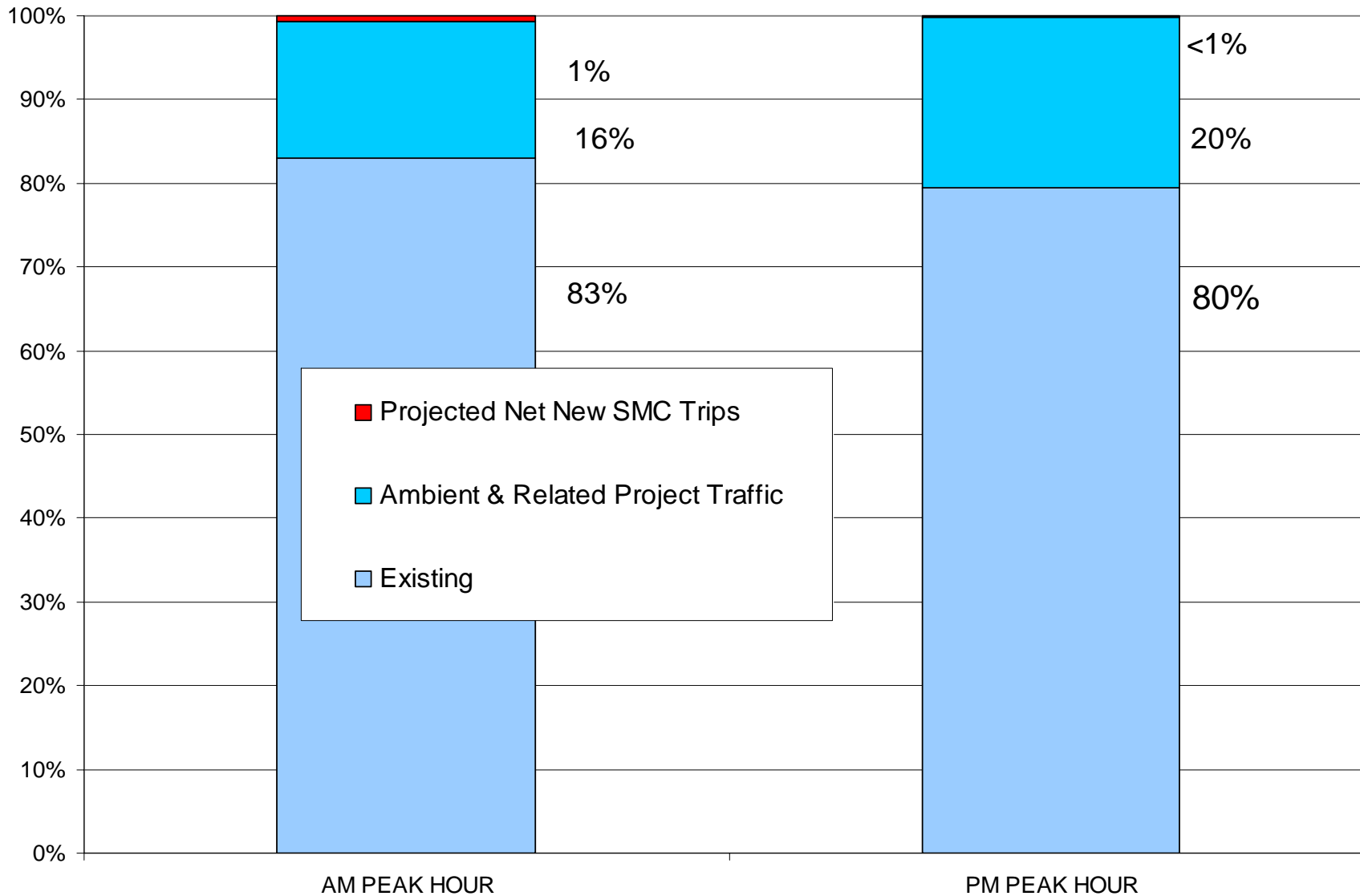
**SANTA MONICA COLLEGE BUNDY CAMPUS Long Range Master Plan**

## SUM OF PROJECTED TRAFFIC VOLUMES ON BUNDY DRIVE ADJACENT TO NEW CAMPUS (FALL 2010)



Traffic Issues

## SUM OF PROJECTED TRAFFIC VOLUMES AT 23RD STREET & AIRPORT AVENUE (FALL 2010)



Traffic Issues

## Parking

Sufficient parking provided for proposed on-site uses

## Circulation

### Access Alternative 1 (full access, two driveways)

- Offers most flexibility for drivers accessing the site
- Least impact on adjacent neighborhoods

### Access Alternative 2 (Bundy Drive access only)

- Most constrained access scenario
- Increased queuing and delay on-site and off-site
- Likely to result in additional traffic in residential neighborhoods to the northwest (Sunset Park) and to the south (Mar Vista)

### Access Alternative 3 (two one-way driveways, clockwise circulation pattern)

- Restricted site access
- Increased congestion inbound off Bundy Drive

Traffic Issues





## Issues

1. Educational Needs
2. Access/Circulation
3. Parking
4. Amenities

## Proposed resolutions

1. Current building space is sufficient
2. Alternative 1 with possible turn restrictions has least impact. Monitoring program recommended
3. Parking is more than sufficient for on-site uses
4. Pedestrian friendly; community focused classes

Findings

## Recommendations

1. The Board of Trustees authorize staff to proceed with the Bundy Campus Master Plan process as presented today
2. The Board of Trustees authorize staff to negotiate with the necessary parties an ongoing monitoring program

## Summary of Recommendations