

**Santa Monica College
Board of Trustees**

**Bundy Campus Master Plan
& Final EIR Certification
February 12, 2007**

Bundy Campus Master Plan

- Long-range plan to create unique campus
- Educationally supportive environment
- Respectful of neighboring communities
- Sustainable design and operation
- Improve operational self-sufficiency

Bundy Campus Master Plan

Plan would provide facilities for:

- New career and professional programs
- Basic skills and math programs
- General education offerings for students in technical programs
- Special high school programs & schedules

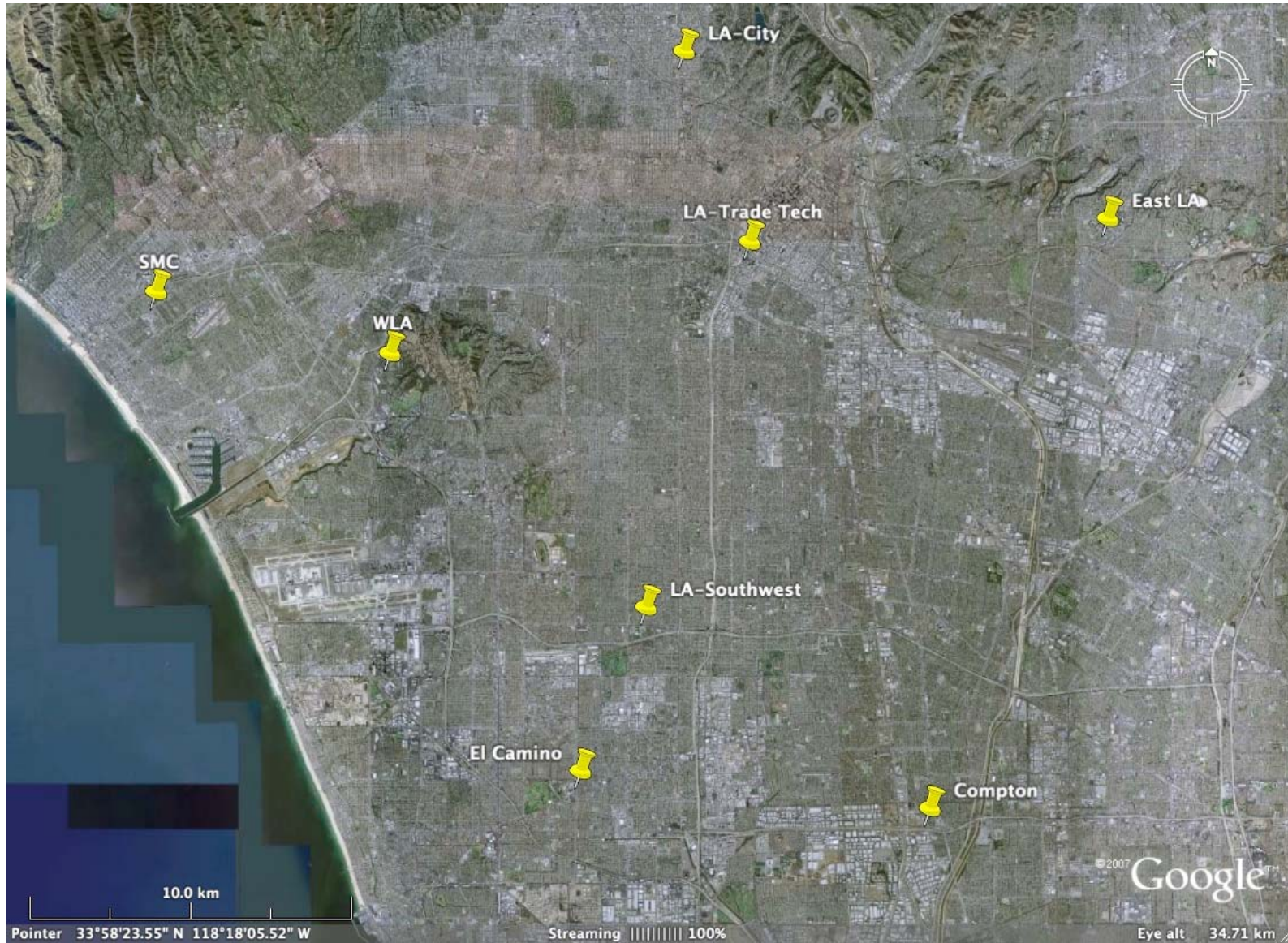
Bundy Campus Master Plan

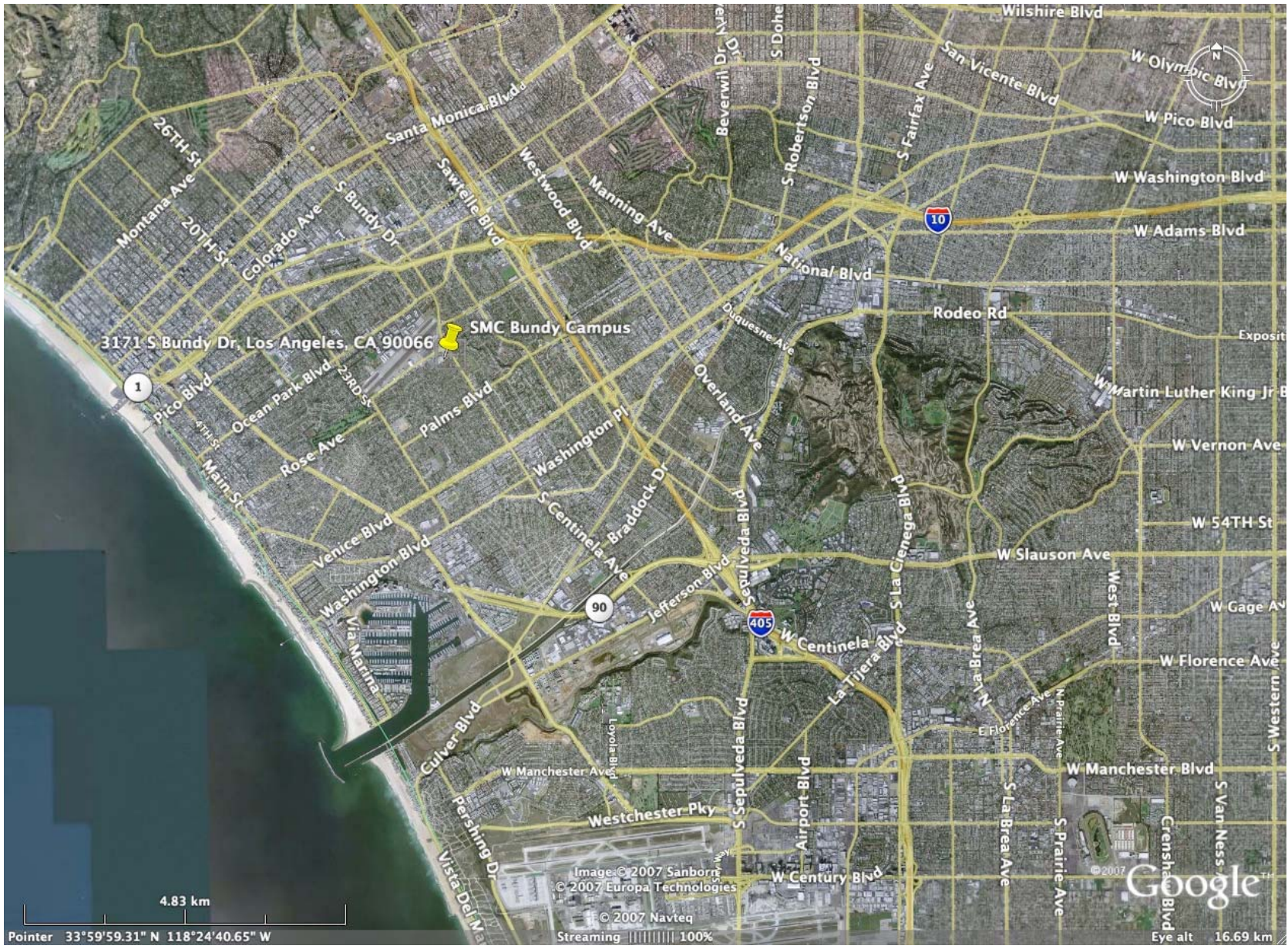
- Resolves capacity and circulation issues
- Reflects agreements reached in past 2 years
- Focus is site self-sufficiency

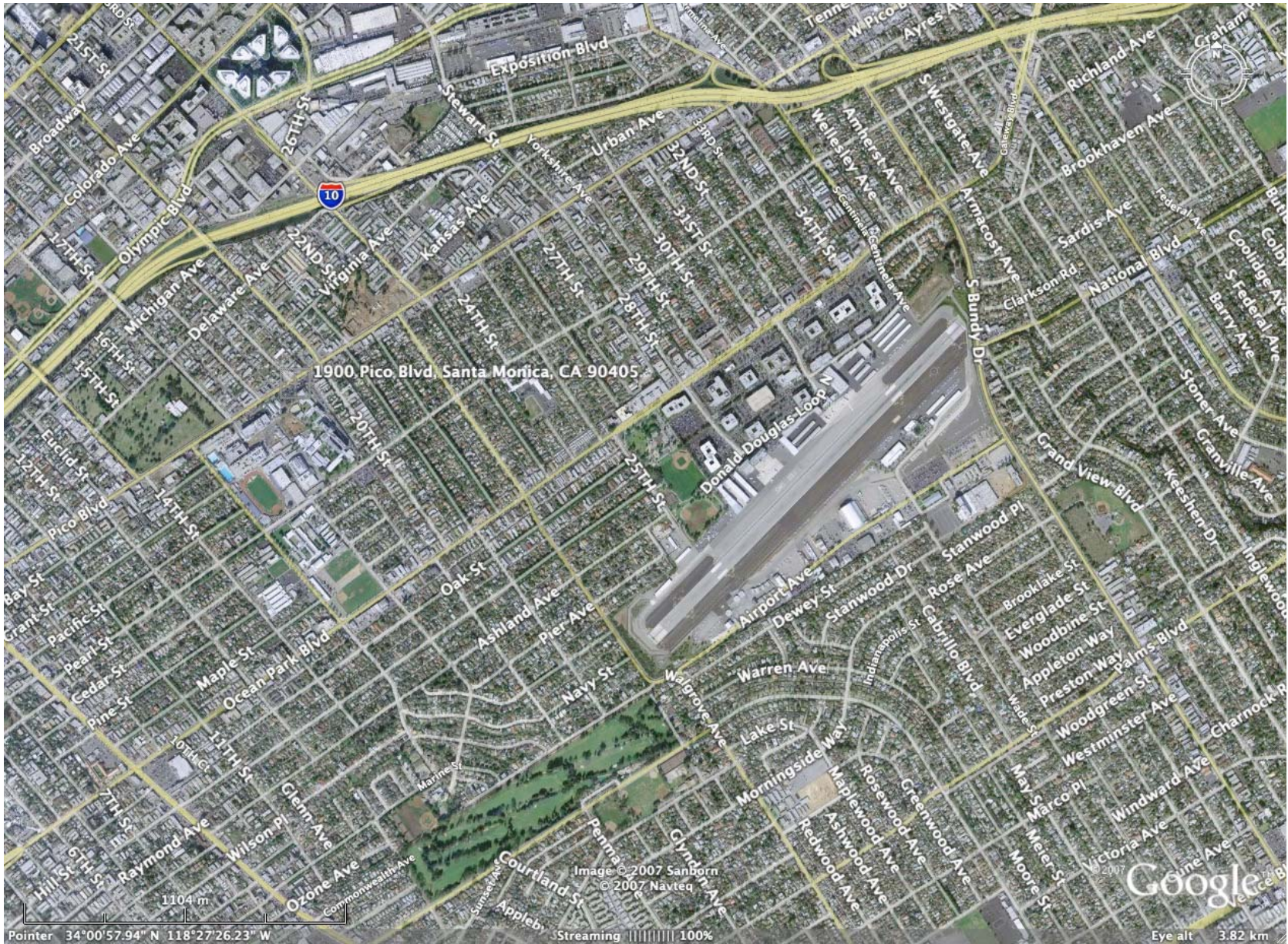
Bundy Campus Master Plan

- Educational planning developed by College steering committee in Spring 2005
- Activities included community input through visioning sessions and meetings
- Reviewed by Board of Trustees in July 2005
- Includes LA Department of Transportation request for new northeast driveway

Community Colleges in Metropolitan Los Angeles







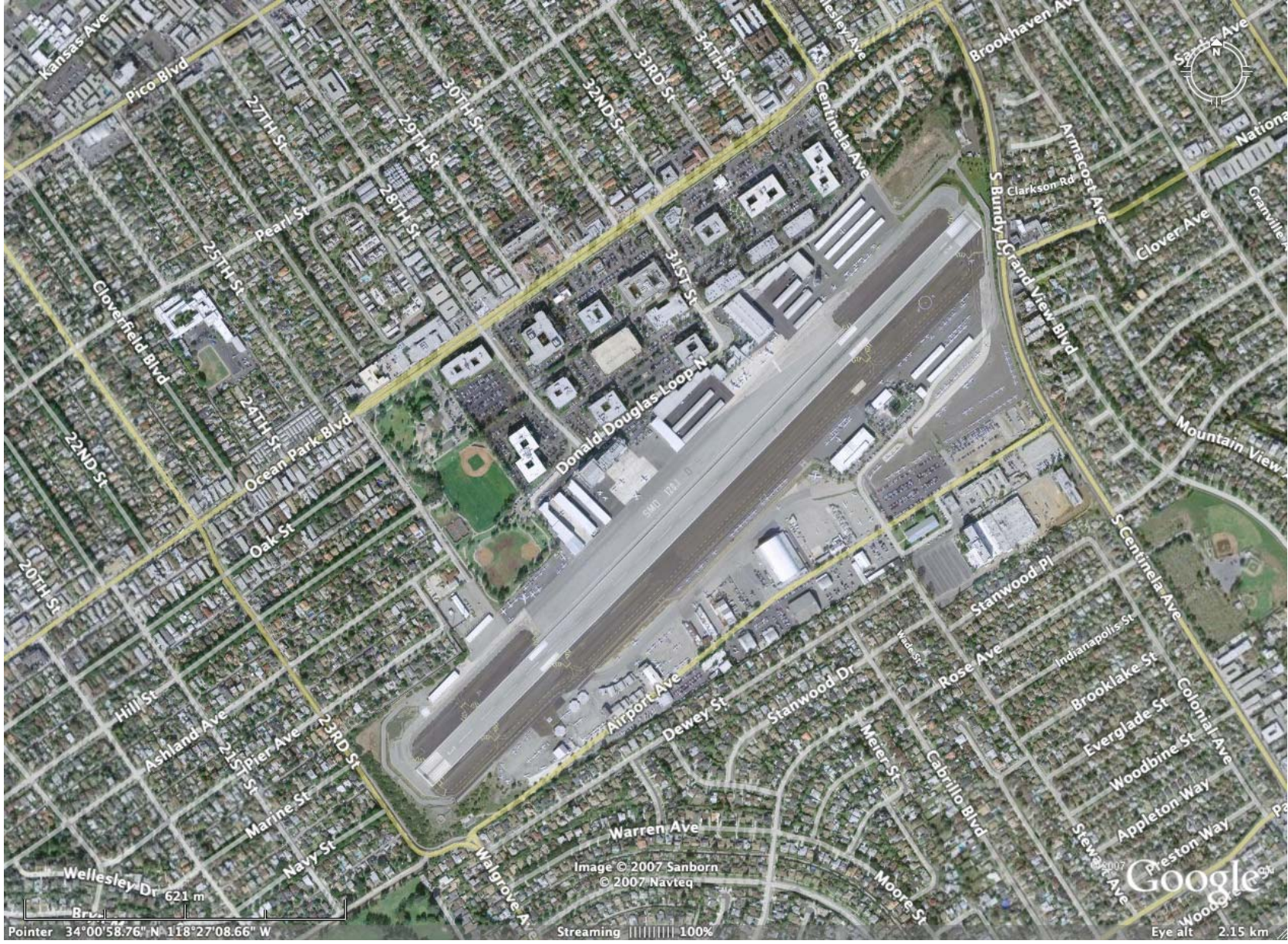
1900 Pico Blvd, Santa Monica, CA 90405

Pointer 34°00'57.94" N 118°27'26.23" W

Image © 2007 Sanborn
© 2007 Navteq

Streaming 100%

Eye alt 3.82 km



Existing Campus

- Renovated West Building, 16 classrooms
- Vacant East Building
- 609 surface parking spaces
- Landscaped soundwall and bio-swale system
- Day & evening programs in health sciences, education, continuing education, workforce development, and general education

Existing Circulation

- Enter on Bundy Drive from north and south
- Exit on Bundy Drive, south only
- Exit to Airport Avenue at Donald Douglas Loop South, east only
- Stewart Avenue gate closed
- Intercampus shuttle to main campus

Educational Planning

- Community colleges key to upward mobility and economic health in California
- Higher levels of education now required to find a job (math skills for trades higher than standards for high school exit exam, for example)
- More than half of incoming freshmen need basic skills and math programs
- Technical programs include more academic content
- Some career programs value bachelor's degree

Educational Planning

- Planning is underway to improve support programs in basic skills and math
- Increased course offerings in liberal arts (general education) will benefit students in career programs
- Currently, students can meet four of the five IGETC area requirements at the Bundy Campus, however course selection is limited in three of the areas
- Some career programs may relocate to campus
- New career programs can be located at campus

Bundy Campus Master Plan

- Plan calls for demolition of 2-story East Building
- A new 2-story replacement building (38,205 sf) located closer to West Building (LEED certified)
- 780 parking spaces, including 230 underground
- New northeast driveway to Bundy Drive
- Continued use & improvements to West Building
- Pedestrian parkway on Bundy Drive; site landscaping; and miscellaneous improvements

Bundy Campus Master Plan

- Enter on new northeast driveway from Bundy, with new half-signal for Bundy northbound arrivals
- Exit on Bundy Drive, south only
- Exit to Airport Avenue at Donald Douglas Loop South
- Turning & traffic restrictions to be determined in conjunction with Cities of Santa Monica & LA
- Stewart Avenue gate closed
- Intercampus shuttle to main campus



FINAL PLAN



FINAL SECTION

FINAL PHASE MASTER PLAN - BUNDY CAMPUS



CEQA Process

- ✓ Notice of Preparation of EIR (Sept 2005)
- ✓ Scoping Meeting for public comment (Oct 2005)
- ✓ Notice of Availability of Draft EIR (Sept 2006)
- ✓ Public Meeting for comments on Draft EIR (Nov 2006)
- ✓ Notice of Availability of Final EIR (Jan 2007)
- ✓ Board Hearing to Certify Final EIR (Feb 2007)

Summary of Final EIR

- The Bundy Campus Master Plan will have less than significant impacts or will have impacts less than significant after mitigation in all areas other than traffic and construction-related noise. The Final EIR provides the detailed set of mitigations.

Summary of Final EIR

- The Final EIR identifies five mitigation measures to reduce construction- and demolition-related noise. However, there will likely continue to be temporary or periodic increases in noise; as a consequence, construction- and demolition noise will remain a significant and unavoidable impact.

Summary of Final EIR - Traffic

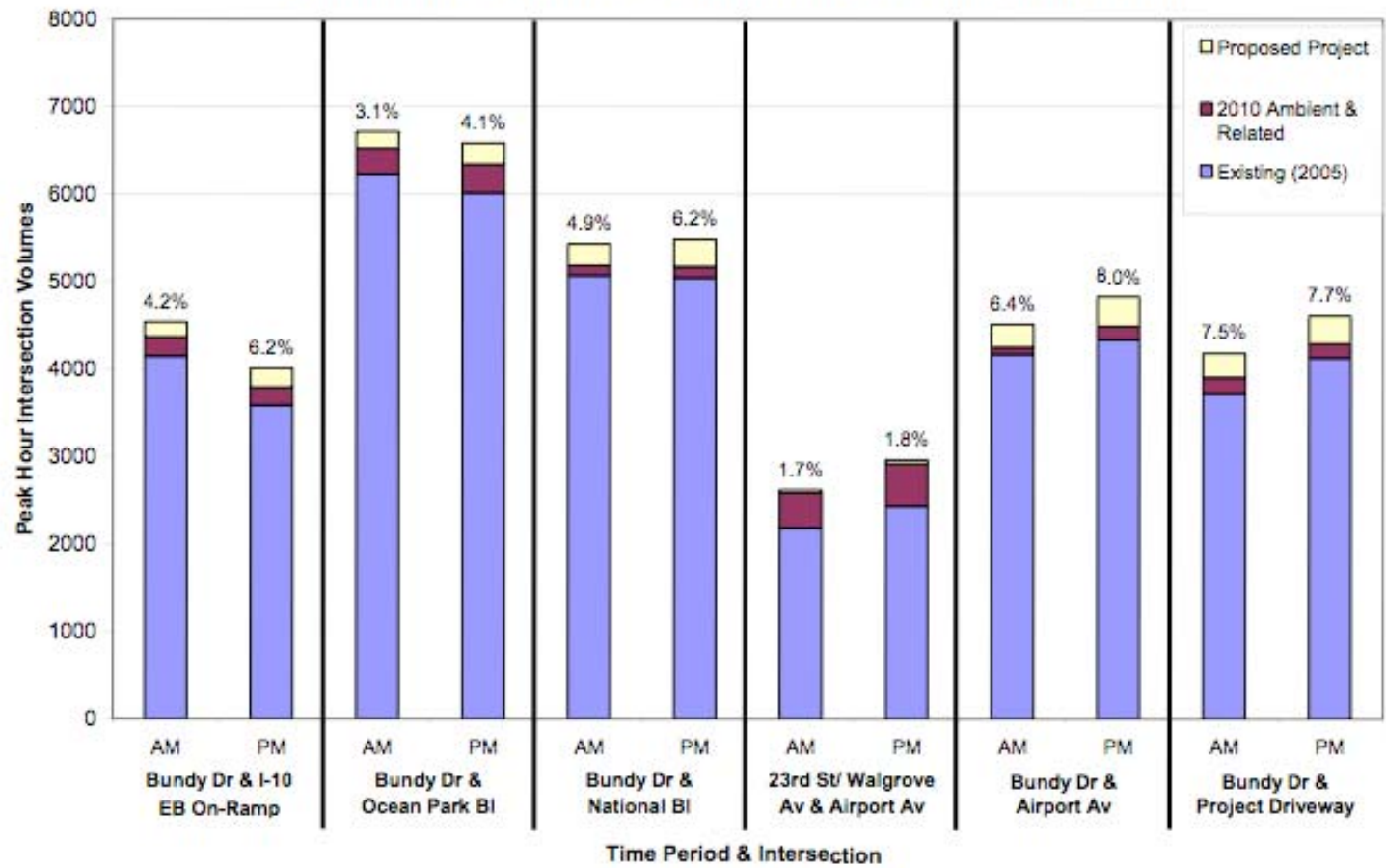
The Final EIR

- Analyzes 27 intersections and 22 street segments
- Analyzes 14 circulation alternatives to enter and exit the campus and 2 alternatives that relocate Airport Avenue
- Uses City of Santa Monica or City of Los Angeles methodologies and thresholds as appropriate
- In Santa Monica, the threshold of significance is the addition of more than one car trip per day

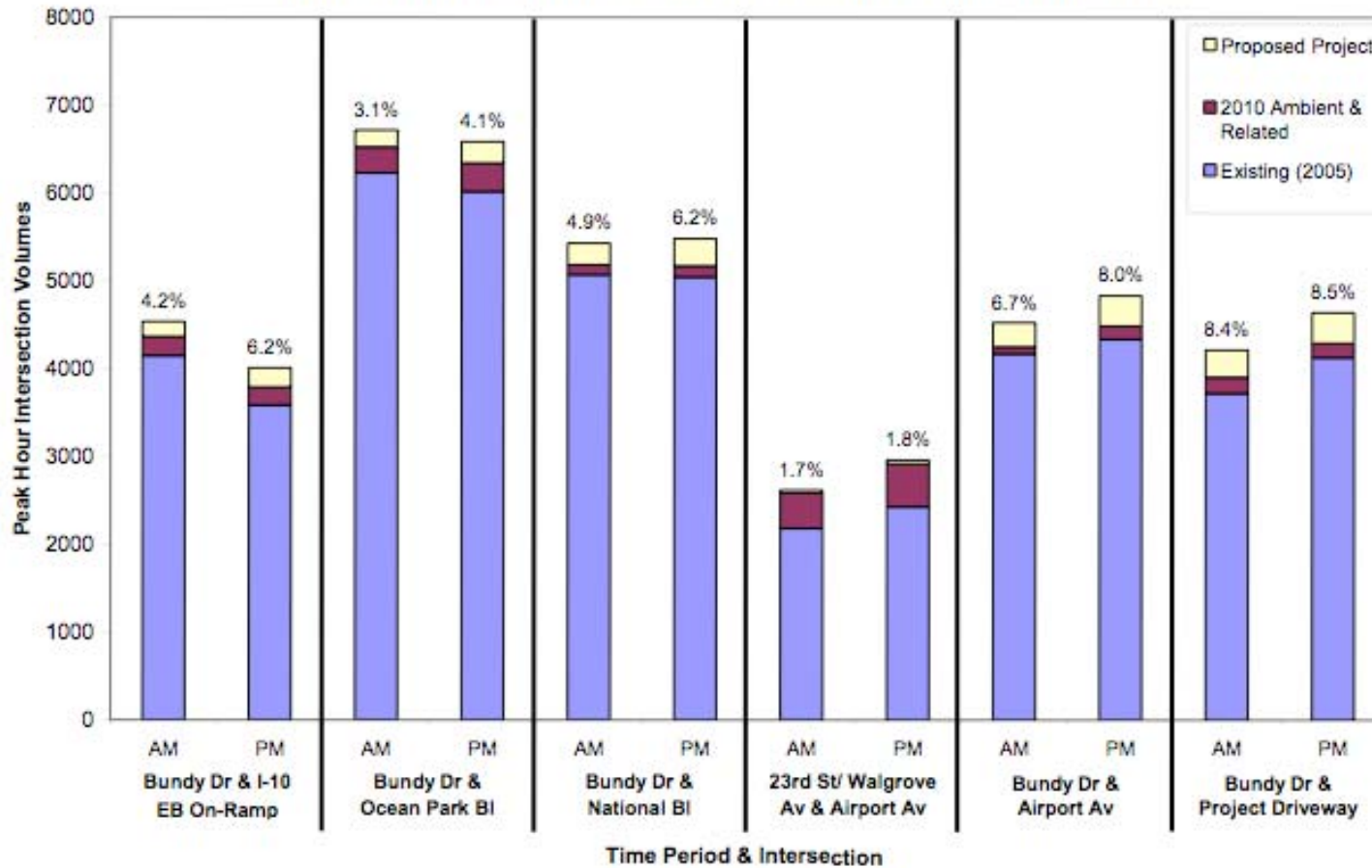
Summary of Final EIR - Traffic

- After mitigation, significant and unavoidable impacts at four intersections on Bundy Drive remain under all access alternatives (Bundy & Airport; Bundy & National; Bundy & Ocean Park; Bundy & I-10)
- After publication of Final EIR, LA Department of Transportation identified possible mitigations for Bundy & Ocean Park Boulevard. Two of these are recommended.
- The City of Santa Monica has recently implemented the change identified as a mitigation at Bundy & Airport
- After mitigation, there are no significant impacts at any City of Santa Monica intersection

**FIGURE 5
TRAFFIC VOLUMES AT IMPACTED INTERSECTIONS - ALTERNATIVE A6**



**FIGURE 6
TRAFFIC VOLUMES AT IMPACTED INTERSECTIONS - ALTERNATIVE B4**

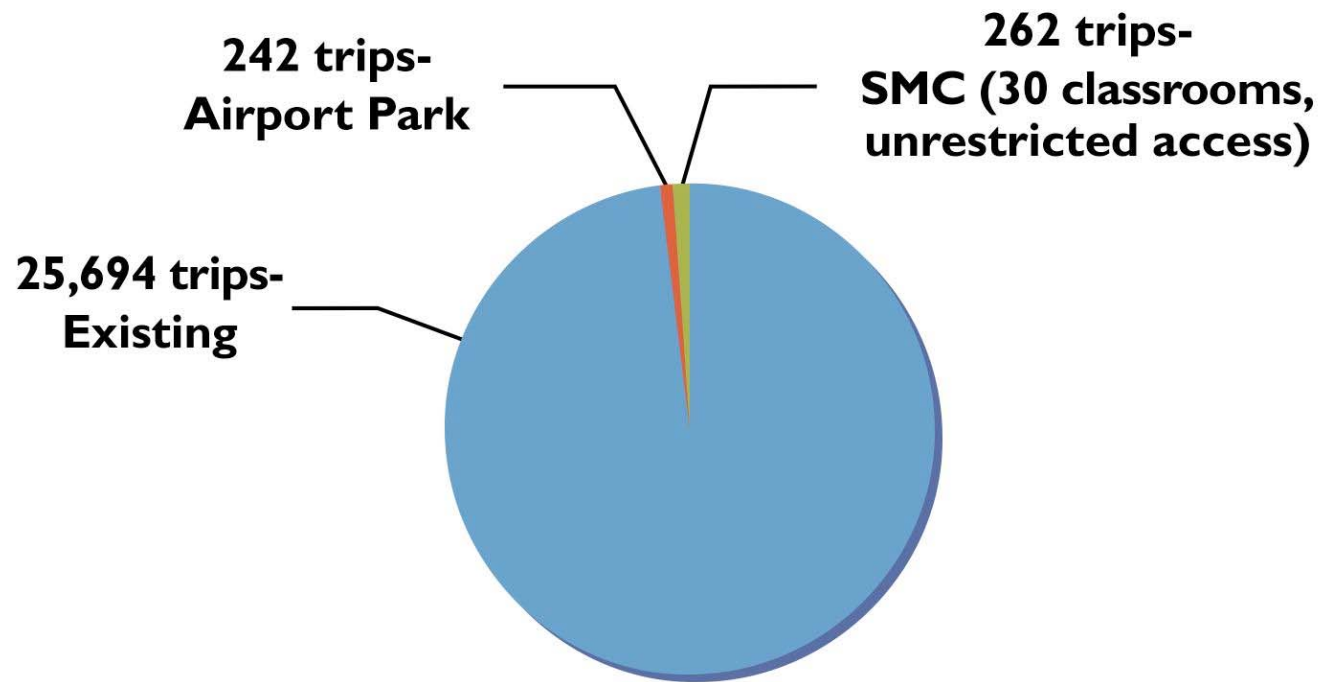


Summary of Final EIR - Traffic

Under all access alternatives,

- There are no significant traffic impacts on any of the Los Angeles street segments
- There will remain significant and unavoidable traffic impacts on two of the 10 study street segments in Santa Monica
- The Bundy Campus Master Plan will add a maximum of 18 vehicle trips per day to Dewey Street between 21st Street and 23rd Street
- The Bundy Campus Master Plan will add a maximum of 165 vehicle trips per day to 23rd Street north of Airport Avenue

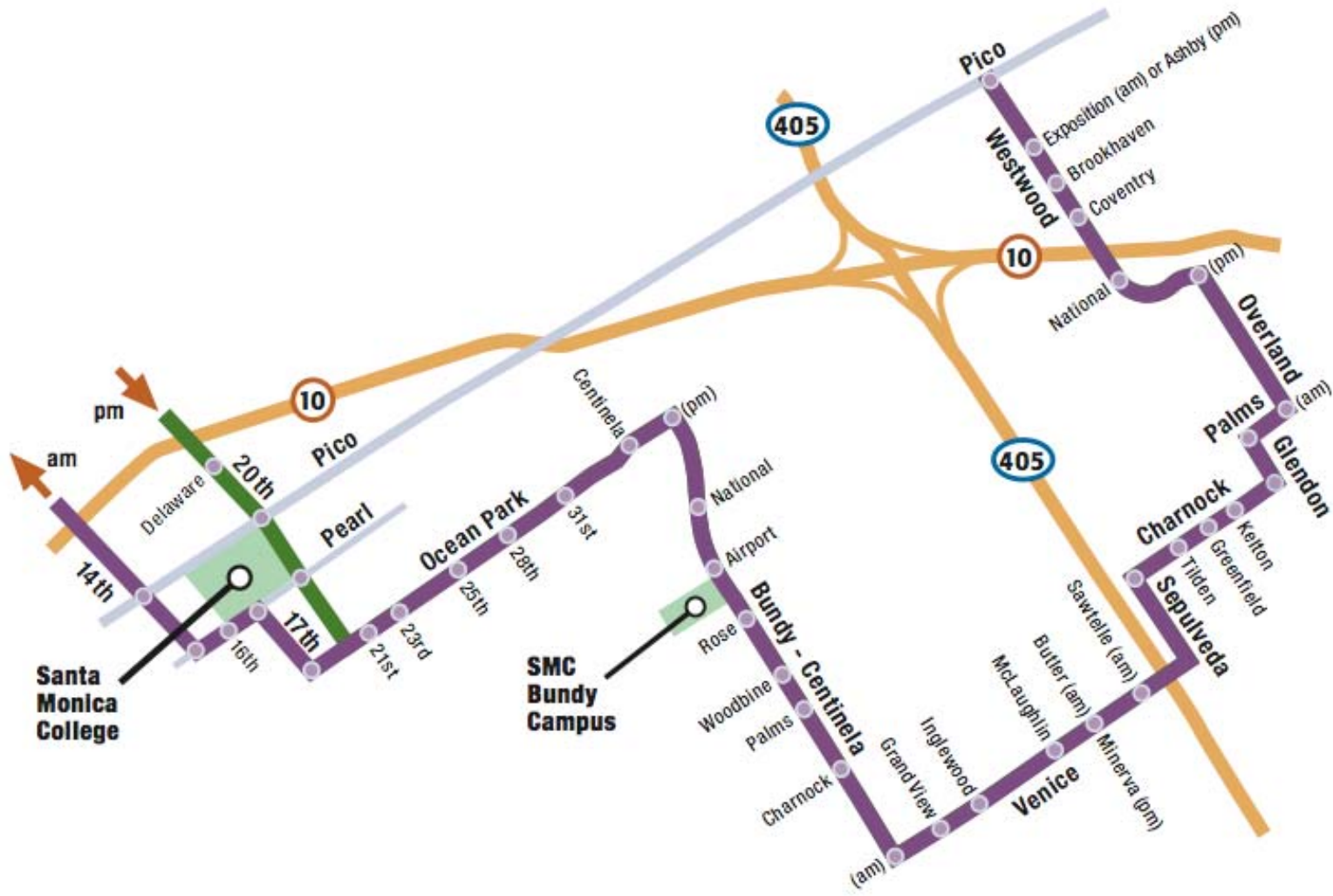
Daily Vehicle Trips on 23rd Street North of Airport Avenue



Alternative Projects

- No Project Alternative (1) – Master Plan not adopted or implemented. None of the goals of the Master Plan achieved.
- No Project Alternative (2) – Site sold to commercial developer for 494,100 sf of commercial office space and 2,000 parking spaces. New significant and unavoidable impacts in a number of areas.
- No Project Alternative (3) – Site sold to for housing for 625 multi-family residential units and 1,250 parking spaces. New significant and unavoidable impacts in a number of areas.
- Renovated East Building Alternative – Provides 7 fewer classrooms. Impacts in some areas reduced; does not meet goals of Bundy Campus Master Plan that include achieving site self-sufficiency and providing the best possible environment in support of student success.

New Related Project – New Big Blue Bus Line



Overriding Considerations

- This statement is a determination by the Board of Trustees that the educational, social, cultural, economic, or other benefits of the project outweigh the unavoidable adverse environmental impacts
- The Bundy Campus Master Plan warrants this statement for the following reasons:
- The goals of the Plan are to fulfill SMC's adopted vision, mission, and goals; to guide future development of the campus; to create a largely self-contained campus; to provide a renewed presence and image to the neighboring community

Overriding Considerations

- Objectives to meet these goals include promoting student success and providing a supportive environment; to develop a plan based on the use of sustainable resources and energy efficiency; to incorporate technology; to create a unified development plan to maximize educational and open space; to accommodate all parking onsite; to operate as a self-contained satellite campus.
- The Bundy Campus Master Plan is necessary to achieve the educational objectives that provide for new career and professional programs, augmenting basic skills in English and math, augmenting general education opportunities, and providing special high school programs & schedules.

Overriding Considerations

- The Bundy Campus Master Plan serves the larger mission of California's community colleges and SMC to advance California's economic development and global competitiveness through education and training that contributes to workforce development.
- By facilitating professional and vocational training in the fields of nursing and health sciences, early childhood education, teaching, and potentially other areas (cinema, TV broadcasting, journalism, and fashion merchandising), the Bundy Campus contributes to a well-trained workforce.

Overriding Considerations

- In contrast, the two adverse environmental effects are comparatively minor in nature.
- The finding of significant adverse noise impacts during construction are short-term impacts that will cease upon completion of construction.
- The finding of significant adverse traffic impacts at 4 of 27 intersections and 2 of 22 street segments stems in part from the use of highly sensitive thresholds. The additional traffic constitutes a very small percentage of overall traffic. Moreover, the Plan incorporates all feasible traffic mitigation measures and two additional measures added by LADOT.

Recommendations

- Adopt the resolution certifying the Final EIR on the Bundy Campus Master Plan
- Adopt the resolution encompassing four related actions: makes the necessary CEQA findings as to what the Final EIR determined; adopts a statement of overriding considerations that contrasts the many educational, social, cultural, and economic benefits of the Bundy Campus Master Plan to the comparatively minor environmental impacts from the project that cannot be mitigated; adopts a mitigation monitoring program; and approves the Bundy Campus Master Plan.