

ACCESSING SMC APPS THROUGH CITRIX ON WINDOWS

DOWNLOADING AND INSTALLING:

You need to follow these installation steps only **once** on each computer you intend to use to connect.

1. Open a browser and go to: receiver.citrix.com

2. Download the latest version of "Citrix Workspace App" by clicking on the Download button.

3. Run the "CitrixReceiver.exe" installation file after download...

4. Agree to the security warning if prompted ...

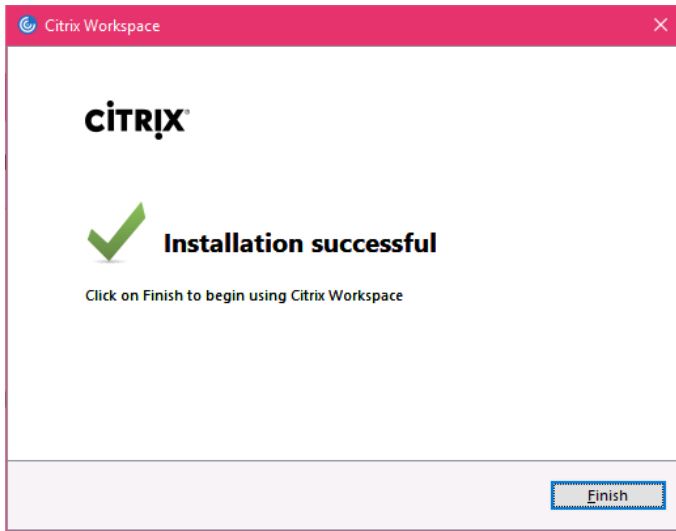
5. Click "Start"

6. Check accept the license agreement

7. Install

CONFIGURING CITRIX RECEIVER FOR SMC

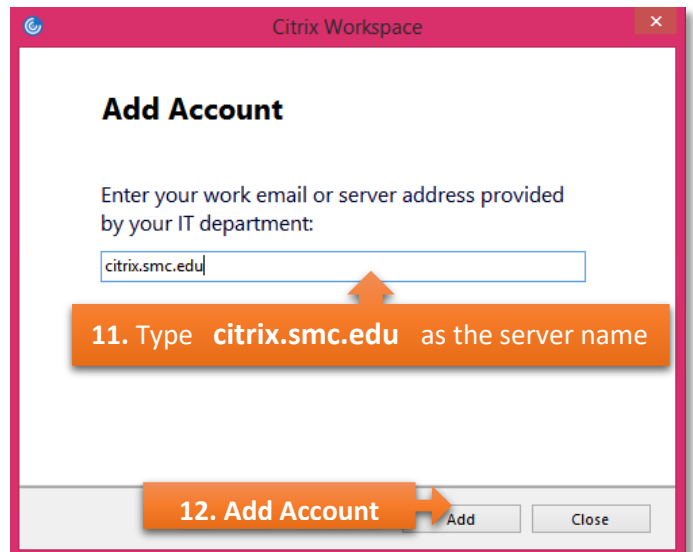
The following steps will configure Citrix Receiver to connect to SMC servers, independent of any browser.



9. Double click the Workspace icon on the taskbar.

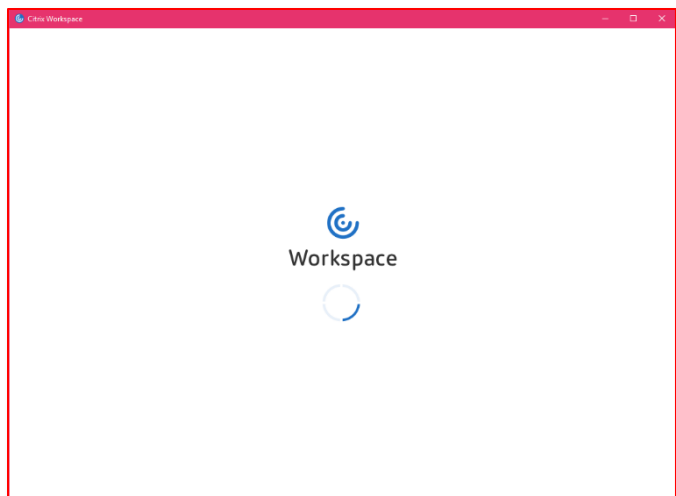


10. Got It

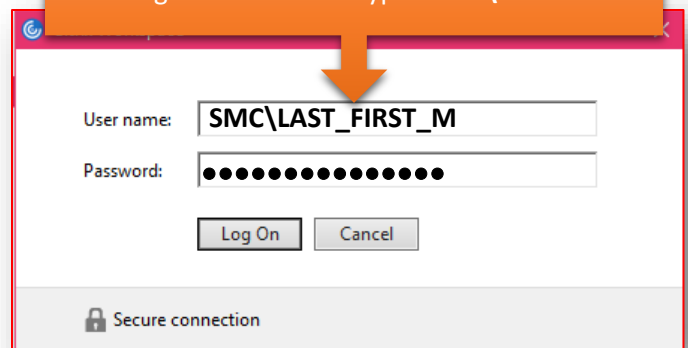


11. Type **citrix.smc.edu** as the server name

12. Add Account



13. Type your SMC username and password, then Log On. Be sure to type "SMC\" as shown

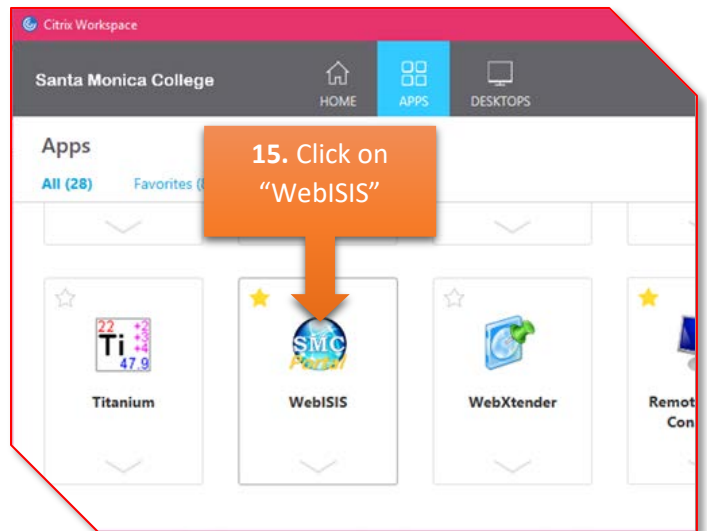


OPENING AN APPLICATION (WE'LL USE WEBISIS AS AN EXAMPLE)

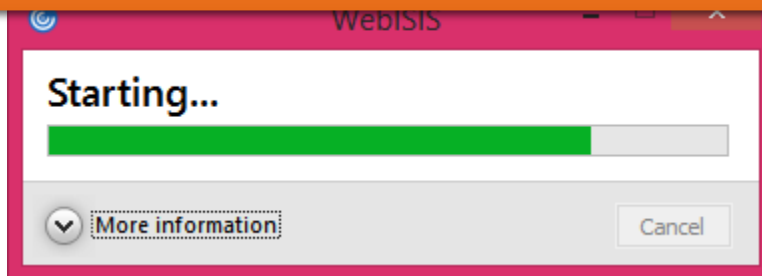
14. Double click the Workspace icon on the taskbar



15. Click on "WebISIS"

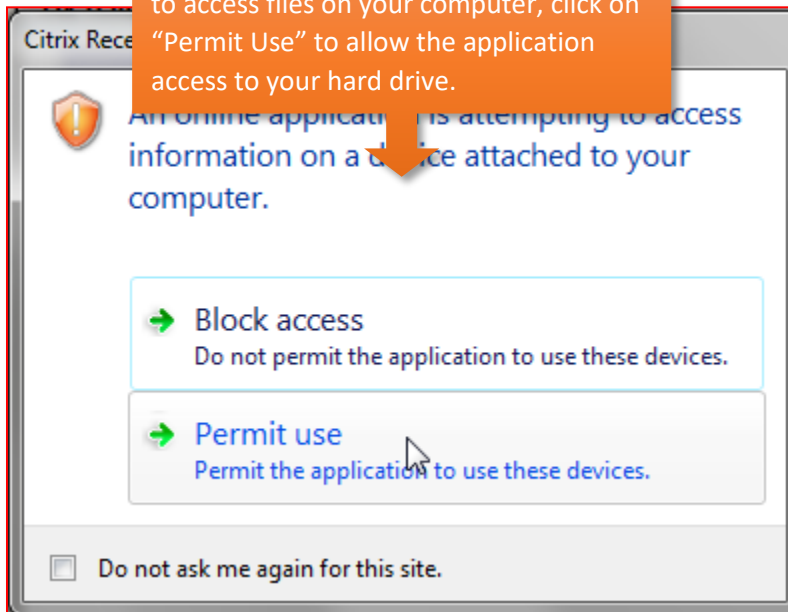


16. If you are prompted to log in, go back to Step 12. Otherwise, wait a couple minutes for the application to open...



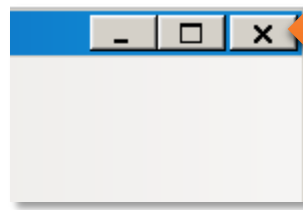
[Grab your reader's attention with a great quote from the document or use this space to emphasize a key point. To place this text box anywhere on the page, just drag it.]

to access files on your computer, click on "Permit Use" to allow the application access to your hard drive.

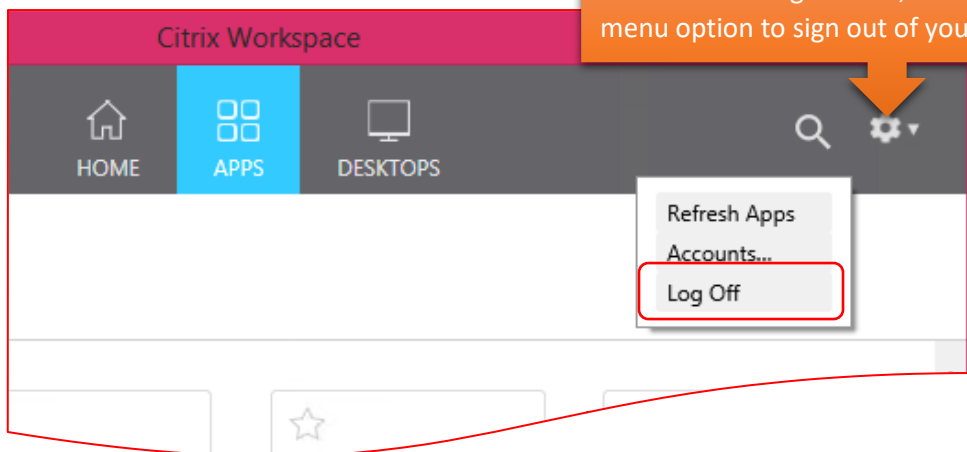


LOGGIN OFF

It is advisable to log off to prevent losing data or corrupting access to MATLAB through Citrix.



18. Close all Citrix applications by clicking on the "X" button



19. Click on the gear icon, Click the "Log off" menu option to sign out of your Citrix session.