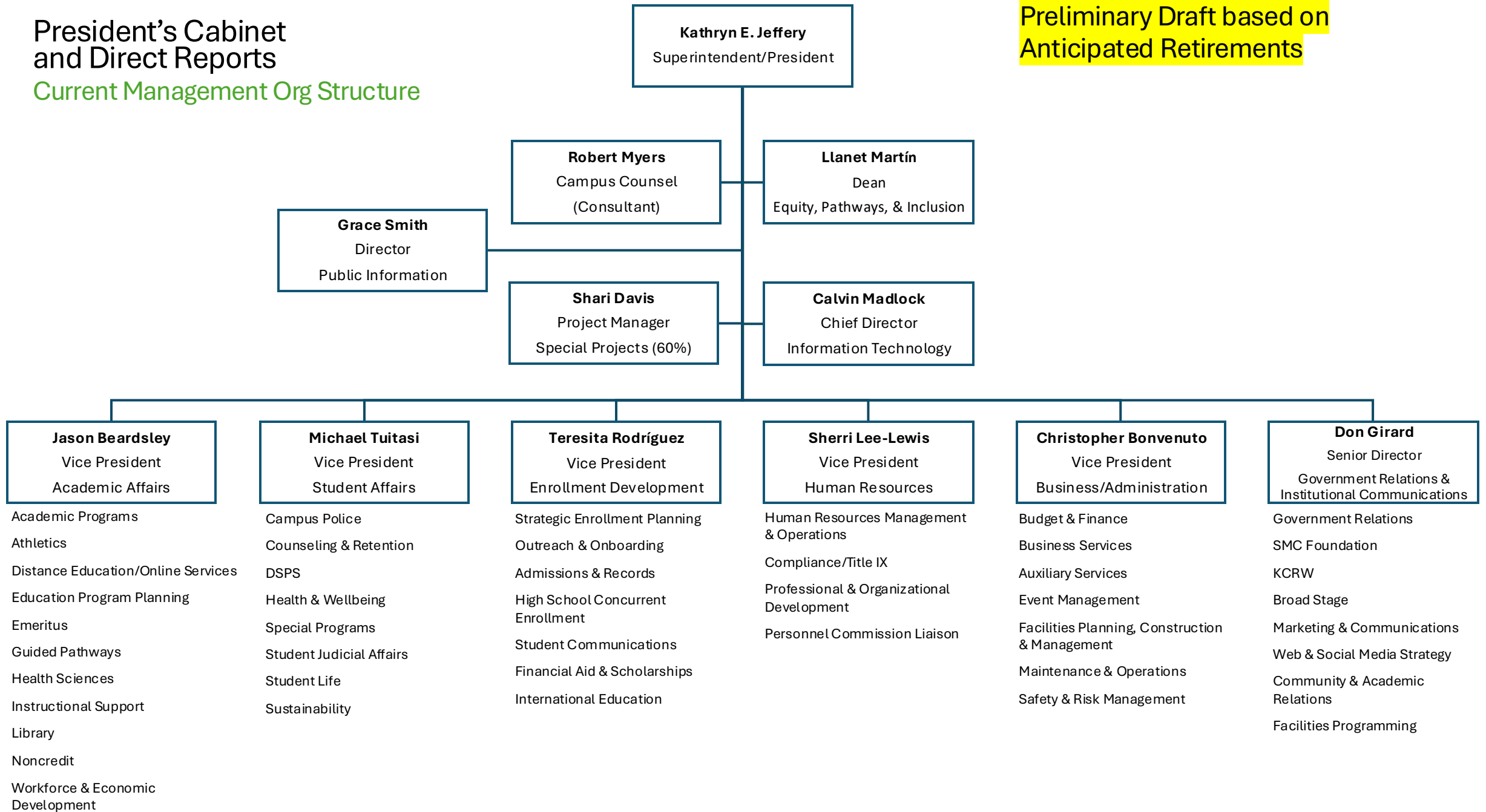


# President's Cabinet and Direct Reports

## Current Management Org Structure

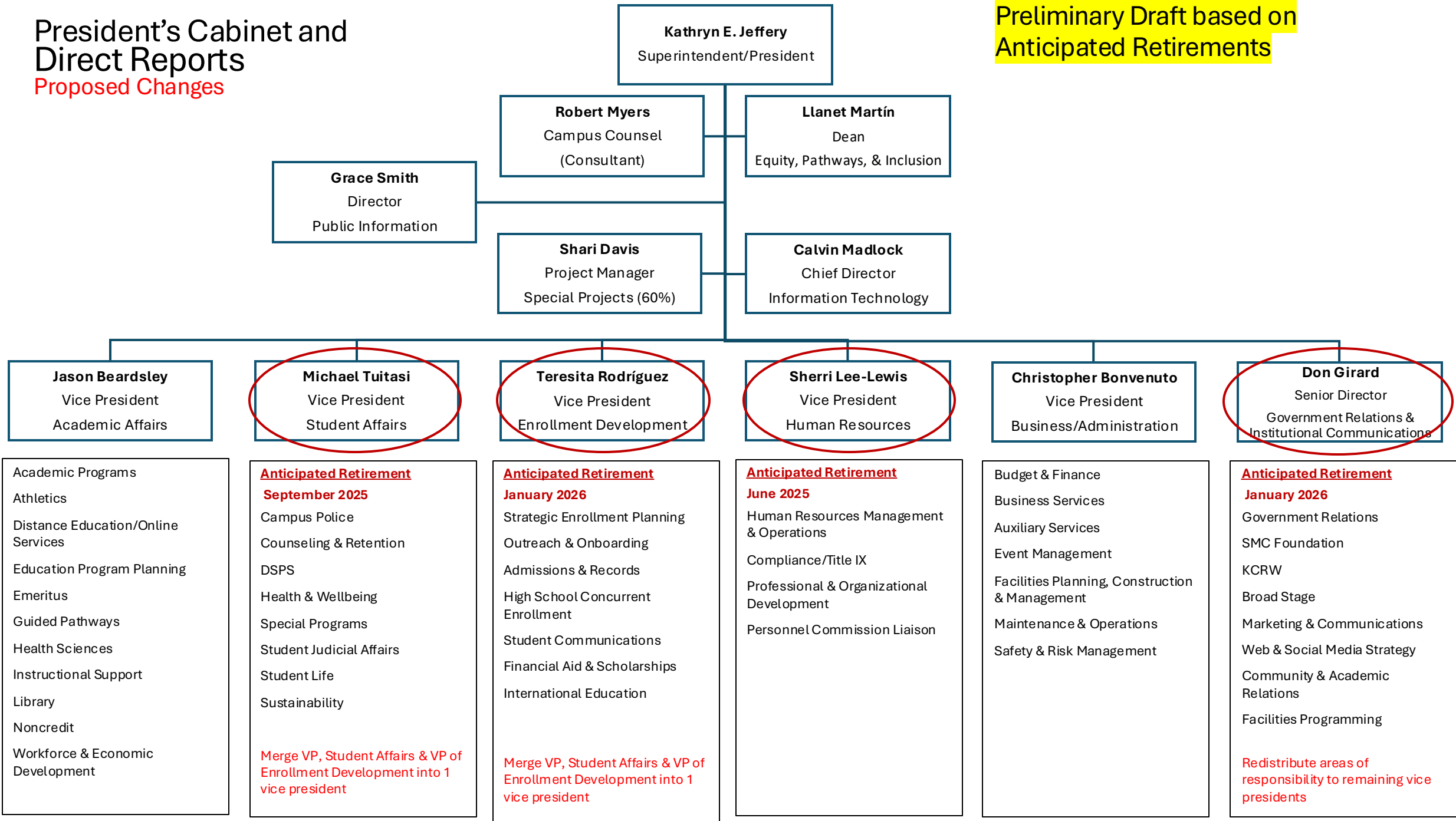
Preliminary Draft based on  
Anticipated Retirements



# President's Cabinet and Direct Reports

Proposed Changes

Preliminary Draft based on Anticipated Retirements



**Jason Beardsley**  
Vice President  
Academic Affairs

**Michael Tuitasi**  
Vice President  
Student Affairs

**Teresita Rodríguez**  
Vice President  
Enrollment Development

**Sherri Lee-Lewis**  
Vice President  
Human Resources

**Christopher Bonvenuto**  
Vice President  
Business/Administration

**Don Girard**  
Senior Director  
Government Relations & Institutional Communications

- Academic Programs
- Athletics
- Distance Education/Online Services
- Education Program Planning
- Emeritus
- Guided Pathways
- Health Sciences
- Instructional Support
- Library
- Noncredit
- Workforce & Economic Development

- Anticipated Retirement**  
**September 2025**
- Campus Police
  - Counseling & Retention
  - DSPS
  - Health & Wellbeing
  - Special Programs
  - Student Judicial Affairs
  - Student Life
  - Sustainability
- Merge VP, Student Affairs & VP of Enrollment Development into 1 vice president

- Anticipated Retirement**  
**January 2026**
- Strategic Enrollment Planning
  - Outreach & Onboarding
  - Admissions & Records
  - High School Concurrent Enrollment
  - Student Communications
  - Financial Aid & Scholarships
  - International Education
- Merge VP, Student Affairs & VP of Enrollment Development into 1 vice president

- Anticipated Retirement**  
**June 2025**
- Human Resources Management & Operations
  - Compliance/Title IX
  - Professional & Organizational Development
  - Personnel Commission Liaison

- Budget & Finance
- Business Services
- Auxiliary Services
- Event Management
- Facilities Planning, Construction & Management
- Maintenance & Operations
- Safety & Risk Management

- Anticipated Retirement**  
**January 2026**
- Government Relations
  - SMC Foundation
  - KCRW
  - Broad Stage
  - Marketing & Communications
  - Web & Social Media Strategy
  - Community & Academic Relations
  - Facilities Programming
- Redistribute areas of responsibility to remaining vice presidents