

Distance Learning Success Metrics on the Institutional Effectiveness Dashboard

HANNAH LAWLER, DEAN OF INSTITUTIONAL RESEARCH

WE MEET AGAIN...

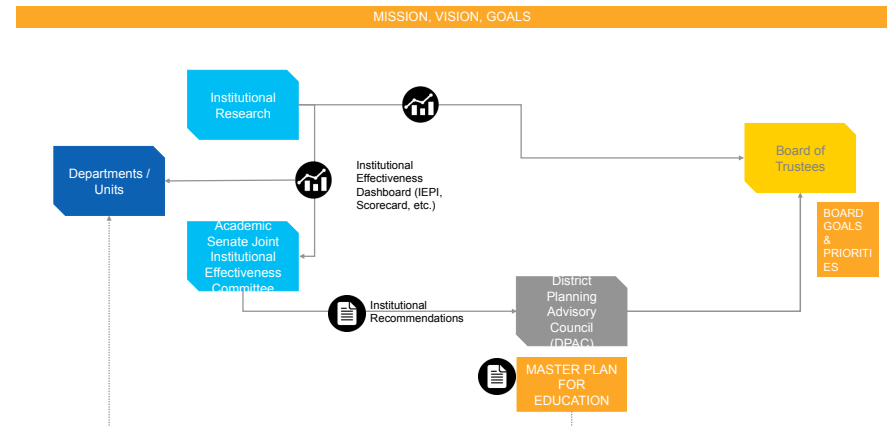
(let's review to help us contextualize the data discussion)

- Purpose of institutional effectiveness
- How institutional effectiveness data inform college planning
- What are institution-set standards?

WHAT IS INSTITUTIONAL EFFECTIVENESS?

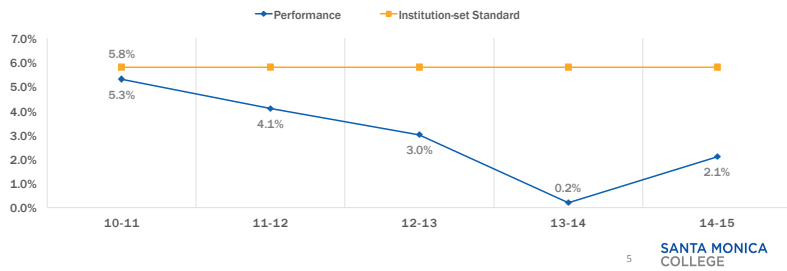
- 35,000 feet view of college's effectiveness
- Dashboard is a visual tool used to help college monitor performance on metrics identified as being central to college's mission/goals
- Data identify areas that need our attention, informs planning
- Relies on dialogue and engagement with data
- Ongoing, dynamic, responsive

Are we
accomplishing
our college
mission, goals?

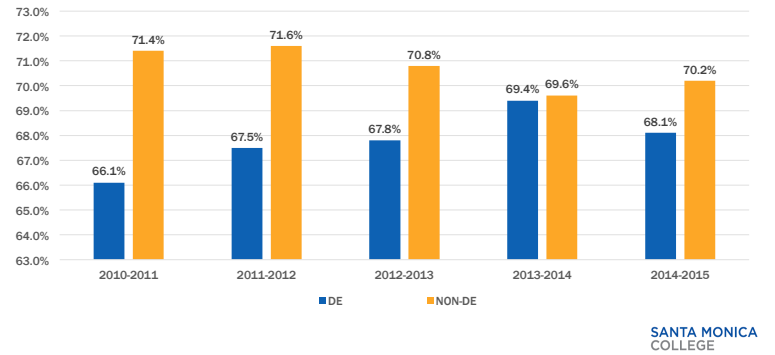


DISTANCE LEARNING COURSE SUCCESS GAP

Difference between course success rate (C or better) in DE and non-DE sections (includes only courses that offer sections for both DE and non-DE)

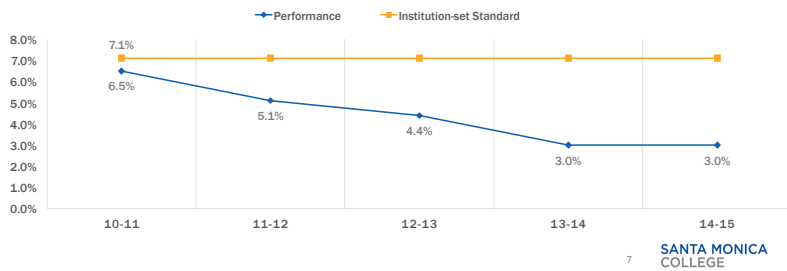


COURSE SUCCESS – DE VS. NON-DE

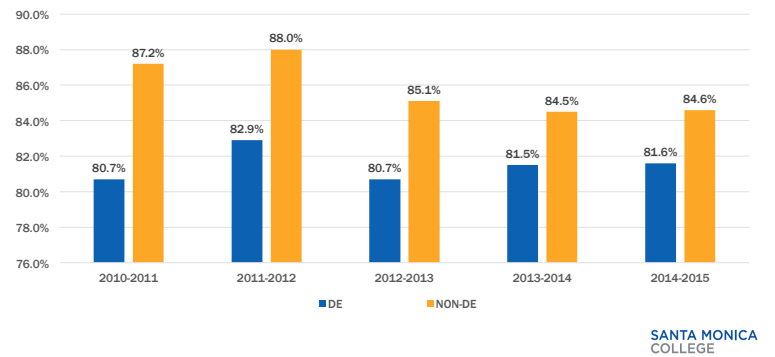


DISTANCE LEARNING COURSE RETENTION GAP

Difference between course retention rate (non-W grades) in DE and non-DE sections (includes only courses that offer sections for both DE and non-DE)



COURSE RETENTION – DE VS. NON-DE



INSTITUTION-SET STANDARDS

- Standards reflecting **satisfactory performance** of student learning and achievement.
- SMC interprets standards as the **minimum level of performance** signaling that the college is meeting educational quality and institutional effectiveness.

Appropriate?

Rigorous?

Realistic?

SANTA MONICA
COLLEGE

INSTITUTION-SET STANDARDS CALCULATION

COURSE SUCCESS	2008-2009	2009-2010	2010-2011	2011-2012
	7.4%	5.2%	5.3%	4.1%

$$\text{Average} = 5.5\% \times 105\% = 5.8\%$$

COURSE RETENTION	2008-2009	2009-2010	2010-2011	2011-2012
	9.1%	6.5%	6.5%	5.1%

$$\text{Average} = 6.8\% \times 105\% = 7.1\%$$

SANTA MONICA
COLLEGE