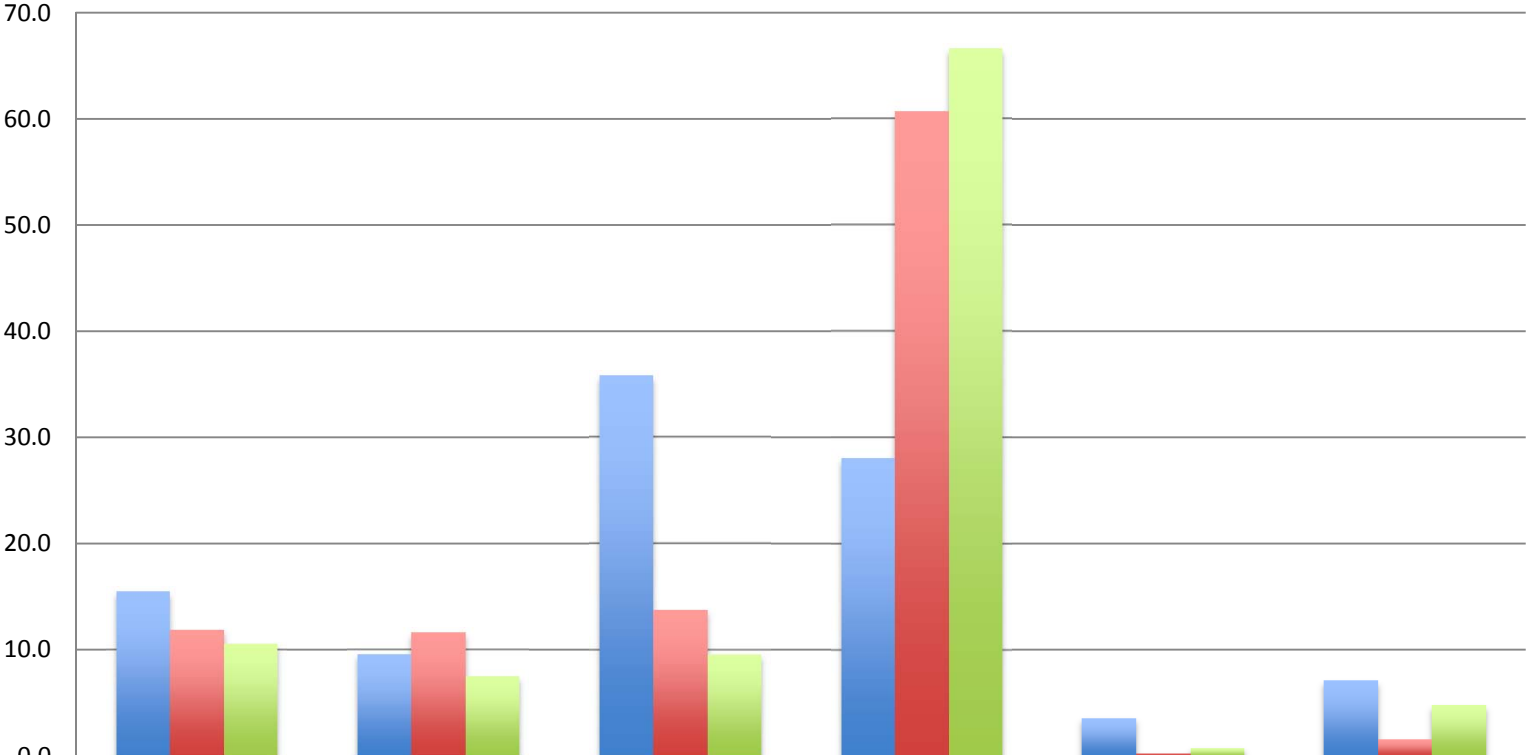


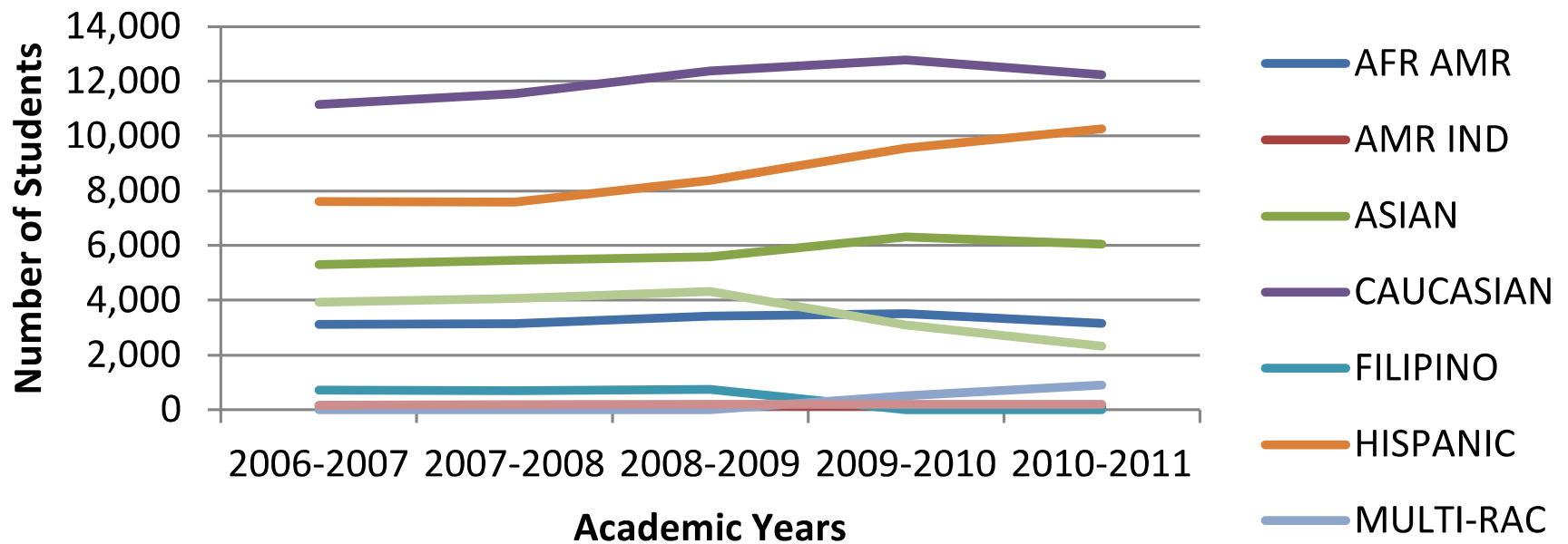
SMC Student/Faculty Diversity 2012-13

Percent SMC Population 2012

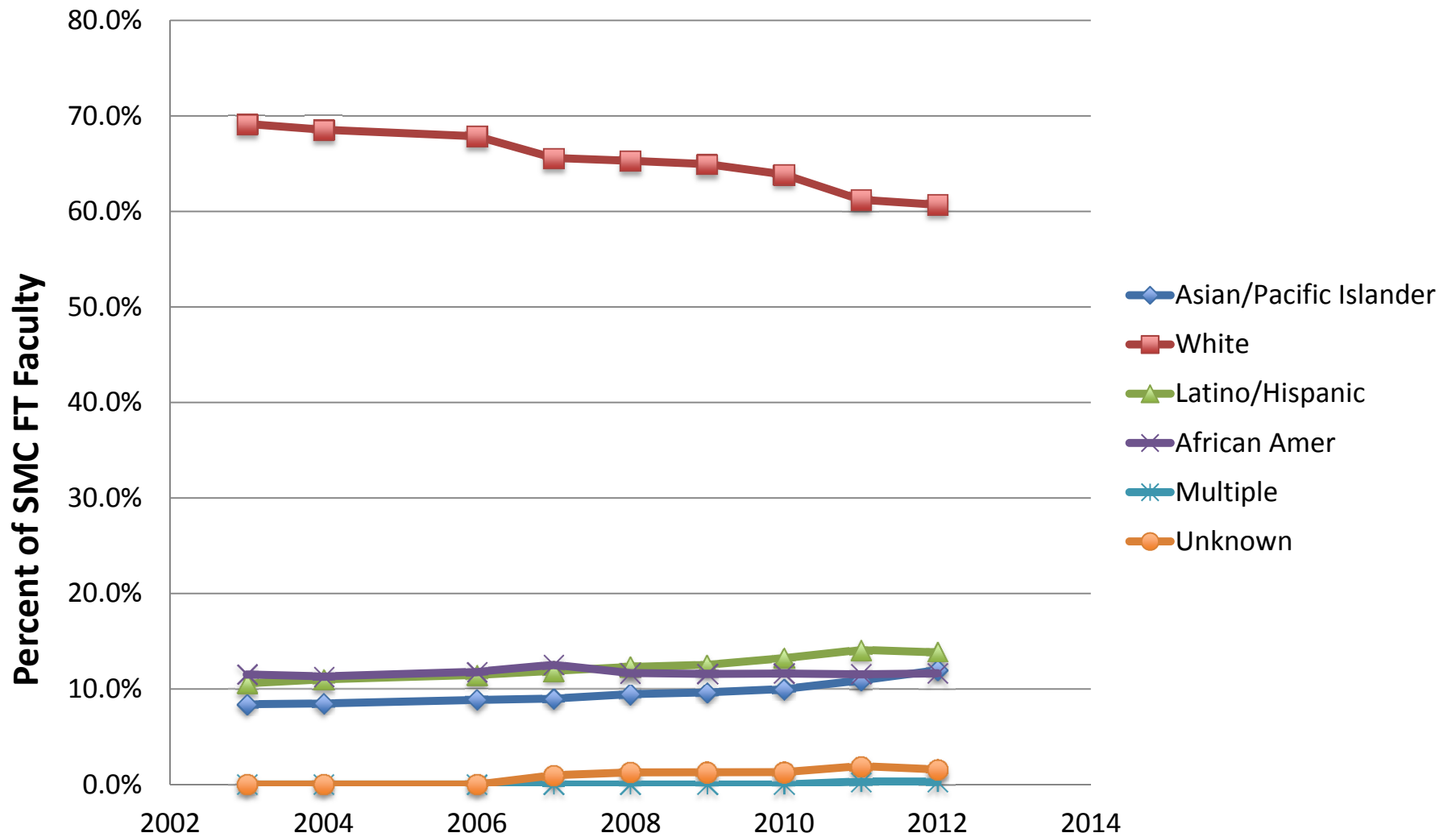


	Asian/Pacific Islander	Black	Hispanic	White	Multiple	Unreported
Students	15.5	9.6	35.8	28.1	3.6	7.1
Faculty (Full Time)	11.9	11.6	13.8	60.7	0.3	1.6
Faculty Part Time	10.6	7.5	9.6	66.6	0.8	4.8

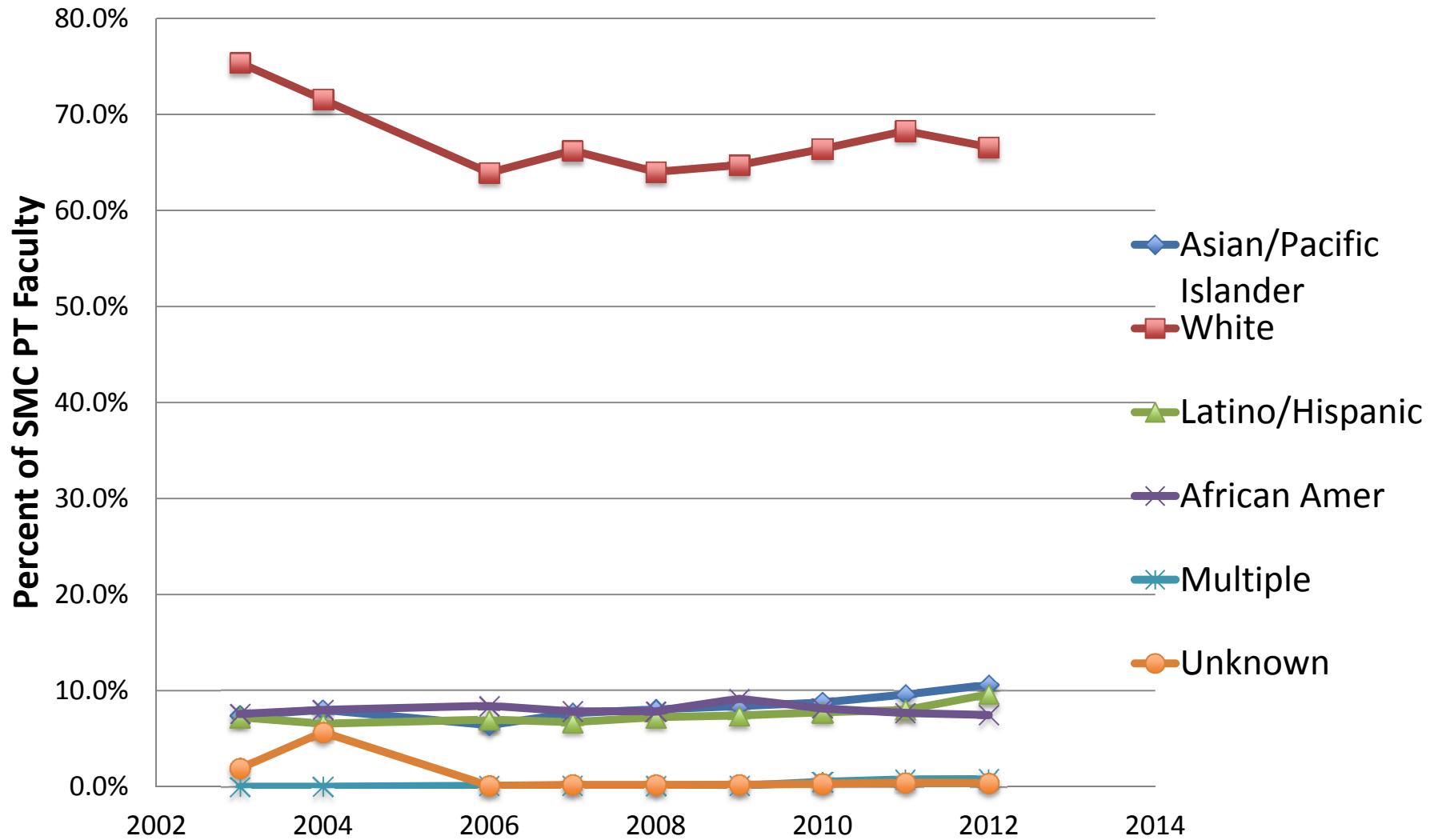
Student Diversity 2006-2011 - Ethnicity



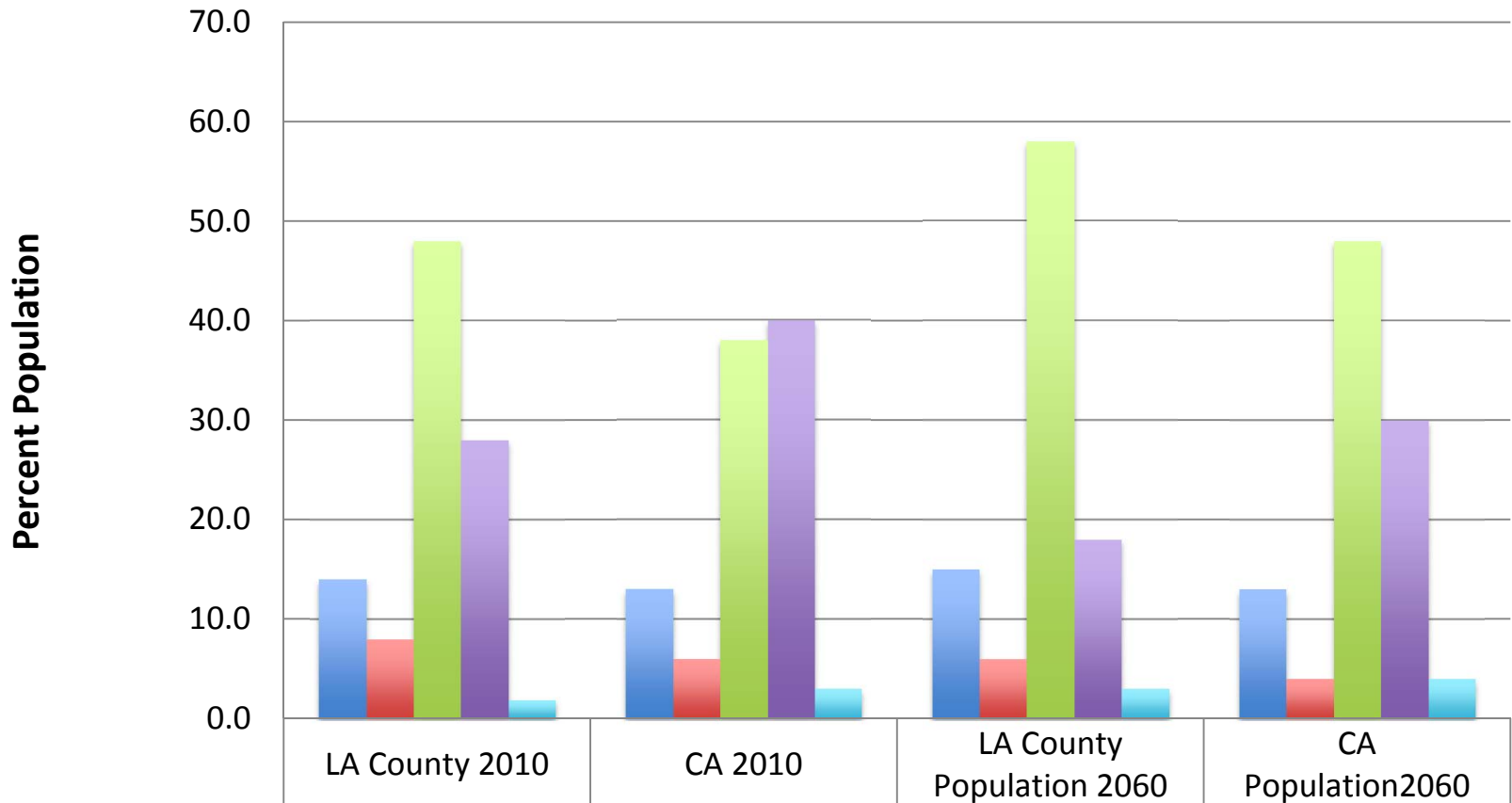
Full Time Faculty Diversity Trends (10 years)



Part-Time Faculty Divesrity Trends (10 Years)

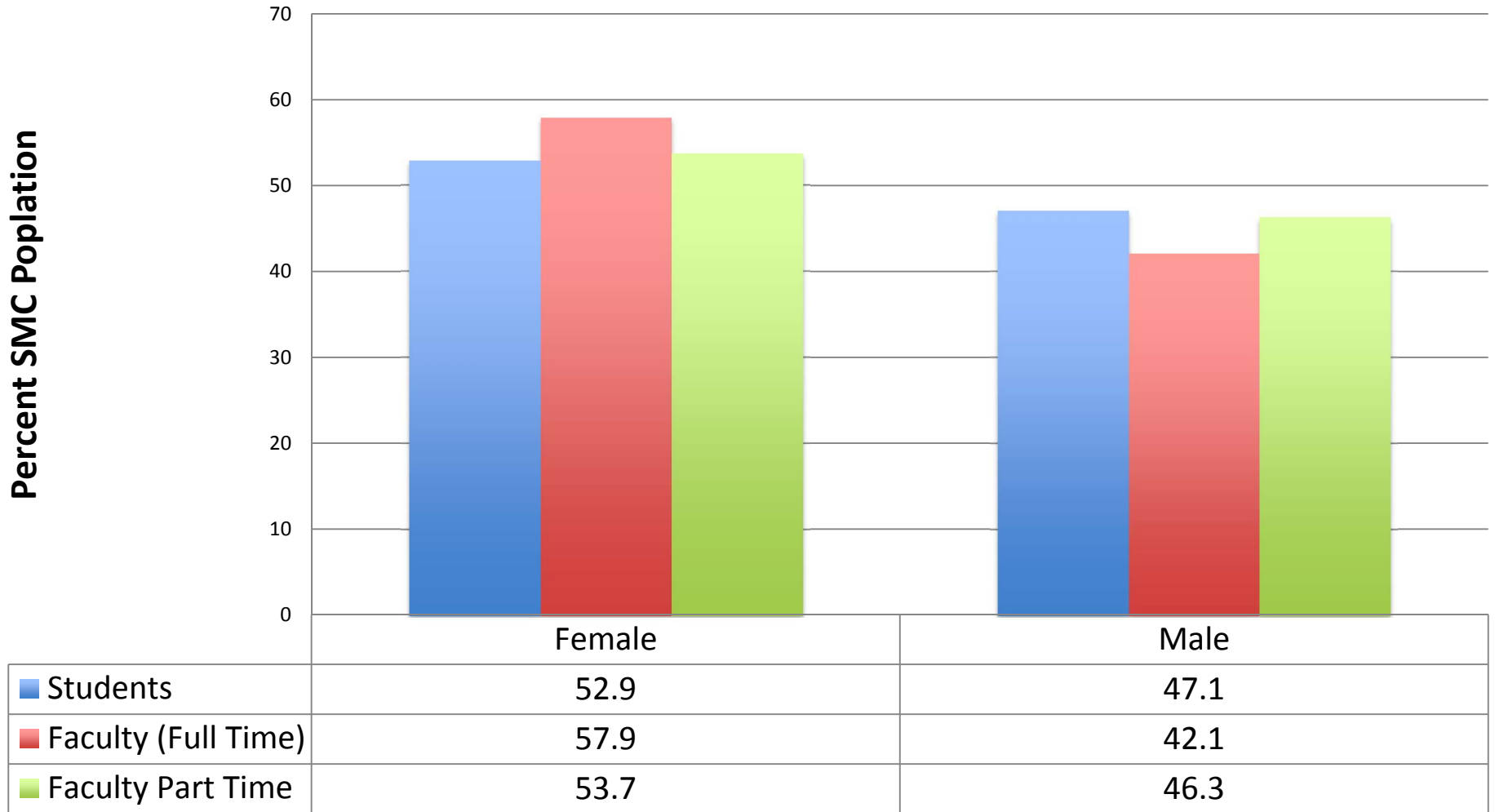


LA County and California: 2010 Census Data and 2060 Projections

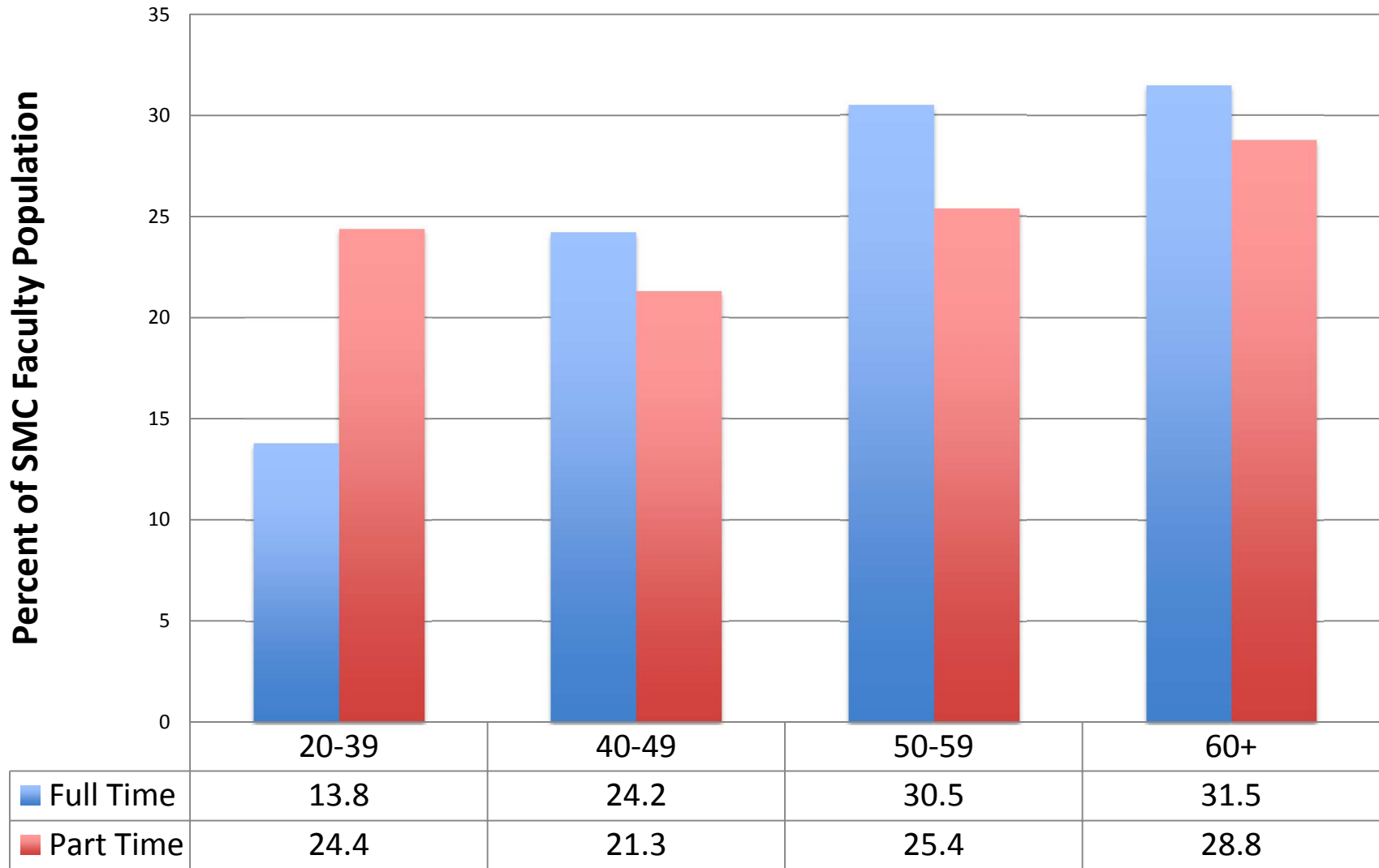


■ Asian/Pacific Islander	14.0	13	15.0	13
■ Black	8.0	6	6.0	4
■ Hispanic	48.0	38	58.0	48
■ White	28.0	40	18.0	30
■ Multiple	1.9	3	3.0	4

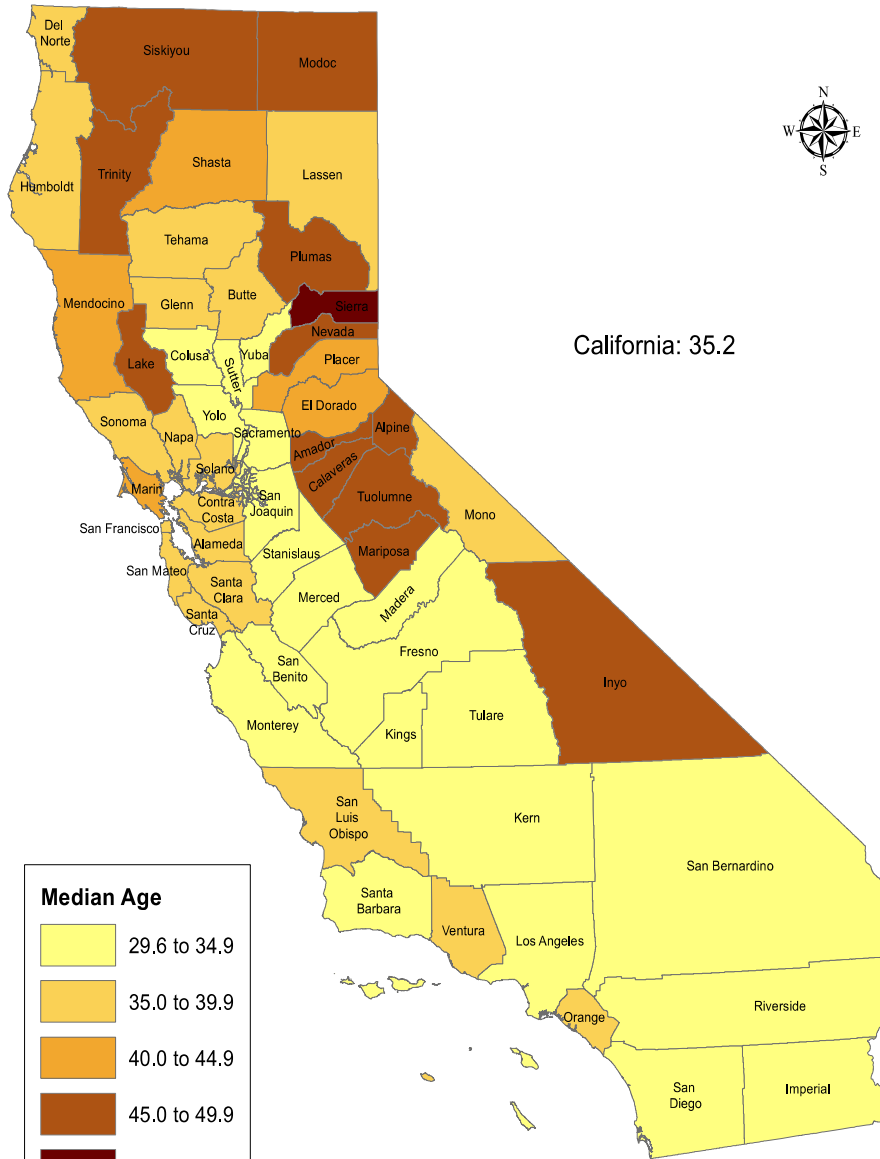
2012-13 SMC Gender Profiles



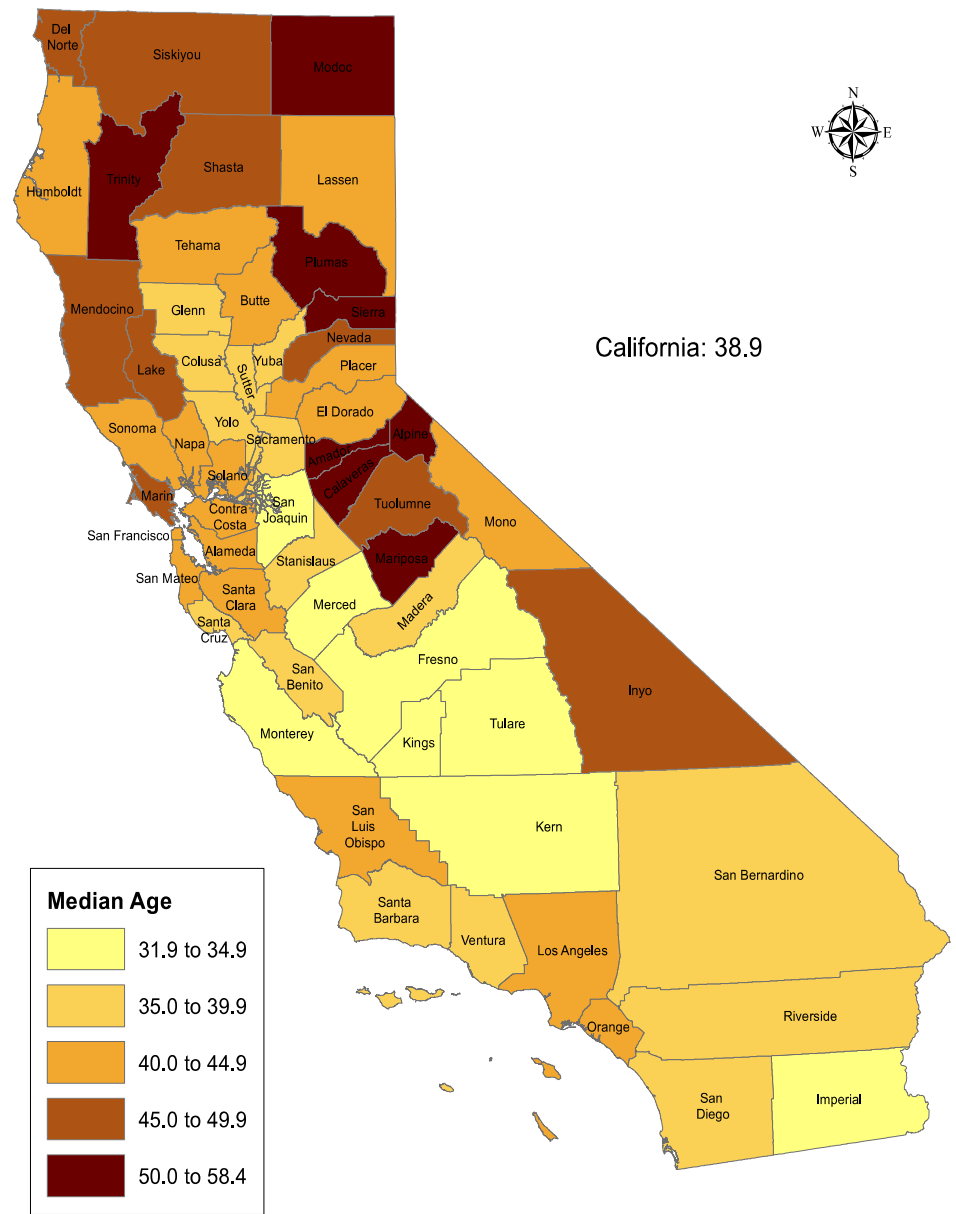
2012-13 SMC Faculty Age Distribution



California 2010 Median Age



California Projected 2030 Median Age



0 20 40 80 120 160