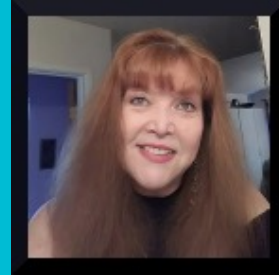




PERKINS V CORE INDICATORS



November 30, 2021
SANTA MONICA COLLEGE

1

1. Goals of this Workshop

2

2



GOALS OF THE WORKSHOP

Goal of the workshop is to give attendees a basic understanding of Perkins Core indicators:

- Overview of Federal & State Negotiating of Core Indicators
- Why College Program Receiving Title I-C Funding Must Review & Improve Core Indicators
- Resources Provided for Understanding of Perkins and Core Indicators
- Overall understanding of the analyzing the core indicator system and using for course and program improvement

3

3

2.

Accountability

4

4

PERKINS IV & V ACCOUNTABILITY

Pursuant to Section 123(b) of the Act, state agencies are required to:

- Negotiate yearly core indicator targets with Districts receiving Title I-C allocations;
- Yearly evaluation of established performance targets;
- For those failing to meet performance targets follow-up on program improvement plans; and
- Consider technical assistance or sanctions for those Districts not meeting performance target for 3 consecutive years

5

5



Core Indicators PERKINS V

- (B) Core indicators of performance for CTE concentrators at the postsecondary level.—Each eligible agency shall identify in the State plan core indicators of performance for CTE concentrators at the postsecondary level that are valid and reliable, and that include, at a minimum, measures of each of the following:
- (i) The percentage of CTE concentrators who, during the second quarter after program completion, remain enrolled in postsecondary education, are in advanced training, military service, or a service program that receives assistance under title I of the National and Community Service Act of 1990 (42 U.S.C. 12511 et seq.), are volunteers as described in section 5(a) of the Peace Corps Act (22 U.S.C. 2504(a)), or are placed or retained in employment.
 - (ii) The percentage of CTE concentrators who receive a recognized postsecondary credential during participation in or within 1 year of program completion.
 - (iii) The percentage of CTE concentrators in career and technical education programs and programs of study that lead to non-traditional fields.

6

6

2020-21 Negotiated Rates

Core Indicator	2020-21 FAUPL Target	2021-22 State Target	SPLT	Actual Performance Outcome	Accept SPLT	2021-22 FAUPL Target
1P1. Placement & Retention	N/A	74.53%	74.53%	N/A	Yes	74.53%
2P1. Recognized Postsecondary Credentials	N/A	81.32%	81.32%	N/A	Yes	81.32%
3P1. Equity: Non-traditional Participation	N/A	23.43%	23.43%	N/A	Yes	23.43%

✓ Check here to indicate you have completed this form.

7

7

Actual Performance (CTE-7): District Performance Determination

District Performance Determination

Core Indicator	State Target	Agreed Target	90% of Agreed Upon Target	Actual Performance	Met 90% of Target
1P1. Placement & Retention	74.53%	74.53%	67.08%	N/A	N/A
2P1. Recognized Postsecondary Credentials	81.32%	81.32%	73.19%	N/A	N/A
3P1. Equity: Non-traditional Participation	23.43%	23.43%	21.09%	N/A	N/A

✓ Check here to indicate you have completed this form

8

8

3.

Perkins Accountability Definitions

9

9

SAM Codes

Every course offered by a college/district is assigned a TOP code by the college/district based on the content of the course and a corresponding State Accountability Model (SAM Priority Code A, B, C, or D)

What are SAM Codes?

Why were they designed?

What purpose do they serve?

- MIS Data Element Dictionary (data element name - course SAM priority codes)

A. Apprenticeship

B. Advanced Occupational (not limited to apprentices)

C. Clearly Occupational (but not advanced)

D. Possibly Occupational

E. Non-Occupational

10

10

TOP Codes

Every course offered by a college/district is assigned a TOP code based on the content of the course.

What are Top Codes?

Why were they designed?

What purpose do they serve?

11

11

Core Indicator Definitions

- Concentrator
- Life Long Learner
- Persisters
- Completer
- Leaver
- Transfer Prepared

12

12



CORE INDICATOR – SPECIAL POPULATIONS

Core Indicator Negotiations and what happens if negotiated levels do not meet the 90% mark remain the same as Perkins IV.

Perkin Special Populations have had two name changes and three new populations:

- Individuals w Disabilities
- Economically Disadvantaged
- Non-traditional Fields
- Single Parents (Including single pregnant woman)
- Out of Workforce Individuals (Used to be Called Displaced Homemaker)
- English Learners (Used to be Called Limited English Proficient)
- Homeless Individuals (New)
- Youths who have aged out of the foster care system (New)
- Youth w parents in the armed forces and on active duty (New)

13

13

4.

Analyzing Core Indicator Data

14

14

Analyzing Core Indicator Data

- ▶ If granted Perkins IV funding within a 2-6 digit TOP Code analyzing core indicator data is a requirement.
- ▶ If core indicator data is beneath the College negotiated rate the program will describe the issues and indicate how those issues will be addressed.
- ▶ If there are few to no concentrators within the data then size, scope and quality must be addressed.
- ▶ If the limited English proficient population is large at the college but few to no concentrators make it into the cohort, this must be reviewed.

15

15

Reasons for Odd Data or No Data

- ▶ The Program is New
- ▶ The Program is Offered in Non-Credit Only
- ▶ The program is small and SAM C courses are not offered every year
- ▶ The program recently had a TOP Code change
- ▶ The courses and/or the certificate were miscoded
- ▶ Miscoded programs were corrected, but we are still waiting for reports to be updated, or
- ▶ The program is interdisciplinary [core courses are outside the TOP code of the program or will only have completers (certificates and degrees)].

16

16

What to Look for in Core Indicators

- ▶ Duplicative & Non-Duplicative Headcount Ratio
- ▶ Non Duplicative Count and Concentrator
- ▶ What is the non-traditional gender?
- ▶ Concentrator/Non-Traditional Ratio
- ▶ Concentrator 3 Non-Traditional Participant Breakdown
- ▶ Size, Scope, Quality
- ▶ Limited English Proficient Ratio to College Demographics
- ▶ How are Students Doing in the 3 Core Indicators

California Community Colleges Chancellor's Office
 Management Information Systems Division
 Career Technical Education (CTE) (Perkins V)

Negotiation Reports | Core Indicator Reports | Documentation | Contact Us

Forms
 Various reports (Section I Part E & F) showing District/College Aggregate Core Indicator Information.

- o Form 1 Part E-C - College
- o Form 1 Part E-D - District
- o Form 1 Part E-D - FedSpreadSheet
- o Form 1 Part F by 2 Digit TOP Code - College
- o Form 1 Part F by 4 Digit TOP Code - College
- o Form 1 Part F by 6 Digit TOP Code - College

Special Population Core Indicators
 Various reports showing Core Indicator information for Special Population by College/District and TOP code.

- o Special Population Core Indicators by TOP Code - College
- o Special Population Core Indicators by TOP Code - District

Trend Reports by Core Indicator
 Various reports showing Performance Trend by College.

- o Core 1 - Postsecondary Retention & Placement
- o Core 2 - Earned Postsecondary Credential
- o Core 3 - Non-traditional Program Enrollment
- o Core 4 - Employment

Summary Core Indicators by TOP Code
 Various summary reports showing Core Indicator or Performance information by College/District and TOP Code.

- o Core Indicators by TOP Code - Summary by College
- o Core Indicators by TOP Code - Summary by District
- o Core Indicators by TOP Code - Summary by State
- o Summary Performance Detail Report by College - 2 Digit TOP
- o Summary Performance Detail Report by College - 4 Digit TOP
- o Summary Performance Detail Report by College - 6 Digit TOP

https://misweb.cccco.edu/perkinsV/Core_Indicator_Reports/

California Community Colleges Chancellor's Office
Management Information Systems Division
Career Technical Education (CTE) (Perkins V)

Negotiation Reports | Core Indicator Reports | Documentation | Contact Us

You are here : Core Indicator Reports/Summary Core Indicators by TOP Code

Summary Core Indicators by TOP Code - Parameter Selection Area

Select Report Type: District Summary - Core
Select District/College: Santa Monica District
Select Fiscal Year: 2021-2022
Select TOP Code: [Empty]
View Report

19

19

California Community Colleges Chancellor's Office
Management Information Systems Division
Career Technical Education (CTE) (Perkins V)

Negotiation Reports | Core Indicator Reports | Documentation | Contact Us

You are here : Core Indicator Reports/Summary Core Indicators by TOP Code

Summary Core Indicators by TOP Code - Parameter Selection Area

Select Report Type: 6 Digit TOP Codes - Sui
Select District/College: Santa Monica City Colle
Select Fiscal Year: 2021-2022
Select TOP Code: 050600 Business Man
View Report

20

20

TOP CODE	INSTRUCTIONAL PROGRAM TITLE	NONTRADITIONAL GENDER			
01 AGRICULTURE AND NATURAL RESOURCES			06 MEDIA AND COMMUNICATIONS		
010100	Agriculture Technology & Sciences, General	F	060400	Radio and Television	F
010200	Animal Science	F	060410	Radio	F
010210	Veterinary Technician (Licensed)	M	060420	Television (including combined tv/film/video)	F
010220	Artificial Inseminator (Licensed)	F	060430	Broadcast Journalism	F
010230	Dairy Science	F	061220	Film Production	F
010240	Equine Science	F	061400	Digital Media	M
010300	Plant Science	F	061450	Desktop Publishing	M
010310	Agricultural Pest Control Advisor & Operator (Licensed)	F	07 INFORMATION TECHNOLOGY		
010400	Viticulture, Enology, and Wine Business	F	070100	Information Technology, General	F
010900	Horticulture	F	070200	Computer Information Systems	F
010910	Landscape Design and Maintenance	F	070210	Software Applications	M
010930	Nursery Technology	F	070700	Computer Software Development	F
010940	Turfgrass Technology	F	070710	Computer Programming	F
011200	Agriculture Business, Sales, and Service	F	070730	Computer Systems Analysis	F
011300	Food Processing & Related Technologies	F	070800	Computer Infrastructure and Support	F
011400	Forestry	F	070810	Computer Networking	F
011500	Natural Resources	F	070820	Computer Support	F
011520	Wildlife & Fisheries	F	079900	Other Information Technology	F
011600	Agricultural Power Equipment Technology	F	08 EDUCATION		
019900	Other Agriculture and Natural Resources	F	080200	Educational Aide (Teacher Assistant)	M
02 ARCHITECTURE AND ENVIRONMENTAL DESIGN:			080210	Educational Aide (Teacher Assistant), Bilingual	M
020100	Architecture and Architectural Technology	F	080900	Special Education	M
029900	Other Architecture and Environmental Design	F	09 ENGINEERING & INDUSTRIAL TECHNOLOGIES		
03 ENVIRONMENTAL SCIENCES AND TECHNOLOGIES:			093400	Electronics and Electric Technology	F
030300	Environmental Technology	F	093410	Computer Electronics	F
04 BIOLOGICAL SCIENCES:			093420	Industrial Electronics	F
043000	Biotechnology and Biomedical Technology	F	093430	Telecommunications Technology	F
05 BUSINESS AND MANAGEMENT			093440	Electrical Systems and Power Transmission	F
050100	Business and Commerce, General	F	093460	Biomedical Instrumentation	F
050200	Accounting	M	093480	Laser and Optical Technology	F
050400	Banking and Finance	M	093500	Electro-Mechanical Technology	F
050500	Business Administration	F	093510	Appliance Repair	F
050600	Business Management	F	094300	Instrumentation Technology	F
050650	Retail Store Operations and Management	M	094330	Vacuum Technology	F
050800	International Business and Trade	F	094500	Industrial Systems Technology and Maintenance	F
050940	Sales and Salesmanship	M	094600	Environmental Control Technology (HVAC)	F
051000	Logistics and Materials/Transportation	F	094610	Energy Systems Technology	F
051400	Office Technology/Office Computer Applications	M	094700	Diesel Technology	F
051410	Legal Office Technology	M	094720	Heavy Equipment Maintenance	F
051420	Medical Office Technology	M	094730	Heavy Equipment Operation	F
051430	Court Reporting	M	094740	Railroad and Light Rail Operations	F
051800	Customer Service	M	094750	Truck and Bus Driving	F
			094800	Automotive Technology	F



California Community Colleges
**Programs Classified
as Nontraditional**
Taxonomy of Programs (TOP) Ver. 6

21

09 ENGINEERING & INDUSTRIAL TECHNOLOGIES (cont.)		10 FINE AND APPLIED ARTS		14 LAW	
094830	Motorcycle, Outboard, and Small Engine Repair	F	100500	Commercial Music	F
094840	Alternative Fuels & Advanced Transportation Technology	F	101200	Applied Photography	F
094850	Recreational Vehicle Service	F	103000	Graphic Art and Design	F
094900	Automotive Collision Repair	F	12 HEALTH		
094910	Upholstery Repair - Automotive	F	120500	Medical Laboratory Technology	M
095000	Aeronautical and Aviation Technology	F	120800	Medical Assisting	M
095010	Aviation Airframe Mechanics	F	120810	Clinical Medical Assisting	M
095020	Aviation Power Plant Mechanics	F	120820	Administrative Medical Assisting	M
095040	Aircraft Electronics (Avionics)	F	120830	Health Facility Unit Coordinator	M
095050	Aircraft Fabrication	F	121100	Polysomnography	M
095200	Construction Crafts Technology	F	121400	Orthopedic Assistant	M
095210	Carpentry	F	121700	Surgical Technician	M
095220	Electrical	F	121800	Occupational Therapy Technology	M
095230	Plumbing, Pipefitting, and Steam Fitting	F	121900	Optical Technician	M
095240	Glazing	F	122000	Speech-Language Pathology and Audiology	M
095250	Mill and Cabinet Work	F	122100	Pharmacy Technology	M
095260	Masonry, Tile, Cement, and Lath and Plaster	F	122200	Physical Therapist Assistant	M
095270	Painting, Decorating, and Flooring	F	122300	Health Information Technology	M
095280	Drywall and Insulation	F	122310	Health Information Coding	M
095290	Roofing	F	122600	Radiation Therapy Technician	M
095300	Drafting Technology	F	123000	Nursing	M
095310	Architectural Drafting	F	123010	Registered Nursing	M
095320	Civil Drafting	F	123020	Licensed Vocational Nursing	M
095330	Electrical, Electronic, & Electro-Mechanical Drafting	F	123030	Certified Nurse Assistant	M
095340	Mechanical Drafting	F	123080	Home Health Aide	M
095400	Chemical Technology	F	123900	Psychiatric Technician	M
095420	Plastics and Composites	F	124010	Dental Assistant	M
095430	Petroleum Technology	F	124020	Dental Hygienist	M
095500	Laboratory Science Technology	F	125500	Mortuary Science	F
095600	Manufacturing and Industrial Technology	F	126200	Massage Therapy	M
095630	Machining and Machine Tools	F	13 FAMILY AND CONSUMER SCIENCES		
095640	Sheet Metal and Structural Metal	F	130500	Child Development/Early Care and Education	M
095650	Welding Technology	F	130540	Preschool Age Children	M
095700	Civil and Construction Management Technology	F	130550	The School Age Child	M
095720	Construction Inspection	F	130580	Child Development Administration & Management	M
095730	Surveying	F	130590	Infants and Toddlers	M
095800	Water and Wastewater Technology	F	130600	Nutrition, Foods, and Culinary Arts	M
095900	Marine Technology	F	130620	Dietetic Services and Management	M
096100	Optics	F	130630	Culinary Arts	F
096200	Musical Instrument Repair	F	130660	Dietetic Technology	M
099900	Other Engineering & Related Industrial Technologies	F			
				16 LIBRARY SCIENCE	
				140200	Paralegal
				160200	Library Technician (Aide)
				19 PHYSICAL SCIENCES	
				193000	Earth Science
				21 PUBLIC AND PROTECTIVE SERVICES	
				210200	Public Administration
				210210	Public Works
				210450	Disability Services
				210500	Administration of Justice
				210510	Corrections
				210530	Industrial and Transportation Security
				210550	Police Academy
				213300	Fire Technology
				213310	Wildland Fire Technology
				213350	Fire Academy
				219900	Other Public and Protective Services
				30 COMMERCIAL SERVICES	
				300700	Cosmetology and Barbering
				300900	Travel Services and Tourism
				302000	Aviation & Airport Management & Services
				302010	Aviation & Airport Management
				302020	Piloting
				302030	Air Traffic Control
				309900	Other Commercial Services

Prepared by the Special Populations Collaborative Project
(with funding from Carl D. Perkins Career and Technical
Education Act of 2006 grants 07-165-001 and 08-165-001,
awarded by the California Community Colleges Chancellor's
Office to West Hills Community College District), 2008



22

22

Resources

- ▶ Perkins IV Core Indicator Cohort Definitions and Methodology
[Methodology for Perkins IV](#) (Revised 1/11/12)
- ▶ Data Element Dictionary
[SAM Codes](#)
- ▶ Taxonomy of Programs (TOPs)
[TOPs Codes](#)

23

23



QUESTIONS

Contact Information:

BUSINESS PHONE 1(916)613-7124

BUSINESS E-MAIL

robin.harrington@comcast.net

24

24