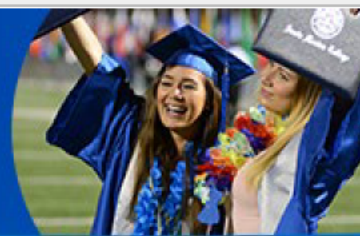




ADMISSIONS & RECORDS



Feb 16, 2022

██████████

Your SMC ID: ██████████

Your admission terms begin:

Fall 2022 session begins August 29, 2022

Dear ██████████:

Congratulations again on your admission to SMC! Below you'll find Your SMC Admission Tasks. Complete any applicable ones ASAP to facilitate your enrollment process.

Before you can enroll or use your Corsair Connect portal, you must setup your SMC account. Your username and password will be emailed shortly.

Best wishes,

Admissions & Records

Step 1: Admission Issues

- Stay connected with [SMC GO](#), the official SMC app. Download on [Google Play](#) or the [App Store](#).
- There are no outstanding admission issues.



Step 2: Apply for Financial Aid

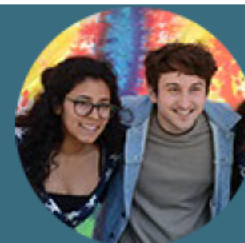
- Apply today for federal and state financial aid at www.smc.edu/financialaid.

Step 3: Complete New Student Orientation

- Orientation is required of you and all first-time college

students. It must be completed prior to enrolling in classes.

- The [Online Orientation](#) may be accessed anytime.
- The orientation provides you with the necessary information to make a smooth transition to SMC.



Step 4: Review Your Placement

- Login to [Corsair Connect](#) and click the "Placement" tab to find your English and math placement. If a placement is not available, just follow the instructions to complete the placement process.
- Completing the placement process is required to enroll in more than 6 units your first semester, or if a class you will take has an enforced English, ESL, or math prerequisite.
- If you completed relevant coursework or Advanced Placement tests with a score of 3, 4, or 5, you may request a [placement/prerequisite waiver](#).
- Visit the [Success and Engagement Center](#) website to learn more.

Step 5: Develop an Ed Plan/See a Counselor

- You are required to create a two-semester/session education plan (minimum) with [MyEdPlan](#) before enrolling in any courses.
- Before creating an education plan, you must have an English and math placement in your record and have completed the Online Orientation (or plan to enroll in up to 6 units only on your first semester).
- You may submit your education plan online for review by a counselor through MyEdPlan or meet with a SMC counselor in-person.
- If you are a member of a [Special Program](#), there may be



additional requirements.



Step 6: Enroll in Classes

- You may enroll in classes through your student portal, **Corsair Connect**, on or after your designated enrollment appointment time.
- Enrollment appointments are released in early April for Summer/Fall terms and in early November for Winter/Spring terms.
- **Enrollment priority** is determined by many factors, but completing placement, orientation, and your education plan will boost your enrollment date.

Admissions & Records Office

www.smc.edu/admissions

admissions@smc.edu or 310-434-4380