

# MATHEMATICS COURSE SEQUENCE

Course sequences shown here are for general reference. Your starting point depends on your math assessment results and your education plan. Before you enroll in a math class, see the SMC Success and Engagement Center website ([smc.edu/successcenter](http://smc.edu/successcenter)), visit the Math Department ([smc.edu/math](http://smc.edu/math)), see [assist.org](http://assist.org), or talk to a counselor in the Counseling Department.

Higher Level

College Level

Pre-College Level

Course Descriptions

These courses may be taken in any order, but students are advised to complete MATH 11 and MATH 15 before enrolling in MATH 13.

**YOUR TRANSFER SCHOOL'S REQUIREMENTS MAY VARY**

For details, see [assist.org](http://assist.org) or talk to a counselor in the Counseling Department.

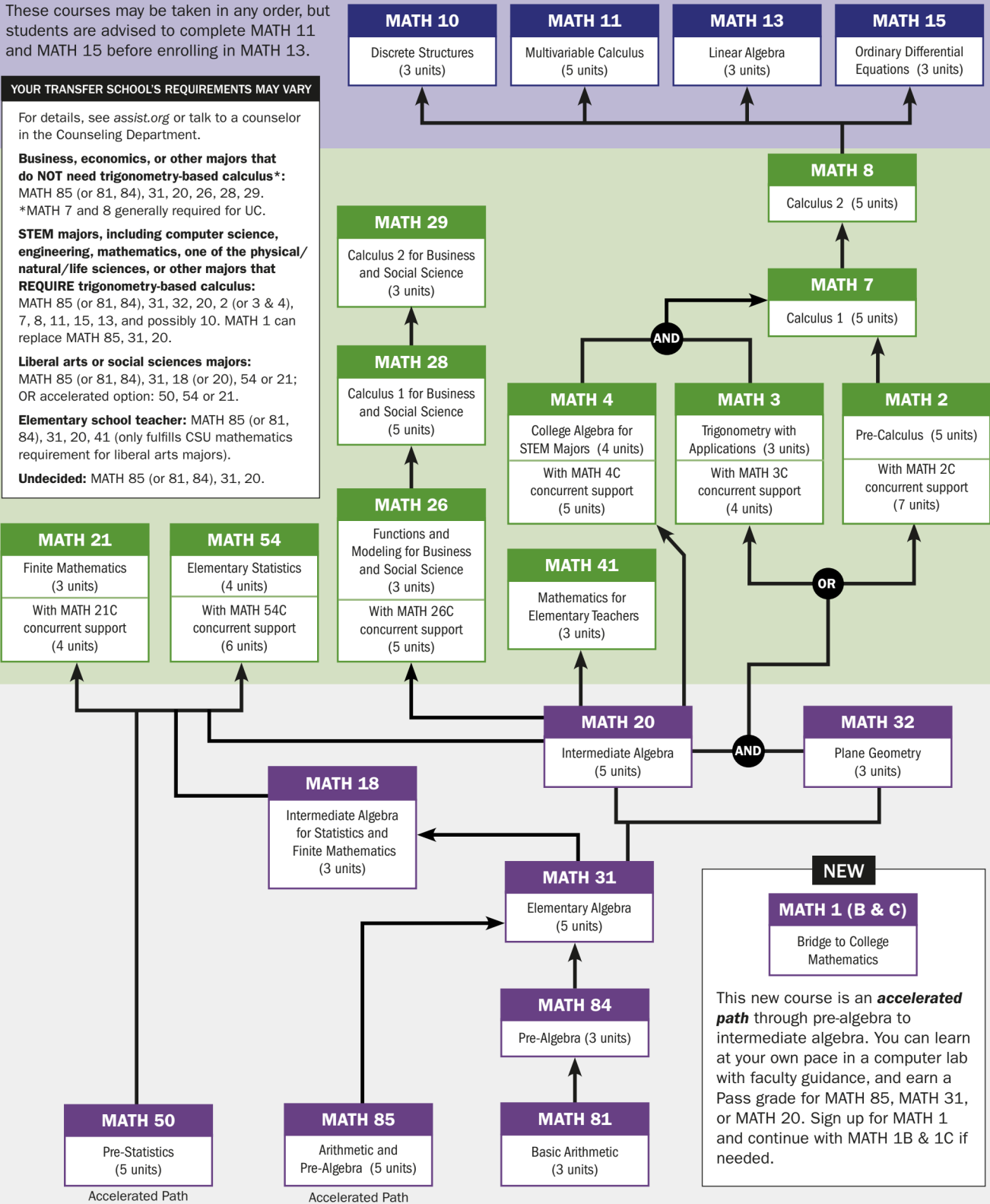
**Business, economics, or other majors that do NOT need trigonometry-based calculus\*:**  
MATH 85 (or 81, 84), 31, 20, 26, 28, 29.  
\*MATH 7 and 8 generally required for UC.

**STEM majors, including computer science, engineering, mathematics, one of the physical/natural/life sciences, or other majors that REQUIRE trigonometry-based calculus:**  
MATH 85 (or 81, 84), 31, 32, 20, 2 (or 3 & 4), 7, 8, 11, 15, 13, and possibly 10. MATH 1 can replace MATH 85, 31, 20.

**Liberal arts or social sciences majors:**  
MATH 85 (or 81, 84), 31, 18 (or 20), 54 or 21;  
OR accelerated option: 50, 54 or 21.

**Elementary school teacher:** MATH 85 (or 81, 84), 31, 20, 41 (only fulfills CSU mathematics requirement for liberal arts majors).

**Undecided:** MATH 85 (or 81, 84), 31, 20.



**NEW**

**MATH 1 (B & C)**  
Bridge to College Mathematics

This new course is an **accelerated path** through pre-algebra to intermediate algebra. You can learn at your own pace in a computer lab with faculty guidance, and earn a Pass grade for MATH 85, MATH 31, or MATH 20. Sign up for MATH 1 and continue with MATH 1B & 1C if needed.